

NUMBER OF COPIES RECEIVED	
DISTRIBUTION	
SANTA FE	1
FILE	2
U.S.G.S.	
LAND OFFICE	
TRANSPORTER	OIL
	GAS
PRODUCTION OFFICE	
OPERATOR	

NEW MEXICO OIL CONSERVATION COMMISSION
Santa Fe, New Mexico

Form C-101
Revised (12/1/55)

NOTICE OF INTENTION TO DRILL

Notice must be given to the District Office of the Oil Conservation Commission and approval obtained before drilling or recompletion begins. If changes in the proposed plan are considered advisable, a copy of this notice showing such changes will be returned to the sender. Submit this notice in QUINTUPPLICATE. One copy will be returned following approval. See additional instructions in Rules and Regulations of the Commission. If State Land submit 6 Copies Attach Form C-128 in triplicate to first 3 copies of form C-101

Midland, Texas

April 5, 1966

(Place)

(Date)

OIL CONSERVATION COMMISSION
SANTA FE, NEW MEXICO

Gentlemen:

You are hereby notified that it is our intention to commence the Drilling of a well to be known as

TIDEWATER OIL COMPANY

(Company or Operator)

Santa Fe "A"

, Well No. **1**, in "H" (Unit) The well is

located **1980** feet from the **North** line and **660** feet from the **East**

(GIVE LOCATION FROM SECTION LINE) Line of Section **13**, T. **17-N**, R. **9-W**, NMPM. **Undesignated** **McKinley** County

If State Land the Oil and Gas Lease is No. **-**

If patented land the owner is **Santa Fe- Pacific RR Co.**

Address **4549 Produce Plaza, Los Angeles, California**

We propose to drill well with drilling equipment as follows: **Rotary**

The status of plugging bond is **Blanket Bond dated November 30, 1937 With Saint Paul Indemnity**

Drilling Contractor **Contract Not Let**

We intend to complete this well in the **Dakota** formation at an approximate depth of **2700** feet.

CASING PROGRAM

We propose to use the following strings of Casing and to cement them as indicated:

Size of Hole	Size of Casing	Weight per Foot	New or Second Hand	Depth	Sacks Cement
9-7/8"	7-5/8"	24	New	100'	50 Sx Reg. W/2% CaCl.

If changes in the above plans become advisable we will notify you immediately.

ADDITIONAL INFORMATION (If recompletion give full details of proposed plan of work.)

Will complete only in Hospah Sand at approximately 1800', if productive.

Approved 4-7, 1966
Except as follows:

Sincerely yours,

TIDEWATER OIL COMPANY

(Company or Operator)

By Harold A. Wade

Position **Authorized Employee**

Send Communications regarding well to

Name **C. L. Wade**

Address **Box 249, Hobbs, New Mexico**

OIL CONSERVATION COMMISSION

By Ernest L. Wade

**NEW MEXICO OIL CONSERVATION COMMISSION
WELL LOCATION AND ACREAGE DEDICATION PLAT**

Form C-102
Supersedes C-128
Effective 1-1-65

All distances must be from the outer boundaries of the Section.

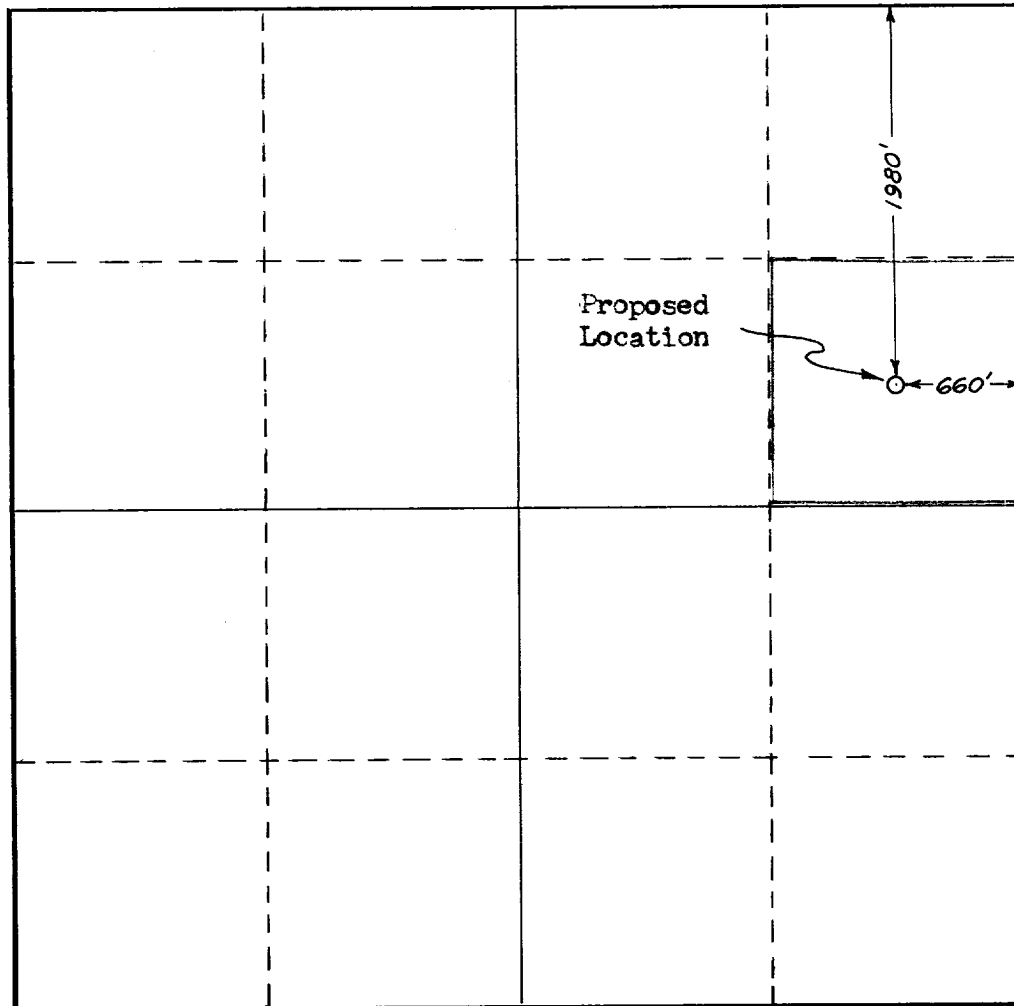
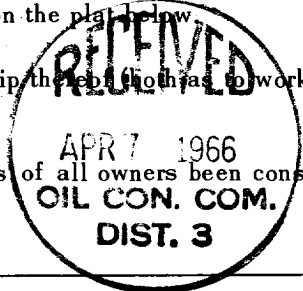
Operator Tidewater Oil Co.			Lease Santa Fe-Pacific R.R. "A"		Well No. 1
Unit Letter	Section 13	Township 17 N	Range 9 W	County Mc Kinley	
Actual Footage Location of Well: 1980 feet from the North line and 660 feet from the East line					
Ground Level Elev: 6968	Producing Formation --		Pool Undesignated		Dedicated Acreage: 40 Acres

1. Outline the acreage dedicated to the subject well by colored pencil or hachure marks on the plat below.
2. If more than one lease is dedicated to the well, outline each and identify the ownership thereof (both as to working interest and royalty).
3. If more than one lease of different ownership is dedicated to the well, have the interests of all owners been consolidated by communitization, unitization, force-pooling, etc?

☐ Yes ☐ No If answer is "yes," type of consolidation _____

If answer is "no," list the owners and tract descriptions which have actually been consolidated. (Use reverse side of this form if necessary.) _____

No allowable will be assigned to the well until all interests have been consolidated (by communitization, unitization, forced-pooling, or otherwise) or until a non-standard unit, eliminating such interests, has been approved by the Commission.



CERTIFICATION

I hereby certify that the information contained herein is true and complete to the best of my knowledge and belief.

Harold G. Vest

Name

Harold G. Vest

Position

Authorized Employee

Company

TIDEWATER OIL COMPANY

Date

APRIL 5, 1966

I hereby certify that the well location shown on this plat was plotted from field notes of actual surveys made by me or under my supervision, and that the same is true and correct to the best of my knowledge and belief.

Date Surveyed

April 1, 1966

Registered Professional Engineer and/or Land Surveyor

Frederick H. Reed

Certificate No.

N. M. # 3795

0 330 660 990 1320 1650 1980 2310 2640 2000 1500 1000 500 0

