

Cards + Label

NO. OF COPIES RECEIVED	5
DISTRIBUTION	
SANTA FE	1
FILE	1
U.S.G.S.	2
LAND OFFICE	
OPERATOR	1

NEW MEXICO OIL CONSERVATION COMMISSION

Form C-101
Revised 1-1-65

5A. Indicate Type of Lease	
STATE <input type="checkbox"/>	FEE <input checked="" type="checkbox"/>
5. State Oil & Gas Lease No.	

APPLICATION FOR PERMIT TO DRILL, DEEPEN, OR PLUG BACK

1a. Type of Work			7. Unit Agreement Name		
b. Type of Well OIL WELL <input checked="" type="checkbox"/> GAS WELL <input type="checkbox"/> OTHER <input type="checkbox"/>			8. Farm or Lease Name Santa Fe RR		
2. Name of Operator Tenneco Oil Company			9. Well No. 1		
3. Address of Operator P. O. Box 1714, Durango, Colorado			10. Field and Pool, or Wildcat Wildcat (Hospah)		
4. Location of Well UNIT LETTER G LOCATED 1980 FEET FROM THE North LINE AND 1980 FEET FROM THE East LINE OF SEC. 15 TWP. 17 N RGE. 9 W NMPM			12. County McKinley		
19. Proposed Depth 1850			19A. Formation Hospah		20. Rotary or C.T. Rotary
21. Elevations (Show whether DF, RT, etc.) 7098' Gr.		21A. Kind & Status Plug. Bond		22. Approx. Date Work will start Sept. 9, 1966	

23.

PROPOSED CASING AND CEMENT PROGRAM

SIZE OF HOLE	SIZE OF CASING	WEIGHT PER FOOT	SETTING DEPTH	SACKS OF CEMENT	EST. TOP
12 1/4"	8 5/8"	20 & 24#	90'	Cement to surface	
7 7/8"	4 1/2"	10.5#	1850'	Cement to surface	

We propose to drill to approximate TD of 1850'. Run DST. Run IES and Density logs. Run casing as shown above. WOC. Complete as a single oil well if productive. Run potential test. Run 2 3/8" tubing, install pumping unit and engine, production equipment and rods.

APPROVAL VALID
FOR 90 DAYS UNLESS
DRILLING COMMENCED,
EXPIRES 11-30-66



IN ABOVE SPACE DESCRIBE PROPOSED PROGRAM; IF PROPOSAL IS TO DEEPEN OR PLUG BACK, GIVE DATA ON PRESENT PRODUCTIVE ZONE AND PROPOSED NEW PRODUCTIVE ZONE. GIVE BLOWOUT PREVENTER PROGRAM, IF ANY.

I hereby certify that the information above is true and complete to the best of my knowledge and belief.

Signed Harold C. Nichols Title Senior Production Clerk Date August 30, 1966

(This space for State Use)

Original Signed by Emery C. Arnold TITLE SUPERVISOR DIST. #3 DATE SEP 1 1966

CONDITIONS OF APPROVAL, IF ANY:

DISTRIBUTION:

5-NMOCC

1-File

**NEW MEXICO OIL CONSERVATION COMMISSION
WELL LOCATION AND ACERAGE DEDICATION PLAT**

All distances must be from the outer boundaries of the Section

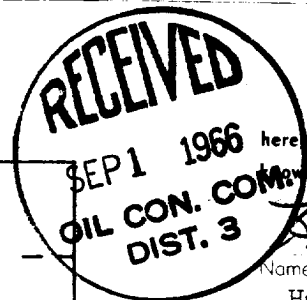
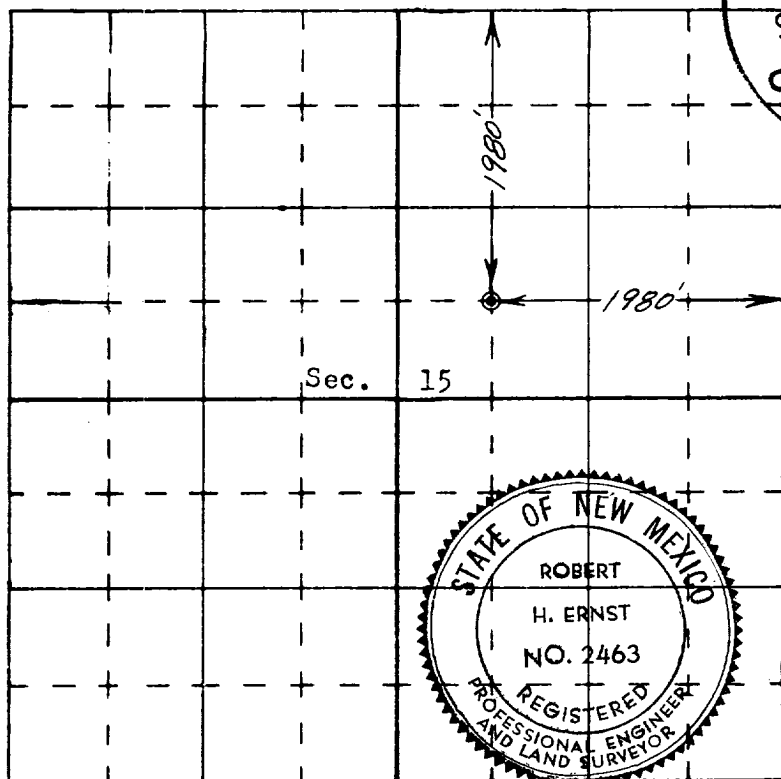
Operator TENNECO OIL COMPANY		Lease SANTA FE RAILROAD		Well No 1
Unit Letter G	Section 15	Township 17 North	Range 9 West	County McKinley
Actual Footage Location of Well:				
1980	feet from the	North	line and	1980
			feet from the	East
Ground Level Elev 7098' ungraded	Producing Formation Hospah		Dedicated Acreage: 40	Acres

1. Outline the acreage dedicated to the subject well by colored pencil or hatchure marks on the plat below.
2. If more than one lease is dedicated to the well, outline each and identify the ownership thereof (both as to working interest and royalty).
3. If more than one lease of different ownership is dedicated to the well, have the interests of all owners been consolidated by communitization, unitization, force-pooling, etc?

☐ Yes ☐ No If answer is "yes," type of consolidation

If answer is "no," list the owners and tract descriptions which have actually consolidated. (Use reverse side of this form if necessary.)

No allowable will be assigned to the well until all interests have been consolidated (by communitization, unitization, forced-pooling, or otherwise) or until a non standard unit, eliminating such interests, has been approved by the Commission.



CERTIFICATION

I hereby certify that the information contained herein is true and complete to the best of my knowledge and belief.

Harold C. Nichols
 Name
 Harold C. Nichols
 Position
 Senior Production Clerk
 Company
 Tenneco Oil Company
 Date
 August 30, 1966

I hereby certify that the well location shown on this plat was plotted from field notes of actual surveys made by me or under my supervision, and that the same is true and correct to the best of my knowledge and belief.

23 August 1966
 Date Surveyed
Robert H. Ernst
 Registered Professional Engineer
 and/or Land Surveyor
 Robert H. Ernst
 N. Mex. PE & LS 2463
 Certificate No.