

NUMBER OF COPIES RECEIVED	
DISTRIBUTION	
SANTA FE	1
FILE	1
U.S.G.S.	2
LAND OFFICE	
TRANSPORTER	
OIL	
GAS	
PRODUCTION	
ICE	
OPERATOR	

NEW MEXICO OIL CONSERVATION COMMISSION
Santa Fe, New Mexico

Form C-101
Revised (12/1/55)

NOTICE OF INTENTION TO DRILL

Notice must be given to the District Office of the Oil Conservation Commission and approval obtained before drilling or recompletion begins. If changes in the proposed plan are considered advisable, a copy of this notice showing such changes will be returned to the sender. Submit this notice in **QUINTUPLICATE**. One copy will be returned following approval. See additional instructions in Rules and Regulations of the Commission. If State Land submit 6 Copies Attach Form C- 128 in triplicate to first 3 copies of form C-101

FARMINGTON, NEW MEXICO
(Place)

May 9, 1966
(Date)

OIL CONSERVATION COMMISSION
SANTA FE, NEW MEXICO

Gentlemen:

You are hereby notified that it is our intention to commence the Drilling of a well to be known as

BENSON-MONTIN-GREER DRILLING CORP.

(Company or Operator)

SOUTH UNICO
(Lease)

Well No. **1**, in **L** (Unit) The well is

located **1980** feet from the **South** line and **660** feet from the

West line of Section **9**, T. **16N**, R. **6W**, NMPM.

(GIVE LOCATION FROM SECTION LINE) **Wildcat** Pool, **McKinley** County

If State Land the Oil and Gas Lease is No.

If patented land the owner is **Santa Fe Railroad**

Address

We propose to drill well with drilling equipment as follows: **Rotary tools**

The status of plugging bond is **In effect**

Drilling Contractor **S & B Drilling Company**

We intend to complete this well in the **Gallup** formation at an approximate depth of **1600** feet.

CASING PROGRAM

We propose to use the following strings of Casing and to cement them as indicated:

Size of Hole	Size of Casing	Weight per Foot	New or Second Hand	Depth	Sacks Cement
6-3/4"	5-1/2"	15.5#	New	700'	50
4-3/4"	3-1/2"	7.8#	New	1600'	50

If changes in the above plans become advisable we will notify you immediately.

ADDITIONAL INFORMATION (If recompletion give full details of proposed plan of work.)

If commercial production is indicated, the producing formation will be sand-oil fractured.

Approved.....
Except as follows:

FOR 60 DAYS UNLESS
(DRILLING COMMENCED,

EXPIRES

OIL CONSERVATION COMMISSION

By

Sincerely yours,

BENSON-MONTIN-GREER DRILLING CORP.

(Company or Operator)

By

Position

Engineer

Send Communications regarding well to

Name **Benson-Montin-Greer Drilling Corp.**

Address **221 Petroleum Center Building**
FARMINGTON, NEW MEXICO



**NEW MEXICO OIL CONSERVATION COMMISSION
WELL LOCATION AND ACERAGE DEDICATION PLAT**

All distances must be from the outer boundaries of the Section

Operator BENSON-MONTIN-GREER DRILLING CORP.			Lease SOUTH CHICO		Well No.
Unit Letter L	Section 9	Township 16 NORTH	Range 6 WEST	County McKINLEY	
Actual Footage Location of Well: 1980 feet from the SOUTH line and 660 feet from the WEST line					
Ground Level Elev. 6481.0	Producing Formation Gallup	Pool Wildcat	Dedicated Acreage 40		Acres

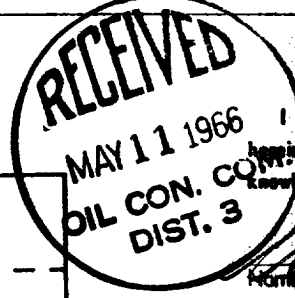
1. Outline the acreage dedicated to the subject well by colored pencil or hachure marks on the plat below.
2. If more than one lease is dedicated to the well, outline each and identify the ownership thereof (both as to working interest and royalty).
3. If more than one lease of different ownership is dedicated to the well, have the interests of all owners been consolidated by communitization, unitization, force-pooling, etc?

☒ Yes ☐ No If answer is "yes," type of consolidation

If answer is "no," list the owners and tract descriptions which have actually consolidated. (Use reverse side of this form if necessary.)

No allowable will be assigned to the well until all interests have been consolidated (by communitization, unitization, forced-pooling, or otherwise) or until a non standard unit, eliminating such interests, has been approved by the Commission.

CERTIFICATION



I hereby certify that the information contained herein is true and complete to the best of my knowledge and belief.

[Signature]
Name _____
Engineer

Benson-Montin-Greer Drilling Corp.

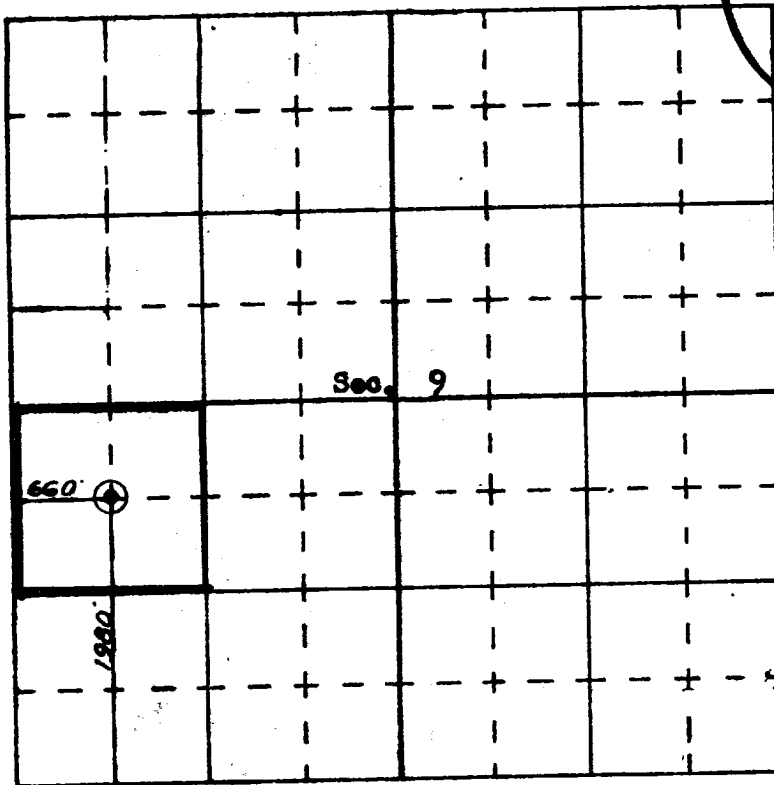
Company **May 9, 1966**

Date _____

I hereby certify that the well location shown on this plat was plotted from field notes of actual surveys made by me or under my supervision, and that the same is true and correct to the best of my knowledge and belief.

May 2, 1966

Date Surveyed _____
 Registered Professional Engineer
 and/or Licensed Surveyor
[Signature]
 Name _____



SCALE—4 INCHES EQUALS 1 MILE