

NEW MEXICO OIL CONSERVATION COMMISSION  
Santa Fe, New Mexico

## NOTICE OF INTENTION TO DRILL OR RECOMPLETE

Notice must be given to the District Office of the Oil Conservation Commission and approval obtained before drilling or recompletion begins. If changes in the proposed plan are considered advisable, a copy of this notice showing such changes will be returned to the sender. Submit this notice in **QUINTUPLICATE**. One copy will be returned following approval. See additional instructions in Rules and Regulations of the Commission.

Tombstone, Arkansas  
(Place)

November 17th, 1952  
(Date)

OIL CONSERVATION COMMISSION  
SANTA FE, NEW MEXICO

Gentlemen:

You are hereby notified that it is our intention to commence the (Drilling) (~~Recompletion~~) of a well to be known as

J. J. Madley

(Company or Operator)

Section 11  
(Lease)

Well No. 500, in \_\_\_\_\_ (Unit) The well is

located 330 feet from the East line and 330 feet from the

South line of Section 11, T. 14 N., R. 10 E., NMPM.

(GIVE LOCATION FROM SECTION LINE) \_\_\_\_\_ Pool, McKinley County

If State Land the Oil and Gas Lease is No. \_\_\_\_\_

If patented land the owner is J. J. Madley

Address 1013 Fruit Ave. N.E. Albuquerque, New Mexico

We propose to drill well with drilling equipment as follows:

rotary rig

The status of plugging bond is a \$10,000.00 blanket bond written by

J. J. Madley Company of Santa Fe, New Mexico.

Drilling Contractor Shuman Drilling Company of San Angelo, Texas.

We intend to complete this well in the \_\_\_\_\_

formation at an approximate depth of 200 to 2,000 feet.

### CASING PROGRAM

We propose to use the following strings of Casing and to cement them as indicated:

Size of Hole	Size of Casing	Weight per Foot	New or Second Hand	Depth	Sacks Cement
<u>12"</u>	<u>9 5/8"</u>	<u>26 lb</u>	<u>new</u>	<u>60'</u>	<u>top to bottom</u>
<u>If the well appears to be a producer, we propose to set either 9" or 10" new casing</u>					
<u>from the top of the hole down through the produce producing formation and cement it</u>					
<u>with enough cement to properly complete the well as a producer or as per your rules.</u>					

If changes in the above plans become advisable we will notify you immediately.

ADDITIONAL INFORMATION (If recompletion give full details of proposed plan of work.)

NOV 17 1952

Approved \_\_\_\_\_, 19\_\_\_\_\_  
Except as follows:

Sincerely yours,

J. J. Madley  
(Company or Operator)

By J. J. Madley

Position Field Agent

Send Communications regarding well to

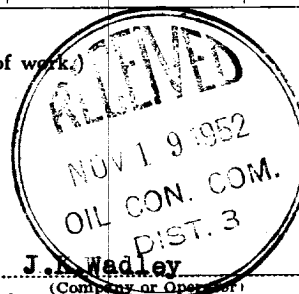
Name J. J. Madley

Address Tombstone, Arkansas

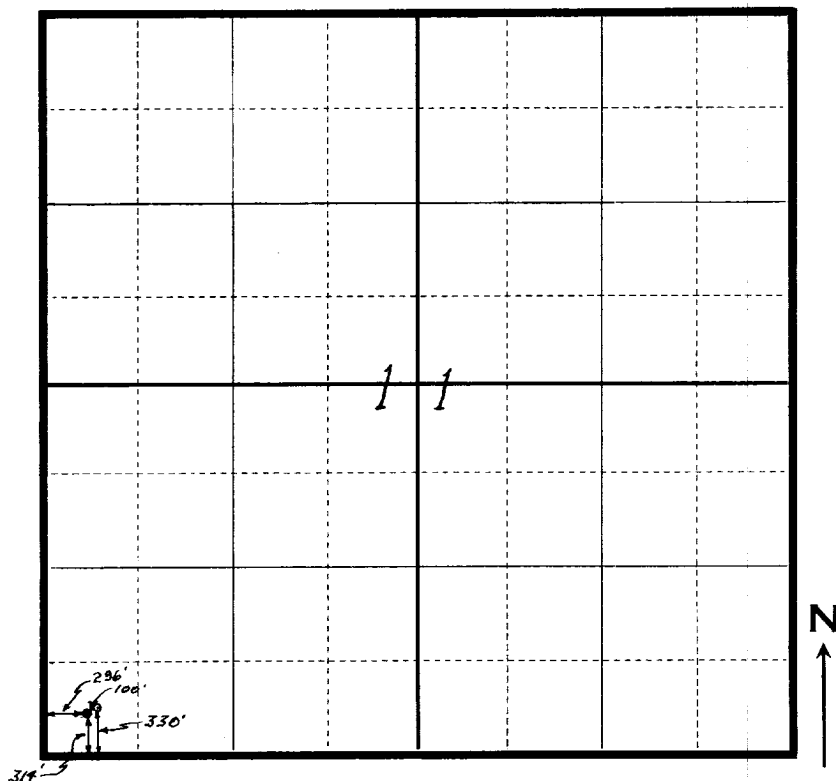
OIL CONSERVATION COMMISSION

By R. R. Goussier

Title \_\_\_\_\_



Company J.K. WADLEY  
Lease S. DYSART Well No. 1  
Section 11 Township 14N. Range 10W. N. M. P. M.  
Location North 330 feet from South line and East 396 feet from  
West line of Section



McKinley County, New Mexico. Scale: 4 Inches = 1 Mile.

This is to certify that the above plat was made from field notes of actual surveys made by me or under my supervision and that the representations thereon set forth are true and correct to the best of my knowledge and belief.

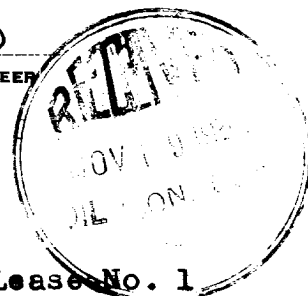
*Edmund Ross*  
NEW MEXICO REGISTERED PROFESSIONAL ENGINEER  
AND/OR LAND SURVEYOR NO. 81

Seal:

Surveyed November 12, 195 2

• Existing well -- S. Dysart Community Lease No. 1

• Proposed drilling-site



OIL CONSERVATION COMMISSION		
AZTEC DISTRICT OFFICE		
No. Copies Received <u>3</u>		
DISTRIBUTION		
	NO. FURNISHED	
Operator		
Santa Fe		
Proration Office		
State Land Office		
U. S. G. S.	<u>2</u>	
Transporter		<input checked="" type="checkbox"/>
File		