

UNITED STATES
DEPARTMENT OF THE INTERIOR
GEOLOGICAL SURVEY

031
30-833-20012

APPLICATION FOR PERMIT TO DRILL, DEEPEN, OR PLUG BACK

1a. TYPE OF WORK
 DRILL DEEPEN PLUG BACK

b. TYPE OF WELL
 OIL WELL GAS WELL OTHER

2. NAME OF OPERATOR
 Tenneco Oil Company

3. ADDRESS OF OPERATOR
 P. O. Box 1714, Durango, Colorado

4. LOCATION OF WELL (Report location clearly and in accordance with any State requirements.)*
 At surface
 1650 FNL 330 FEL
 At proposed prod. zone Lot 4

5. LEASE DESIGNATION AND SERIAL NO.
 NM 081208

6. IF INDIAN, ALLOTTEE OR TRIBE NAME

7. UNIT AGREEMENT NAME

8. FARM OR LEASE NAME
 Hospah

9. WELL NO.
 #7

10. FIELD AND POOL, OR WILDCAT
 So. Hospah Lower Sand

11. SEC., T., R., M., OR BLK. AND SURVEY OR AREA
 Sec. 12, T-17-N, R-9-W

12. COUNTY OR PARISH
 McKinley

13. STATE
 New Mexico

14. DISTANCE IN MILES AND DIRECTION FROM NEAREST TOWN OR POST OFFICE*

15. DISTANCE FROM PROPOSED* LOCATION TO NEAREST PROPERTY OR LEASE LINE, FT. (Also to nearest drlg. unit line, if any)

16. NO. OF ACRES IN LEASE
 52

17. NO. OF ACRES ASSIGNED TO THIS WELL
 52

18. DISTANCE FROM PROPOSED LOCATION* TO NEAREST WELL, DRILLING, COMPLETED, OR APPLIED FOR, ON THIS LEASE, FT.

19. PROPOSED DEPTH
 1700

20. ROTARY OR CABLE TOOLS
 Rotary

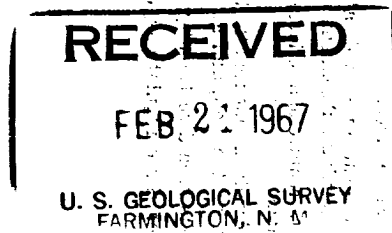
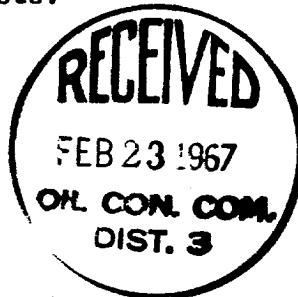
21. ELEVATIONS (Show whether DF, RT, GR, etc.)
 6958 GR

22. APPROX. DATE WORK WILL START*
 March 2, 1967

23. PROPOSED CASING AND CEMENTING PROGRAM

SIZE OF HOLE	SIZE OF CASING	WEIGHT PER FOOT	SETTING DEPTH	QUANTITY OF CEMENT
12-1/4	9-5/8	32.4#	90	Cmt to surface
8-3/4	7	23#	1700	150 sx minimum

We plan to drill to aprox. TD 1700. Ran GRD and IES logs. Run casing as shown above, complete as an oil well if productive. Run tbg and conduct potential tests.



IN ABOVE SPACE DESCRIBE PROPOSED PROGRAM: If proposal is to deepen or plug back, give data on present productive zone and proposed new productive zone. If proposal is to drill or deepen directionally, give pertinent data on subsurface locations and measured and true vertical depths. Give blowout preventer program, if any.

24. SIGNED Harold C. Nichols TITLE Senior Production Clerk DATE February 20, 1967

(This space for Federal or State office use)

PERMIT NO. _____ APPROVAL DATE _____

APPROVED BY _____ TITLE _____ DATE _____

CONDITIONS OF APPROVAL, IF ANY:

5 Usgs, Farmington,
1 File

*See Instructions On Reverse Side

**NEW MEXICO OIL CONSERVATION COMMISSION
WELL LOCATION AND ACERAGE DEDICATION PLAT**

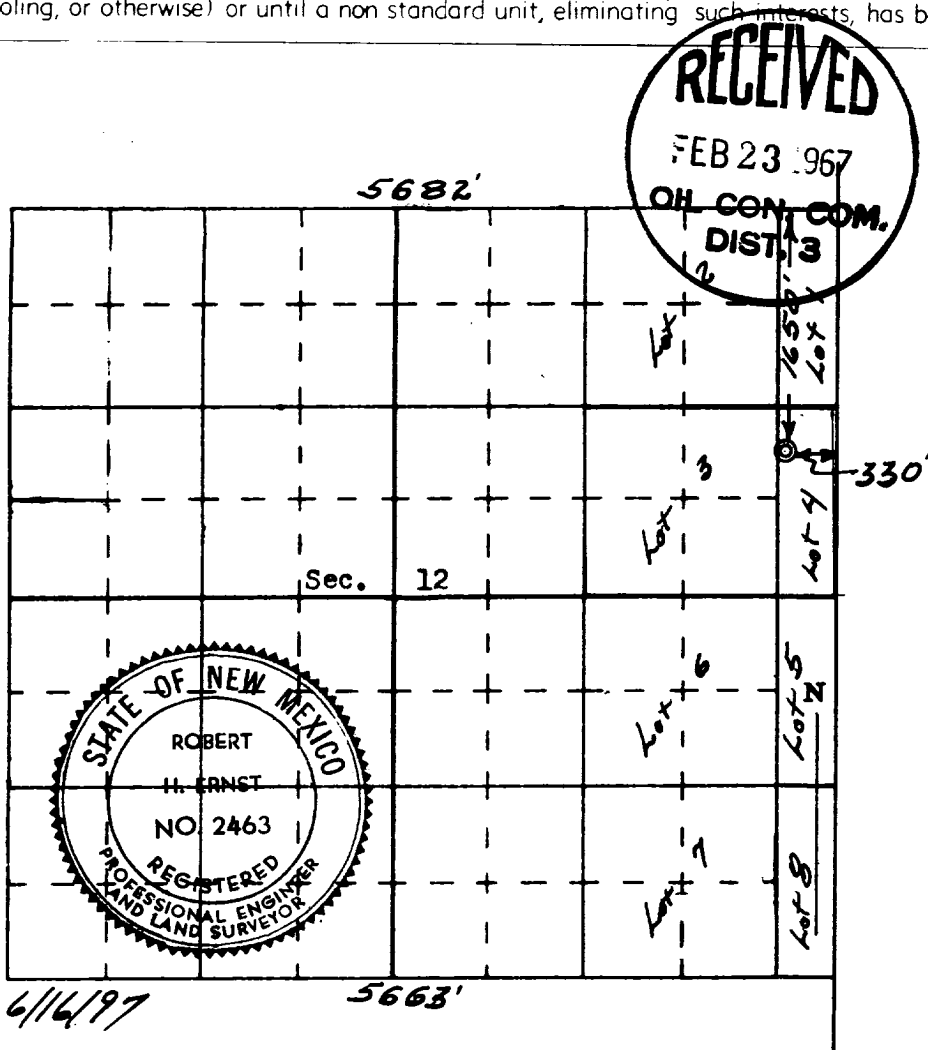
All distances must be from the outer boundaries of the Section

Operator TENNECO OIL COMPANY		Lease HOSPAH		Well No. 7	
Unit Letter Lot 4 H	Section 12	Township 17 North	Range 9 West	County McKinley	
Actual Footage Location of Well: 1650 feet from the North line and 330 feet from the East line					
Ground Level Elev 6958' ungraded	Producing Formation South Hospah Lower Sand	Pool South Hospah Lower Sand	Dedicated Acreage: Lot 4 52 Acres		

1. Outline the acreage dedicated to the subject well by colored pencil or hachure marks on the plat below.
2. If more than one lease is dedicated to the well, outline each and identify the ownership thereof (both as to working interest and royalty),
3. If more than one lease of different ownership is dedicated to the well, have the interests of all owners been consolidated by communitization, unitization, force-pooling, etc?
 Yes No If answer is "yes," type of consolidation

If answer is "no," list the owners and tract descriptions which have actually consolidated. (Use reverse side of this form if necessary.)

No allowable will be assigned to the well until all interests have been consolidated (by communitization, unitization, forced-pooling, or otherwise) or until a non standard unit, eliminating such interests, has been approved by the Commission.



CERTIFICATION

I hereby certify that the information contained herein is true and complete to the best of my knowledge and belief.

Harold C. Nichols
 Name Harold C. Nichols
 Position Senior Production Clerk
 Company Tenneco Oil Company
 Date February 20, 1967

I hereby certify that the well location shown on this plat was plotted from field notes of actual surveys made by me or under my supervision, and that the same is true and correct to the best of my knowledge and belief.

20 January 1967
 Date Surveyed
Robert H. Ernst
 Registered Professional Engineer
 and/or Land Surveyor
 Robert H. Ernst
 N. Mex. PE & LS 2463
 Certificate No. _____