

UNITED STATES  
DEPARTMENT OF THE INTERIOR  
GEOLOGICAL SURVEY

5. LEASE DESIGNATION AND SERIAL NO.

NM 081208

6. IF INDIAN, ALLOTTEE OR TRIBE NAME

7. UNIT AGREEMENT NAME

8. FARM OR LEASE NAME

Hospah

9. WELL NO.

14

10. FIELD AND POOL, OR WILDCAT

South Hospah Upper Sand

11. SEC., T., R., M., OR BLK.  
AND SURVEY OR AREA

Sec 12, T-17-N, R-9-W

12. COUNTY OR PARISH

13. STATE  
New Mexico

McKinley

1a. TYPE OF WORK

DRILL ☒DEEPEN ☐PLUG BACK ☐

b. TYPE OF WELL

OIL  
WELL ☐GAS  
WELL ☐

OTHER

SINGLE  
ZONE ☐MULTIPLE  
ZONE ☐

2. NAME OF OPERATOR

Tenneco Oil Company

3. ADDRESS OF OPERATOR

P. O. Box 1714, Durango, Colorado 81301

4. LOCATION OF WELL (Report location clearly and in accordance with any State requirements.)\*

At surface

At proposed prod. 1700 FNL, 1300 FWL, Unit E

14. DISTANCE IN MILES AND DIRECTION FROM NEAREST TOWN OR POST OFFICE\*

15. DISTANCE FROM PROPOSED\*

LOCATION TO NEAREST  
PROPERTY OR LEASE LINE, FT.  
(Also to nearest drlg. unit line, if any)

16. NO. OF ACRES IN LEASE

17. NO. OF ACRES ASSIGNED  
TO THIS WELL

40 Acres

18. DISTANCE FROM PROPOSED LOCATION\*  
TO NEAREST WELL, DRILLING, COMPLETED,  
OR APPLIED FOR, ON THIS LEASE, FT.

19. PROPOSED DEPTH

1700

20. ROTARY OR CABLE TOOLS

Rotary

21. ELEVATIONS (Show whether DF, RT, GR, etc.)

7057 Gr.

22. APPROX. DATE WORK WILL START\*

23.

## PROPOSED CASING AND CEMENTING PROGRAM

SIZE OF HOLE	SIZE OF CASING	WEIGHT PER FOOT	SETTING DEPTH	QUANTITY OF CEMENT
9-7/8"	7-5/8"	26#	60'	Cement to surface
6-3/4"	4-1/2"	10.5#	1700'	200 sx, circ to surface

We will drill to an approximate T.D. of 1700'. Casing will be run as shown above. Well will be logged, tests run, and completed as an oil well.

RECEIVED  
NOV 6 1967  
OIL CON. COM.  
DIST. 3

RECEIVED

NOV 3 1967

U. S. GEOLOGICAL SURVEY  
EDMUNDSON BUILDING

IN ABOVE SPACE DESCRIBE PROPOSED PROGRAM: If proposal is to deepen or plug back, give data on present productive zone and proposed new productive zone. If proposal is to drill or deepen directionally, give pertinent data on subsurface locations and measured and true vertical depths. Give blowout preventer program, if any.

24.

SIGNED

M. K. Wagner

TITLE

DATE 11/2/67

(This space for Federal or State office use)

PERMIT NO.

APPROVAL DATE

APPROVED BY

TITLE

DATE

CONDITIONS OF APPROVAL, IF ANY:

Filed 8-104 for USC

\*See Instructions On Reverse Side

# NEW MEXICO OIL CONSERVATION COMMISSION

## WELL LOCATION AND ACERAGE DEDICATION PLAT

All distances must be from the outer boundaries of the Section

Operator <b>TENNECO OIL COMPANY</b>		Lease <b>HOSPAL</b>		Well No <b>14</b>	
Unit Letter <b>E</b>	Section <b>12</b>	Township <b>17 North</b>	Range <b>9 West</b>	County <b>Mc Kinley</b>	
Actual Footage Location of Well <b>1700</b> feet from the <b>North</b> line and <b>1300</b> feet from the <b>West</b> line					
Ground Level Elev. <b>7057' ungraded</b>		Producing Formation <b>South Hespah Upper Sand</b>		Dedicated Acreage <b>40</b> Acres	

- Outline the acreage dedicated to the subject well by colored pencil or hatchure marks on the plat below.
- If more than one lease is dedicated to the well, outline each and identify the ownership thereof (both as to working interest and royalty).
- If more than one lease of different ownership is dedicated to the well, have the interests of all owners been consolidated by communitization, unitization, force-pooling, etc?

Yes ☐ No ☐ If answer is "yes," type of consolidation \_\_\_\_\_

If answer is "no," list the owners and tract descriptions which have actually consolidated (Use reverse side of this form if necessary) \_\_\_\_\_

No allowable will be assigned to the well until all interests have been consolidated (by communitization, unitization, forced-pooling, or otherwise) or until a non standard unit, eliminating such interests, has been approved by the Commission.

### CERTIFICATION

I hereby certify that the information contained herein is true and complete to the best of my knowledge and belief.

Name M. K. Wagner  
M. K. Wagner

Position \_\_\_\_\_

Company Tenneco Oil Company

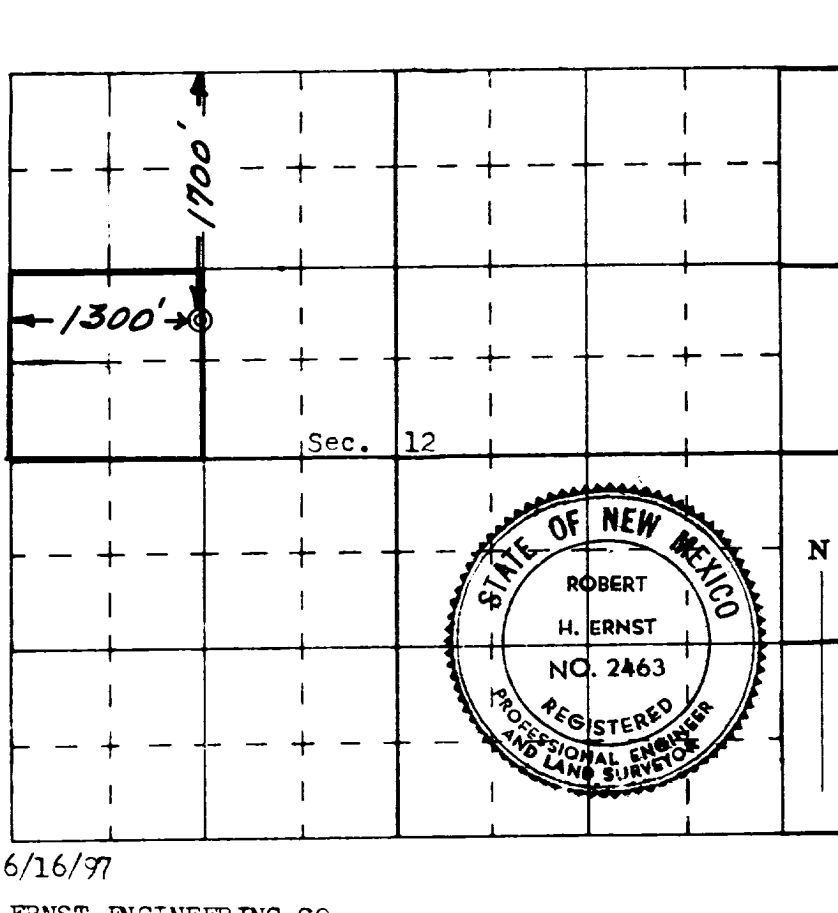
Date NOV 6 1967

I hereby certify that the location shown on this plat was based on field notes of actual surveys made by me or under my supervision, and that the same is true and correct to the best of my knowledge and belief.

Date Surveyed 31 October 1967

Registered Professional Engineer and/or Land Surveyor  
Robert H. Ernst  
N. Mex. PE & LS 2463

Certificate No. \_\_\_\_\_



6/16/97

ERNST ENGINEERING CO.  
DURANGO, COLORADO