

UNITED STATES  
DEPARTMENT OF THE INTERIOR  
GEOLOGICAL SURVEY

APPLICATION FOR PERMIT TO DRILL, DEEPEN, OR PLUG BACK

1a. TYPE OF WORK

DRILL ☒

DEEPEN ☐

PLUG BACK ☐

b. TYPE OF WELL

OIL  
WELL ☒

GAS  
WELL ☐

OTHER

SINGLE  
ZONE ☐

MULTIPLE  
ZONE ☐

2. NAME OF OPERATOR

Tenneco Oil Company

3. ADDRESS OF OPERATOR

P. O. Box 1714, Durango, Colorado 81301

4. LOCATION OF WELL (Report location clearly and in accordance with any State requirements.\*)

At surface

~~FWL~~ FNL, ~~FWL~~ FWL, Unit F

At proposed prod. zone

1755 2330

14. DISTANCE IN MILES AND DIRECTION FROM NEAREST TOWN OR POST OFFICE\*

16. DISTANCE FROM PROPOSED\*

LOCATION TO NEAREST  
PROPERTY OR LEASE LINE, FT.  
(Also to nearest drlg. unit line, if any)

18. NO. OF ACRES IN LEASE

18. DISTANCE FROM PROPOSED LOCATION\*  
TO NEAREST WELL, DRILLING, COMPLETED,  
OR APPLIED FOR, ON THIS LEASE, FT.

19. PROPOSED DEPTH

1700

17. NO. OF ACRES ASSIGNED  
TO THIS WELL

40

20. ROTARY OR CABLE TOOLS

Rotary

21. ELEVATIONS (Show whether DF, RT, GR, etc.)

7017 Gr.

22. APPROX. DATE WORK WILL START\*

23. PROPOSED CASING AND CEMENTING PROGRAM

SIZE OF HOLE	SIZE OF CASING	WEIGHT PER FOOT	SETTING DEPTH	QUANTITY OF CEMENT
9-7/8"	7-5/8"	26#	60	Cmt to surface
6-3/4"	4-1/2"	10.5#	1700	200 sx, cmt to surface

We will drill to an approximate T.D. of 1700  
Run casing as shown above, log, run tests and  
complete as oil well.



IN ABOVE SPACE DESCRIBE PROPOSED PROGRAM: If proposal is to deepen or plug back, give data on present productive zone and proposed new productive zone. If proposal is to drill or deepen directionally, give pertinent data on subsurface locations and measured and true vertical depths. Give blowout preventer program, if any.

24.

SIGNED

*M. K. Wagner*  
M. K. Wagner

TITLE

DATE 11/6/67

(This space for Federal or State office use)

PERMIT NO.

APPROVAL DATE

APPROVED BY

TITLE

DATE

CONDITIONS OF APPROVAL, IF ANY:

USGS (5)

\*See Instructions On Reverse Side

11/11/67 0-104  
for NSC

# NEW MEXICO OIL CONSERVATION COMMISSION

## WELL LOCATION AND ACERAGE DEDICATION PLAT

All distances must be from the outer boundaries of the Section

Operator **TENNECO OIL COMPANY** Lease **HOSPAS** Well No **16**  
 Unit Letter **F** Section **12** Township **17 North** Range **9 West** County **McKinley**  
 Actual Surface Location of Well **1755'** Section **12** Township **17 North** Range **9 West** Line  
 Declared Acreage **40** Acres  
**7017' ungraded** **South Hospah Upper Sand** **South Hospah Upper Sand**

Outline the acreage dedicated to the subject well by colored pencil or machine marks on the plat below

2. If more than one lease is dedicated to the well, outline each and identify the ownership thereof, path to working interest and road etc.

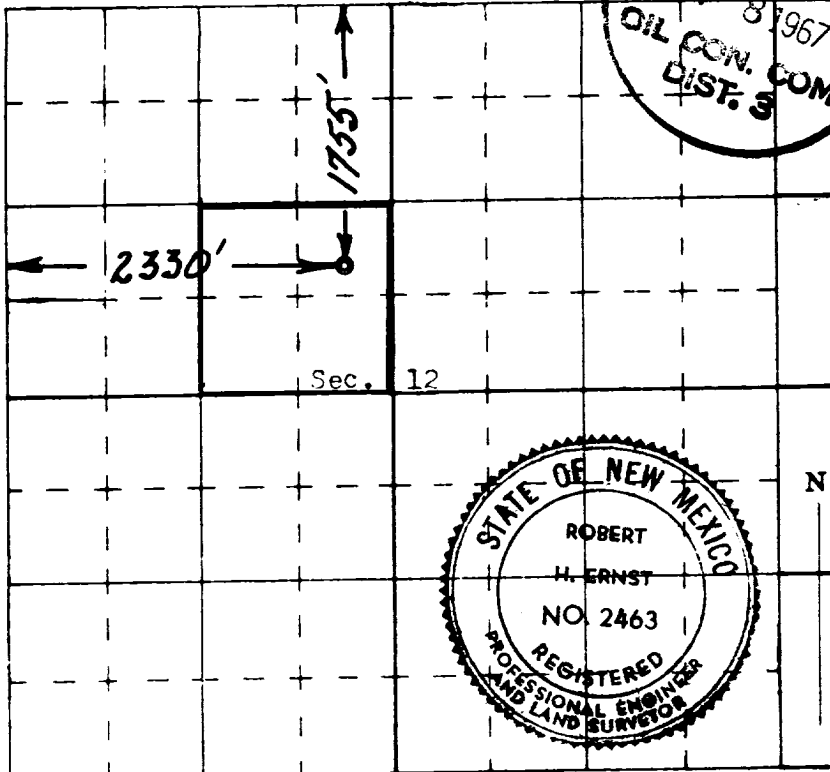
3. If more than one lease of different ownership is dedicated to the well, have the interests of all owners been consolidated by communitization, unitization, forced-pooling, etc?

Yes ☐ No ☐ If answer is "yes," type of consolidation

If answer is "no," list the owners and tract descriptions which have actually consolidated. (Use reverse side of this form if necessary.)

No allowable will be assigned to the well until all interests have been consolidated (by communitization, unitization, forced-pooling, or otherwise) or until a non-standard unit, eliminating such interests, has been approved by the Commission.

Dedicated Acreage Joint W/#2 & #23



### CERTIFICATION

I hereby certify that the information contained herein is true and complete to the best of my knowledge and belief.

Name **M. K. Wagner**

Position **Tenneco Oil Company**

Company **November 6, 1967**

Date

I hereby certify that the well location shown on this plat was plotted from field notes of actual surveys made by me or under my supervision, and that the same is true and correct to the best of my knowledge and belief.

31 October 1967

Robert H. Ernst  
 Registered Professional Engineer  
 and/or Land Surveyor

Robert H. Ernst  
 N. Mex. PE & LS 2463

Certificate No.

6/16/97

Ernst Engineering Co.  
 Durango, Colorado