

UNITED STATES  
DEPARTMENT OF THE INTERIOR  
GEOLOGICAL SURVEY

## APPLICATION FOR PERMIT TO DRILL, DEEPEN, OR PLUG BACK

## 1a. TYPE OF WORK

DRILL ☒DEEPEN ☐PLUG BACK ☐

## b. TYPE OF WELL

OIL  
WELL ☐GAS  
WELL ☐OTHER ☐ Water Injection ☐ SINGLE  
ZONEMULTIPLE  
ZONE ☐

## 2. NAME OF OPERATOR

Tenneco Oil Company

## 3. ADDRESS OF OPERATOR

P. O. Box 1714, Durango, Colorado 81301

4. LOCATION OF WELL (Report location clearly and in accordance with any State requirements.)\*  
At surface

At proposed prod. zone 2250 FNL, 3000 FWL

Unit G

## 14. DISTANCE IN MILES AND DIRECTION FROM NEAREST TOWN OR POST OFFICE\*

10. DISTANCE FROM PROPOSED\*  
LOCATION TO NEAREST  
PROPERTY OR LEASE LINE, FT.  
(Also to nearest drlg. unit line, if any)

## 16. NO. OF ACRES IN LEASE

17. NO. OF ACRES ASSIGNED  
TO THIS WELL18. DISTANCE FROM PROPOSED LOCATION\*  
TO NEAREST WELL, DRILLING, COMPLETED,  
OR APPLIED FOR, ON THIS LEASE, FT.

## 19. PROPOSED DEPTH

## 20. ROTARY OR CABLE TOOLS

## 21. ELEVATIONS (Show whether DF, RT, GR, etc.)

6996 Gr.

## 22. APPROX. DATE WORK WILL START\*

## 23. PROPOSED CASING AND CEMENTING PROGRAM

SIZE OF HOLE	SIZE OF CASING	WEIGHT PER FOOT	SETTING DEPTH	QUANTITY OF CEMENT
9-7/8"	7-5/8"	26#	60	Cement to surface
6-3/4"	4-1/2"	10.5#	1700	200 sq. cement to surface

This well will be a water injection well for the  
Hospah waterflood program. Casing program shown  
above.



IN ABOVE SPACE DESCRIBE PROPOSED PROGRAM: If proposal is to deepen or plug back, give data on present productive zone and proposed new productive zone. If proposal is to drill or deepen directionally, give pertinent data on surface locations and measured and true vertical depths. Give blowout preventer program, if any.

24.

SIGNED

*M. K. Wagner*  
M. K. Wagner

TITLE

DATE 11/10/67

(This space for Federal or State office use)

PERMIT NO.

APPROVAL DATE

APPROVED BY

*4*

TITLE

DATE

CONDITIONS OF APPROVAL, IF ANY:

USGS (5)

\*See Instructions On Reverse Side

**NEW MEXICO OIL CONSERVATION COMMISSION  
WELL LOCATION AND ACERAGE DEDICATION PLAT**

All distances must be from the outer boundaries of the Section

Operator <b>TENNECO OIL COMPANY</b>			Lease <b>HOSPALH</b>		Well No <b>17</b>
Unit Letter <b>G</b>	Section <b>12</b>	Township <b>17 North</b>	Range <b>9 West</b>	County <b>Mc Kinley</b>	
Actual Footage Location of Well: <b>2250</b> feet from the <b>North</b> line and <b>3000</b> feet from the <b>West</b> line					
Ground Level Elev. <b>6996' ungraded</b>	Producing Formation <b>South Hospah Upper Sand</b>	Rock <b>South Hospah Upper Sand</b>		Dedicated Acreage <b>40</b>	Acres

1. Outline the acreage dedicated to the subject well by colored pencil or hatchure marks on the plat below.
2. If more than one lease is dedicated to the well, outline each and identify the ownership thereof (both as to working interest and royalty).
3. If more than one lease of different ownership is dedicated to the well, have the interests of all owners been consolidated by communitization, unitization, force-pooling, etc?  
☐ Yes ☐ No If answer is "yes," type of consolidation: \_\_\_\_\_  
 If answer is "no," list the owners and tract descriptions which have actually consolidated (Use reverse side of this form if necessary). \_\_\_\_\_  
 No allowable well be assigned to the well until all interests have been consolidated (by communitization, unitization, forced-pooling, or otherwise) or until a non standard unit, eliminating such interests, has been approved by the Commission.



**CERTIFICATION**

I hereby certify that the information contained herein is true and complete to the best of my knowledge and belief.

Name M. K. Wagner

Position \_\_\_\_\_

Company Tenneco Oil Company

Date November 10, 1967

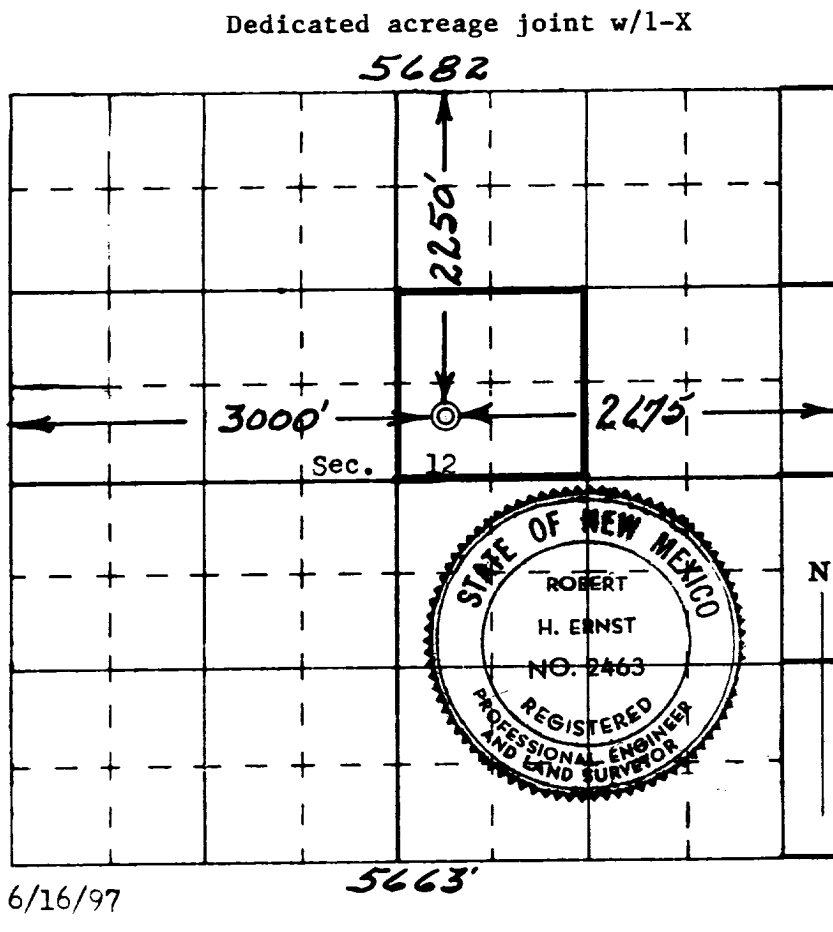
I hereby certify that the well location shown on this plat was plotted from field notes of actual surveys made by me or under my supervision, and that the same is true and correct to the best of my knowledge and belief.

Date Surveyed 31 October 1967

Robert H. Ernst  
Registered Professional Engineer  
and/or Land Surveyor

**Robert H. Ernst**  
**N. Mex. PE & LS 2463**

Certificate No. \_\_\_\_\_



6/16/97

**ERNST ENGINEERING CO.**  
**DURANGO, COLORADO**