

UNITED STATES
DEPARTMENT OF THE INTERIOR
GEOLOGICAL SURVEY

APPLICATION FOR PERMIT TO DRILL, DEEPEN, OR PLUG BACK

1a. TYPE OF WORK

DRILL ☒DEEPEN ☐PLUG BACK ☐

b. TYPE OF WELL

OIL
WELL ☒GAS
WELL ☐

OTHER

SINGLE
ZONE ☒MULTIPLE
ZONE ☐

2. NAME OF OPERATOR

Tenneco Oil Company

3. ADDRESS OF OPERATOR

Suite 1200 Lincoln Tower Bldg., Denver, Colorado

4. LOCATION OF WELL (Report location clearly and in accordance with any State requirements.)*

At surface

330' FNL & 330' FEL

At proposed prod. zone

14. DISTANCE IN MILES AND DIRECTION FROM NEAREST TOWN OR POST OFFICE*

15. DISTANCE FROM PROPOSED*

LOCATION TO NEAREST
PROPERTY OR LEASE LINE, FT.
(Also to nearest drilg. unit line, if any)

16. NO. OF ACRES IN LEASE

344

17. NO. OF ACRES ASSIGNED
TO THIS WELL

52

18. DISTANCE FROM PROPOSED LOCATION*
TO NEAREST WELL, DRILLING, COMPLETED,
OR APPLIED FOR, ON THIS LEASE, FT.

19. PROPOSED DEPTH

1655

20. ROTARY OR CABLE TOOLS

Rotary

21. ELEVATIONS (Show whether DF, RT, GR, etc.)

6941 GR

22. APPROX. DATE WORK WILL START*

Upon Approval

23.

PROPOSED CASING AND CEMENTING PROGRAM

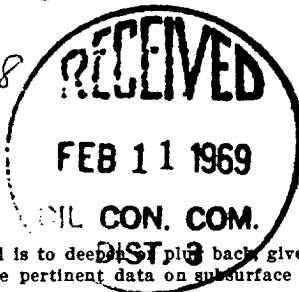
SIZE OF HOLE	SIZE OF CASING	WEIGHT PER FOOT	SETTING DEPTH	QUANTITY OF CEMENT
9-7/8"	7-5/8"	26#	60	Sufficient to circulate
6-3/4"	4-1/2"	10.5#	1655	Sufficient to circulate

Above well will be a 1655' South Hospah (Upper Sand) development well. If production is indicated, casing will be set at total depth, well will be perforated and treated as necessary to establish commercial production.

Corrected copy filed to show change in location of proposed well.

Joint with # 254 & # 28

NW 1/4 5.52



RECEIVED
FEB 10 1969

U. S. GEOLOGICAL SURVEY

IN ABOVE SPACE DESCRIBE PROPOSED PROGRAM: If proposal is to deepen or plug back give data on present production zone and proposed new productive zone. If proposal is to drill or deepen directionally, give pertinent data on subsurface locations and measured and true vertical depths. Give blowout preventer program, if any.

24.

SIGNED

Larry M. Riggs

TITLE District Office Supervisor

DATE 2-7-69

(This space for Federal or State office use)

PERMIT NO.

APPROVAL DATE

APPROVED BY

TITLE

DATE

CONDITIONS OF APPROVAL, IF ANY:

NEW MEXICO OIL CONSERVATION COMMISSION WELL LOCATION AND ACERAGE DEDICATION PLAT

All distances must be from the outer boundaries of the Section

Operator **TENNECO OIL COMPANY** Lease **HOSPAH UNIT**
 Section **12** Township **17 North** Range **9 West** Meridian **McKinley**
 Section **330** North **330** East
 Ungraded **Hospah Upper Sand** **Hospah, South (Upper Sand)** **52**

Outline the acreage dedicated to the subject well by colored pencil or non-fade marks on this plat.

Outline the acreage of each tract dedicated to the well, outline each one, and list the owner's name, acreage, and well name, and tract ownership.

If more than one lease of different ownership is dedicated to the well, have the interest in each tract been consolidated by consolidation, force-pooling, etc?

Yes ☐ No ☐ If answer is "yes," type of consolidation.

If answer is "no," list the owners and tract descriptions which have actually consolidated. Use reverse side of this form for details.

Is allowable well be assigned to the well unit if all interests have been consolidated by consolidation, force-pooling, or otherwise? If not, a non-standard unit, eliminating such interests, has been approved.



CERTIFICATION

I hereby certify that the information contained herein is true and complete to the best of my knowledge and belief.

Larry M. Riggs

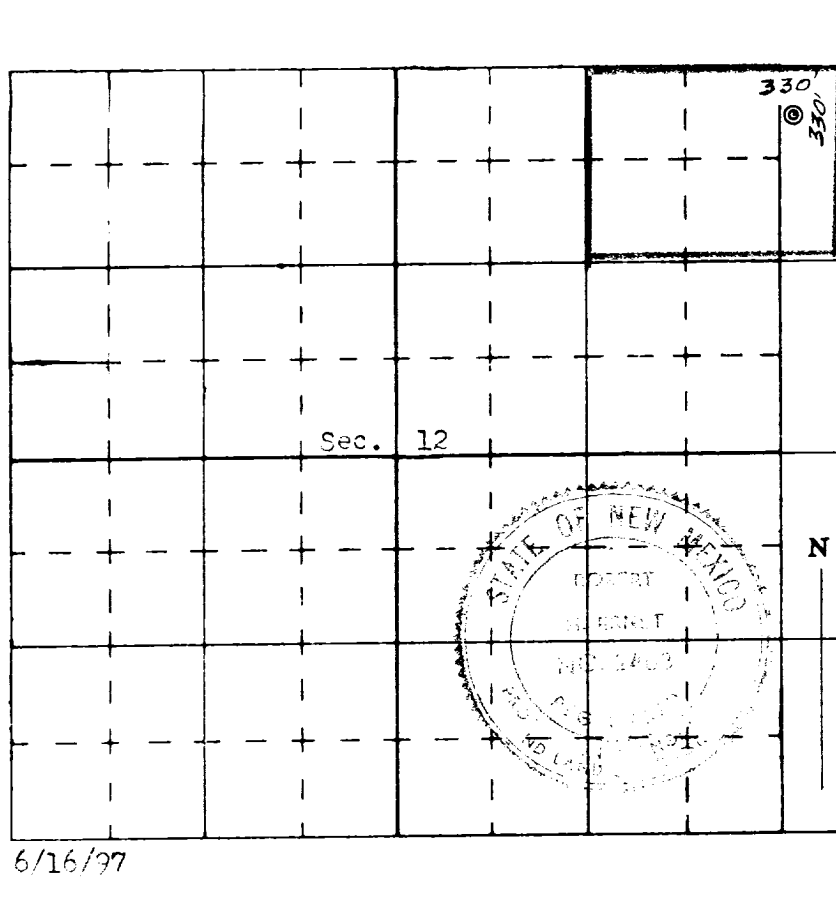
Larry M. Riggs
 District Office Supervisor
 Tenneco Oil Company
 2-7-69

I hereby certify that the well location shown on this plat was plotted from field notes of actual surveys made by me or under my supervision, and that the same is true and correct to the best of my knowledge and belief.

20 December 1968

Robert E. Ernst

Robert E. Ernst
 M. M. 11-6-11-68



6/16/97

Ernst Engineering Co.
 Durango, Colorado

