

**UNITED STATES
DEPARTMENT OF THE INTERIOR
GEOLOGICAL SURVEY**

031
~~30-633-20093~~

5. LEASE DESIGNATION AND SERIAL NO.
NM - 081208

6. IF INDIAN, ALLOTTEE OR TRIBE NAME

7. UNIT AGREEMENT NAME
South Hospah Unit

8. FARM OR LEASE NAME

9. WELL NO.
26

10. FIELD AND POOL, OR WILDCAT
Hospah South (Upper Sand)

11. SEC., T., R., M., OR BLK. AND SURVEY OR AREA
Sec. 12, T-17-N, R-9-W

12. COUNTY OR PARISH
McKinley

13. STATE
New Mexico

APPLICATION FOR PERMIT TO DRILL, DEEPEN, OR PLUG BACK

1a. TYPE OF WORK
DRILL **DEEPEN** **PLUG BACK**

b. TYPE OF WELL
OIL WELL **GAS WELL** **OTHER** **SINGLE ZONE** **MULTIPLE ZONE**

2. NAME OF OPERATOR
Tenneco Oil Company

3. ADDRESS OF OPERATOR
Suite 1200 Lincoln Tower Bldg., Denver, Colorado

4. LOCATION OF WELL (Report location clearly and in accordance with any State requirements.)*
 At surface **330' FNL & 380' FEL**
 At proposed prod. zone

14. DISTANCE IN MILES AND DIRECTION FROM NEAREST TOWN OR POST OFFICE*

15. DISTANCE FROM PROPOSED* LOCATION TO NEAREST PROPERTY OR LEASE LINE, FT. (Also to nearest drlg. unit line, if any)

16. NO. OF ACRES IN LEASE
344

17. NO. OF ACRES ASSIGNED TO THIS WELL
52

18. DISTANCE FROM PROPOSED LOCATION* TO NEAREST WELL, DRILLING, COMPLETED, OR APPLIED FOR, ON THIS LEASE, FT.

19. PROPOSED DEPTH
1655

20. ROTARY OR CABLE TOOLS
Rotary

21. ELEVATIONS (Show whether DF, RT, GR, etc.)
6941 GR

22. APPROX. DATE WORK WILL START*
Upon Approval

23. **PROPOSED CASING AND CEMENTING PROGRAM**

SIZE OF HOLE	SIZE OF CASING	WEIGHT PER FOOT	SETTING DEPTH	QUANTITY OF CEMENT
9-7/8"	7-5/8"	26#	60	Sufficient to circulate
6-3/4"	4-1/2"	10.5#	1655	Sufficient to circulate

Above well will be a 1655' South Hospah (Upper Sand) development well. If production is indicated, casing will be set at total depth, well will be perforated and treated as necessary to establish commercial production.



U. S. GEOLOGICAL SURVEY
DISTRICT OFFICE

IN ABOVE SPACE DESCRIBE PROPOSED PROGRAM: If proposal is to deepen or plug back, give data on present productive zone and proposed new productive zone. If proposal is to drill or deepen directionally, give pertinent data on subsurface locations and measured and true vertical depths. Give blowout preventer program, if any.

24. SIGNED Larry M. Riggs TITLE District Office Supervisor DATE 1-7-69

(This space for Federal or State office use)

PERMIT NO. _____ APPROVAL DATE _____

APPROVED BY [Signature] TITLE _____ DATE _____
 CONDITIONS OF APPROVAL, IF ANY:

**NEW MEXICO OIL CONSERVATION COMMISSION
WELL LOCATION AND ACERAGE DEDICATION PLAT**

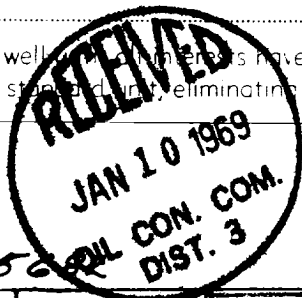
All distances must be from the outer boundaries of the Section

Operator TENNECO OIL COMPANY		Lease HOSP AH Unit		Well No 26
Unit Letter A	Section 12	Township 17 North	Range 9 West	County McKinley
Actual Footage Location of Well: 330 feet from the North line and 380 feet from the East line				
Ground Level Elev. 6941' ungraded	Producing Formation Hospah Upper Sand	Foot Hospah, South (Upper Sand)	Dedicated Acreage 52	Acres

1. Outline the acreage dedicated to the subject well by colored pencil or hatchure marks on the plat below.
2. If more than one lease is dedicated to the well, outline each and identify the ownership thereof (both as to working interest and royalty).
3. If more than one lease of different ownership is dedicated to the well, have the interests of all owners been consolidated by communitization, unitization, force-pooling, etc?
 Yes No If answer is "yes," type of consolidation

If answer is "no," list the owners and tract descriptions which have actually consolidated. (Use reverse side of this form if necessary)

No allowable will be assigned to the well if the interests have been consolidated (by communitization, unitization, forced-pooling, or otherwise) or until a non-stake plan, eliminating such interests, has been approved by the Commission.



CERTIFICATION

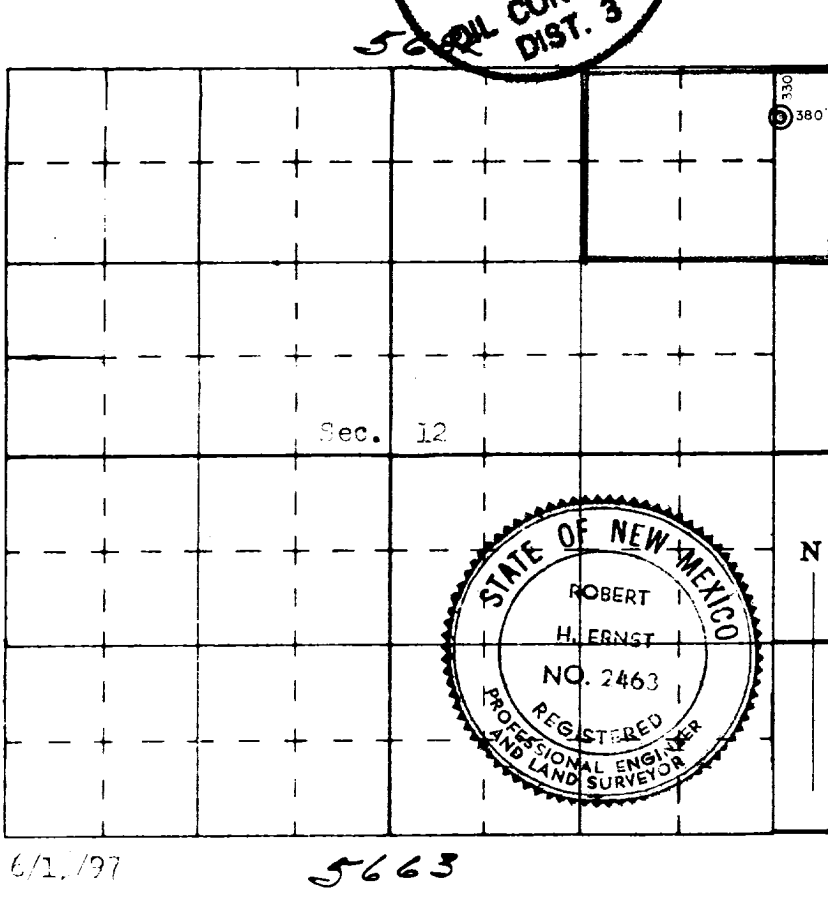
I hereby certify that the information contained herein is true and complete to the best of my knowledge and belief.

Name Larry M. Riggs
 Position **Larry M. Riggs**
District Office Supervisor
 Company **Tenneco Oil Company**
 Date **1-7-69**

I hereby certify that the well location shown on this plat was plotted from field notes of actual surveys made by me or under my supervision, and that the same is true and correct to the best of my knowledge and belief.

Date Surveyed **20 December 1968**

Robert H. Ernst
 Registered Professional Engineer
 and Land Surveyor
Robert H. Ernst
 N. Mex. P.E. & L.S. 2563



6/1/97

5663