

UNITED STATES
DEPARTMENT OF THE INTERIOR
GEOLOGICAL SURVEY

APPLICATION FOR PERMIT TO DRILL, DEEPEN, OR PLUG BACK

1a. TYPE OF WORK

DRILL ☒DEEPEN ☐PLUG BACK ☐

b. TYPE OF WELL

OIL
WELL ☒GAS
WELL ☐

OTHER

SINGLE
ZONE ☒MULTIPLE
ZONE ☐

2. NAME OF OPERATOR

Tenneco Oil Company

3. ADDRESS OF OPERATOR

Suite 1200 Lincoln Tower Bldg., Denver, Colorado

4. LOCATION OF WELL (Report location clearly and in accordance with any State requirements.)*

At surface

1620' FNL & 330' FEL

At proposed prod. zone

14. DISTANCE IN MILES AND DIRECTION FROM NEAREST TOWN OR POST OFFICE*

15. DISTANCE FROM PROPOSED*

LOCATION TO NEAREST
PROPERTY OR LEASE LINE, FT.
(Also to nearest drlg. unit line, if any)

16. NO. OF ACRES IN LEASE

344

17. NO. OF ACRES ASSIGNED
TO THIS WELL

52

18. DISTANCE FROM PROPOSED LOCATION*
TO NEAREST WELL, DRILLING, COMPLETED,
OR APPLIED FOR, ON THIS LEASE, FT.

19. PROPOSED DEPTH

1660'

20. ROTARY OR CABLE TOOLS

Rotary

21. ELEVATIONS (Show whether DF, RT, GR, etc.)

6956 GR

22. APPROX. DATE WORK WILL START*

Upon Approval

23.

PROPOSED CASING AND CEMENTING PROGRAM

SIZE OF HOLE	SIZE OF CASING	WEIGHT PER FOOT	SETTING DEPTH	QUANTITY OF CEMENT
9-7/8"	7-5/8"	26#	60	Sufficient to circulate
6-3/4"	4-1/2"	10.5#	1655	Sufficient to circulate

Above well will be a 1660' South Hospah (Upper Sand) development well. If production is indicated, casing will be set at total depth, well will be perforated and treated as necessary to establish commercial production.



IN ABOVE SPACE DESCRIBE PROPOSED PROGRAM: If proposal is to deepen or plug back, give data on present productive zone and proposed new productive zone. If proposal is to drill or deepen directionally, give pertinent data on subsurface locations and measured and true vertical depths. Give blowout preventer program, if any.

24.

SIGNED

Larry M. Regg

TITLE

District Office Supervisor

DATE

1-7-69

(This space for Federal or State office use)

PERMIT NO.

APPROVAL DATE

APPROVED BY

TITLE

DATE

CONDITIONS OF APPROVAL, IF ANY:

**NEW MEXICO OIL CONSERVATION COMMISSION
WELL LOCATION AND ACERAGE DEDICATION PLAT**

All distances must be from the outer boundaries of the Section

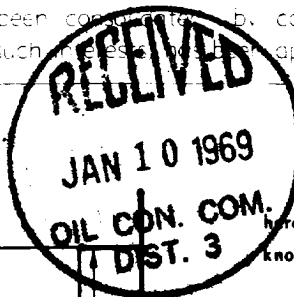
Operator TENNECO OIL COMPANY Well No. 27
 Unit HOSPAN
 Section 12 Township 17 North Range 9 East Meridian Mountain
 Section 1620 Township North Range 330 Meridian East
 Acres 67567 ungraded **Hospah Upper Sand** **Hospah, South (Upper Sand)** **52** Acres

1. Outline the acreage dedicated to the subject well by colored pencil or machine marks on the plat below.
2. If more than one well is dedicated to the well, outline each and identify the ownership thereof, both as to working interest and royalty.
3. If more than one well of different ownership is dedicated to the well, show the interests of all owners, both as to working interest and royalty, for example, unitization, forced pooling, etc.

4. Yes ☐ No ☐ If answer is "yes," type of consolidation _____

If answer is "no," list the owners and tract descriptions which have actually consolidated. (Use reverse side of this form if necessary.)

Not allowable will be an order to the well until all interests have been consolidated by communitization, unitization, forced pooling, or otherwise, or until a non-stakeout unit, eliminating such interests, has been approved by the Commission.



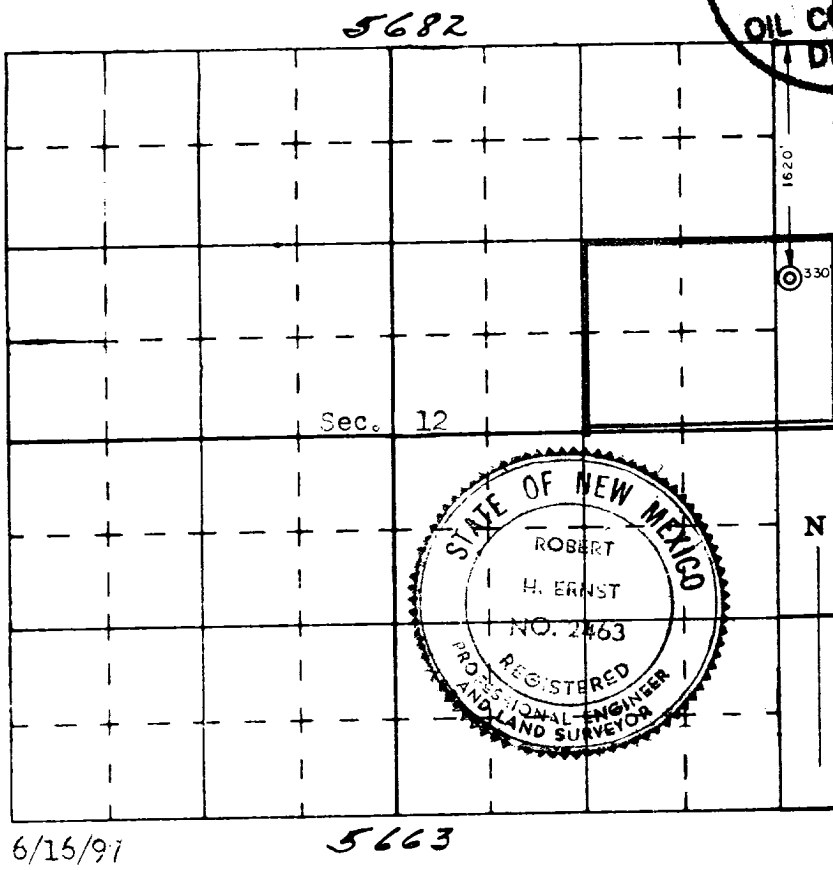
CERTIFICATION

I hereby certify that the information contained herein is true and complete to the best of my knowledge and belief.

Name Larry M. Riggs
 Position District Office Supervisor
 Company Tenneco Oil Company
 Date 1-7-69

I hereby certify that the well location shown on this plat was plotted from field notes of actual surveys made by me or under my supervision, and that the same is true and correct to the best of my knowledge and belief.

Date Surveyed 20 December 1968
Robert H. Ernst
 Registered Professional Engineer
 and/or Land Surveyor
 Robert H. Ernst
 N. Mex. PE & LS 2568
 Certificate No. _____



6/15/97

Ernst Engineering Co.
 Durango, Colorado

