

UNITED STATES
DEPARTMENT OF THE INTERIOR
GEOLOGICAL SURVEY

APPLICATION FOR PERMIT TO DRILL, DEEPEN, OR PLUG BACK

1a. TYPE OF WORK

DRILL ☒DEEPEN ☐PLUG BACK ☐

b. TYPE OF WELL

OIL
WELL ☒GAS
WELL ☐

OTHER

SINGLE
ZONE ☒MULTIPLE
ZONE ☐

2. NAME OF OPERATOR

Tenneco Oil Company

3. ADDRESS OF OPERATOR

Suite 1200 Lincoln Tower Building Denver, Colorado 80203

4. LOCATION OF WELL (Report location clearly and in accordance with any State requirements.)*

At surface

890 FNL & 2710 FEL (NW/4 NE/4)

At proposed prod. zone

14. DISTANCE IN MILES AND DIRECTION FROM NEAREST TOWN OR POST OFFICE*

15. DISTANCE FROM PROPOSED*

LOCATION TO NEAREST
PROPERTY OR LEASE LINE, FT.
(Also to nearest drig. unit line, if any)18. DISTANCE FROM PROPOSED LOCATION*
TO NEAREST WELL, DRILLING, COMPLETED,
OR APPLIED FOR, ON THIS LEASE, FT.

16. NO. OF ACRES IN LEASE

344

19. PROPOSED DEPTH

1650

17. NO. OF ACRES ASSIGNED
TO THIS WELL

40

20. ROTARY OR CABLE TOOLS

Rotary

21. ELEVATIONS (Show whether DF, RT, GR, etc.)

7016 GR

22. APPROX. DATE WORK WILL START*

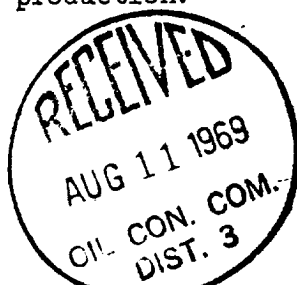
Upon Completion

23.

PROPOSED CASING AND CEMENTING PROGRAM

SIZE OF HOLE	SIZE OF CASING	WEIGHT PER FOOT	SETTING DEPTH	QUANTITY OF CEMENT
13 3/4	10 3/4	32.75#	60	Sufficient to circulate
9 7/8	7	20#	1615	Sufficient to fill 500'

Above well will be a 1619' South Hospah Gallup Sand development well. Casing will set above the Gallup, producing interval will be openhole completed and treated as necessary to establish commercial production.



RECEIVED

AUG 8 1969

U. S. GEOLOGICAL SURVEY
FAIRMINGTON, N. M.

IN ABOVE SPACE DESCRIBE PROPOSED PROGRAM: If proposal is to deepen or plug back, give data on present productive zone and proposed new productive zone. If proposal is to drill or deepen directionally, give pertinent data on subsurface locations and measured and true vertical depths. Give blowout preventer program, if any.

24.

SIGNED

Larry M. Reggs

TITLE

District Office Supervisor

DATE

8-6-69

(This space for Federal or State office use)

PERMIT NO.

APPROVAL DATE

APPROVED BY

SM

TITLE

DATE

CONDITIONS OF APPROVAL, IF ANY:

**NEW MEXICO OIL CONSERVATION COMMISSION
WELL LOCATION AND ACERAGE DEDICATION PLAT**

All distances must be from the outer boundaries of the Section

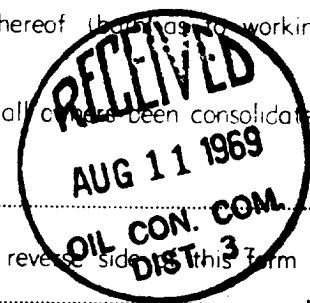
Operator TENNECO OIL COMPANY			Lease HOSPAH		Well No. 36
Unit Letter B	Section 12	Township 17 North	Range 9 West	County McKinley	
Actual Footage Location of Well: 890 feet from the North line and 2710 feet from the East line					
Ground Level Ele. 7016' ungraded	Producing Formation Hospah Lower Sand	Pool Hospah, South (Lower Sand)	Dedicated Acreage: 40		Acres

1. Outline the acreage dedicated to the subject well by colored pencil or hachure marks on the plat below.
2. If more than one lease is dedicated to the well, outline each and identify the ownership thereof (this may be working interest and royalty).
3. If more than one lease of different ownership is dedicated to the well, have the interests of all owners been consolidated by communitization, unitization, force-pooling, etc?

() Yes () No If answer is "yes," type of consolidation _____

If answer is "no," list the owners and tract descriptions which have actually consolidated. (Use reverse side of this form if necessary.) _____

No allowable will be assigned to the well until all interests have been consolidated (by communitization, unitization, forced-pooling, or otherwise) or until a non standard unit, eliminating such interests, has been approved by the Commission.



CERTIFICATION

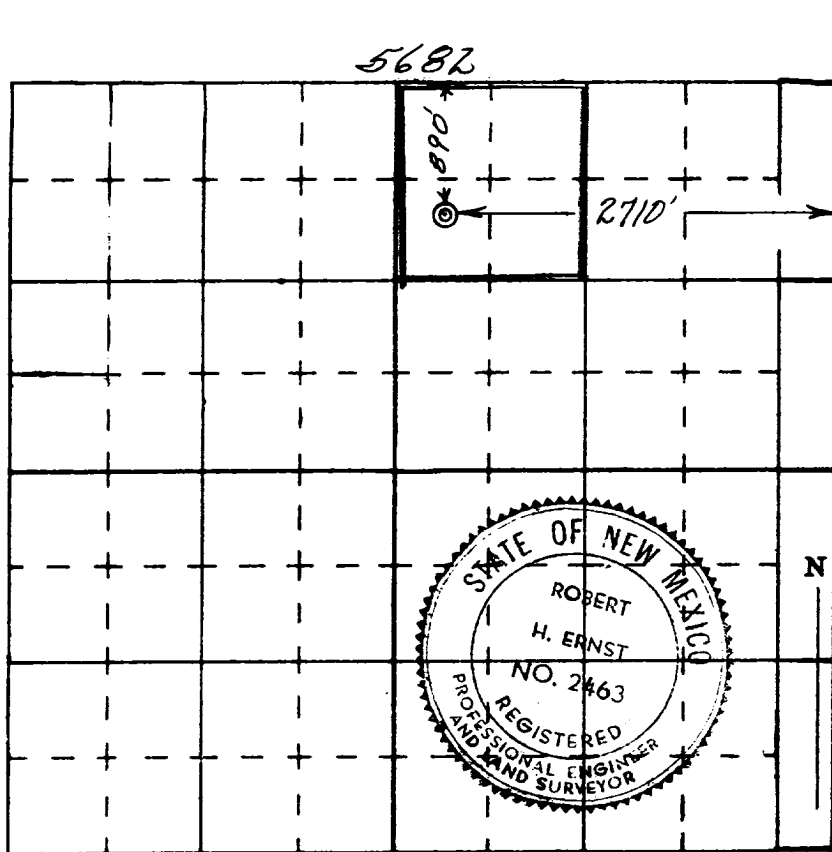
I hereby certify that the information contained herein is true and complete to the best of my knowledge and belief.

Name Larry M. Riggs
 Position District Office Supervisor
 Company Tenneco Oil Company
 Date 8-6-69

I hereby certify that the well location shown on this plat was plotted from field notes of actual surveys made by me or under my supervision, and that the same is true and correct to the best of my knowledge and belief.

Date Surveyed 31 July 1969
Robert H. Ernst
 Registered Professional Engineer
 and/or Land Surveyor
Robert H. Ernst
New Mexico PE & LS 2463

Certificate No. _____



Ernst Engineering Co.
Durango, Colorado