

UNITED STATES  
DEPARTMENT OF THE INTERIOR  
GEOLOGICAL SURVEYAmended ~~42-031-20118~~

## APPLICATION FOR PERMIT TO DRILL, DEEPEN, OR PLUG BACK

## 1a. TYPE OF WORK

DRILL ☐DEEPEN ☐PLUG BACK ☐

## b. TYPE OF WELL

OIL  
WELL ☒GAS  
WELL ☐

OTHER

SINGLE  
ZONE ☒MULTIPLE  
ZONE ☐

## 2. NAME OF OPERATOR

Tenneco Oil Company

## 3. ADDRESS OF OPERATOR

Suite 1200 Lincoln Tower Building, Denver, Colorado 80203

## 4. LOCATION OF WELL (Report location clearly and in accordance with any State requirements.)\*

At surface

900 FNL &amp; 2630 FEL (NW/4 NE/4)

At proposed prod. zone

## 14. DISTANCE IN MILES AND DIRECTION FROM NEAREST TOWN OR POST OFFICE\*

## 15. DISTANCE FROM PROPOSED\*

LOCATION TO NEAREST  
PROPERTY OR LEASE LINE, FT.  
(Also to nearest drlg. unit line, if any)

## 16. NO. OF ACRES IN LEASE

334

17. NO. OF ACRES ASSIGNED  
TO THIS WELL

40

18. DISTANCE FROM PROPOSED LOCATION\*  
TO NEAREST WELL, DRILLING, COMPLETED,  
OR APPLIED FOR, ON THIS LEASE, FT.

## 19. PROPOSED DEPTH

1650

## 20. ROTARY OR CABLE TOOLS

Rotary

## 21. ELEVATIONS (Show whether DF, RT, GR, etc.)

7016 GR

## 22. APPROX. DATE WORK WILL START\*

Upon Completion

## 23.

## PROPOSED CASING AND CEMENTING PROGRAM

SIZE OF HOLE	SIZE OF CASING	WEIGHT PER FOOT	SETTING DEPTH	QUANTITY OF CEMENT
13-3/4	10-3/4	32.75#	60	Sufficient to circulate
9-7/8	7	20#	1615	Sufficient to fill 500'

Above well will be a 1619' South Hospah Gallup Sand development well. Casing will set above the Gallup, producing interval will be openhole completed and treated as necessary to establish commercial production.

Amended to Correct Location Only.

AUG 18 1969

OIL CON. COM.  
DIST. 3

IN ABOVE SPACE DESCRIBE PROPOSED PROGRAM: If proposal is to deepen or plug back, give data on present productive zone and proposed new productive zone. If proposal is to drill or deepen directionally, give pertinent data on subsurface locations and measured and true vertical depths. Give blowout preventer program, if any.

## 24.

SIGNED

*G. A. Ford*

TITLE

Sr. Production Clerk

DATE

8/13/69

(This space for Federal or State office use)

PERMIT NO.

APPROVAL DATE

APPROVED BY

*CA*

TITLE

DATE

CONDITIONS OF APPROVAL, IF ANY:

**NEW MEXICO OIL CONSERVATION COMMISSION  
WELL LOCATION AND ACERAGE DEDICATION PLAT**

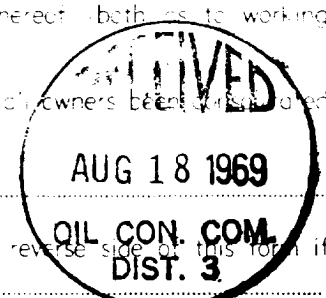
All distances must be from the outer boundaries of the Section

Operator TEENECO OIL COMPANY Lease HOSPAN Well No. 36  
Unit Letter B Section 12 Township 17 North Range 9 West County McKinley  
Approx. Footage Location of Well 900 feet from the North line and 2630 feet from the East line  
Ground Level Elev. \_\_\_\_\_ Producing Formation hospah, South (Lower Sand) Dedicated Avenue 40 Feet  
7012' ungraded hospah Lower Sand

1. Outline the acreage dedicated to the subject well by colored pencil or hatchure marks on the plat below.
2. If more than one lease is dedicated to the well, outline each and identify the ownership thereof (both as to working interest and royalty).
3. If more than one lease of different ownership is dedicated to the well, have the interests of all owners been consolidated by communitization, unitization, forced-pooling, etc?

Yes \_\_\_\_\_ No \_\_\_\_\_ If answer is "yes," type of consolidation \_\_\_\_\_  
If answer is "no," list the owners and tract descriptions which have actually consolidated. (Use reverse side of this form if necessary) \_\_\_\_\_

No allowable will be assigned to the well until all interests have been consolidated (by communitization, unitization, forced-pooling, or otherwise) or until a non standard unit, eliminating such interests, has been approved by the Commission.



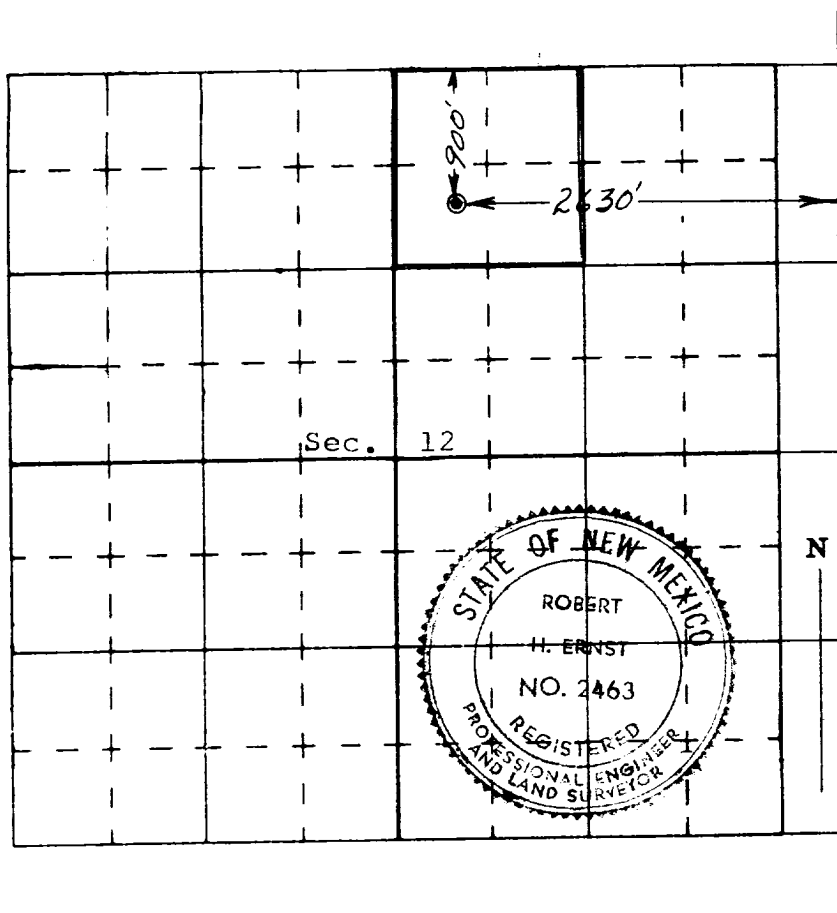
**CERTIFICATION**

I hereby certify that the information contained herein is true and complete to the best of my knowledge and belief.

Name G. A. Ford  
Position Sr. Production Clerk  
Company Tenneco Oil Company  
Date 8/13/69

I hereby certify that the well location shown on this plat was plotted from field notes of actual surveys made by me or under my supervision, and that the same is true and correct to the best of my knowledge and belief.

7 August 1969  
Date Surveyed \_\_\_\_\_  
Registered Professional Engineer and/or Land Surveyor  
Robert H. Ernst  
N. Mex. PE & LS 2463  
Certificate No. \_\_\_\_\_



Ernst Engineering Co.  
Durango, Colorado