

UNITED STATES  
DEPARTMENT OF THE INTERIOR  
GEOLOGICAL SURVEY

Amended 30-031-20120

APPLICATION FOR PERMIT TO DRILL, DEEPEN, OR PLUG BACK

1a. TYPE OF WORK  
 DRILL       DEEPEN       PLUG BACK

b. TYPE OF WELL  
 OIL WELL       GAS WELL       OTHER       SINGLE ZONE       MULTIPLE ZONE

2. NAME OF OPERATOR  
 Tenneco Oil Company

3. ADDRESS OF OPERATOR  
 Suite 1200 Lincoln Tower Building, Denver, Colorado 80203

4. LOCATION OF WELL (Report location clearly and in accordance with any State requirements.)\*  
 At surface  
 410' FNL 1870' FEL (NW/4 NE/4)  
 At proposed prod. zone

14. DISTANCE IN MILES AND DIRECTION FROM NEAREST TOWN OR POST OFFICE\*

5. LEASE DESIGNATION AND SERIAL NO.  
 NM-031208

6. IF INDIAN, ALLOTTEE OR TRIBE NAME

7. UNIT AGREEMENT NAME  
 South Hoshpah Unit

8. FARM OR LEASE NAME

9. WELL NO.  
 29

10. FIELD AND POOL, OR WILDCAT  
 Hoshpah, South (Upper Sand

11. SEC., T., R., M., OR BLK. AND SURVEY OR AREA  
 Sec. 12, T17N, R9W

12. COUNTY OR PARISH      13. STATE  
 McKinley      New Mexico

15. DISTANCE FROM PROPOSED\* LOCATION TO NEAREST PROPERTY OR LEASE LINE, FT. (Also to nearest drlg. unit line, if any)

16. NO. OF ACRES IN LEASE  
 344

17. NO. OF ACRES ASSIGNED TO THIS WELL  
 40

18. DISTANCE FROM PROPOSED LOCATION\* TO NEAREST WELL, DRILLING, COMPLETED, OR APPLIED FOR, ON THIS LEASE, FT.

19. PROPOSED DEPTH  
 1611

20. ROTARY OR CABLE TOOLS  
 Rotary

21. ELEVATIONS (Show whether DF, RT, GR, etc.)  
 7003 GR

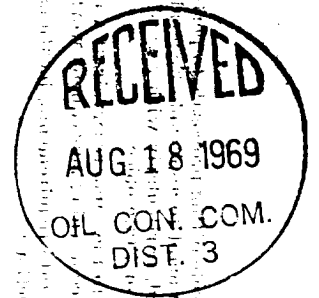
22. APPROX. DATE WORK WILL START\*  
 Upon Approval

23. PROPOSED CASING AND CEMENTING PROGRAM

SIZE OF HOLE	SIZE OF CASING	WEIGHT PER FOOT	SETTING DEPTH	QUANTITY OF CEMENT
12-1/4	8-5/8	24#	60	Sufficient to circulate
7-7/8	5-1/2	15.5#	1611	Sufficient to fill 500' above pay zone

Above well will be a 1611' South Hoshpah Upper Sand well. If production is indicated, casing will be set at total depth, well will be perforated and treated as necessary to establish commercial production.

Amended to correct location only.



IN ABOVE SPACE DESCRIBE PROPOSED PROGRAM: If proposal is to deepen or plug back, give data on present productive zone and proposed new productive zone. If proposal is to drill or deepen directionally, give pertinent data on subsurface locations and measured and true vertical depths. Give blowout preventer program, if any.

24. SIGNED G. A. Ford TITLE Sr. Production Clerk DATE 8/13/69

(This space for Federal or State office use)

PERMIT NO. \_\_\_\_\_ APPROVAL DATE \_\_\_\_\_

APPROVED BY \_\_\_\_\_ TITLE \_\_\_\_\_ DATE \_\_\_\_\_

CONDITIONS OF APPROVAL, IF ANY:

**NEW MEXICO OIL CONSERVATION COMMISSION  
WELL LOCATION AND ACERAGE DEDICATION PLAT**

All distances must be from the outer boundaries of the Section

Operator <b>TENNECO OIL COMPANY</b>		Lease <b>SO. HOSP AH UNIT</b>			Well No. <b>29</b>
Unit Letter <b>B</b>	Section <b>12</b>	Township <b>17 North</b>	Range <b>9 West</b>	County <b>McKinley</b>	
Actual Footage Location of Well:					
<b>410</b> feet from the <b>North</b> line and		<b>1870</b> feet from the <b>East</b> line			
Ground Level Elev. <b>6997' ungraded</b>	Producing Formation <b>Hospah Upper Sand</b>	Foot <b>Hospah, South (Upper Sand)</b>	Dedicated <b>40</b>	Average	Acres

1. Outline the acreage dedicated to the subject well by colored pencil or hachure marks on the plat below.
  2. If more than one lease is dedicated to the well, outline each and identify the ownership thereof (both as to working interest and royalty).
  3. If more than one lease of different ownership is dedicated to the well, have the interests of all owners been consolidated by communitization, unitization, force-pooling, etc?
    - ( ) Yes ( ) No If answer is "yes," type of consolidation: .....
- If answer is "no," list the owners and tract descriptions which have actually consolidated. (Use reverse side of this form if necessary) .....
- No allowable will be assigned to the well until all interests have been consolidated (by communitization, unitization, forced-pooling, or otherwise) or until a non standard unit, eliminating such interests, has been approved by the Commission.

**CERTIFICATION**

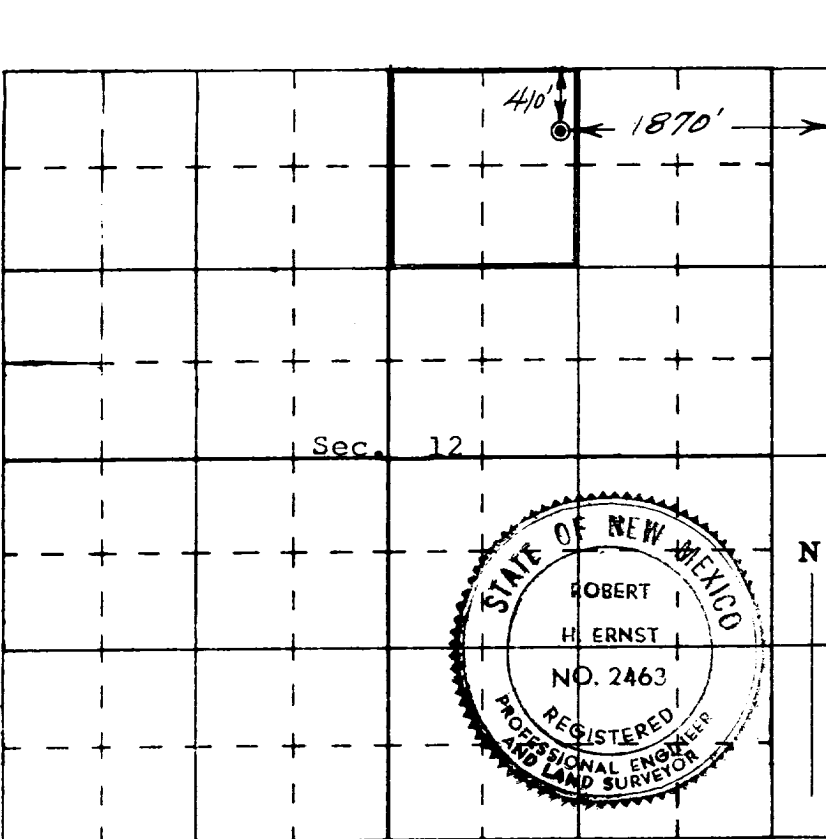
I hereby certify that the information contained herein is true and complete to the best of my knowledge and belief.

*G. A. Ford*  
 Name \_\_\_\_\_  
**G. A. Ford**  
 Position \_\_\_\_\_  
**Sr. Production Clerk**  
 Company \_\_\_\_\_  
**Tenneco Oil Company**  
 Date \_\_\_\_\_  
**8/13/69**

**RECEIVED**  
 AUG 18 1969  
 OIL CON. COM.  
 DIST. 3

I hereby certify that the well location shown on this plat was plotted from field notes of actual surveys made by me or under my supervision, and that the same is true and correct to the best of my knowledge and belief.

**7 August 1969**  
 Date Surveyed \_\_\_\_\_  
*Robert H. Ernst*  
 Registered Professional Engineer  
 and/or Land Surveyor  
**Robert H. Ernst**  
**N. Mex. PE & LS 2463**  
 Certificate No. \_\_\_\_\_



**Ernst Engineering Co.**  
**Durango, Colorado**