

UNITED STATES
DEPARTMENT OF THE INTERIOR
BUREAU OF LAND MANAGEMENT

APPLICATION FOR PERMIT TO DRILL, DEEPEN, OR PLUG BACK

1a. TYPE OF WORK

DRILL ☐

DEEPEN ☒

PLUG BACK ☐

b. TYPE OF WELL

OIL
WELL ☒

GAS
WELL ☐

OTHER

SINGLE
ZONE ☒

MULTIPLE
ZONE ☐

2. NAME OF OPERATOR

Citation Oil & Gas Corp.

3. ADDRESS OF OPERATOR

8223 Willow Place South Ste 250 Houston, TX 77070-5623

4. LOCATION OF WELL (Report location clearly and in accordance with any State requirements.)*

At surface

410' FNL & 1870' FEL NW/4 NE/4

At proposed prod. zone

same

14. DISTANCE IN MILES AND DIRECTION FROM NEAREST TOWN OR POST OFFICE*

15. DISTANCE FROM PROPOSED*

LOCATION TO NEAREST
PROPERTY OR LEASE LINE, FT.
(Also to nearest drlg. unit line, if any)

16. NO. OF ACRES IN LEASE

344

17. NO. OF ACRES ASSIGNED
TO THIS WELL

40

18. DISTANCE FROM PROPOSED LOCATION*
TO NEAREST WELL, DRILLING, COMPLETED,
OR APPLIED FOR, ON THIS LEASE, FT.

19. PROPOSED DEPTH

1625'

20. ROTARY OR CABLE TOOLS

21. ELEVATIONS (Show whether DF, RT, GR, etc.)

7003' GR

22. APPROX. DATE WORK WILL START*

Upon Approval ASAP

23.

PROPOSED CASING AND CEMENTING PROGRAM

SIZE OF HOLE	SIZE OF CASING	WEIGHT PER FOOT	SETTING DEPTH	QUANTITY OF CEMENT
12 1/4	8 5/8	24	75	70 sx
7 7/8	5 1/2	15.5	1606	85 sx

1. MI RU PU. ND WH. RDPU. POOH w/rods, pump & tbq.
2. TIH OE to 1600'. Mix & pump 25 sx cmt plug.
3. RU foaming circulating unit.
4. Drill out plug and csg shoe. Circulate btms up. Drill out formation 6' to top of Lower Hospah. (Est. top @1619') (Est. TD' @ 1625')
5. POOH w/tbg & BHA.
6. Swab test well.
7. RIH w/completion assembly. Load & test well. Place well on production

RECEIVED
AUG 20 1992
OIL CON. DIV.
DIST. 6

92 AUG 13 AM 11:29
BLM

RECEIVED
BLM

IN ABOVE SPACE DESCRIBE PROPOSED PROGRAM: If proposal is to deepen or plug back, give data on present productive zone and proposed new productive zone. If proposal is to drill or deepen directionally, give pertinent data on subsurface location, measured and true vertical depths. Give blowout preventer program, if any.

24.

SIGNED

Sharon E Ward

TITLE

Prod. Reg. Supv.

DATE

8-4-92

(This space for Federal or State office use)

PERMIT NO.

APPROVAL DATE

APPROVED BY

TITLE

APPROVED

CONDITIONS OF APPROVAL, IF ANY:

CE

AUG 14 1992
AREA MANAGER

*See Instructions On Reverse Side

**NEW MEXICO OIL CONSERVATION COMMISSION
WELL LOCATION AND ACERAGE DEDICATION PLAT**

All distances must be from the outer boundaries of the Section

Operator Citation Oil & Gas Corp.			Lease Hospah		Well No. 29
Unit Letter B B	Section 12	Township 17 North	Range 9 West	County McKinley	
Actual Footage Location of Well <div style="display: flex; justify-content: space-between;"> 410 feet from the North line and 1870 feet from the East line </div>					
Ground Level Elev. 6997' ungraded		Producing Formation Hospah Lower		Dedicated Acreage 40	
<div style="display: flex; justify-content: space-between;"> South Hospah Lower South Hospah Lower </div>					

1. Outline the acreage dedicated to the subject well by colored pencil or hatchure marks on the plat below.
2. If more than one lease is dedicated to the well, outline each and identify the ownership thereof both as to working interest and royalty.
3. If more than one lease of different ownership is dedicated to the well, have the interests of all owners been consolidated by communitization, unitization, force-pooling, etc?
 Yes ☐ No ☐ If answer is "yes," type of consolidation _____
 If answer is "no," list the owners and tract descriptions which have actually consolidated. (Use reverse side of this form if necessary) _____
 No allowable will be assigned to the well until all interests have been consolidated (by communitization, unitization, forced-pooling, or otherwise) or until a non standard unit, eliminating such interests, has been approved by the Commission.

RECEIVED
AUG 07 1992

CERTIFICATION

I hereby certify that the information contained herein is true and complete to the best of my knowledge and belief.

Name Sharon Ward
 Position Prod. Reg. Supv.
 Company Citation Oil & Gas Corp.
 Date 8-4-92

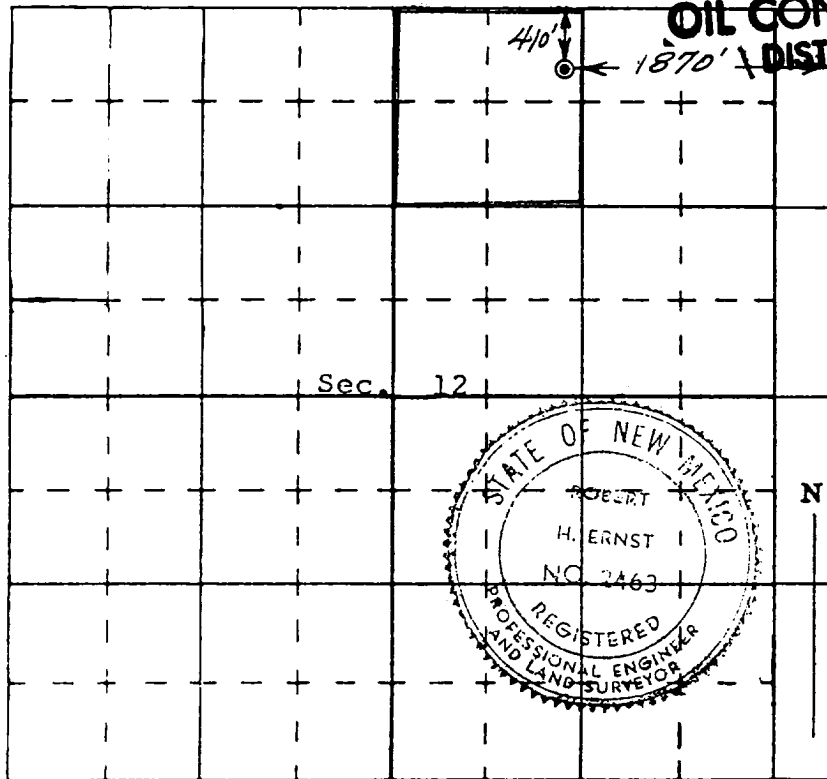
I hereby certify that the well location shown on this plat was plotted from field notes of actual surveys made by me or under my supervision, and that the same is true and correct to the best of my knowledge and belief.

Date Surveyed 7 August 1969

Robert H. Ernst
 Registered Professional Engineer
 and/or Land Surveyor

Robert H. Ernst
N. Mex. PE & LS 2463

Certificate No. _____



Ernst Engineering Co.
Durango, Colorado