

UNITED STATES
DEPARTMENT OF THE INTERIOR
BUREAU OF LAND MANAGEMENT

(Other instructions on
reverse side)

Budget Bureau No. 1004-0136
Expires August 31, 1985

APPLICATION FOR PERMIT TO DRILL, DEEPEN, OR PLUG BACK

1a. TYPE OF WORK

DRILL ☐

PLUG BACK ☐

b. TYPE OF WELL

OIL
WELL ☐

GAS
WELL ☐

OTHER

SINGLE
ZONE ☒

MULTIPLE
ZONE ☐

2. NAME OF OPERATOR

Citation Oil & Gas Corp.

3. ADDRESS OF OPERATOR

8223 Willow Place South Ste 250, Houston, Texas 77070-5623

4. LOCATION OF WELL (Report location clearly and in accordance with any State requirements.)*

At surface

950' FNL & 1980' FEL of Sec. 12, T17N, R9W of Unit B

At proposed prod. zone

Same

14. DISTANCE IN MILES AND DIRECTION FROM NEAREST TOWN OR POST OFFICE*

15. DISTANCE FROM PROPOSED*

LOCATION TO NEAREST
PROPERTY OR LEASE LINE, FT.
(Also to nearest drlg. unit line, if any)

16. NO. OF ACRES IN LEASE

344

18. DISTANCE FROM PROPOSED LOCATION*
TO NEAREST WELL, DRILLING, COMPLETED,
OR APPLIED FOR, ON THIS LEASE, FT.

19. PROPOSED DEPTH

1650'

21. ELEVATIONS (Show whether DF, ET, GR, etc.)

6994' GR This section is subject to technical and
procedural review pursuant to 43 CFR 3165.3

23. PROPOSED CASING AND CEMENTING PROGRAM

SIZE OF HOLE	SIZE OF CASING	WEIGHT PER FOOT	SETTING DEPTH	QUANTITY OF CEMENT
12 1/4"	8 5/8"	24#	71'	70 sacks
7 7/8"	5 1/2"	15.5#	1605'	85 sacks

1. MI RU PU. ND WH. NU BOP. POOH w/rods, pump & tbg.

2. RU foaming circulating unit.

3. Drill out plug & csg shoe. Circulate btms up. Drill out formation to top of
Lower Hospah. (Est. top @ 1625') (Est. TD @ 1650').

4. POOH w/tbg & BHA.

5. Swab test well.

6. RIH w/completion assembly. Load & test well. Place on production.

IN ABOVE SPACE DESCRIBE PROPOSED PROGRAM: If proposal is to deepen or plug back, give data on present productive zone and proposed new productive zone. If proposal is to drill or deepen directionally, give pertinent data on subsurface locations and measured and true vertical depths. Give blowout preventer program, if any.

24.

SIGNED Sharon Ward TITLE Production Regulatory Supv DATE 1-26-93

(This space for permittee's statement)

PERMIT NO.

APPROVED BY

CONDITIONS OF APPROVAL, IF ANY:

MAR 24 1993

OIL CON. DIV.
DIST. 3

APR 8 1993

OIL CON. DIV.
DIST. 3

*See Instructions On Reverse Side

APPROVED
AS AMENDED

MAR 22 1993

DISTRICT MANAGER

Title 18 U.S.C. Section 1001, makes it a crime for any person knowingly and willfully to make to any department or agency of the United States any false, fictitious or fraudulent statements or representations as to any matter within its jurisdiction.

NMOC

DIRECTOR
AS AMENDED
APPROVED

RECEIVED
JAN 10 1964
FBI - NEW YORK

RECEIVED
JAN 10 1964
FBI - NEW YORK

**NEW MEXICO OIL CONSERVATION COMMISSION
WELL LOCATION AND ACERAGE DEDICATION PLAT**

All distances must be from the outer boundaries of the Section

Operator Citation Oil & Gas Corp.			Lease HOSPAH UNIT		Well No. 30
Unit Letter B	Section 12	Township 17 North	Range 9 West	County McKinley	
Actual Footage Location of Well: 950 feet from the North line and 1980 feet from the East line					
Ground Level Elev. 6994' ungraded		Producing Formation Hospah Lower	Pool Hospah, South (Lower)	Dedicated Acreage: 40 Acres	

1. Outline the acreage dedicated to the subject well by colored pencil or hatchure marks on the plat below.
2. If more than one lease is dedicated to the well, outline each and identify the ownership thereof (both as to working interest and royalty).
3. If more than one lease of different ownership is dedicated to the well, have the interests of all owners been consolidated by communization, unitization, force-pooling, etc?

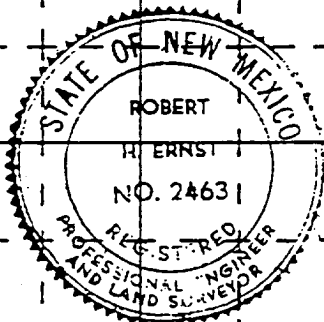
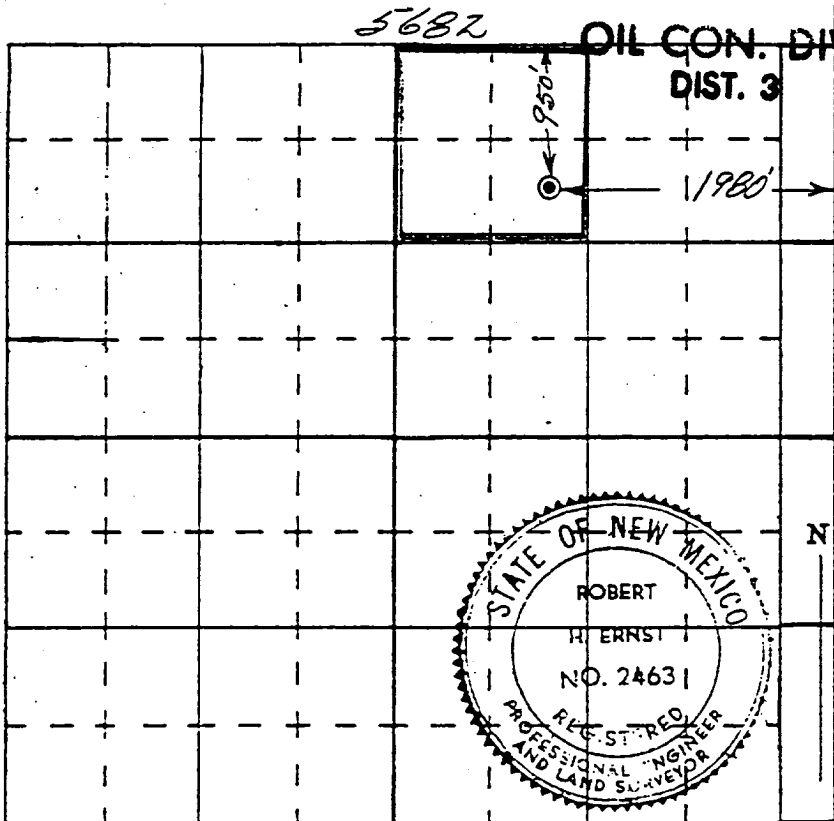
() Yes () No If answer is "yes," type of consolidation _____

If answer is "no," list the owners and tract descriptions which have actually consolidated. (Use reverse side of this form if necessary.) _____

No allowable will be assigned to the well until all interests have been consolidated (by communization, unitization, forced-pooling, or otherwise) or until a non standard unit, eliminating such interests, has been approved by the Commission.

RECEIVED

MAR 24 1993



CERTIFICATION

I hereby certify that the information contained herein is true and complete to the best of my knowledge and belief.

Name Sharon Ward

Position Production Regulatory Supv

Company Citation Oil & Gas Corp.

Date 1-26-93

I hereby certify that the well location shown on this plat was plotted from field notes of actual surveys made by me or under my supervision, and that the same is true and correct to the best of my knowledge and belief.

31 July 1969

Date Surveyed _____
Robert H. Ernst
Registered Professional Engineer
and/or Land Surveyor

Robert H. Ernst
New Mexico PE & LS 2463

Certificate No. _____

Ernst Engineering Co.
Durango, Colorado

RECEIVED

APR 8 1993

OIL CON. DIV
DIST. 2

Submit to Appropriate
District Office
State Lease - 4 copies
Fee Lease - 3 copies

State of New Mexico
Energy, Minerals and Natural Resources Department

Form C-102
Revised 1-1-89

OIL CONSERVATION DIVISION

DISTRICT I
P.O. Box 1980, Hobbs, NM 88240

P.O. Box 2088
Santa Fe, New Mexico 87504-2088

DISTRICT II
P.O. Drawer DD, Artesia, NM 88210

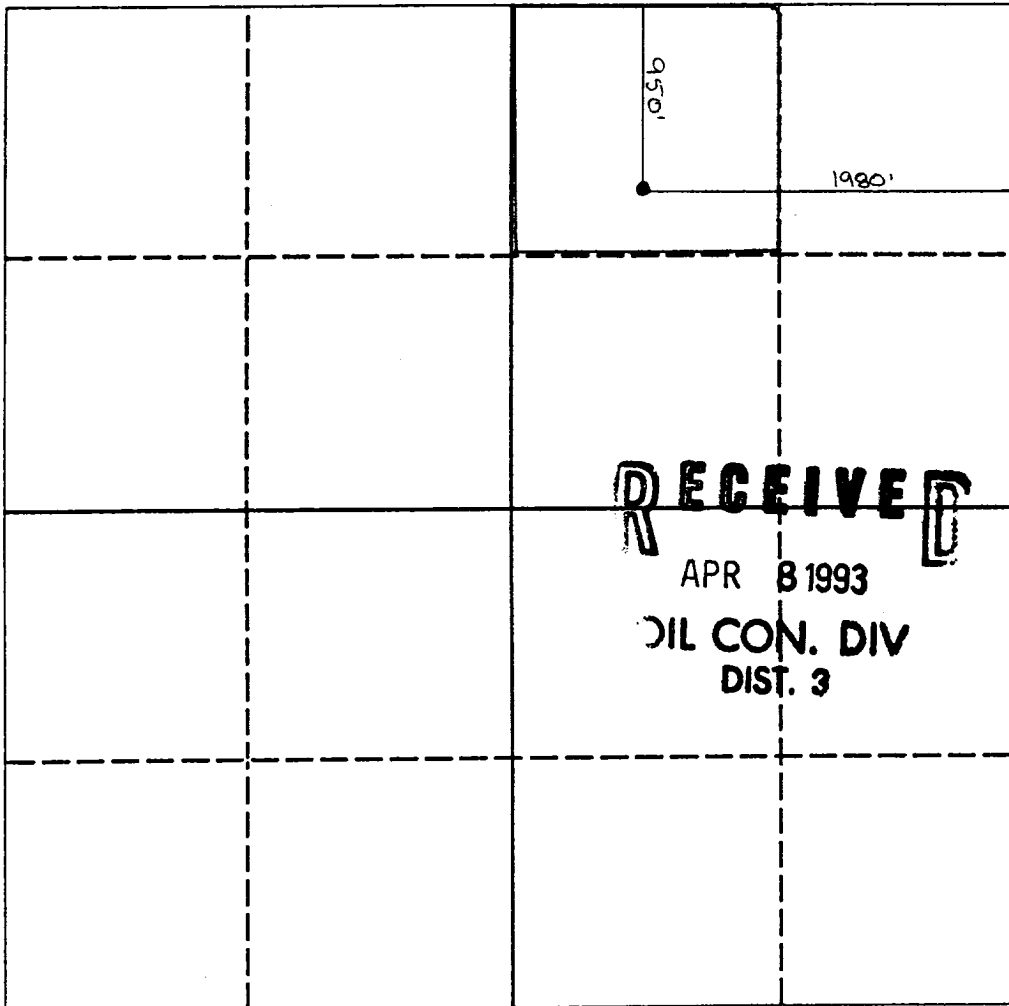
DISTRICT III
1000 Rio Brazos Rd., Aztec, NM 87410

WELL LOCATION AND ACREAGE DEDICATION PLAT

All Distances must be from the outer boundaries of the section

Operator Citation Oil & Gas Corp.			Lease Hospah Unit		Well No. 30
Unit Letter B	Section 12	Township 17North	Range 9 West	County McKinley	
Actual Footage Location of Well: 950 feet from the North line and 1980 feet from the East line					
Ground level Elev. 6994' ungraded		Producing Formation Hospah Lower		Pool Hospah, South (Lower)	
				Dedicated Acreage: 40 Acres	

1. Outline the acreage dedicated to the subject well by colored pencil or hatchure marks on the plat below.
2. If more than one lease is dedicated to the well, outline each and identify the ownership thereof (both as to working interest and royalty).
3. If more than one lease of different ownership is dedicated to the well, have the interest of all owners been consolidated by communitization, unitization, force-pooling, etc.?
☐ Yes ☐ No If answer is "yes" type of consolidation _____
If answer is "no" list the owners and tract descriptions which have actually been consolidated. (Use reverse side of this form if necessary).
No allowable will be assigned to the well until all interests have been consolidated (by communitization, unitization, forced-pooling, or otherwise) or until a non-standard unit, eliminating such interest, has been approved by the Division.



OPERATOR CERTIFICATION

I hereby certify that the information contained herein is true and complete to the best of my knowledge and belief.

Sharon Ward
Signature

Sharon Ward
Printed Name

Production Regulatory Supv
Position

Citation Oil & Gas Corp.
Company

April 5, 1993
Date

SURVEYOR CERTIFICATION

I hereby certify that the well location shown on this plat was plotted from field notes of actual surveys made by me or under my supervision, and that the same is true and correct to the best of my knowledge and belief.

July 31, 1969

Date Surveyed

Robert H. Ernst
Signature & Seal of
Professional Surveyor

NEW MEXICO PE & LS 2463
Certificate No.

