

UNITED STATES  
DEPARTMENT OF THE INTERIOR  
GEOLOGICAL SURVEY

## APPLICATION FOR PERMIT TO DRILL, DEEPEN, OR PLUG BACK

## 1a. TYPE OF WORK

DRILL ☒DEEPEN ☐PLUG BACK ☐

## b. TYPE OF WELL

OIL  
WELL ☒GAS  
WELL ☐

OTHER

SINGLE  
ZONE ☒MULTIPLE  
ZONE ☐

## 2. NAME OF OPERATOR

Tesoro Petroleum Corporation

## 3. ADDRESS OF OPERATOR

8520 Crownhill Boulevard, San Antonio, Texas 78209

## 4. LOCATION OF WELL (Report location clearly and in accordance with any State requirements.\*)

At surface

Unit Letter N

2060' from West Line and 630' from South Line

At proposed prod. zone

Same

## 14. DISTANCE IN MILES AND DIRECTION FROM NEAREST TOWN OR POST OFFICE\*

----

## 15. DISTANCE FROM PROPOSED\*

LOCATION TO NEAREST  
PROPERTY OR LEASE LINE, FT.  
(Also to nearest drlg. unit line, if any)

630'

## 16. NO. OF ACRES IN LEASE

551.94

17. NO. OF ACRES ASSIGNED  
TO THIS WELL

40 acres

18. DISTANCE FROM PROPOSED LOCATION\*  
TO NEAREST WELL, DRILLING, COMPLETED,  
OR APPLIED FOR, ON THIS LEASE, FT.

130'

## 19. PROPOSED DEPTH

1540'

## 20. ROTARY OR CABLE TOOLS

Rotary

## 21. ELEVATIONS (Show whether DF, RT, GR, etc.)

6884' GL

## 22. APPROX. DATE WORK WILL START\*

April 1 - May 1, 1970

## 23.

## PROPOSED CASING AND CEMENTING PROGRAM

SIZE OF HOLE	SIZE OF CASING	WEIGHT PER FOOT	SETTING DEPTH	QUANTITY OF CEMENT
12-1/4"	8-5/8"	24# K-55	60'	50 sacks
7-7/8"	5-1/2"	14# K-55	1500'	60 sacks


Propose to drill to top of Upper Hospah Sand at location shown. Propose setting 8-5/8" surface pipe as shown and 5-1/2" production string in top of producing sand. Will make open hole completion after drilling in with power swivel.

PLEASE NOTE REVISED LOCATION.

IN ABOVE SPACE DESCRIBE PROPOSED PROGRAM: If proposal is to deepen or plug back, give data on present productive zone and proposed new productive zone. If proposal is to drill or deepen directionally, give pertinent data on subsurface locations and measured and true vertical depths. Give blowout preventer program, if any.

## 24.

SIGNED



TITLE

Petroleum Engineer

DATE

April 8, 1970

(This space for Federal or State office use)

PERMIT NO.

APPROVAL DATE

APPROVED BY



TITLE

DATE

CONDITIONS OF APPROVAL, IF ANY:

\*See Instructions On Reverse Side

30-041-20144

5. LEASE DESIGNATION AND SERIAL NO.

NM 052931

6. IF INDIAN, ALLOTTEE OR TRIBE NAME

7. UNIT AGREEMENT NAME

8. FARM OR LEASE NAME

Hanson

9. WELL NO.

16

10. FIELD AND POOL, OR WILDCAT

South Hospah - Upper Sand

11. SEC., T., R., M., OR BLK.  
AND SURVEY OR AREA

Sec. 6, T17N, R8W, NMPM

12. COUNTY OR PARISH

McKinley

13. STATE

New Mexico

NEW MEXICO OIL CONSERVATION COMMISSION  
WELL LOCATION AND ACREAGE DEDICATION PLAT

Form C-102  
Supersedes C-128  
Effective 1-1-65

All distances must be from the outer boundaries of the Section.

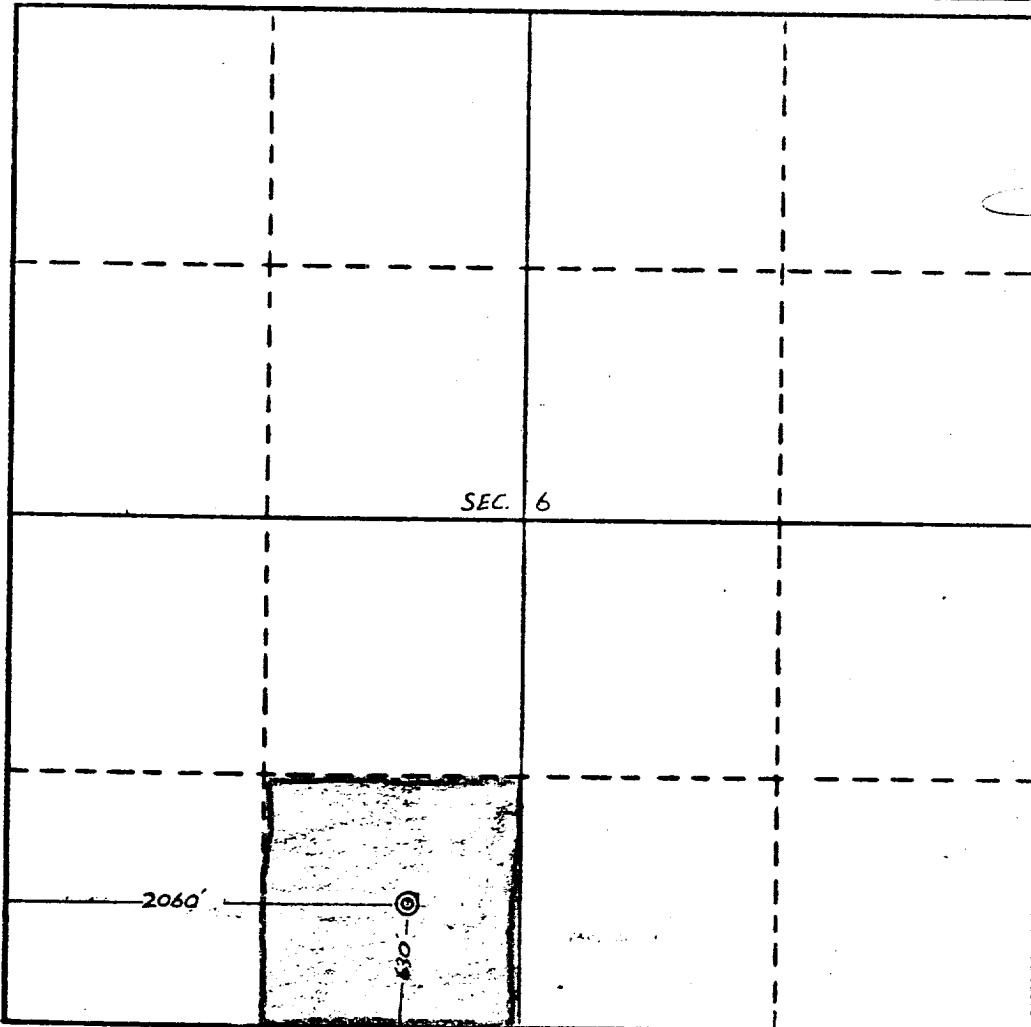
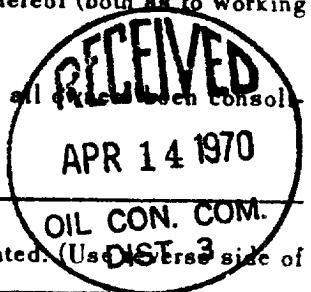
Operator <b>TESORO PETROLEUM CORPORATION</b>		Lease <b>HANSON</b>		Well No. <b>16</b>	
Unit Letter <b>N</b>	Section <b>6</b>	Township <b>17 NORTH</b>	Range <b>8 WEST</b>	County <b>MC KINLEY</b>	
Actual Footage Location of Well: <b>630</b> feet from the <b>SOUTH</b> line and <b>2060</b> feet from the <b>WEST</b> line					
Ground Level Elev. <b>6884</b>	Producing Formation <b>Upper Hospah</b>		Pool <b>South Hospah-Upper Sand</b>	Dedicated Acreage: <b>40</b> Acres	

1. Outline the acreage dedicated to the subject well by colored pencil or hachure marks on the plat below.
2. If more than one lease is dedicated to the well, outline each and identify the ownership thereof (both as to working interest and royalty).
3. If more than one lease of different ownership is dedicated to the well, have the interests of all leases been consolidated by communitization, unitization, force-pooling, etc?

☐ Yes ☐ No If answer is "yes," type of consolidation \_\_\_\_\_

If answer is "no," list the owners and tract descriptions which have actually been consolidated. (Use reverse side of this form if necessary.) \_\_\_\_\_

No allowable will be assigned to the well until all interests have been consolidated (by communitization, unitization, forced-pooling, or otherwise) or until a non-standard unit, eliminating such interests, has been approved by the Commission.



CERTIFICATION

I hereby certify that the information contained herein is true and complete to the best of my knowledge and belief.

Name

**Harold Vagtberg, Jr.**

Position

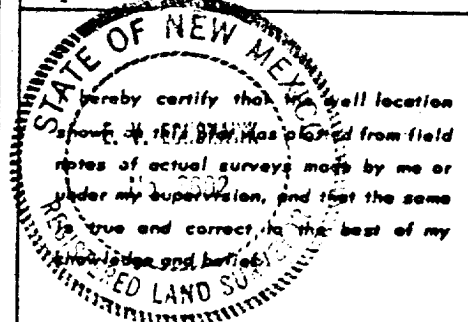
**Vice President**

Company

**Tesoro Petroleum Corporation**

Date

**April 8, 1970**



Date Surveyed

**March JANUARY 22, 1970**

Registered Professional Engineer and/or Land Surveyor

**E. V. Cochran**

Certificate No.

**3602**

0 330 660 990 1320 1650 1980 2310 2640 2970 3300 3630 3960 4290 4620 4950 5280 5610 5940 6270 6600 6930 7260 7590 7920 8250 8580 8910 9240 9570 9900 0