

UNITED STATES  
DEPARTMENT OF THE INTERIOR  
GEOLOGICAL SURVEY

## APPLICATION FOR PERMIT TO DRILL, DEEPEN, OR PLUG BACK

## 1a. TYPE OF WORK

DRILL ☒DEEPEN ☐PLUG BACK ☐

## b. TYPE OF WELL

OIL  
WELL ☒GAS  
WELL ☐

OTHER

SINGLE  
ZONE ☒MULTIPLE  
ZONE ☐

## 2. NAME OF OPERATOR

Tenneco Oil Company

## 3. ADDRESS OF OPERATOR

Suite 1200 Lincoln Tower Bldg. Denver, Colorado

## 4. LOCATION OF WELL (Report location clearly and in accordance with any State requirements.)\*

At surface

660' F/WL &amp; 660' F/NL

At proposed prod. zone

## 14. DISTANCE IN MILES AND DIRECTION FROM NEAREST TOWN OR POST OFFICE\*

## 15. DISTANCE FROM PROPOSED\*

LOCATION TO NEAREST

PROPERTY OR LEASE LINE, FT.

(Also to nearest drlg. unit line, if any)

## 16. NO. OF ACRES IN LEASE

## 18. DISTANCE FROM PROPOSED LOCATION\*

TO NEAREST WELL, DRILLING, COMPLETED,  
OR APPLIED FOR, ON THIS LEASE, FT.

## 19. PROPOSED DEPTH

2900

## 21. ELEVATIONS (Show whether DF, RT, GR, etc.)

6990 GR

## 23.

## PROPOSED CASING AND CEMENTING PROGRAM

SIZE OF HOLE	SIZE OF CASING	WEIGHT PER FOOT	SETTING DEPTH	QUANTITY OF CEMENT
12 - 1"	8 - 5/8	24	60	Sufficient to Circulate
7 - 7/8"	5 - 1/2	15.5	2900	Suff. to Cover 500' Above Upper Hospah Sand.

Above well to be a 2900' undesignated Dakota well. Well will be logged and if commercial production is indicated, casing will be run to T.D., perforated and formation treated as necessary to establish commercial production.

B.O.P. to be tested each 24 hours.



CONFIDENTIAL

~~CONFIDENTIAL~~ 3/22/71

RECEIVED

SEP 24 1970

U. S. GEOLOGICAL SURVEY  
FARMINGTON, N. M.

IN ABOVE SPACE DESCRIBE PROPOSED PROGRAM: If proposal is to deepen or plug back, give data on present productive zone and proposed new productive zone. If proposal is to drill or deepen directionally, give pertinent data on subsurface locations and measured and true vertical depths. Give blowout preventer program, if any.

## 24.

SIGNED

TITLE Sr. Production Clerk

DATE 9/22/70

(This space for Federal or State office use)

PERMIT NO.

APPROVAL DATE

APPROVED BY

TITLE

DATE

CONDITIONS OF APPROVAL, IF ANY:

**NEW MEXICO OIL CONSERVATION COMMISSION  
WELL LOCATION AND ACERAGE DEDICATION PLAT**

All distances must be from the outer boundaries of the Section

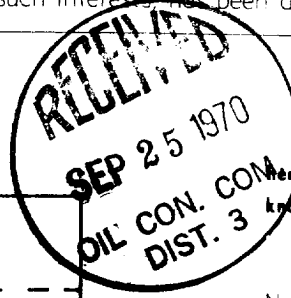
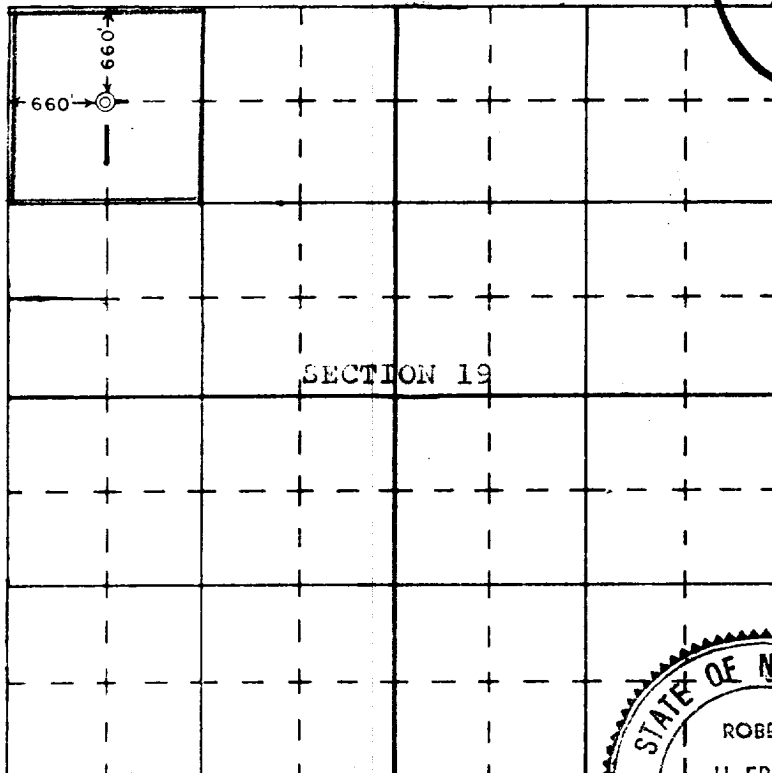
Operator <b>TENNECO OIL COMPANY</b>			Lease <del>NE</del> <b>-LONE PINE USA</b>		Well No. <b>1</b>
Unit Letter <b>D</b>	Section <b>19</b>	Township <b>17 North</b>	Range <b>8 West</b>	County <b>McKinley County</b>	

Actual Footage Location of Well:  
**660** feet from the **North** line and **660** feet from the **West** line  
 Ground Level Elev. **6990' ungraded** Producing Formation **Dakota** Pool **Undesignated Dakota** Dedicated Average **40** Acres

1. Outline the acreage dedicated to the subject well by colored pencil or hatchure marks on the plat below.
2. If more than one lease is dedicated to the well, outline each and identify the ownership thereof (both as to working interest and royalty, if).
3. If more than one lease of different ownership is dedicated to the well, have the interests of all owners been consolidated (by communitization, unitization, force-pooling, etc)?  
 Yes ☐ No ☐ If answer is "yes," type of consolidation \_\_\_\_\_

If answer is "no," list the owners and tract descriptions which have actually consolidated. (Use reverse side of this form if necessary.) \_\_\_\_\_

No allowable will be assigned to the well until all interests have been consolidated (by communitization, unitization, forced-pooling, or otherwise) or until a non standard unit, eliminating such interests, has been approved by the Commission.



**CERTIFICATION**

I hereby certify that the information contained herein is true and complete to the best of my knowledge and belief.

Name **G. A. Ford**  
 Position **Sr. Production Clerk**  
 Company **Tenneco Oil Company**  
 Date **9/22/70**

I hereby certify that the well location shown on this plat was plotted from field notes of actual surveys made by me or under my supervision, and that the same is true and correct to the best of my knowledge and belief.

**14 September 1970**  
 Date Surveyed  
**Robert H. Ernst**  
 Registered Professional Engineer  
 and/or Land Surveyor  
**Robert H. Ernst**  
**New Mexico PE & LS 2463**  
 Certificate No. \_\_\_\_\_

**Ernst Engineering Co.**  
**Durango, Colorado 81301**

