

UNITED STATES
DEPARTMENT OF THE INTERIOR
GEOLOGICAL SURVEY

APPLICATION FOR PERMIT TO DRILL, DEEPEN, OR PLUG BACK

1a. TYPE OF WORK

DRILL ☒DEEPEN ☐PLUG BACK ☐

b. TYPE OF WELL

OIL
WELL ☒GAS
WELL ☐OTHER ☐SINGLE
ZONE ☐MULTIPLE
ZONE ☐

2. NAME OF OPERATOR

Tenneco Oil Company

3. ADDRESS OF OPERATOR

Suite 1200 Lincoln Tower Building, Denver, Colorado 80203

4. LOCATION OF WELL (Report location clearly and in accordance with any State requirements.)*

At surface

2970' F/NL and 890' F/EL

At proposed prod. zone

14. DISTANCE IN MILES AND DIRECTION FROM NEAREST TOWN OR POST OFFICE*

MAR 11 1971

16. DISTANCE FROM PROPOSED*

LOCATION TO NEAREST

PROPERTY OR LEASE LINE, FT.

(Also to nearest dirg. unit line, if any)

18. DISTANCE FROM PROPOSED LOCATION*

TO NEAREST WELL, DRILLING, COMPLETED,

OR APPLIED FOR, ON THIS LEASE, FT.

16. NO. OF ACRES IN LEASE

1600 COM.

19. PROPOSED DEPTH

3000'

17. NO. OF ACRES ASSIGNED
TO THIS WELL

40

20. ROTARY OR CABLE TOOLS

Rotary

21. ELEVATIONS (Show whether DF, RT, GR, etc.)

6953.0 GR

22. APPROX. DATE WORK WILL START*

23.

PROPOSED CASING AND CEMENTING PROGRAM

SIZE OF HOLE	SIZE OF CASING	WEIGHT PER FOOT	SETTING DEPTH	QUANTITY OF CEMENT
12-1/4	8-5/8	24#	60	Suff. to circulate
7-7/8"	5-1/2	15.5	3000	Suff. to cover 500' above Upper Hospah Sand

Above well will be a 3000' development well. Well will be logged and, if commercial production is indicated, casing will be run to T.D., perforated and treated as necessary to establish commercial production.

OPERATIONS BY:

☒ RECORD LESSER☐ D. OF O. ON FILE☐ D. OF O. ATTACHED

BOND COVERAGE:

☐ SECTOR WITH LINE☐ SECTOR ON FILE☐ LEASE'S BOND - WIDE☐ OPERATOR'S BOND - WIDE

RECEIVED

FEB 19 1971

U. S. GEOLOGICAL SURVEY
FARMINGTON, N. M.

IN ABOVE SPACE DESCRIBE PROPOSED PROGRAM: If proposal is to deepen or plug back, give data on present productive zone and proposed new productive zone. If proposal is to drill or deepen directionally, give pertinent data on subsurface locations and measured and true vertical depths. Give blowout preventer program, if any.

24.

SIGNED

R. H. Ritchie

TITLE

District Office Supervisor

DATE

2-17-71

(This space for Federal or State office use)

PERMIT NO.

APPROVAL DATE

APPROVED *Con*

CONDITIONS OF APPROVAL, IF ANY:

TITLE

DATE

FEB 16 1971

P. T. McGRATH

*See Instructions On Reverse Side

**NEW MEXICO OIL CONSERVATION COMMISSION
WELL LOCATION AND ACERAGE DEDICATION PLAT**

All distances must be from the outer boundaries of the Section

Operator TENNECO OIL COMPANY		Range KAGOSO		Well No. 2	
Unit Letter I	Section 18	Township 17 NORTH	Range 8 WEST	County Mc KINLEY	
Actual Footage Location of Well:					
2970 feet from the NORTH		890 feet from the EAST			
Ground Level Elev. 6953.0	Producing Formation Dakota	Pool Lone Pine Dakota "D"	Dedicated Acreage 40 Acres		

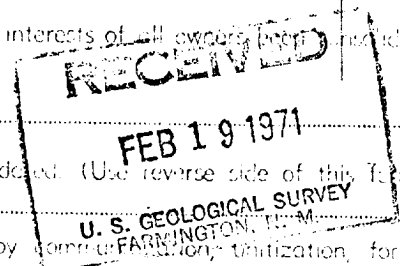
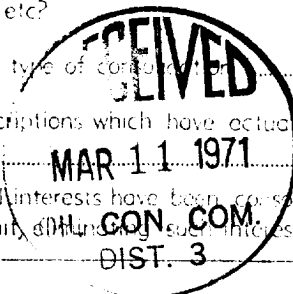
1. Outline the acreage dedicated to the subject well by colored pencil or hatchure marks on the plat below.
2. If more than one lease is dedicated to the well, outline each and identify the ownership thereof (both as to working interest and royalty).
3. If more than one lease of different ownership is dedicated to the well, have the interests of all owners properly indicated by communization, unitization, force-pooling, etc?

() Yes () No

If answer is "yes," type of consolidation:

If answer is "no," list the owners and tract descriptions which have actually consolidated. (Use reverse side of this form if necessary.)

No allowable will be assigned to the well until all interests have been consolidated (by communization, unitization, force-pooling, or otherwise) or until a non standard unit, including such interests, has been approved by the Commission.



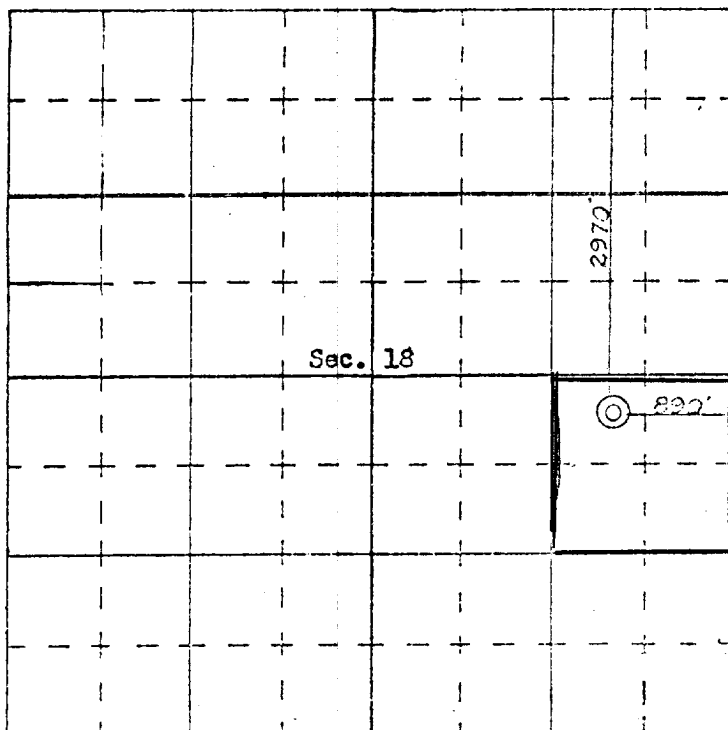
CERTIFICATION

I hereby certify that the information contained herein is true and complete to the best of my knowledge and belief.

Name *R. H. Ritchie*
R. H. Ritchie
 Position **District Office Supervisor**
 Company **Tenneco Oil Company**
 Date **February 17, 1971**

I hereby certify that the well location shown on this plat was plotted from field notes of actual surveys made by me or under my supervision, and that the same is true and correct to the best of my knowledge and belief.

Date **13 February, 1971**
 Signature *James P. Leese*
 Title **Professional Engineer and/or Land Surveyor**
JAMES P. LEESE
1463
 Certificate No. _____



N

SCALE—1 INCHES EQUALS 1 MILE