

**NEW MEXICO OIL CONSERVATION COMMISSION  
WELL LOCATION AND ACERAGE DEDICATION PLAT**

All distances must be from the outer boundaries of the Section

Operator <b>TENNECO OIL COMPANY</b>			Lease <b>S.F.P.R.R.</b>		Well No. <b>16</b>
Unit Letter <b>F</b>	Section <b>24</b>	Township <b>17 NORTH</b>	Range <b>9 WEST</b>	County <b>McKINLEY</b>	
Actual Footage Location of Well. <b>1650</b> feet from the <b>NORTH</b>			<b>1650</b> feet from the <b>WEST</b>		
Ground Level Elev. <b>7104.0</b>	Producing Formation <b>Dakota</b>		Pool <b>Lone Pine Dakota "D"</b>	Dedicated Acreage <b>80</b>	Acres

1. Outline the acreage dedicated to the subject well by colored pencil or hatchure marks on the plat below.
2. If more than one lease is dedicated to the well, outline each and identify the ownership thereon (including working interest and royalty).
3. If more than one lease of different ownership is dedicated to the well, have the interests of all been consolidated by communitization, unitization, force-pooling, etc?

( ) Yes ( ) No If answer is "yes," type of consolidation \_\_\_\_\_

If answer is "no," list the owners and tract descriptions which have actually consolidated. (Use reverse side of this form if necessary.) \_\_\_\_\_

No allowable will be assigned to the well until all interests have been consolidated (by communitization, unitization, force-pooling, or otherwise) or until a non standard unit, eliminating such interests, has been approved by the Commission.



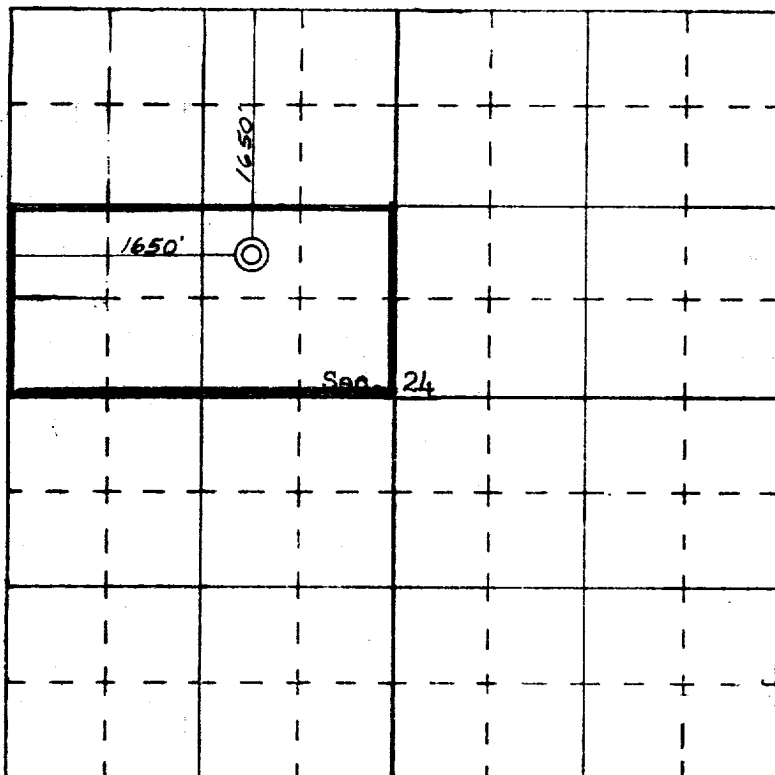
**CERTIFICATION**

I hereby certify that the information contained herein is true and complete to the best of my knowledge and belief.

Name \_\_\_\_\_  
**G. A. Ford**  
 Position \_\_\_\_\_  
**Sr. Production Clerk**  
 Company \_\_\_\_\_  
**Tenneco Oil Company**  
 Date \_\_\_\_\_  
**4/16/71**

I hereby certify that the well location shown on this plat was plotted from field notes of actual surveys made by me or under my supervision, and that the same is true and correct to the best of my knowledge and belief.

**14 April, 1971**  
 Date Surveyed \_\_\_\_\_  
  
 Registered Professional Engineer  
 and/or Land Surveyor  
**JAMES P. LEESE**  
**1463**  
 Certificate No. \_\_\_\_\_



N  
|

SCALE—4 INCHES EQUALS 1 MILE

SAN JUAN ENGINEERING COMPANY, FARMINGTON, N. M.