

| | |
|------------------------|---|
| NO. OF COPIES RECEIVED | 5 |
| DISTRIBUTION | |
| SANTA FE | 1 |
| FILE | 1 |
| U.S.G.S. | 2 |
| LAND OFFICE | |
| OPERATOR | 1 |

NEW MEXICO OIL CONSERVATION COMMISSION

Form C-101 30-031-20239
Revised 1-1-65

| | |
|--------------------------------|---|
| 5A. Indicate Type of Lease | |
| STATE <input type="checkbox"/> | FEE <input checked="" type="checkbox"/> |

5. State Oil & Gas Lease No.

APPLICATION FOR PERMIT TO DRILL, DEEPEN, OR PLUG BACK

| | | | |
|--|--|---|--|
| 1a. Type of Work | | 7. Unit Agreement Name | |
| b. Type of Well OIL WELL <input type="checkbox"/> GAS WELL <input type="checkbox"/> OTHER <input type="checkbox"/> | | 8. Farm or Lease Name MONUMENT | |
| 2. Name of Operator DAVIS OIL COMPANY | | 9. Well No. #1 | |
| 3. Address of Operator 1230 Denver Club Building - Denver, Colorado 80202 | | 10. Field and Pool, or Wildcat Wildcat | |
| 4. Location of Well UNIT LETTER A LOCATED 650 FEET FROM THE North LINE AND 625 FEET FROM THE East LINE OF SEC. 33 TWP. 20N RGE. 10W NMPM | | 12. County McKinley | |
| 19. Proposed Depth 3800' | | 19A. Formation Morrison | |
| 20. Rotary or C.T. Rotary | | 21. Elevations (Show whether DE, RI, etc.) 6394 GR | |
| 21A. Kind & Status Plug. Bond Blanket Bond | | 21B. Drilling Contractor Unknown | |
| 22. Approx. Date Work will start Rig Availability | | | |

23.

PROPOSED CASING AND CEMENT PROGRAM

| SIZE OF HOLE | SIZE OF CASING | WEIGHT PER FOOT | SETTING DEPTH | SACKS OF CEMENT | EST. TOP |
|---|----------------|-----------------|---------------|-----------------|----------|
| 12 1/4" | 8 5/8" | 24# | 60' | cmd. to surf. | |
| If oil string is run, it will be 5 1/2" thru producing zone, cemented to displace 600'. | | | | | |

LOGGING: Induction Electrical Survey and BHC Formation Density log with Gamma Ray from base of surface casing to total depth. BHC Sonic log with Caliper over the Dakota formation.

MUD PROGRAM: Fresh water native mud which will be converted to a 10 cc water loss or less chemical base mud for drilling the Dakota.

Good oil field practice will be used in determining the necessity of coring and/or drill stem testing any shows of oil or gas encountered.

APPROVAL VALID
FOR 90 DAYS UNLESS
DRILLING COMMENCED,

EXPIRES 6-28-72



IN ABOVE SPACE DESCRIBE PROPOSED PROGRAM: IF PROPOSAL IS TO DEEPEN OR PLUG BACK, GIVE DATA ON PRESENT PRODUCTIVE ZONE AND PROPOSED NEW PRODUCTIVE ZONE. GIVE BLOWOUT PREVENTER PROGRAM, IF ANY.

I hereby certify that the information above is true and complete to the best of my knowledge and belief.

Signed William B. Bryan Title Geological Assistant Date 3-28-72

(This space for State Use)

APPROVED BY Ernest C. Cleveland TITLE Sup. Dist. III DATE 3-30-72

CONDITIONS OF APPROVAL, IF ANY:

NEW MEXICO OIL CONSERVATION COMMISSION

WELL LOCATION AND ACERAGE DEDICATION PLAT

All distances must be from the outer boundaries of the Section

| | | | | | |
|--|--|-----------------------------|---------------------------------------|----------------------------|----------------------|
| Operator DAVIS OIL COMPANY | | | Lease MONUMENT | | Well No. 1 |
| Unit Letter A | Section 33 | Township 20 NORTH | Range 10 WEST | County Mc KINLEY | |
| Actual Footage Location of Well: <div style="display: flex; justify-content: space-between;"> 650 feet from the NORTH line and 625 feet from the EAST line </div> | | | | | |
| Ground Level Elev. 6394.0 | Producing Formation CRETACEOUS | Pool WILDCAT | Dedicated Acreage: 40 Acres | | |

1. Outline the acreage dedicated to the subject well by colored pencil or hatchure marks on the plat below.
 2. If more than one lease is dedicated to the well, outline each and identify the ownership thereof (both operating interest and royalty).
 3. If more than one lease of different ownership is dedicated to the well, have the interests of all owners been consolidated by communitization, unitization, force-pooling, etc?
- () Yes () No If answer is "yes," type of consolidation _____
- If answer is "no," list the owners and tract descriptions which have actually consolidated. (Use reverse side of this form if necessary.) _____
- No allowable will be assigned to the well until all interests have been consolidated (by communitization, unitization, forced-pooling, or otherwise) or until a non standard unit, eliminating such interests, has been approved by the Commission.

FILED
MAR 30 1972
OIL CON. COM.
DIST. 3

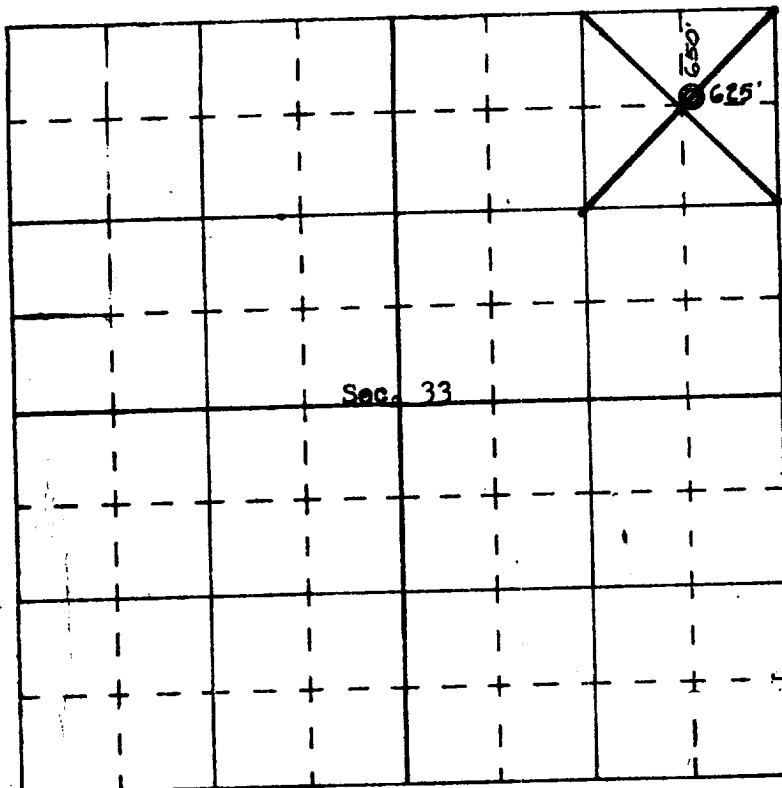
CERTIFICATION

I hereby certify that the information contained herein is true and complete to the best of my knowledge and belief.

SHELIA BERGAMO
 Name
Geological Assistant
 Position
DAVIS OIL COMPANY
 Company
3-28-72
 Date
Shelia Bergamo

I hereby certify that the well location shown on this plat was plotted from field notes of actual surveys made by me or under my supervision, and that the same is true and correct to the best of my knowledge and belief.

11 March, 1972
 Date Surveyed
James P. Leese
 Registered Professional Engineer
 and/or Land Surveyor
JAMES P. LEESE
3163
 Certificate No.



SCALE—4 INCHES EQUALS 1 MILE

SAN JUAN ENGINEERING COMPANY, FARMINGTON, N. M.