

UNITED STATES
DEPARTMENT OF THE INTERIOR
GEOLOGICAL SURVEY

APPLICATION FOR PERMIT TO DRILL, DEEPEN, OR PLUG BACK

12. TYPE OF WORK

DRILL ☒DEEPEN ☐PLUG BACK ☐

13. TYPE OF WELL

OIL
WELL ☒GAS
WELL ☐

OTHER

SINGLE
ZONE ☒MULTIPLE
ZONE ☐

2. NAME OF OPERATOR

TENNECO OIL COMPANY

3. ADDRESS OF OPERATOR

Suite 1200 Lincoln Tower Bldg-Denver, Colo.

4. LOCATION OF WELL (Report location clearly and in accordance with any State requirements.)*

At surface

2290' F/EL and 1825' F/NL

At proposed prod. zone

14. DISTANCE IN MILES AND DIRECTION FROM NEAREST TOWN OR POST OFFICE*

15. DISTANCE FROM PROPOSED*

LOCATION TO NEAREST
PROPERTY OR LEASE LINE, FT.
(Also to nearest Crig. unit line, if any)

16. NO. OF ACRES IN LEASE

17. NO. OF ACRES ASSIGNED
TO THIS WELL

80

18. DISTANCE FROM PROPOSED LOCATION*
TO NEAREST WELL, DRILLING, COMPLETED,
OR APPLIED FOR, ON THIS LEASE, FT.

19. PROPOSED DEPTH

2900

20. ROTARY OR CABLE TOOLS

Rotary

21. ELEVATIONS (Show whether DF, RT, GR, etc.)

7027 GR

22. APPROX. DATE WORK WILL START*

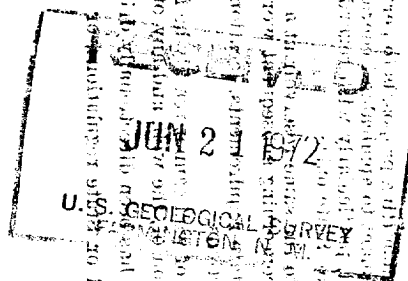
23.

PROPOSED CASING AND CEMENTING PROGRAM

SIZE OF HOLE	SIZE OF CASING	WEIGHT PER FOOT	SETTING DEPTH	QUANTITY OF CEMENT
12-1/4	8-5/8"	24	60	circulate to surface
7-7/8	5-1/2"	15.5	2900	suff. to fill 500' above shallowest pay zone.

Well will be drilled to approximate T. D. of 2900' logged, and if commercial production is indicated, casing will be run to T. D., perforated, and formation treated as necessary to establish commercial production. B. O. P. to be tested each 24 hours.

(Unit Letter G)



IN ABOVE SPACE DESCRIBE PROPOSED PROGRAM: If proposal is to deepen or plug back, give data on present productive zone and proposed new productive zone. If proposal is to drill or deepen directionally, give pertinent data on subsurface locations and measured and true vertical depths. Give blowout prevention program, if any.

24.

SIGNED

G.A. Ford

TITLE Sr. Production Clerk

DATE

6/19/72

(This space for Federal or State office use)

PERMIT NO.

APPROVAL DATE

APPROVED BY

TITLE

DATE

CONDITIONS OF APPROVAL, IF ANY:

OK

*See Instructions On Reverse Side

NEW MEXICO OIL CONSERVATION COMMISSION

WELL LOCATION AND ACERAGE DEDICATION PLAT

All distances must be from the outer boundaries of the Section

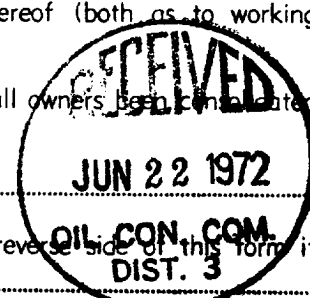
Operator TENNECO OIL COMPANY			Lease LILLIE		Well No. 1
Unit Letter G	Section 8	Township 17 NORTH	Range 8 WEST	County Mc KINLEY	
Actual Footage Location of Well: 1825 feet from the NORTH line and 2290 feet from the EAST line					
Ground Level Elev. 7027.0	Producing Formation Dakota		Pool Lone Pine Dakota "D"	Dedicated Acreage: 80 Acres	

1. Outline the acreage dedicated to the subject well by colored pencil or hachure marks on the plat below.
2. If more than one lease is dedicated to the well, outline each and identify the ownership thereof (both as to working interest and royalty),
3. If more than one lease of different ownership is dedicated to the well, have the interests of all owners been consolidated by communitization, unitization, force-pooling, etc?

() Yes () No If answer is "yes," type of consolidation

If answer is "no," list the owners and tract descriptions which have actually consolidated. (Use reverse side of this form if necessary.)

No allowable will be assigned to the well until all interests have been consolidated (by communitization, unitization, forced-pooling, or otherwise) or until a non standard unit, eliminating such interests, has been approved by the Commission.



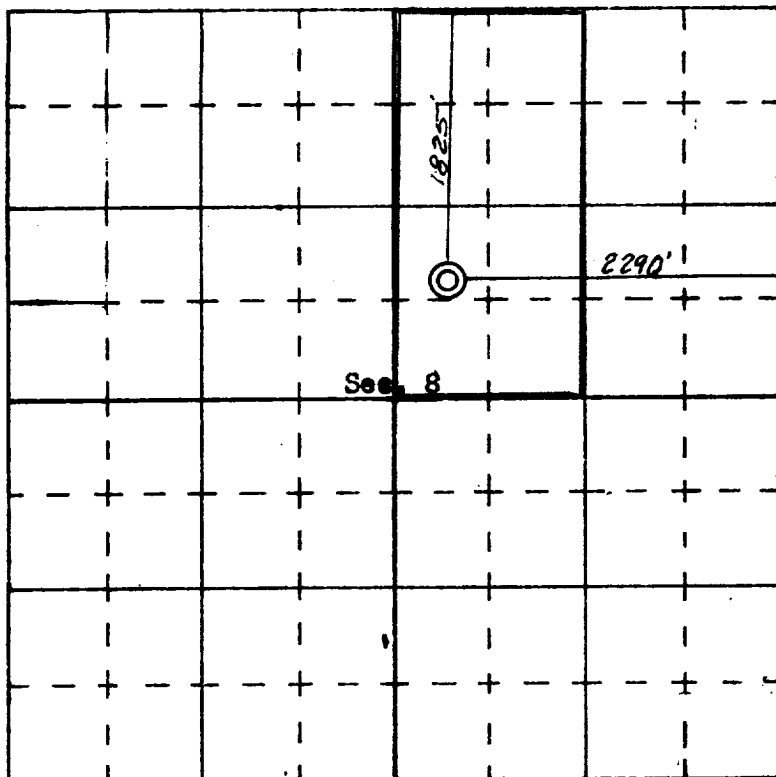
CERTIFICATION

I hereby certify that the information contained herein is true and complete to the best of my knowledge and belief.

Name G. A. Ford
 Position Production Clerk
 Company Tenneco Oil Company
 Date 6/6/72

I hereby certify that the well location shown on this plat was plotted from field notes of actual surveys made by me or under my supervision, and that the same is true and correct to the best of my knowledge and belief.

Date Surveyed 25 May 1972
 Registered Professional Engineer and/or Land Surveyor
JAMES P. LEESE
 1443
 Certificate No. JAMES P. LEESE



SCALE—4 INCHES EQUALS 1 MILE

SAN JUAN ENGINEERING COMPANY, FARMINGTON, N. M.