

UNITED STATES
DEPARTMENT OF THE INTERIOR
GEOLOGICAL SURVEY

30-031-20288

5. LEASE DESIGNATION AND SERIAL NO.

14-20-0603-9534

6. IF INDIAN, ALLOTTEE OR TRIBE NAME

7. UNIT AGREEMENT NAME

Lone Pine Dakota "D" Unit

8. FARM OR LEASE NAME

9. WELL NO.

29

10. FIELD AND POOL, OR WILDCAT

Lone Pine Dakota "D"

11. SEC., T., R., M., OR BLK.
AND SURVEY OR AREA

Sec. 8, R-8-W, T-17-N

12. COUNTY OR PARISH

McKinley

13. STATE

New Mexico

APPLICATION FOR PERMIT TO DRILL, DEEPEN, OR PLUG BACK

1a. TYPE OF WORK

DRILL ☒DEEPEN ☐PLUG BACK ☐

b. TYPE OF WELL

OIL
WELL ☒GAS
WELL ☐

OTHER

SINGLE
ZONE ☒MULTIPLE
ZONE ☐

2. NAME OF OPERATOR

Tenneco Oil Company

3. ADDRESS OF OPERATOR

Suite 1200 - Lincoln Tower Bldg., Denver, Colorado

4. LOCATION OF WELL (Report location clearly and in accordance with any State requirements.*)

At surface

1450' F/WL and 2300' F/SL

At proposed prod. zone

14. DISTANCE IN MILES AND DIRECTION FROM NEAREST TOWN OR POST OFFICE*

15. DISTANCE FROM PROPOSED*

LOCATION TO NEAREST
PROPERTY OR LEASE LINE, FT.
(Also to nearest drlg. unit line, if any)

16. NO. OF ACRES IN LEASE

2,598

17. NO. OF ACRES ASSIGNED
TO THIS WELL

80

18. DISTANCE FROM PROPOSED LOCATION*
TO NEAREST WELL, DRILLING, COMPLETED,
OR APPLIED FOR, ON THIS LEASE, FT.

19. PROPOSED DEPTH

2,880

20. ROTARY OR CABLE TOOLS

Rotary

21. ELEVATIONS (Show whether DF, RT, CR, etc.)

7045 GR (est.)

22. APPROX. DATE WORK WILL START*

upon approval

23. PROPOSED CASING AND CEMENTING PROGRAM

SIZE OF HOLE	SIZE OF CASING	WEIGHT PER FOOT	SETTING DEPTH	QUANTITY OF CEMENT
12-1/4"	8-5/8	24#	80	Sufficient to circulate
7-7/8"	5-1/2	15.5#	2880	Sufficient to fill
				500' above producing zone

Well to be drilled to approximate T. D. of 2880', logged, and if commercial production is indicated, casing will be run to TD, perforated and formation treated as necessary to establish commercial production.

NOTE: Certified plats to follow.
NMOCC Order No. R-4263



IN ABOVE SPACE DESCRIBE PROPOSED PROGRAM: If proposal is to deepen or plug back, give data on present productive zone and proposed new productive zone. If proposal is to drill or deepen directionally, give pertinent data on subsurface locations and measured and true vertical depths. Give blowout preventer program, if any.

24.

SIGNED

TITLE

Sr. Prod. Clerk

DATE

10/26/72

(This space for Federal or State office use)

PERMIT NO.

APPROVAL DATE

APPROVED BY

70

TITLE

DATE

CONDITIONS OF APPROVAL, IF ANY:

NEW MEXICO OIL CONSERVATION COMMISSION

WELL LOCATION AND ACERAGE DEDICATION PLAT

All distances must be from the outer boundaries of the Section

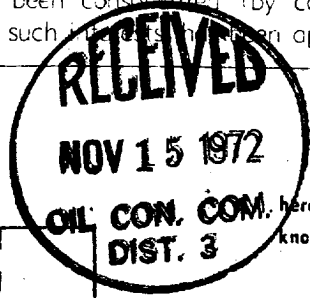
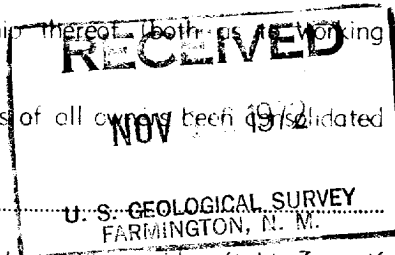
Operator TENNECO OIL COMPANY		Lease LONE PINE UNIT		Well No. 29
Unit Letter K	Section 8	Township 17 NORTH	Range 8 WEST	County McKINLEY
Actual Footage Location of Well: 2300 feet from the SOUTH line 1450 feet from the WEST line				
Ground Level Elev. 7038	Producing Formation Dakota "D"	Pool Lone Pine Dakota "D"	Dedicated Acreage 80 Acres	

1. Outline the acreage dedicated to the subject well by colored pencil or hatchure marks on the plat below.
2. If more than one lease is dedicated to the well, outline each and identify the ownership thereof (both as to working interest and royalty).
3. If more than one lease of different ownership is dedicated to the well, have the interests of all owners been consolidated by communitization, unitization, force-pooling, etc?

() Yes () No If answer is "yes," type of consolidation _____

If answer is "no," list the owners and tract descriptions which have actually consolidated. (Use reverse side of this form if necessary) _____

No allowable will be assigned to the well until all interests have been consolidated (by communitization, unitization, forced-pooling, or otherwise) or until a non standard unit, eliminating such interests, has been approved by the Commission.

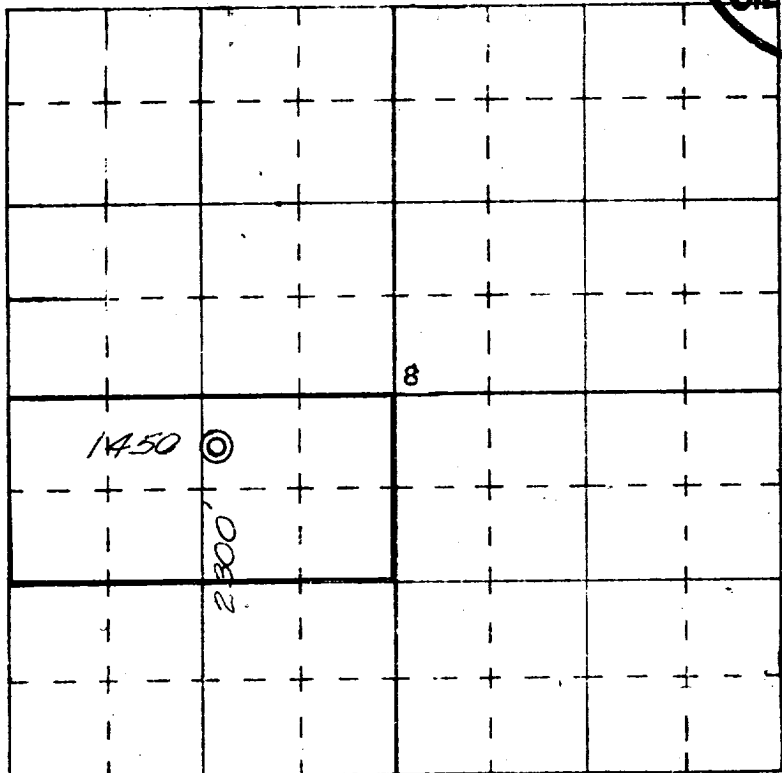
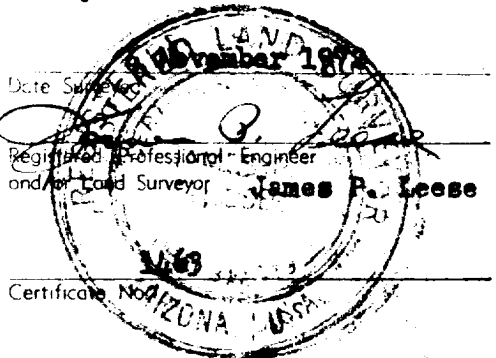


CERTIFICATION

I hereby certify that the information contained herein is true and complete to the best of my knowledge and belief.

W L Shaver
 Name
W. L. Shaver
 Position
Sr. Production Clerk
 Company
Tenneco Oil Company
 Date
11/8/72

I hereby certify that the well location shown on this plat was plotted from field notes of actual surveys made by me or under my supervision, and that the same is true and correct to the best of my knowledge and belief.



N

SCALE—4 INCHES EQUALS 1 MILE