

UNITED STATES
DEPARTMENT OF THE INTERIOR
GEOLOGICAL SURVEY

30-031-20299

5. LEASE DESIGNATION AND SERIAL NO.

NM 8270

6. IF INDIAN, ALLOTTEE OR TRIBE NAME

7. UNIT AGREEMENT NAME

FARM OR LEASE NAME

9. WELL NO.

55

10. FIELD AND POOL, OR WILDCAT

South Hospah Upper Sand

11. SEC., T., R., M., OR BLK.
AND SURVEY OR AREA

Sec. 12, T17N, R9W

12. COUNTY OR PARISH

13. STATE

McKinley

New Mexico

1a. TYPE OF WORK

DRILL ☒DEEPEN ☐PLUG BACK ☐

b. TYPE OF WELL

OIL
WELL ☒GAS
WELL ☐

OTHER

SINGLE
ZONE ☐MULTIPLE
ZONE ☐

2. NAME OF OPERATOR

Tenneco Oil Company

3. ADDRESS OF OPERATOR

Suite 1200 Lincoln Tower Bldg., Denver, Colo. 80203

4. LOCATION OF WELL (Report location clearly and in accordance with any State requirements.*)

At surface

1550' FEL and 1750' FNL

At proposed prod. zone

14. DISTANCE IN MILES AND DIRECTION FROM NEAREST TOWN OR POST OFFICE*

15. DISTANCE FROM PROPOSED*

LOCATION TO NEAREST

PROPERTY OR LEASE LINE, FT.

(Also to nearest drlg. unit line, if any)

16. NO. OF ACRES IN LEASE

596

17. NO. OF ACRES ASSIGNED
TO THIS WELL

51.96

18. DISTANCE FROM PROPOSED LOCATION*

TO NEAREST WELL, DRILLING, COMPLETED,
OR APPLIED FOR, ON THIS LEASE, FT.

19. PROPOSED DEPTH

1586'

20. ROTARY OR CABLE TOOLS

Rotary

21. ELEVATIONS (Show whether DF, RT, GR, etc.)

6967 GR

22. APPROX. DATE WORK WILL START*

Upon Approval

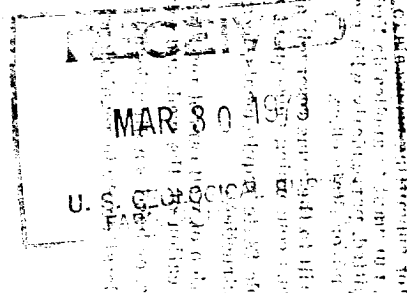
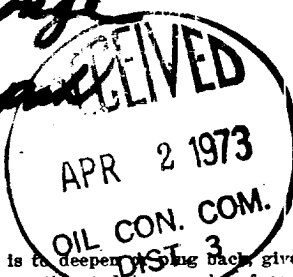
23.

PROPOSED CASING AND CEMENTING PROGRAM

SIZE OF HOLE	SIZE OF CASING	WEIGHT PER FOOT	SETTING DEPTH	QUANTITY OF CEMENT
12-1/4"	9-5/8"	36#	100'	Sufficient to Circulate
8-3/4"	7"	20#	1586'	Sufficient to bring cement 900' from surface.

Drill 12 1/4" surface hole, run 9-5/8", 36#, K-55 casing and cement to surface. Drill out with 8-3/4" hole to approximate TD of 1586' KDB, log, and if commercial production is indicated run 7" 20# K-55 casing to TD and cement as required. Perforate casing and treat formation if necessary to establish commercial production. B. O. P. to be tested each 24 hours.

Lease Name Change
From: Upper Hospah



IN ABOVE SPACE DESCRIBE PROPOSED PROGRAM: If proposal is to deepen or plug back, give data on present productive zone and proposed new productive zone. If proposal is to drill or deepen directionally, give pertinent data on subsurface locations and measured and true vertical depths. Give blowout preventer program, if any.

24.

SIGNED

TITLE Sr. Production Clerk

DATE 3/27/73

(This space for Federal or State office use)

PERMIT NO.

APPROVAL DATE

APPROVED BY

TITLE

DATE

CONDITIONS OF APPROVAL, IF ANY:

**NEW MEXICO OIL CONSERVATION COMMISSION
WELL LOCATION AND ACERAGE DEDICATION PLAT**

All distances must be from the outer boundaries of the Section

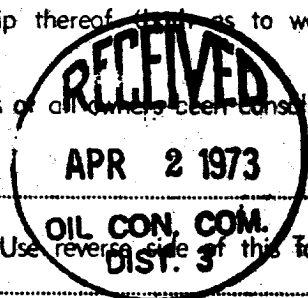
Operator TENNECO OIL COMPANY		Lease SOUTH HOSPah		Well No. 55
Unit Letter 8 H	Section 12	Township 17 NORTH	Range 9 WEST	County McKINLEY
Actual Footage Location of Well: 1750 feet from the NORTH line and 1550 feet from the EAST line				
Ground Level Elev. 6967	Producing Formation Upper Hospah	Pool South Hospah Upper Sand	Dedicated Acreage: 51.96 Acres	

1. Outline the acreage dedicated to the subject well by colored pencil or hatchure marks on the plat below.
2. If more than one lease is dedicated to the well, outline each and identify the ownership thereof (that as to working interest and royalty),
3. If more than one lease of different ownership is dedicated to the well, have the interests of all owners been consolidated by communitization, unitization, force-pooling, etc?

() Yes () No If answer is "yes," type of consolidation

If answer is "no," list the owners and tract descriptions which have actually consolidated. (Use reverse side of this form if necessary.)

No allowable will be assigned to the well until all interests have been consolidated (by communitization, unitization, forced-pooling, or otherwise) or until a non standard unit, eliminating such interests, has been approved by the Commission.



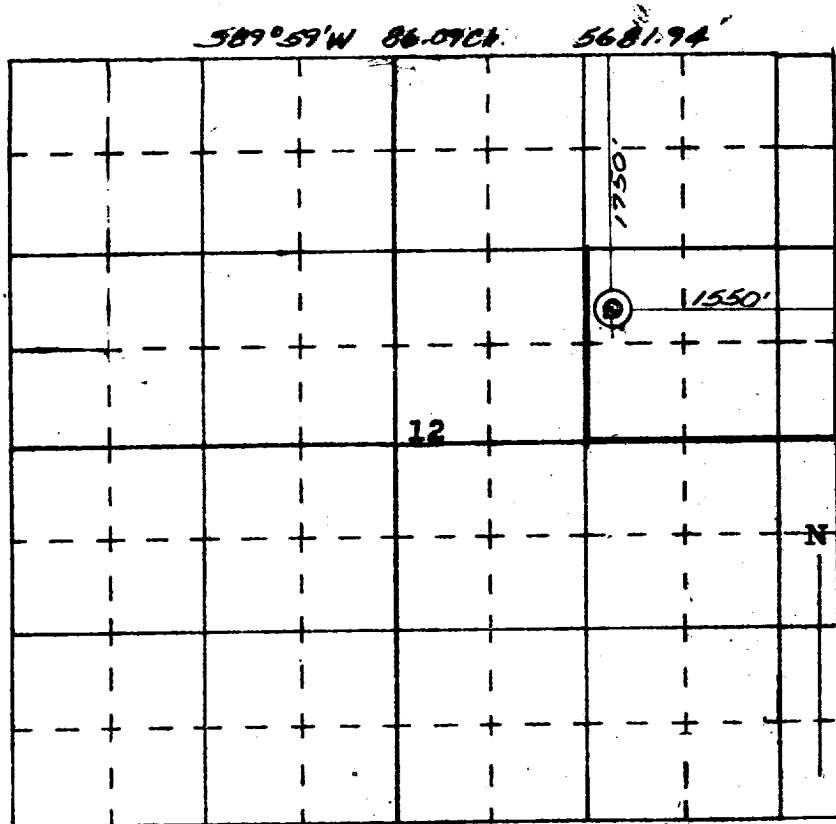
CERTIFICATION

I hereby certify that the information contained herein is true and complete to the best of my knowledge and belief.

Carley Watkins
 Name _____
 Position **Sr. Production Clerk**
 Company **Tenneco Oil Company**
 Date **3/27/73**

I hereby certify that the well location shown on this plat was plotted from field notes of actual surveys made by me or under my supervision, and that the same is true and correct to the best of my knowledge and belief.

Date Surveyed **17**
 Registered Professional Engineer and/or Surveyor **4681**
JAMES A. LEE
 Certificate No. _____



SCALE 4 INCHES EQUALS 1 MILE **05.00 Ch. West 5662.00'**