

UNITED STATES
DEPARTMENT OF THE INTERIOR
GEOLOGICAL SURVEY

30-031-20300

APPLICATION FOR PERMIT TO DRILL, DEEPEN, OR PLUG BACK

1a. TYPE OF WORK

DRILL ☒DEEPEN ☐PLUG BACK ☐

b. TYPE OF WELL

OIL
WELL ☐GAS
WELL ☐

OTHER

SINGLE
ZONE ☐MULTIPLE
ZONE ☐

2. NAME OF OPERATOR

TENNECO OIL COMPANY

3. ADDRESS OF OPERATOR

Suite 1200 Lincoln Tower Bldg. Denver, Colorado 80203

4. LOCATION OF WELL (Report location clearly and in accordance with any State requirements.*)

At surface

1100' FNL and 1275' FEL

At proposed prod. zone

14. DISTANCE IN MILES AND DIRECTION FROM NEAREST TOWN OR POST OFFICE*

15. DISTANCE FROM PROPOSED*

LOCATION TO NEAREST
PROPERTY OR LEASE LINE, FT.
(Also to nearest drig. unit line, if any)

18. DISTANCE FROM PROPOSED LOCATION*

TO NEAREST WELL, DRILLING, COMPLETED,
OR APPLIED FOR, ON THIS LEASE, FT.

16. NO. OF ACRES IN LEASE

596

19. PROPOSED DEPTH

1580'

17. NO. OF ACRES ASSIGNED

TO THIS WELL
52.12

20. ROTARY OR CABLE TOOLS

Rotary

21. ELEVATIONS (Show whether DF, RT, GR, etc.)

6954 GR

22. APPROX. DATE WORK WILL START*

23.

PROPOSED DRILLING AND CEMENTING PROGRAM

SIZE OF HOLE	SIZE OF CASING	WEIGHT PER FOOT	SETTING DEPTH	QUANTITY OF CEMENT
12-1/4"	9-5/8"	36#	100'	Sufficient to circulate
8-3/4"	7"	20#	1580'	Sufficient to bring cement 900 from surface.

Drill 12-1/4" surface hole, run 9-5/8" 36#, K-55 casing and cement to surface.
Drill out with 8-3/4" hole to approximate T.D. of 1580' KDB, Log and if commercial
production is indicated run 7" casing to T.D. and cement as required. Perforate
casing and treat formation if necessary to establish commercial production.
B.O.P. to be tested each 24 hours.

Lease Name *Chinle*
From: *Upper Hesperia Unit*

RECEIVED
APR 2 1973
OIL CON. COM.
DIST. 3

MAR 30 1973
U. S. GEOLOGICAL SURVEY

IN ABOVE SPACE DESCRIBE PROPOSED PROGRAM: If proposal is to deepen or plug back, give data on present productive zone and proposed new productive zone. If proposal is to drill or deepen directionally, give pertinent data on subsurface locations and measured and true vertical depths. Give blowout preventer program, if any.

24.

SIGNED

Carley Hatten

TITLE Sr. Production Clerk

DATE 3/27/73

(This space for Federal or State office use)

PERMIT NO.

APPROVAL DATE

APPROVED BY

GA

TITLE

DATE

CONDITIONS OF APPROVAL, IF ANY:

*See Instructions On Reverse Side

**NEW MEXICO OIL CONSERVATION COMMISSION
WELL LOCATION AND ACERAGE DEDICATION PLAT**

All distances must be from the outer boundaries of the Section

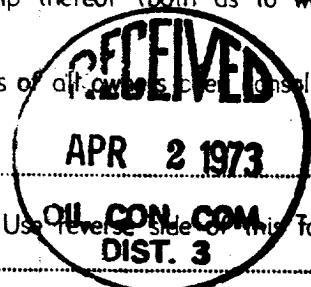
Operator TENNECO OIL COMPANY		Lease South HOSPAH Unit		Well No 56
Unit Letter A	Section 12	Township 17 NORTH	Range 9 WEST	County McKINLEY
Actual Footage Location of Well: 1100 feet from the NORTH line and 1275 feet from the EAST line				
Ground Level Elev 6954	Producing Formation UPPER HOSPAH	Pool SOUTH HOSPAH UPPER SAND	Dedicated Acreage: 52.12	Acres

1. Outline the acreage dedicated to the subject well by colored pencil or hachure marks on the plat below.
2. If more than one lease is dedicated to the well, outline each and identify the ownership thereof (both as to working interest and royalty),
3. If more than one lease of different ownership is dedicated to the well, have the interests of all owners been consolidated by communitization, unitization, force-pooling, etc?

() Yes () No If answer is "yes," type of consolidation

If answer is "no," list the owners and tract descriptions which have actually consolidated. (Use reverse side of this form if necessary.)

No allowable will be assigned to the well until all interests have been consolidated (by communitization, unitization, forced-pooling, or otherwise) or until a non standard unit, eliminating such interests, has been approved by the Commission.



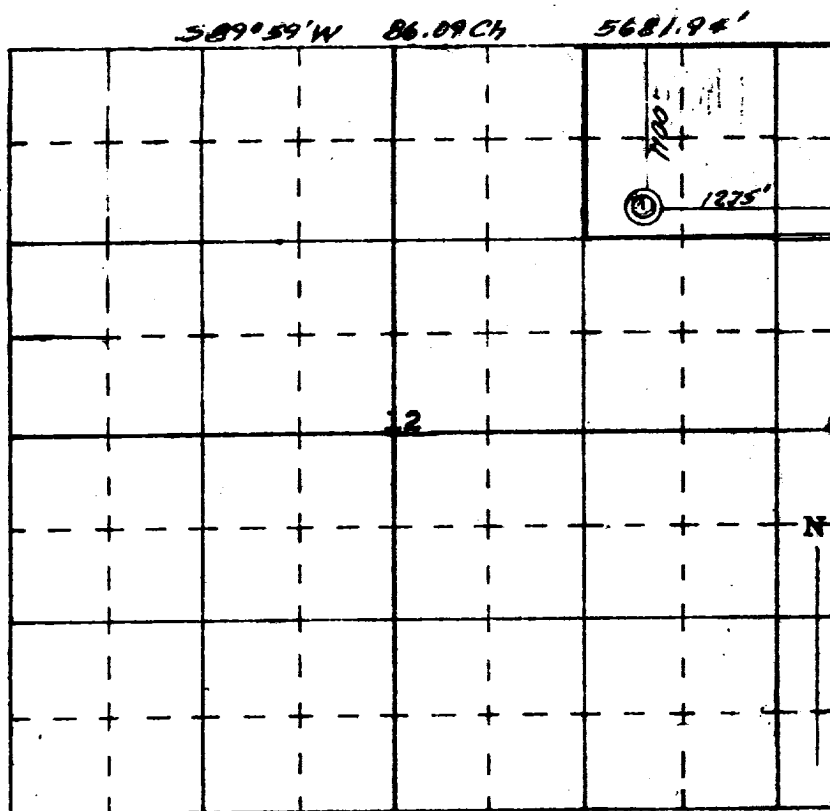
CERTIFICATION

I hereby certify that the information contained herein is true and complete to the best of my knowledge and belief.

Carley Watkins
Name
Carley Watkins
Position
Sr. Production Clerk
Company
TENNECO OIL COMPANY
Date
3.27/73

I hereby certify that the well location shown on this plat was plotted from field notes of actual surveys made by me or under my supervision, and that the same is true and correct to the best of my knowledge and belief.

17
Date Surveyed
James P. Leese
Registered Professional Engineer
and/or State Surveyor
NEW MEXICO
Certificate No. 4185



SCALE—4 INCHES EQUALS 1 MILE

85.80 Ch. West 5662.80'