

UNITED STATES  
DEPARTMENT OF THE INTERIOR  
GEOLOGICAL SURVEY

## APPLICATION FOR PERMIT TO DRILL, DEEPEN, OR PLUG BACK

## 1a. TYPE OF WORK

DRILL ☒DEEPEN ☐PLUG BACK ☐

## b. TYPE OF WELL

OIL  
WELL ☒GAS  
WELL ☐OTHER ☐SINGLE  
ZONE ☐MULTIPLE  
ZONE ☐

## 2. NAME OF OPERATOR

J. F. MADDOX

## 3. ADDRESS OF OPERATOR

P.O. Box 1320, Hobbs, New Mexico 88240

## 4. LOCATION OF WELL (Report location clearly and in accordance with any State requirements.)

At surface

1980' FNL and 660' FEL of Section

At proposed prod. zone

Same

## 14. DISTANCE IN MILES AND DIRECTION FROM NEAREST TOWN OR POST OFFICE\*

4 miles West of Crown Point

## 15. DISTANCE FROM PROPOSED\*

LOCATION TO NEAREST

PROPERTY OR LEASE LINE, FT.

(Also to nearest drlg. line, if any)

660'

## 16. NO. OF ACRES IN LEASE

160.0

17. NO. OF ACRES ASSIGNED  
TO THIS WELL

80 40

18. DISTANCE FROM PROPOSED LOCATION\*  
TO NEAREST WELL, DRILLING, COMPLETED,  
OR APPLIED FOR, ON THIS LEASE, FT.

----

## 19. PROPOSED DEPTH

2000'

## 20. ROTARY OR CABLE TOOLS

Rotary

## 21. ELEVATIONS (Show whether DF, RT, GR, etc.)

6972 GR

## 22. APPROX. DATE WORK WILL START\*

August 15, 1971

## 23.

## PROPOSED CASING AND CEMENTING PROGRAM

SIZE OF HOLE	SIZE OF CASING	WEIGHT PER FOOT	SETTING DEPTH	QUANTITY OF CEMENT
12 1/4"	8 5/8"	24#	60'	Circulate
7 7/8"	5 1/2"	15.5#	2000'	145 sx (Bottom 1000')

Plan to drill 12 1/4" hole to approx. 60' and set 8 5/8" - 24# casing. Will drill out from under 8 5/8" casing with 7 7/8" hole to a T.D. of approx. 2000' to test for oil and gas. Plans are to core the "A" sand in the Dakota and run drill stem tests over potentially commercial zones from surface to T.D. IES, GRD and BHC. Sonic logs will be run from T.D. to surface. If well proves to be productive, will run 5 1/2" - 15.5# casing to productive zone and complete.

IN ABOVE SPACE DESCRIBE PROPOSED PROGRAM: If proposal is to deepen or plug back, give data on present productive zone and proposed new productive zone. If proposal is to drill or deepen directionally, give pertinent data on subsurface locations and measured and true vertical depths. Give blowout preventer program, if any.

## 24.

SIGNED

TITLE

Owner

DATE

August 4, 1971

(This space for Federal or State office use)

PERMIT NO.

APPROVAL DATE

APPROVED BY

TITLE

DATE

CONDITIONS OF APPROVAL, IF ANY:

NEW MEXICO OIL CONSERVATION COMMISSION  
WELL LOCATION AND ACERAGE DEDICATION PLAT

RECEIVED

AUG 9 1971

U. S. GEOLOGICAL SURVEY  
FARMINGTON, N. M.

1

All distances must be from the outer boundaries of the Section

Owner: J. F. MADDOX

Allotment # 928  
LONG SHOT

Unit Entry: H Section: 28 Township: 17 N Range: 13 W County: MCKINLEY

Acres for the Corner of Well: 1980

Ground Area: 6972.0

WILDCAT

40

Acres

- Outline the acreage shown on the subject well location plat and place marks on the plat below
  - If more than one lease is related to the well, list the ownership thereof (from lease to working interest and royalty).
  - If more than one lease of different ownership is related to the well, and the interests of the owners have been consolidated by communization, unitization or forced pooling,
    - Yes
    - No
 If answer is "no" list the owners and tract(s) to which said interests consolidated. (Use reverse of this form if necessary)
- No allowable well be assigned to the well until all interests have been consolidated by communization, unitization, forced pooling or otherwise or until a non-petroleum unitization plan with interests has been approved by the Commission.

CERTIFICATION

I hereby certify that the information contained herein is true and complete to the best of my knowledge and belief.

*J. F. Maddox*  
Name: J. F. MADDOX  
Owner

Position

City

August 4, 1971

Date

I hereby certify that the well location shown on this plat was plotted from field notes of actual surveys made by me or under my supervision, and that the same is true and correct to the best of my knowledge and belief.

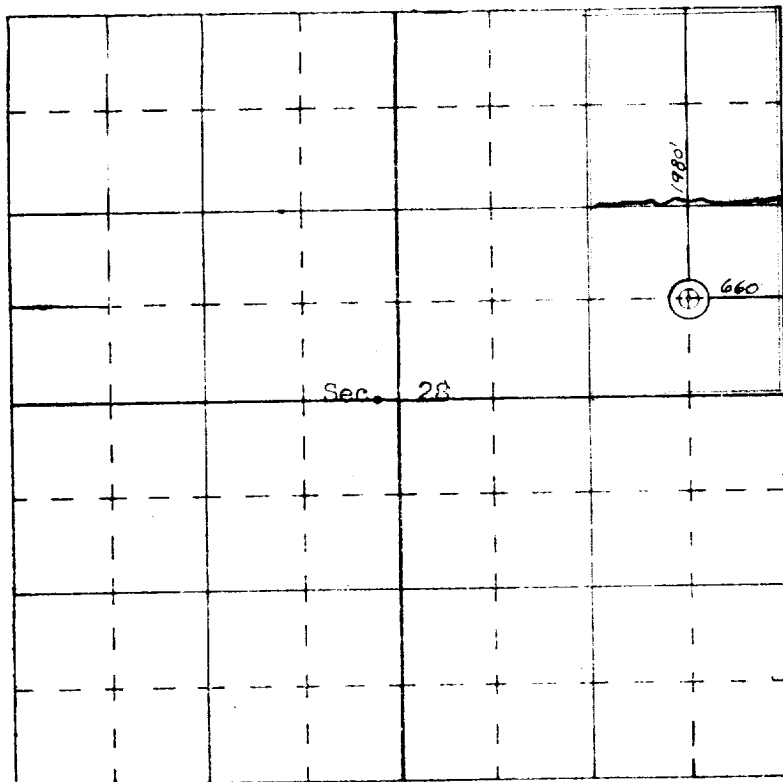
17 July, 1971

1463

James P. Leese  
Professional Surveyor  
New Mexico  
Land Surveyor License No. 1463

1463

Certificate No.



SCALE—4 INCHES EQUALS 1 MILE

SAN JUAN ENGINEERING COMPANY, FARMINGTON, N. M.