

NO. OF COPIES RECEIVED	5
DISTRIBUTION	
SANTA FE	1
FILE	1
U.S.G.S.	2
LAND OFFICE	
OPERATOR	1

NEW MEXICO OIL CONSERVATION COMMISSION

Form C-101
Revised 1-4-65 30-031-20339

5A. Indicate Type of Lease	
STATE <input type="checkbox"/>	FEE <input checked="" type="checkbox"/>
5. State Oil & Gas Lease No.	

APPLICATION FOR PERMIT TO DRILL, DEEPEN, OR PLUG BACK

1a. Type of Work		7. Unit Agreement Name	
b. Type of Well OIL WELL <input checked="" type="checkbox"/> GAS WELL <input type="checkbox"/> OTHER <input type="checkbox"/>		Hospah Unit	
DEEPEN <input type="checkbox"/> PLUG BACK <input type="checkbox"/>		8. Farm or Lease Name	
SINGLE ZONE <input checked="" type="checkbox"/> MULTIPLE ZONE <input type="checkbox"/>		Hospah Sand Unit	
2. Name of Operator		9. Well No.	
Tesoro Petroleum Corporation		4-y	
3. Address of Operator		10. Field and Pool, or Wildcat	
8520 Crownhill Blvd., San Antonio, Texas 78209		Hospah Sand Unit	
4. Location of Well		12. County	
UNIT LETTER C LOCATED 530 FEET FROM THE North LINE		McKinley	
AND 2560 FEET FROM THE West LINE OF SEC. 1 TWP. 17N RGE. 9W NMPM			
19. Proposed Depth		19A. Formation	
1590'		Hospah	
20. Rotary or C.T.		Rotary	
21. Elevations (Show whether DF, RT, etc.)		21B. Drilling Contractor	
6950' GL		Aztec Well Servicing	
21A. Kind & Status Plug. Bond		22. Approx. Date Work will start	
Blanket		Aug. 20, 1971	

23. PROPOSED CASING AND CEMENT PROGRAM

SIZE OF HOLE	SIZE OF CASING	WEIGHT PER FOOT	SETTING DEPTH	SACKS OF CEMENT	EST. TOP
12 1/2"	8-5/8"	24.0	60'	50 sx	Circulate
7-7/8"	5 1/2"	14.0	1550'	150 sx	880'
4-3/4"	Open Hole	To	1590'		

We propose to drill a 12 1/2" surface hole and set 60' - 8-5/8" surface pipe. We will drill to 1550' and run an electric log. We will set 5 1/2" casing in the top of the Upper Hospah sand. We will then deepen and complete open hole in the Upper Hospah sand as a producer in the unit waterflood.

APPROVAL VALID
FOR 90 DAYS UNLESS
DRILLING COMMENCED,

EXPIRES 11-21-71



IN ABOVE SPACE DESCRIBE PROPOSED PROGRAM: IF PROPOSAL IS TO DEEPEN OR PLUG BACK, GIVE DATA ON PRESENT PRODUCTIVE ZONE AND PROPOSED NEW PRODUCTIVE ZONE. GIVE BLOWOUT PREVENTER PROGRAM, IF ANY.

I hereby certify that the information above is true and complete to the best of my knowledge and belief.

Signed X. H. Benman Title Mgr. Prod. Engr. Date August 12, 1971

(This space for State Use)

APPROVED BY Ernest C. Cline TITLE Sup. Dist. III DATE 8-23-71

CONDITIONS OF APPROVAL, IF ANY:

Subject to approval of non-standard location prior to production

**NEW MEXICO OIL CONSERVATION COMMISSION
WELL LOCATION AND ACREAGE DEDICATION PLAT**

Form C-102
Supersedes C-128
Effective 1-1-65

All distances must be from the outer boundaries of the Section.

Operator Tesoro Petroleum Corporation			Lease Sand Unit		Well No. 4-X
Unit Letter C	Section 1	Township 17 North	Range 9 West	County McKinley	
Actual Footage Location of Well: 530 feet from the North line and 2560 feet from the West line					
Ground Level Elev. 6950	Producing Formation Hospah		Pool Hospah - Upper Sand		Dedicated Acreage: Acres

1. Outline the acreage dedicated to the subject well by colored pencil or hachure marks on the plat below.
2. If more than one lease is dedicated to the well, outline each and identify the ownership thereof (both as to working interest and royalty).
3. If more than one lease of different ownership is dedicated to the well, have the interests of all owners been consolidated by communitization, unitization, force-pooling, etc?

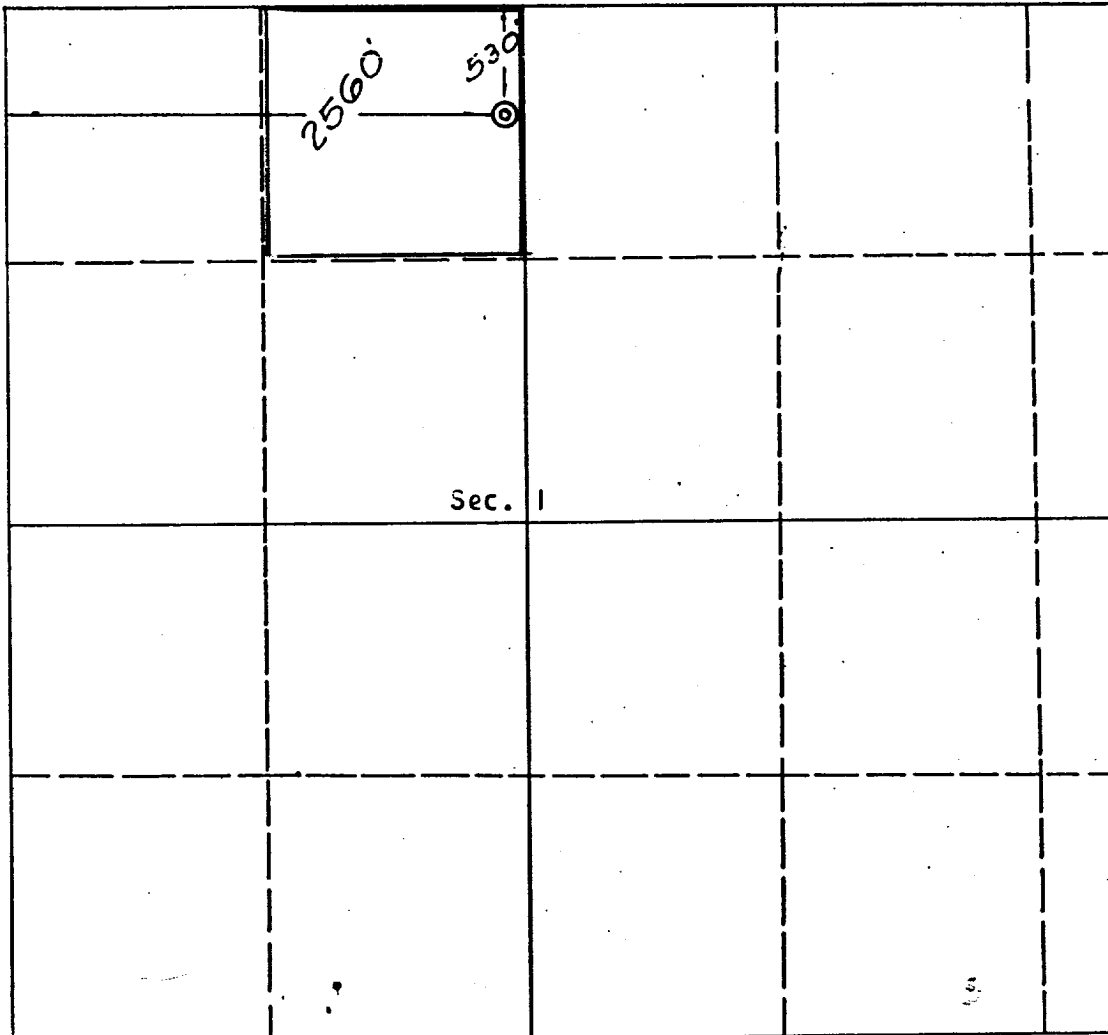
☒ Yes ☐ No If answer is "yes," type of consolidation Unitization

If answer is "no," list the owners and tract descriptions which have actually been consolidated (Use reverse side of this form if necessary.) _____

No allowable will be assigned to the well until all interests have been consolidated (by communitization, unitization, forced-pooling, or otherwise) or until a non-standard unit, eliminating such interests, has been approved by the Commission.

AUG 24 1971

OIL CON. COM.
DIST. 3

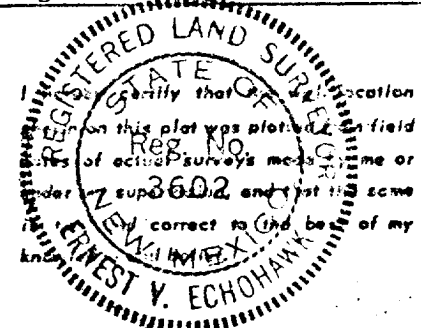


CERTIFICATION

I hereby certify that the information contained herein is true and complete to the best of my knowledge and belief.

Name
R. H. Denman
Position
Mgr. of Production Engineering
Company
TESORO PETROLEUM CORPORATION

Date
August 20, 1971



Date Surveyed
August 8, 1971
Registered Professional Engineer
and/or Land Surveyor

E. V. Echohawk
Certificate No. **3602**
E. V. Echohawk L.S.