

NO. OF COPIES RECEIVED	5
DISTRIBUTION	
SANTA FE	1
FILE	1
U.S.G.S.	1
LAND OFFICE	
OPERATOR	1

# NEW MEXICO OIL CONSERVATION COMMISSION

Form C-101  
Revised 1-1-65 30-231-71-10

5A. Indicate Type of Lease	
STATE <input type="checkbox"/>	FEE <input checked="" type="checkbox"/>
5. State Oil & Gas Lease No.	

## APPLICATION FOR PERMIT TO DRILL, DEEPEN, OR PLUG BACK

1a. Type of Work		7. Unit Agreement Name	
b. Type of Well OIL WELL <input checked="" type="checkbox"/> GAS WELL <input type="checkbox"/> OTHER <input type="checkbox"/>		Hospah Unit	
DRILL <input checked="" type="checkbox"/> DEEPEN <input type="checkbox"/> PLUG BACK <input type="checkbox"/>		8. Farm or Lease Name	
SINGLE ZONE <input checked="" type="checkbox"/> MULTIPLE ZONE <input type="checkbox"/>		Hospah Sand Unit	
2. Name of Operator		9. Well No.	
Tesoro Petroleum Corporation		11-Y	
3. Address of Operator		10. Field	
8520 Crownhill Blvd., San Antonio, Texas 78209		Hospah Sand Unit	
4. Location of Well		12. County	
UNIT LETTER F LOCATED 2110 FEET FROM THE North LINE		McKinley	
AND 2345 FEET FROM THE West LINE OF SEC. 1 TWP. 17N RGE. 9W NMPM			
19. Proposed Depth		19A. Formation	
1560'		Hospah	
20. Rotary or C.T.		Rotary	
21. Elevations (Show whether DF, RT, etc.)		21B. Drilling Contractor	
6923' Ground		Aztec Well Servicing	
21A. Kind & Status Plug, Bond		22. Approx. Date Work will start	
Blanket		Aug. 20, 1971	

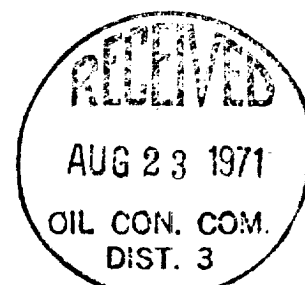
## 23. PROPOSED CASING AND CEMENT PROGRAM

SIZE OF HOLE	SIZE OF CASING	WEIGHT PER FOOT	SETTING DEPTH	SACKS OF CEMENT	EST. TOP
12-1/4"	8-5/8"	24.0	60'	50 sx	Circulate
7-7/8"	5-1/2"	14.0	1520'	150 sx	850'
4-3/4"	Open Hole	To	1560'		

We propose to drill a 12 1/4" surface hole and set 60' - 8-5/8" surface pipe. We will drill to 1520' and run an electric log. We will set 5 1/2" casing in the top of the Upper Hospah sand. We will then deepen and complete open hole in the Upper Hospah sand as a producer in the unit waterflood.

APPROVAL VALID  
FOR 90 DAYS UNLESS  
DRILLING COMMENCED,

EXPIRES 11-21-71



IN ABOVE SPACE DESCRIBE PROPOSED PROGRAM: IF PROPOSAL IS TO DEEPEN OR PLUG BACK, GIVE DATA ON PRESENT PRODUCTIVE ZONE AND PROPOSED NEW PRODUCTIVE ZONE. GIVE BLOWOUT PREVENTER PROGRAM, IF ANY.

I hereby certify that the information above is true and complete to the best of my knowledge and belief.

Signed K. H. Anderson Title Mgr. Prod. Engr. Date August 12, 1971

(This space for State Use)

APPROVED BY Ernest Chavez TITLE SUPERVISOR DIST. #3 DATE AUG 23 1971

CONDITIONS OF APPROVAL, IF ANY:

subject to approval of Non-Standard location prior to production

NEW MEXICO OIL CONSERVATION COMMISSION  
WELL LOCATION AND ACREAGE DEDICATION PLAT

Form C-102  
Supersedes C-101  
Effective 1-1-71

All distances must be from the outer boundaries of the section.

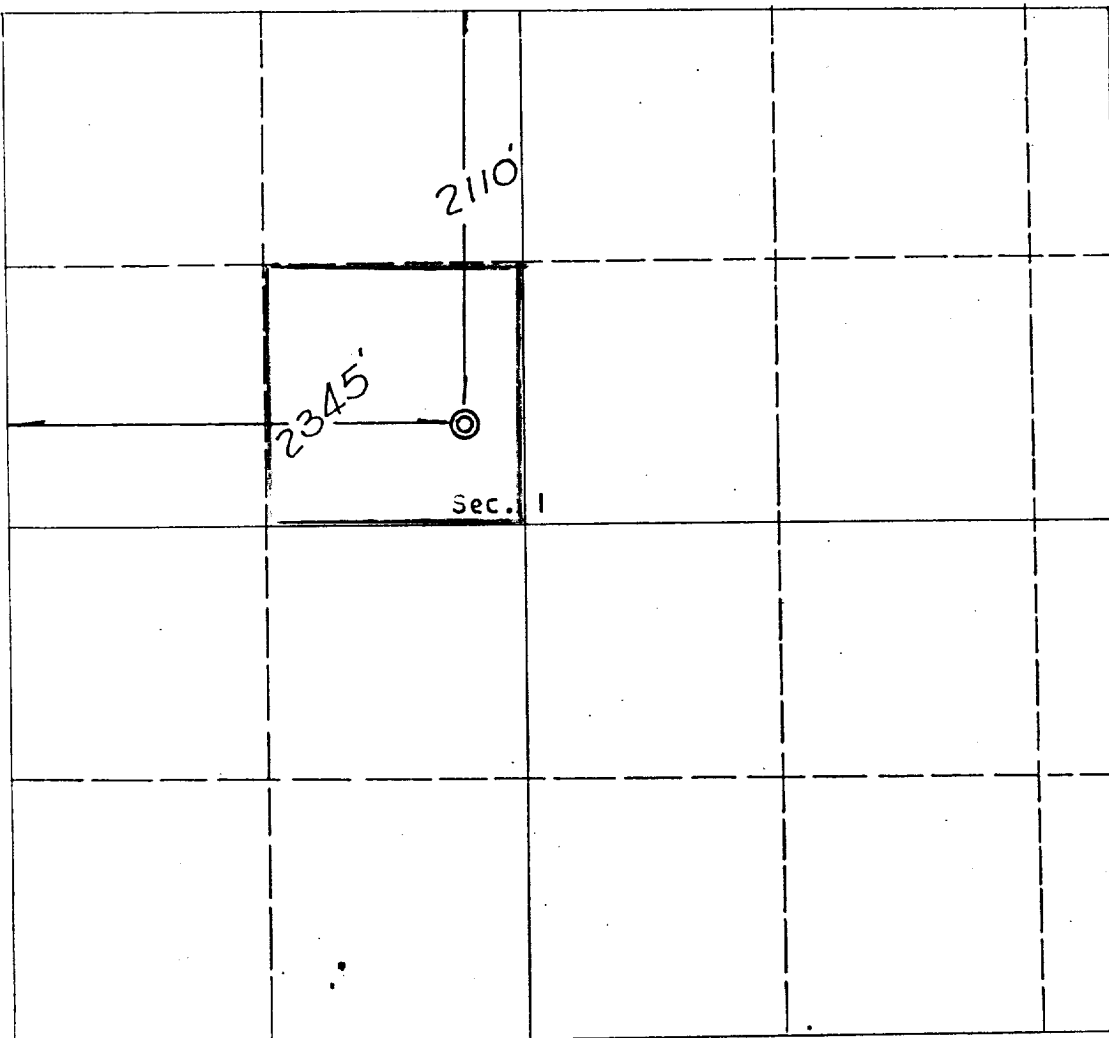
Operator <b>Tesoro Petroleum Corporation</b>			Lease <b>Sand Unit</b>		Well No. <b>11-X</b>
Unit Letter <b>F</b>	Section <b>I</b>	Township <b>17 North</b>	Range <b>9 West</b>	County <b>McKinley</b>	
Actual Footage Location of Well: <b>2110</b> feet from the <b>North</b> line and <b>2345</b> feet from the <b>West</b> line					
Ground Level Elev. <b>6923</b>	Producing Formation <b>Hospah</b>		Pool <b>Hospah - Upper Sand</b>		Dedicated Acreage: <b>Acreage</b>

1. Outline the acreage dedicated to the subject well by colored pencil or hatchure marks on the plat below.
2. If more than one lease is dedicated to the well, outline each and identify the ownership thereof (both as to working interest and royalty).
3. If more than one lease of different ownership is dedicated to the well, have the interests of all owners been consolidated by communitization, unitization, force-pooling, etc?

☒ Yes ☐ No If answer is "yes," type of consolidation Unitization

If answer is "no," list the owners and tract descriptions which have actually been consolidated: (Use reverse side of this form if necessary.)

No allowable will be assigned to the well until all interests have been consolidated (by communitization, unitization, forced-pooling, or otherwise) or until a non-standard unit, eliminating such interests, has been approved by the Commission.



CERTIFICATION

I hereby certify that the information contained herein is true and complete to the best of my knowledge and belief.

Name  
**R. H. Denman**  
Position  
**Mgr. of Production Engineering**  
Company  
**TESORO PETROLEUM CORPORATION**

Date  
**August 20, 1971**

REGISTERED LAND SURVEYOR  
Certify that the location of the well is correct and that the same is in accordance with the actual surveys made and under my supervision, and that the same is correct in accordance with my knowledge.

Date Surveyed  
**August 15, 1971**  
Registered Professional Engineer and/or Land Surveyor

**E. V. Echodhawk**  
Certificate No. **3602**  
**E. V. Echodhawk L.**