

UNITED STATES
DEPARTMENT OF THE INTERIOR
GEOLOGICAL SURVEY

APPLICATION FOR PERMIT TO DRILL, DEEPEN, OR PLUG BACK

1a. TYPE OF WORK

DRILL ☒DEEPEN ☐PLUG BACK ☐

b. TYPE OF WELL

OIL
WELL ☒GAS
WELL ☐

OTHER

SINGLE
ZONE ☒MULTIPLE
ZONE ☐

2. NAME OF OPERATOR

Tenneco Oil Company

3. ADDRESS OF OPERATOR

Suite 1200 Lincoln Tower Bldg., Denver, Colo. 80203

4. LOCATION OF WELL (Report location clearly and in accordance with any State requirements.)*

At surface

1700' F/NL and 700' F/WL

At proposed prod. zone

14. DISTANCE IN MILES AND DIRECTION FROM NEAREST TOWN OR POST OFFICE*

12. COUNTY OR PARISH 13. STATE
McKinley New Mexico15. DISTANCE FROM PROPOSED*
LOCATION TO NEAREST
PROPERTY OR LEASE LINE, FT.
(Also to nearest drlg. unit line, if any)

16. NO. OF ACRES IN LEASE

17. NO. OF ACRES ASSIGNED
TO THIS WELL

40

18. DISTANCE FROM PROPOSED LOCATION*
TO NEAREST WELL, DRILLING, COMPLETED,
OR APPLIED FOR, ON THIS LEASE, FT.19. PROPOSED DEPTH
167520. ROTARY OR CABLE TOOLS
Rotary

21. ELEVATIONS (Show whether DF, RT, GR, etc.)

7075 GR

22. APPROX. DATE WORK WILL START*
Upon Approval

23. PROPOSED CASING AND CEMENTING PROGRAM

SIZE OF HOLE	SIZE OF CASING	WEIGHT PER FOOT	SETTING DEPTH	QUANTITY OF CEMENT
12-1/4	9-5/8	36	65	suff. to circulate
8-3/4	7	20	1675	suff. to fill 500' above shallowest pay zone.

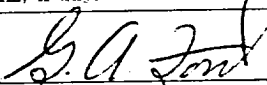
Above well to be a 1675' South Hospah Lower Sand Well. Well will be drilled to T.D., Logged, and if commercial production is indicated, casing will be run, perforated and formation treated as necessary to establish commercial production. B.O.P. to be tested each 24 hours.

Unit Letter E

IN ABOVE SPACE DESCRIBE PROPOSED PROGRAM: If proposal is to deepen or plug back, give data on present productive zone and proposed new productive zone. If proposal is to drill or deepen directionally, give pertinent data on subsurface locations and measured and true vertical depths. Give blowout preventer program, if any.

24.

SIGNED



TITLE Sr. Production Clerk

DATE 10-20-71

(This space for Federal or State office use)

PERMIT NO.

APPROVAL DATE

APPROVED BY

TITLE

CONDITIONS OF APPROVAL, IF ANY:

NEW MEXICO OIL CONSERVATION COMMISSION

WELL LOCATION AND ACERAGE DEDICATION PLAT

All distances must be from the outer boundaries of the Section

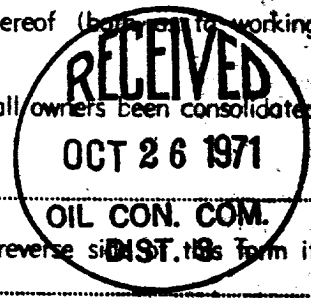
Operator TENNECO OIL COMPANY			Lease HOSPAH		Well No. 46
Unit Letter E	Section 12	Township 17 NORTH	Range 9 WEST	County Mc KINLEY	
Actual Footage Location of Well: <div style="display: flex; justify-content: space-between;"> 1700 feet from the NORTH line and 700 feet from the WEST line </div>					
Ground Level Elev. 7075.0	Producing Formation Hospah	Pool So. Hospah Lower Sand	Dedicated Acreage: 40 Acres		

1. Outline the acreage dedicated to the subject well by colored pencil or hatchure marks on the plat below.
2. If more than one lease is dedicated to the well, outline each and identify the ownership thereof (both as to working interest and royalty).
3. If more than one lease of different ownership is dedicated to the well, have the interests of all owners been consolidated by communitization, unitization, force-pooling, etc?

() Yes () No If answer is "yes," type of consolidation _____

If answer is "no," list the owners and tract descriptions which have actually consolidated. (Use reverse side of this form if necessary.) _____

No allowable will be assigned to the well until all interests have been consolidated (by communitization, unitization, forced-pooling, or otherwise) or until a non standard unit, eliminating such interests, has been approved by the Commission.



CERTIFICATION

I hereby certify that the information contained herein is true and complete to the best of my knowledge and belief.

G. A. Ford

Name **G. A. Ford**

Position _____

Sr. Production Clerk

Company _____

Tenneco Oil Company

Date _____

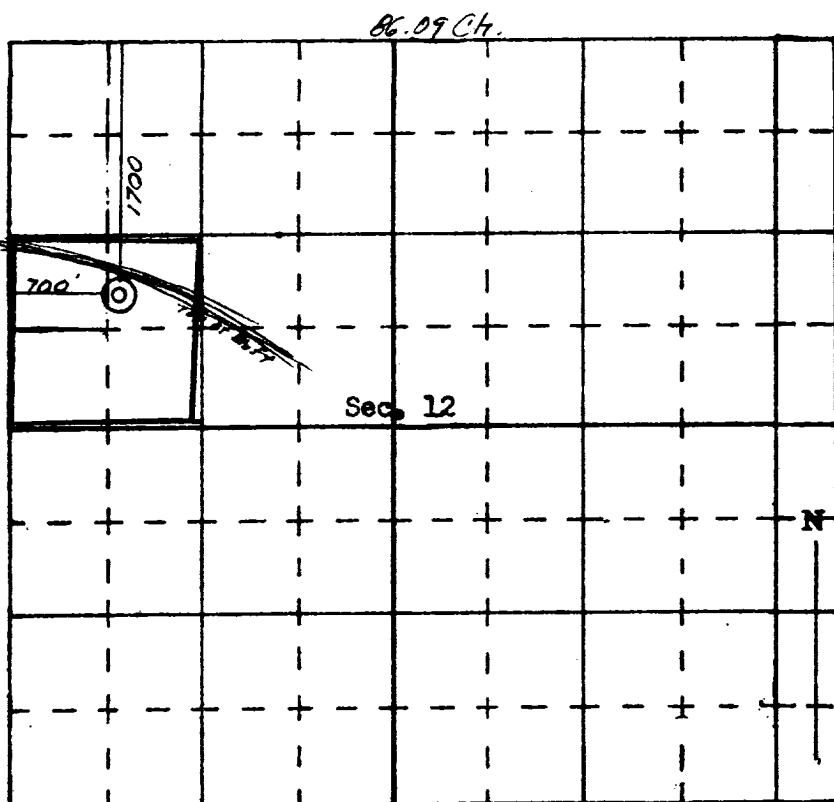
10-29-71

I hereby certify that the well location shown on this plat was plotted from field notes of actual surveys made by me or under my supervision, and that the same is true and correct to the best of my knowledge and belief.

Date Surveyed **11 Oct 1971**

Registered Professional Engineer and Land Surveyor **NO. 1468 JAMES P. LEESE**

Certificate No. **JAMES P. LEESE**



SCALE—4 INCHES EQUALS 1 MILE *85.80 Ch.*

SAN JUAN ENGINEERING COMPANY, FARMINGTON, N. M.