

UNITED STATES
DEPARTMENT OF THE INTERIOR
GEOLOGICAL SURVEY

APPLICATION FOR PERMIT TO DRILL, DEEPEN, OR PLUG BACK

1a. TYPE OF WORK

DRILL ☒DEEPEN ☐PLUG BACK ☐

b. TYPE OF WELL

OIL
WELL ☒GAS
WELL ☐OTHER ☐SINGLE
ZONE ☒MULTIPLE
ZONE ☐

2. NAME OF OPERATOR

Tenneco Oil Company

3. ADDRESS OF OPERATOR

Suite 1200 Lincoln Tower Building, Denver, Colo. 80203

4. LOCATION OF WELL (Report location clearly and in accordance with any State requirements)
At surface

1450' F/NL and 2782' F/EL

At proposed prod. zone

14. DISTANCE IN MILES AND DIRECTION FROM NEAREST TOWN OR POST OFFICE

15. DISTANCE FROM PROPOSED*

LOCATION TO NEAREST
PROPERTY OR LEASE LINE, FT.
(Also to nearest drg. unit line, if any)18. DISTANCE FROM PROPOSED LOCATION*
TO NEAREST WELL, DRILLING, COMPLETED,
OR APPLIED FOR, ON THIS LEASE, FT.

16. NO. OF ACRES IN LEASE

1640

19. PROPOSED DEPTH

17. NO. OF ACRES ASSIGNED
TO THIS WELL

40

20. ROTARY OR CABLE TOOLS

Rotary

21. ELEVATIONS (Show whether DF, RT, GR, etc.)

6999' GR

22. APPROX. DATE WORK WILL START*

Upon Approval

23.

PROPOSED CASING AND CEMENTING PROGRAM

SIZE OF HOLE	SIZE OF CASING	WEIGHT PER FOOT	SETTING DEPTH	QUANTITY OF CEMENT
12-1/4	8-5/8	24	65	suff. to circulate
7-7/8	5-1/2	15.5	1640	suff. to fill 500' above shallowest pay zone

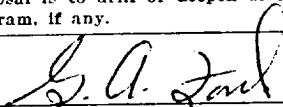
Above well to be a 1640' South Hospah Lower Sand Well. Well will be drilled to T.D., Logged, and if commercial production is indicated, casing will be run, perforated and formation treated as necessary to establish commercial production. B.O.P. to be tested each 24 hours.

Unit Letter G

IN ABOVE SPACE DESCRIBE PROPOSED PROGRAM: If proposal is to deepen or plug back, give data on present productive zone and proposed new productive zone. If proposal is to drill or deepen directionally, give pertinent data on subsurface locations and measured and true vertical depths. Give blowout preventer program, if any.

24.

SIGNED

TITLE Sr. Production ClerkDATE 10-20-71

(This space for Federal or State office use)

PERMIT NO.

APPROVAL DATE

APPROVED BY



TITLE

CONDITIONS OF APPROVAL, IF ANY:

NEW MEXICO OIL CONSERVATION COMMISSION WELL LOCATION AND ACERAGE DEDICATION PLAT

All distances must be from the outer boundaries of the Section

Operator TENNECO OIL COMPANY			Lease HOSPAH		Well No. 48
Unit Letter G	Section 12	Township 17 NORTH	Range 9 WEST	County Mc KIMLEY	
Actual Footage Location of Well: 1450 feet from the NORTH line and 2782 feet from the EAST line					
Ground Level Elev. 6999.0	Producing Formation Beulah	Pool So. Beulah Lower Sand		Dedicated Acreage: 86.09 Acres	

- Outline the acreage dedicated to the subject well by colored pencil or hachure marks on the plat below.
- If more than one lease is dedicated to the well, outline each and identify the ownership thereof (both as to working interest and royalty).
- If more than one lease of different ownership is dedicated to the well, have the interests of all leases been consolidated by communitization, unitization, force-pooling, etc?

() Yes () No If answer is "yes," type of consolidation _____

If answer is "no," list the owners and tract descriptions which have actually consolidated. (Use reverse side of this form if necessary.) _____

No allowable will be assigned to the well until all interests have been consolidated (by communitization, unitization, force-pooling, or otherwise) or until a non standard unit, eliminating such interests, has been approved by the Commission.

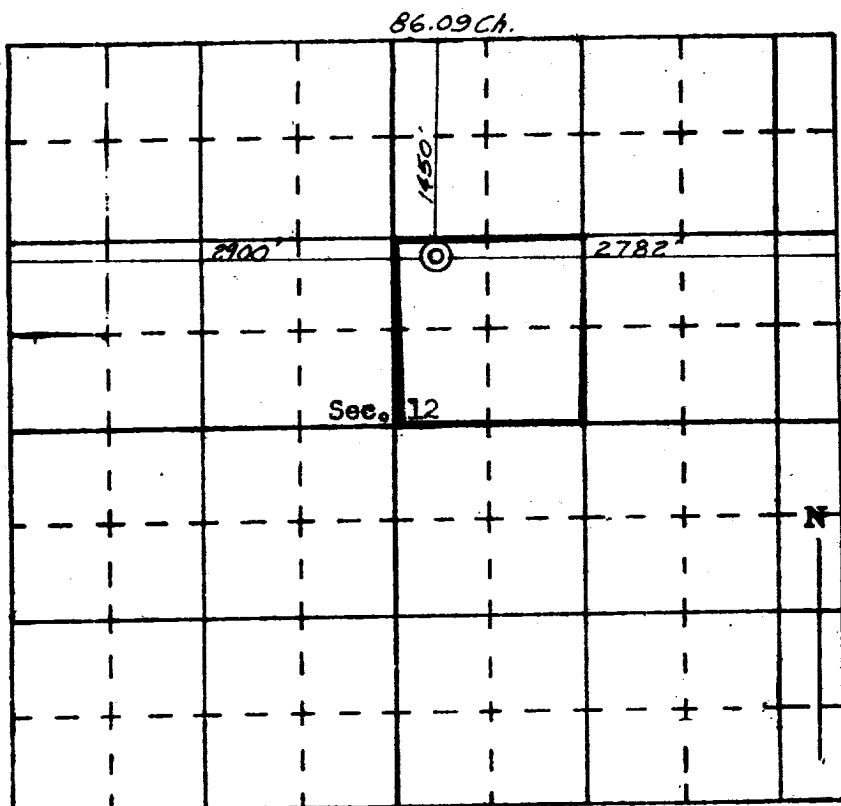
CERTIFICATION

I hereby certify that the information contained herein is true and complete to the best of my knowledge and belief.

B. A. Ford
Name **B. A. Ford**
Position **So. Production Clerk**
Company **Tenneco Oil Company**
Date **10-26-71**

I hereby certify that the well location shown on this plat was plotted from field notes of actual surveys made by me or under my supervision and that the same is true and correct to the best of my knowledge and belief.

San Juan Engineering Company
Date Surveyed **10-26-71**
Professional Engineer and/or Surveyor **463**
Certificate No. **1063**



SCALE—4 INCHES EQUALS 1 MILE **85.80 Ch.**

SAN JUAN ENGINEERING COMPANY, FARMINGTON, N. M.