

UNITED STATES  
DEPARTMENT OF THE INTERIOR  
GEOLOGICAL SURVEY

30-031-20364

5. LEASE DESIGNATION AND SERIAL NO.

N1-8270 8269

6. IF INDIAN, ALLOTTEE OR TRIBE NAME

7. UNIT AGREEMENT NAME

8. FARM OR LEASE NAME

Hospah

9. WELL NO.

50

10. FIELD AND POOL, OR WILDCAT

So. Hospah Lower Sand

11. SEC., T., R., M., OR BLK.  
AND SURVEY OR AREA

Sec. 12, T-17-N, R-9-W

12. COUNTY OR PARISH

McKinley

13. STATE

New Mexico

1a. TYPE OF WORK

DRILL ☒DEEPEN ☐PLUG BACK ☐

b. TYPE OF WELL

OIL  
WELL ☒GAS  
WELL ☐

OTHER

SINGLE  
ZONE ☒MULTIPLE  
ZONE ☐

2. NAME OF OPERATOR

Tenneco Oil Company

3. ADDRESS OF OPERATOR

Suite 1200 Lincoln Tower Bldg, Denver, Colo.

4. LOCATION OF WELL (Report location clearly and in accordance with any State requirements\*)

At surface

950' F/N1 and 900' F/EL

At proposed prod. zone

14. DISTANCE IN MILES AND DIRECTION FROM NEAREST TOWN OR POST OFFICE\*

OIL CON. COM.

15. DISTANCE FROM PROPOSED\*

LOCATION TO NEAREST  
PROPERTY OR LEASE LINE, FT.  
(Also to nearest drlg. unit line, if any)

16. NO. OF ACRES IN LEASE

17. NO. OF ACRES ASSIGNED  
TO THIS WELL

52.12

18. DISTANCE FROM PROPOSED LOCATION\*  
TO NEAREST WELL, DRILLING, COMPLETED,  
OR APPLIED FOR, ON THIS LEASE, FT.

19. PROPOSED DEPTH

1615

20. ROTARY OR CABLE TOOLS

Rotary

21. ELEVATIONS (Show whether DF, RT, GR, etc.)

22. APPROX. DATE WORK WILL START\*

Upon Approval

## 23. PROPOSED CASING AND CEMENTING PROGRAM

SIZE OF HOLE	SIZE OF CASING	WEIGHT PER FOOT	SETTING DEPTH	QUANTITY OF CEMENT
12-1/4"	9-5/8	36	65'	suff. to circulate
8-3/4"	7	20	1615'	suff. to fill 500' above shallowest pay zone.

Above well to be a 1615 South Hospah Lower Sand Well. Well will be drilled to T.D., Logged, and if commercial production is indicated, casing will be run, perforated, and formation treated as necessary to establish commercial production. B.O.P. to be tested each 24 hours.

## Unit Letter A

IN ABOVE SPACE DESCRIBE PROPOSED PROGRAM: If proposal is to deepen or plug back, give data on present productive zone and proposed new productive zone. If proposal is to drill or deepen directionally, give pertinent data on subsurface locations and measured and true vertical depths. Give blowout preventer program, if any.

24.

SIGNED

TITLE Sr. Production Clerk

DATE 10-20-71

(This space for Federal or State office use)

PERMIT NO.

APPROVAL DATE

APPROVED BY

TITLE

CONDITIONS OF APPROVAL, IF ANY:

# NEW MEXICO OIL CONSERVATION COMMISSION WELL LOCATION AND ACERAGE DEDICATION PLAT

All distances must be from the outer boundaries of the Section

Operator <b>TRINIECO OIL COMPANY</b>			Lease <b>HOSPAH</b>			Well No. <b>50</b>		
Unit Letter <b>A</b>	Section <b>12</b>	Township <b>17 NORTH</b>	Range <b>9 WEST</b>	County <b>Mc KINLEY</b>				
Actual Footage Location of Well: <b>950</b> feet from the <b>NORTH</b> line and <b>900</b> feet from the <b>EAST</b> line								
Ground Level Elev. <b>6942.0</b>	Producing Formation <b>Hospah</b>		Pool <b>So. Hospah Lower Sand</b>			Dedicated Acreage: <b>22.12</b> Acres		

1. Outline the acreage dedicated to the subject well by colored pencil or hatchure marks on the plat below.
2. If more than one lease is dedicated to the well, outline each and identify the ownership thereof (as to working interest and royalty),
3. If more than one lease of different ownership is dedicated to the well, have the interests of all owners been consolidated by communitization, unitization, force-pooling, etc?

( ) Yes ( ) No If answer is "yes," type of consolidation \_\_\_\_\_

If answer is "no," list the owners and tract descriptions which have actually consolidated. (Use reverse side of this necessary.) \_\_\_\_\_

No allowable will be assigned to the well until all interests have been consolidated (by communitization, unitization, forced-pooling, or otherwise) or until a non standard unit, eliminating such interests, has been approved by the Commission.

## CERTIFICATION

I hereby certify that the information contained herein is true and complete to the best of my knowledge and belief.

Name *G. A. Lind*

Position

**Sr. Production Clerk**

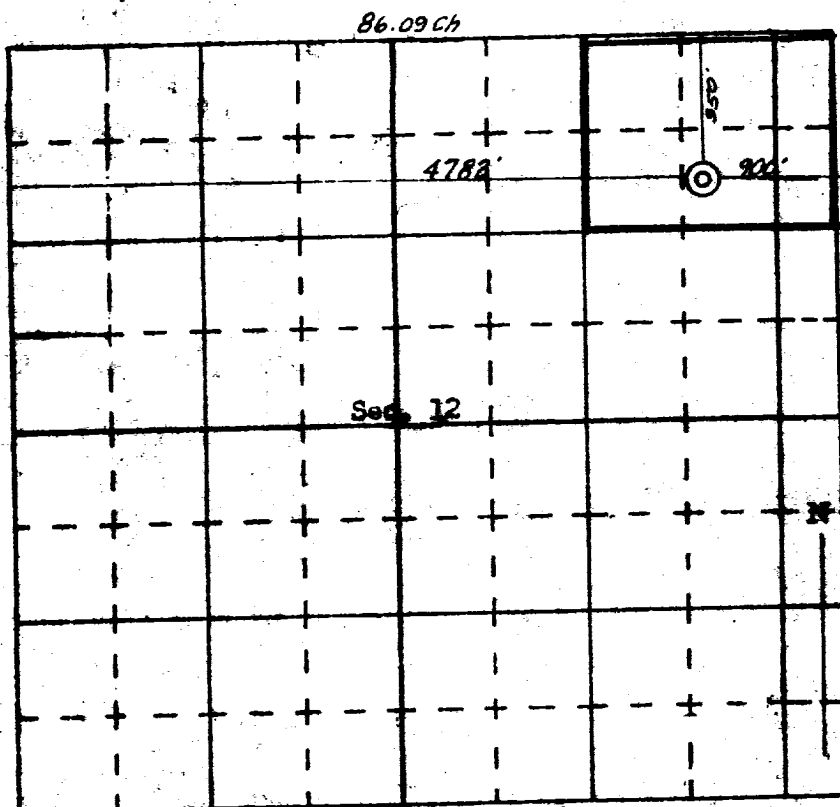
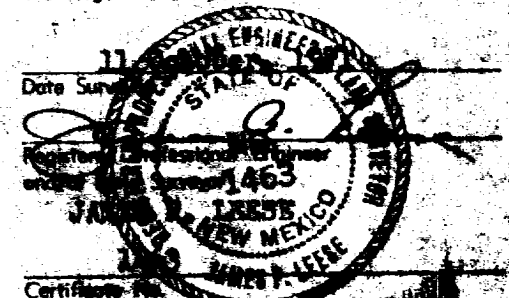
Company

**Trinisco Oil Company**

Date

**10-24-71**

I hereby certify that the well location shown on this plat was plotted from field notes of actual surveys made by me or under my supervision, and that the same is true and correct to the best of my knowledge and belief.



SCALE—4 INCHES EQUALS 1 MILE **85.80 ch.**

SAN JUAN ENGINEERING COMPANY, FARMINGTON, N. M.