

UNITED STATES
DEPARTMENT OF THE INTERIOR
GEOLOGICAL SURVEY

APPLICATION FOR PERMIT TO DRILL, DEEPEN, OR PLUG BACK

1a. TYPE OF WORK

DRILL ☐DEEPEN ☐PLUG BACK ☒

b. TYPE OF WELL

OIL
WELL ☒GAS
WELL ☐

OTHER

SINGLE
ZONE ☐MULTIPLE
ZONE ☐

2. NAME OF OPERATOR

Tesoro Petroleum Corporation

3. ADDRESS OF OPERATOR

1776 Lincoln Street, Suite 1012, Denver, Colorado 80203

4. LOCATION OF WELL (Report location clearly and in accordance with any State or Federal law.)

At surface
1600' FSL and 330 FEL

At proposed prod. zone

Same as above.

14. DISTANCE IN MILES AND DIRECTION FROM NEAREST TOWN OR POST OFFICE*

1 mile east of Hospah, New Mexico

15. DISTANCE FROM PROPOSED*

LOCATION TO NEAREST
PROPERTY OR LEASE LINE, FT.
(Also to nearest drlg. unit line, if any)

16. NO. OF ACRES IN LEASE

551.94+

18. DISTANCE FROM PROPOSED LOCATION*

TO NEAREST WELL, DRILLING, COMPLETED,
OR APPLIED FOR, ON THIS LEASE, FT.

19. PROPOSED DEPTH

PBSD 1590'

17. NO. OF ACRES ASSIGNED
TO THIS WELL

40

20. ROTARY OR CABLE TOOLS

Pulling unit

21. ELEVATIONS (Show whether DF, RT, GR, etc.)

6860' GR; 6872' KB

22. APPROX. DATE WORK WILL START*

February 10, 1974

23.

PROPOSED CASING AND CEMENTING PROGRAM

SIZE OF HOLE	SIZE OF CASING	WEIGHT PER FOOT	SETTING DEPTH	QUANTITY OF CEMENT

11/7/73 Well capable of pumping only 3/4 BO + 17 BWPD from Dakota 'D' (not considered commercial).

Tesoro proposes to plug back from the Dakota 'D' and complete in the Upper Hospah according to the following procedure:

1. Pull rods, tubing and set CIBP @ 2580'.
2. Perforate 1598 to 1600, set a cement retainer @ 1590' and block squeeze top of Lower Hospah zone with approximately 75 sx. of cement.
3. Perforate Upper Hospah 1554-61' and 1563-67' w/2 JSPF.
4. Rerun tubing, swab well off and test.
5. If well is commercially productive, place well on pump and potential.

IN ABOVE SPACE DESCRIBE PROPOSED PROGRAM: If proposal is to deepen or plug back, give data on present productive zone and proposed new productive zone. If proposal is to drill or deepen directionally, give pertinent data on subsurface locations and measured and true vertical depths. Give blowout preventer program, if any.

24.

SIGNED

R. Charles Margenau

TITLE District Engineer

DATE January 29, 1974

(This space for Federal or State office use)

PERMIT NO.

APPROVAL DATE

APPROVED BY

TITLE

CONDITIONS OF APPROVAL, IF ANY:

U. S. GEOLOGICAL SURVEY
FARMINGTON, N. M.

*See Instructions On Reverse Side

NEW MEXICO OIL CONSERVATION COMMISSION

WELL LOCATION AND ACERAGE DEDICATION PLAT

All distances must be from the outer boundaries of the Section

Lessee TESORO PETROLEUM CORPORATION				Lease HANSON		Well No. 24	
Section 6	Township 17 North	Range 8 West	County McKinley				
Acres 6860		Dedicated Acreage 40		Acres			

Outline the acreage dedicated to the subject well by colored pencil or hatchure marks on the plat below.

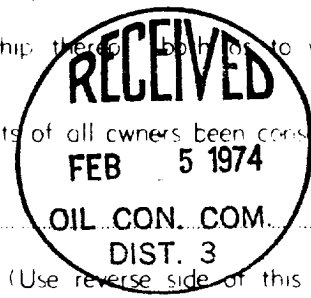
If more than one lease is dedicated to the well, outline each and identify the ownership thereof both as to working interest and royalty.

If more than one lease of different ownership is dedicated to the well, have the interests of all owners been consolidated (communitization, unitization, force-pooling, etc)?

Yes ☐ No ☐ If answer is "yes," type of consolidation _____

If answer is "no" list the owners and tract descriptions which have actually consolidated. (Use reverse side of this form if necessary.) _____

No allowable will be assigned to the well until all interests have been consolidated (by communitization, unitization, force-pooling, or otherwise) or until a non standard unit, eliminating such interests, has been approved by the Commission.



CERTIFICATION

I hereby certify that the information contained herein is true and complete to the best of my knowledge and belief.

Name J. Harry Ashford

Position _____

Company _____

Date _____

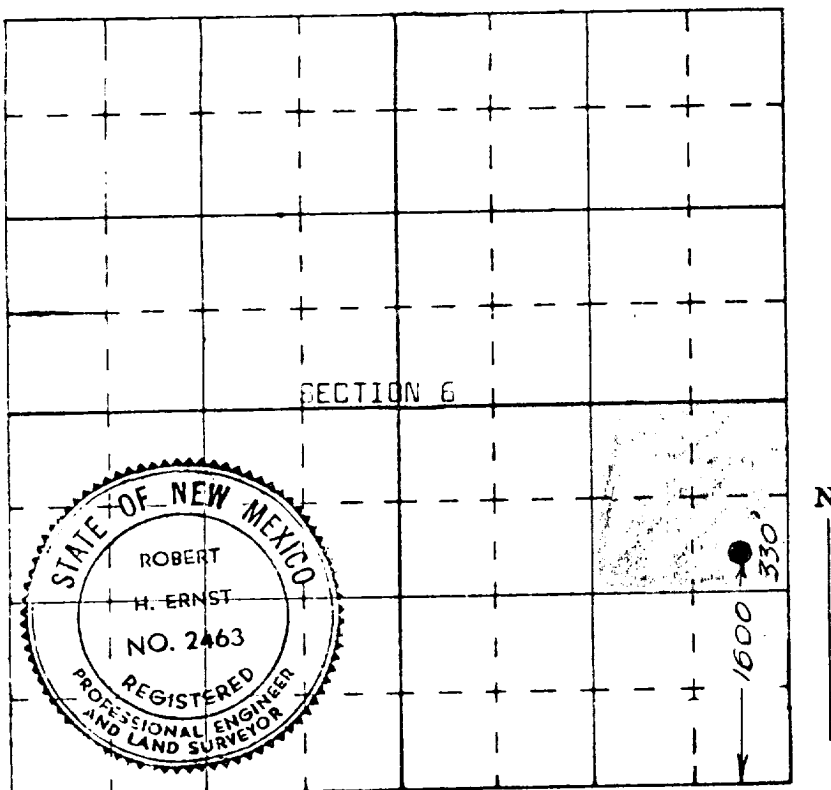
I hereby certify that the well location shown on this plat was plotted from field notes of actual surveys made by me or under my supervision, and that the same is true and correct to the best of my knowledge and belief.

13 July 1973

Date Surveyed 13 July 1973
Registered Professional Engineer and/or Land Surveyor

Robert H. Ernst
New Mexico PE & LS 2463

Certificate No. _____



ERNST ENGINEERING COMPANY
DURANGO, COLORADO