

30-031-20371

Form C-101
Revised 1-1-65

NEW MEXICO OIL CONSERVATION COMMISSION

NO. OF COPIES RECEIVED	5
DISTRIBUTION	
SANTA FE	1
FILE	1
U.S.G.S.	2
LAND OFFICE	
OPERATOR	1

5A. Indicate Type of Lease	
STATE <input type="checkbox"/>	FEE <input checked="" type="checkbox"/>
5. State Oil & Gas Lease No.	

APPLICATION FOR PERMIT TO DRILL, DEEPEN, OR PLUG BACK

1a. Type of Work DRILL <input checked="" type="checkbox"/> DEEPEN <input type="checkbox"/> PLUG BACK <input type="checkbox"/>		7. Unit Agreement Name Hospah Sand Unit	
b. Type of Well OIL WELL <input checked="" type="checkbox"/> GAS WELL <input type="checkbox"/> OTHER <input type="checkbox"/>		8. Farm or Lease Name	
2. Name of Operator Tesoro Petroleum Corporation		9. Well No. 85	
3. Address of Operator Suite 1012 Denver Center Bldg., 1776 Lincoln, Denver, 80203		10. Field and Pool, or Wildcat Hospah Upper Sand	
4. Location of Well UNIT LETTER G LOCATED 1500 FEET FROM THE North LINE AND 1925' FEET FROM THE East LINE OF SEC. 1 TWP. 17N RGE. 9W NMPM		12. County McKinley	
19. Proposed Depth 1650'		19A. Formation Upper Hospah	
20. Rotary or C.T. Rotary		21. Elevations (Show whether DF, RT, etc.) 6926 GR	
21A. Kind & Status Plug. Bond State Wide		21B. Drilling Contractor N.A.	
22. Approx. Date Work will start August 1, 1973			

23.

PROPOSED CASING AND CEMENT PROGRAM

SIZE OF HOLE	SIZE OF CASING	WEIGHT PER FOOT	SETTING DEPTH	SACKS OF CEMENT	EST. TOP
13-3/4	8-5/8	24	100' +	100	Circulate
7-7/8	5-1/2	14	1600' +	100'	
4-3/4	Open hole		1650' ±		

We propose to drill a 13-3/4" surface hole with a small rig and set 8-5/8" casing. We will then rig up a drilling rig and drill a 7-7/8" hole to the top of the Hospah formation and set 5-1/2" casing. We will move in a completion rig and drill the Hospah formation with crude oil and complete as an open hole completion. We will install BOPs on the 8-5/8" surface pipe and use them through out the drilling and completion operations.



IN ABOVE SPACE DESCRIBE PROPOSED PROGRAM; IF PROPOSAL IS TO DEEPEN OR PLUG BACK, GIVE DATA ON PRESENT PRODUCTIVE ZONE AND PROPOSED NEW PRODUCTIVE ZONE. GIVE BLOWOUT PREVENTER PROGRAM, IF ANY.

I hereby certify that the information above is true and complete to the best of my knowledge and belief.

Signed J. Harvey Ashford, Jr. Title Operations Manager Date 7/20/73

(This space for State Use)

APPROVED BY [Signature] TITLE SUPERVISOR DATE JUL 23 1973

CONDITIONS OF APPROVAL, IF ANY:

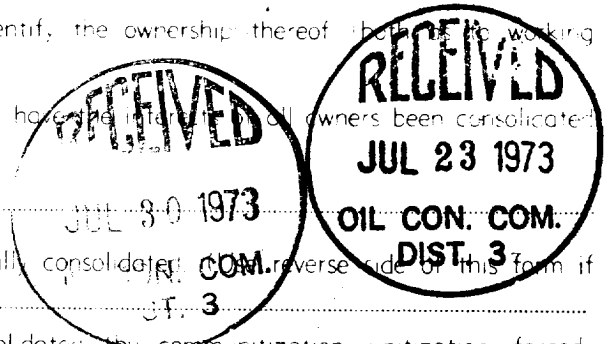
**NEW MEXICO OIL CONSERVATION COMMISSION
WELL LOCATION AND ACERAGE DEDICATION PLAT**

All distances must be from the outer boundaries of the Section

Operator TESORO PETROLEUM CORPORATION			Lease HOSPAP, SAND UNIT		Well No 85
Unit Letter G	Section 1	Township 17 North	Range 9 West	County McKinley	

Actual Footage Location of Well
1500 feet from the **North** line and **1925** feet from the **East** line
 Ground Level Elev. **6926 ungraded** Producing Formation **Hospah Sand** Pool **Hospah Upper Sand** Dedicated Acreage **40** Acres

- Outline the acreage dedicated to the subject well by colored pencil or hatchure marks on the plat below.
 - If more than one lease is dedicated to the well, outline each and identify the ownership thereof (both as to working interest and royalty).
 - If more than one lease of different ownership is dedicated to the well, have the interests of all owners been consolidated by communitization, unitization, force-pooling, etc?
☐ Yes ☐ No If answer is "yes," type of consolidation _____
 If answer is "no," list the owners and tract descriptions which have actually consolidated: _____ reverse side of this form if necessary.
- No allowable will be assigned to the well until all interests have been consolidated by communitization, unitization, forced-pooling, or otherwise or until a non standard unit, eliminating such interests, has been approved by the Commission.



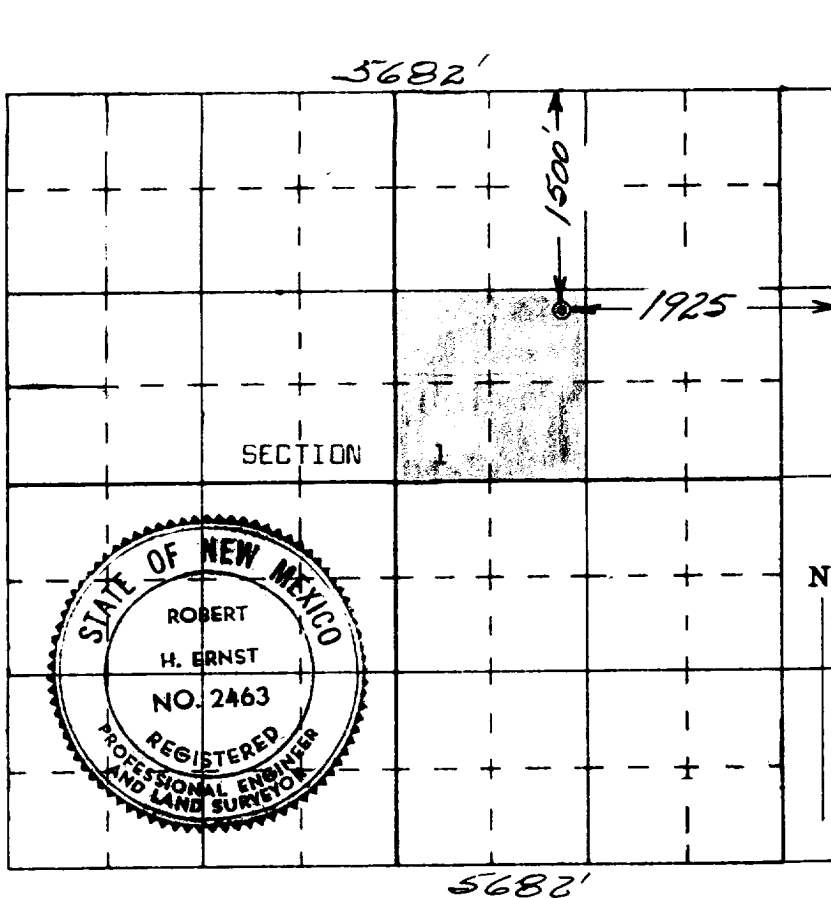
CERTIFICATION

I hereby certify that the information contained herein is true and complete to the best of my knowledge and belief.

J. Harvey Ashford, Jr.
 Name
J. Harvey Ashford, Jr.
 Position
Operations Manager
 Company
Tesoro Petroleum Corporation
 Date
7/20/73

I hereby certify that the well location shown on this plat was plotted from field notes of actual surveys made by me or under my supervision, and that the same is true and correct to the best of my knowledge and belief.

18 July 1973
 Date Surveyed
Robert H. Ernst
 Registered Professional Engineer
 and/or Land Surveyor
Robert H. Ernst
New Mexico PE & LS 2463
 Certificate No.



**ERNST ENGINEERING COMPANY
DURANGO, COLORADO**