

UNITED STATES
DEPARTMENT OF THE INTERIOR
GEOLOGICAL SURVEY

30-031-20419

LEASE DESIGNATION AND SERIAL NO.

USNM - 052931

APPLICATION FOR PERMIT TO DRILL, DEEPEN, OR PLUG BACK

1a. TYPE OF WORK

DRILL ☒DEEPEN ☐PLUG BACK ☐

b. TYPE OF WELL

OIL
WELL ☒GAS
WELL ☐

OTHER

SINGLE
ZONE ☒MULTIPLE
ZONE ☐

2. NAME OF OPERATOR

Tesoro Petroleum Corporation

3. ADDRESS OF OPERATOR

1776 Lincoln St. Suite 1012, Denver, Colorado 80203

4. LOCATION OF WELL (Report location clearly and in accordance with any State requirements.)*

At surface

330' FNL & 450' FWL (NW/4, NW/4)

At proposed prod. zone

Same

14. DISTANCE IN MILES AND DIRECTION FROM NEAREST TOWN OR POST OFFICE*

1 3/4 miles ESE Hospah, New Mexico

15. DISTANCE FROM PROPOSED*

LOCATION TO NEAREST
PROPERTY OR LEASE LINE, FT.
(Also to nearest drlg. unit line, if any)

330'

16. NO. OF ACRES IN LEASE

551.94±

17. NO. OF ACRES ASSIGNED
TO THIS WELL

40

18. DISTANCE FROM PROPOSED LOCATION*

TO NEAREST WELL, DRILLING, COMPLETED,
OR APPLIED FOR, ON THIS LEASE, FT.

660'

19. PROPOSED DEPTH

1650'

20. ROTARY OR CABLE TOOLS

Rotary

21. ELEVATIONS (Show whether DF, RT, GR, etc.)

GR 6919

23.

PROPOSED CASING AND CEMENTING PROGRAM

SIZE OF HOLE	SIZE OF CASING	WEIGHT PER FOOT	SETTING DEPTH	QUANTITY OF CEMENT*
12 1/4"	8 5/8"	24#	100'	100 Sx. Circ.
7 7/8"	5 1/2"	14 & 15.5#	1650'	100 Sx.

Tesoro proposes to drill a 12 1/4" hole to 100'; run 8 5/8" OD casing and cement to surface. A 7 7/8" OD hole will then be drilled through the 8 5/8" casing to a TD of approx. 1650'. An oil string of 5 1/2" OD casing will be set and cemented with 100 Sx. The 5 1/2" csq. will be tested to 800 psi for 30 minutes. Completion will consist of logging and perforating the porous Upper Hospah interval then swab testing. If the well proves commercially oil productive; pumping equipment will be installed and the well placed on production.

RECEIVED

JUL 30 1974

OIL CON. COM.
DIST. 3

RECEIVED

JUL 22 1974

U.S. GEOLOGICAL SURVEY
FARMINGTON, N.M.

IN ABOVE SPACE DESCRIBE PROPOSED PROGRAM: If proposal is to deepen or plug back, give pertinent data on present productive zone and proposed new productive zone. If proposal is to drill or deepen directionally, give pertinent data on subsurface locations and measured and true vertical depths. Give blowout preventer program, if any.

24.

SIGNED

L. Charles Marguier

TITLE

District Engineer

DATE

7/17/74

(This space for Federal or State office use)

PERMIT NO.

APPROVAL DATE

APPROVED BY

ga

TITLE

CONDITIONS OF APPROVAL, IF ANY:

*See Instructions On Reverse Side

NEW MEXICO OIL CONSERVATION COMMISSION
WELL LOCATION AND ACREAGE DEDICATION PLAT

Form C-102
Supersedes C-128
Effective 1-1-65

All distances must be from the outer boundaries of the Section.

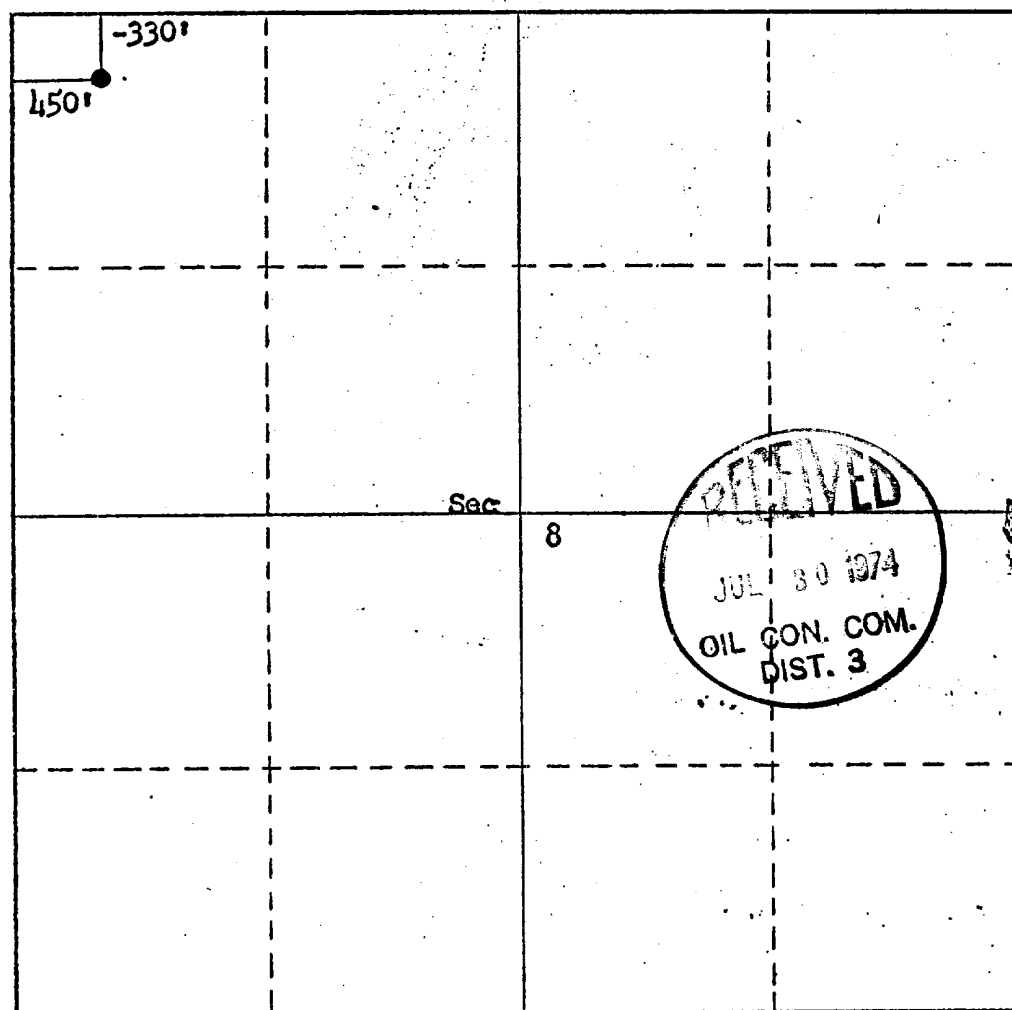
Operator Tesoro Petroleum Corp.			Lease Hansen		Well No. 26
Unit Letter D	Section 8	Township 17N	Range 8W	County McKinley	
Actual Footage Location of Well: 330 feet from the North line and 450 feet from the West line					
Ground Level Elev. 6919	Producing Formation Upper Hospah Sand		Pool Upper Hospah South		Dedicated Acreage 40 Acres

1. Outline the acreage dedicated to the subject well by colored pencil or hatchure marks on the plat below.
2. If more than one lease is dedicated to the well, outline each and identify the ownership thereof (both as to working interest and royalty).
3. If more than one lease of different ownership is dedicated to the well, have the interests of all owners been consolidated by communitization, unitization, force-pooling, etc?

☐ Yes ☐ No If answer is "yes," type of consolidation _____

If answer is "no," list the owners and tract descriptions which have actually been consolidated. (Use reverse side of this form if necessary.) _____

No allowable will be assigned to the well until all interests have been consolidated (by communitization, unitization, forced-pooling, or otherwise) or until a non-standard unit, eliminating such interests, has been approved by the Commission.



CERTIFICATION

I hereby certify that the information contained herein is true and complete to the best of my knowledge and belief.

Name L. C. Mangrum

Position District Engineer

Company Tesoro Petroleum Corp.

Date July 18, 1974

I hereby certify that the well location shown on this plat was plotted from field notes of actual surveys made by me or under my supervision, and that the same is true and correct to the best of my knowledge and belief.

Date Surveyed July 14, 1974

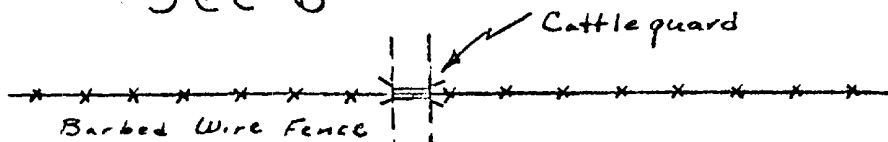
Registered Professional Engineer and/or Land Surveyor

Fred B. Kett

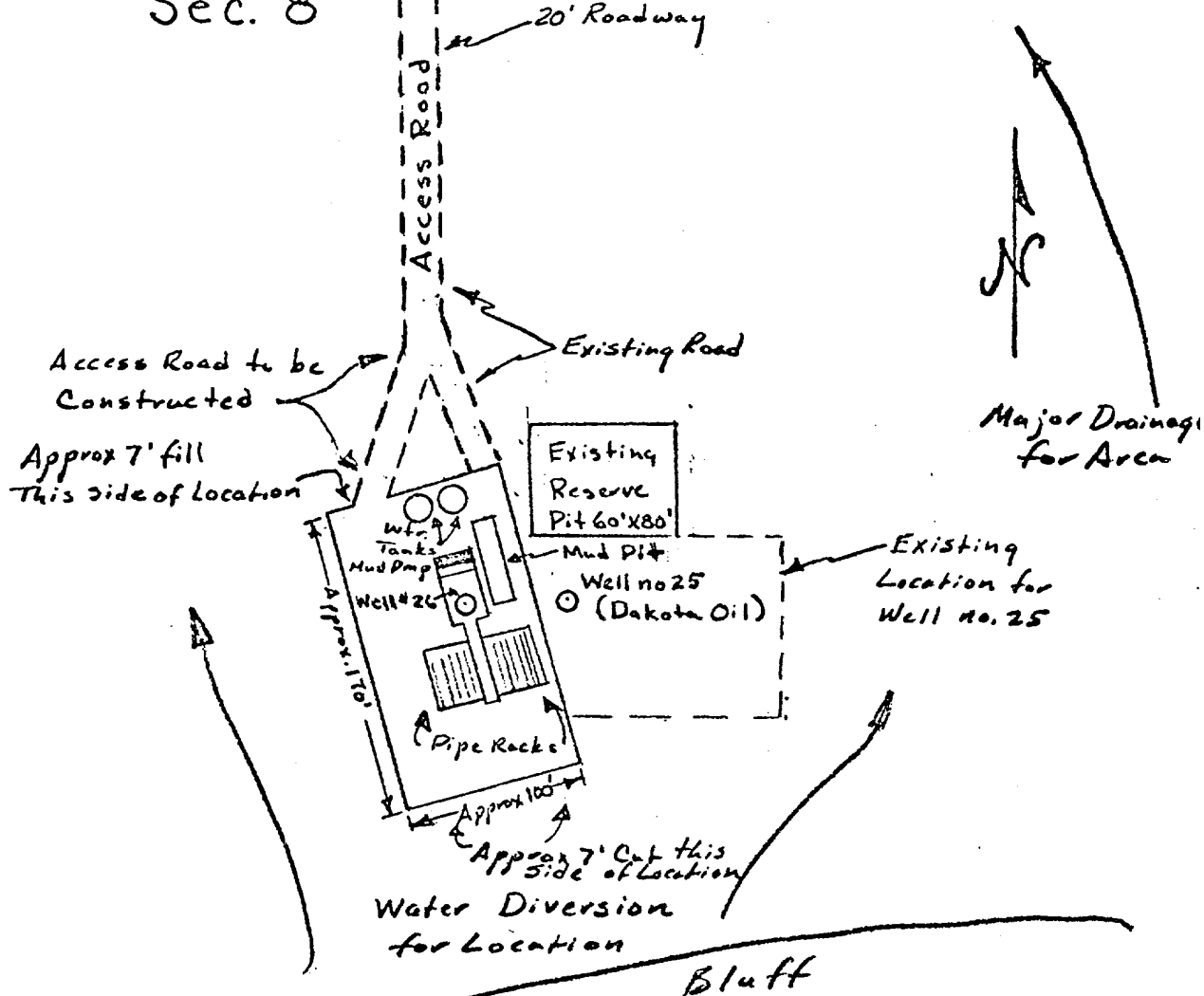
Certificate No. 3950

0 330 660 990 1320 1650 1980 2310 2640 2970 3300 3630 3960 4290 4620 4950 5280 5610 5940 6270 6600 6930 7260 7590 7920 8250 8580 8910 9240 9570 9900

(Sec 6



Sec. 8



DRILLING LOCATION PLAT

Tesoro Petroleum Corporation
Hanson Well No. 26
330' FNL & 450' FWL
Sec., 8, T17N, R8W
McKinley County, New Mexico
Scale 1" = 100' approximately
LCM 7/18/74

UNITED STATES
DEPARTMENT OF THE INTERIOR
GEOLOGICAL SURVEY

