

NO. OF COPIES RECEIVED	5
DISTRIBUTION	
SANTA FE	/
FILE	/
U.S.G.S.	/
LAND OFFICE	/
OPERATOR	/

NEW MEXICO OIL CONSERVATION COMMISSION

30-031-20430

Form C-101  
Revised 1-1-65

5A. Indicate Type of Lease	
STATE <input type="checkbox"/>	FEE <input checked="" type="checkbox"/>
5. State Oil & Gas Lease No.	

APPLICATION FOR PERMIT TO DRILL, DEEPEN, OR PLUG BACK

1a. Type of Work		7. Unit Agreement Name	
b. Type of Well OIL WELL <input checked="" type="checkbox"/> GAS WELL <input type="checkbox"/> OTHER <input type="checkbox"/>		8. Farm or Lease Name SFPRR Co.	
2. Name of Operator Northern Minerals, Inc.		9. Well No. 17	
3. Address of Operator P. O. Box 2182, Santa Fe, New Mexico 87501		10. Field and Pool, or Wildcat Miguel Creek- Gallup	
4. Location of Well UNIT LETTER J LOCATED 2930 FEET FROM THE North LINE 1650 East 29 16N 6W AND FEET FROM THE LINE OF SEC. TWP. RGE. NMPM		12. County McKinley	
19. Proposed Depth 800'		19A. Formation Hospah	
20. Rotary or C.T. Rotary		21. Elevations (Show whether DF, RT, etc.) 6493' G. L.	
21A. Kind & Status Plug. Bond Statewide		21B. Drilling Contractor Four Corners	
22. Approx. Date Work will start Upon Approval			

PROPOSED CASING AND CEMENT PROGRAM

SIZE OF HOLE	SIZE OF CASING	WEIGHT PER FOOT	SETTING DEPTH	SACKS OF CEMENT	EST. TOP
6 1/2"	4-3/4"	16#	800'	Suff. to Circulate	



APPROVAL VALID  
FOR 90 DAYS UNLESS  
DRILLING COMMENCED,

EXPIRES 4-22-75

IN ABOVE SPACE DESCRIBE PROPOSED PROGRAM: IF PROPOSAL IS TO DEEPEN OR PLUG BACK, GIVE DATA ON PRESENT PRODUCTIVE ZONE AND PROPOSED NEW PRODUCTIVE ZONE. GIVE BLOWOUT PREVENTER PROGRAM, IF ANY.

I hereby certify that the information above is true and complete to the best of my knowledge and belief.

Signed Lloyd Davidson Title President Date 1-9-75

(This space for State Use)

APPROVED BY George Clemif TITLE SUPERVISOR DIST. #3 DATE 1-22-75

CONDITIONS OF APPROVAL, IF ANY:

Held PC-104 for non standard location approval prior to production

**NEW MEXICO OIL CONSERVATION COMMISSION  
WELL LOCATION AND ACREAGE DEDICATION PLAT**

Form C-102  
Supersedes C-128  
Effective 1-1-65

All distances must be from the outer boundaries of the Section.

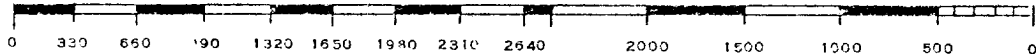
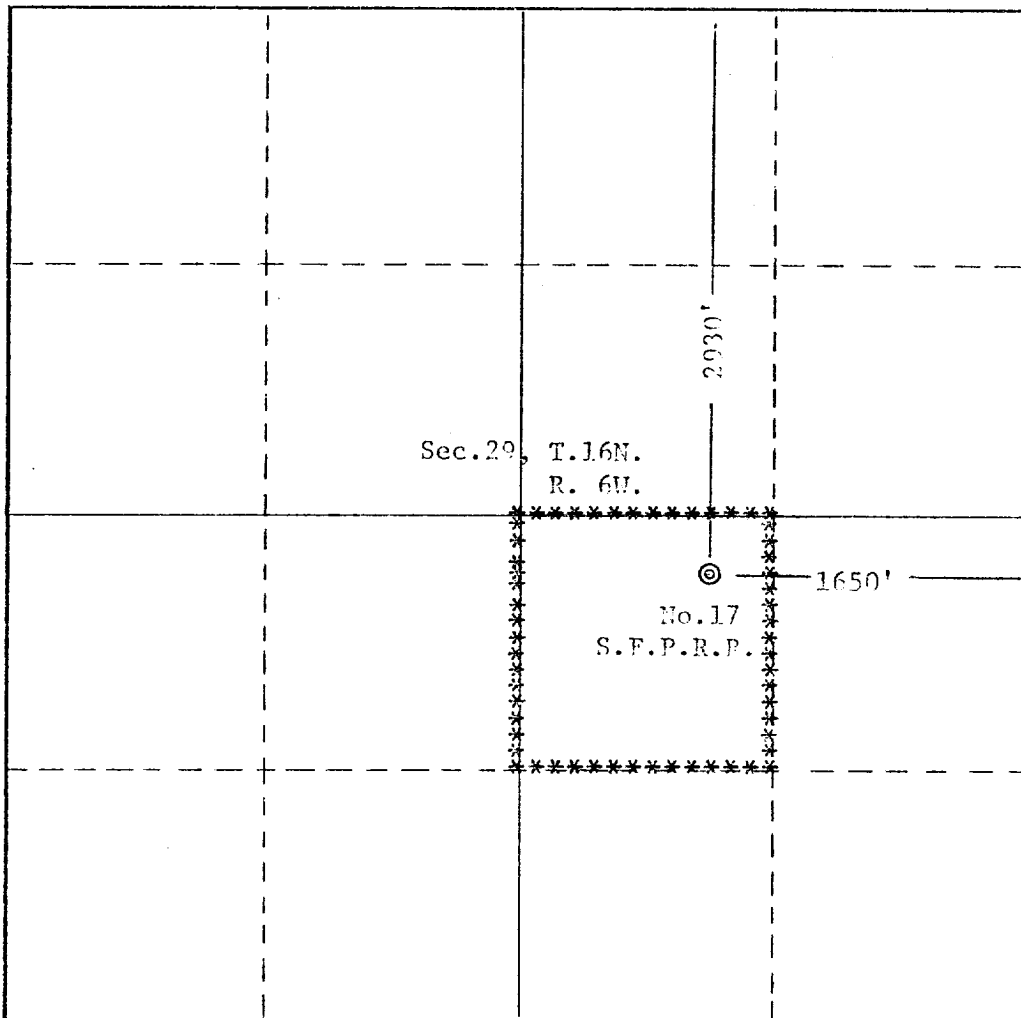
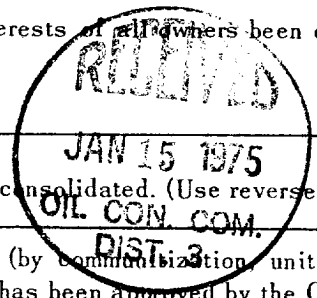
Operator <b>NORTHERN MINERALS INC.</b>			Lease <b>SFPRR Co.</b>		Well No. <b>17</b>
Unit Letter <b>J</b>	Section <b>29</b>	Township <b>16 North</b>	Range <b>6 West</b>	County <b>McKinley</b>	
Actual Footage Location of Well: <b>2930</b> feet from the <b>north</b> line and <b>1650</b> feet from the <b>east</b> line					
Ground Level Elev: <b>6493</b>	Producing Formation <b>Hospah</b>		Pool <b>Miguel Creek - Gallup</b>		Dedicated Acreage: <b>40</b> Acres

1. Outline the acreage dedicated to the subject well by colored pencil or hachure marks on the plat below.
2. If more than one lease is dedicated to the well, outline each and identify the ownership thereof (both as to working interest and royalty).
3. If more than one lease of different ownership is dedicated to the well, have the interests of all owners been consolidated by communitization, unitization, force-pooling, etc?

☐ Yes   ☐ No   If answer is "yes," type of consolidation \_\_\_\_\_

If answer is "no," list the owners and tract descriptions which have actually been consolidated. (Use reverse side of this form if necessary.) \_\_\_\_\_

No allowable will be assigned to the well until all interests have been consolidated (by communitization, unitization, forced-pooling, or otherwise) or until a non-standard unit, eliminating such interests, has been approved by the Commission.



<b>CERTIFICATION</b>	
I hereby certify that the information contained herein is true and complete to the best of my knowledge and belief.	
Name	<i>Lloyd Davidson</i> <b>Lloyd Davidson</b>
Position	<b>President</b>
Company	<b>Northern Minerals, Inc</b>
Date	<b>1-8-75</b>
I hereby certify that the well location shown on this plat was plotted from field notes of actual surveys made by me or under my supervision, and that the same is true and correct to the best of my knowledge and belief.	
Date Surveyed	<b>October 29, 1974</b>
Registered Professional Engineer and/or Land Surveyor <i>Fred S. Davidson</i>	
Certificate No.	<b>2031</b>