

UNITED STATES
DEPARTMENT OF THE INTERIOR
GEOLOGICAL SURVEY

30-031-20435

APPLICATION FOR PERMIT TO DRILL, DEEPEN, OR PLUG BACK

1a. TYPE OF WORK

DRILL ☐DEEPEN ☐PLUG BACK ☐

b. TYPE OF WELL

OIL
WELL ☐GAS
WELL ☐

OTHER

SINGLE
ZONE ☐MULTIPLE
ZONE ☐

2. NAME OF OPERATOR

Basin Fuels, Incorporated (It 505-325-1702)

3. ADDRESS OF OPERATOR

152 Petroleum Center Bldg. Farmington, New Mexico 87401

4. LOCATION OF WELL (Report location clearly and in accordance with any State requirements)

At surface

660' PSL, 1900' PSL

At proposed prod. zone

same

14. DISTANCE IN MILES AND DIRECTION FROM NEAREST TOWN OR POST OFFICE

20 miles Counselor, N. M., 5 miles west of Arco, Idaho

15. DISTANCE FROM PROPOSED*

LOCATION TO NEAREST
PROPERTY OR LEASE LINE, FT.
(Also to nearest drig. unit line, if any)

660'

18. DISTANCE FROM PROPOSED LOCATION*
TO NEAREST WELL, DRILLING, COMPLETED,
OR APPLIED FOR, ON THIS LEASE, FT.

one

16. NO. OF FEET IN LEASE

900

19. PROPOSED DEPTH

3000' Point Lookout

17. NO. OF ACRES ASSIGNED
TO THIS WELL

40

20. ROTARY OR CABLE TOOLS

Rotary

21. ELEVATIONS (Show whether DF, RT, GR, etc.)

6742 Ground

22. APPROX. DATE WORK WILL START*

March 31, 1975

23.

PROPOSED CASING AND CEMENTING PROGRAM

SIZE OF HOLE	SIZE OF CASING	WEIGHT PER FOOT	SETTING DEPTH	QUANTITY OF CEMENT
11	8-5/8	24	100	100 SK
7-7/8	4-1/2	9.50	3000	150 SK

Set 8-5/8 surface casing at 100' and circulate cement.
Drill to 3000', run logs, if production is indicated,
set and cement 4-1/2" production casing with 150 sacks cement.
Gun perforate, fracture treat in a completion attempt.
If non-commercial, will plug and abandon in accordance with
U. S. G. S. abandonment instructions and restore surface.

MAR 19 1975

IN ABOVE SPACE DESCRIBE PROPOSED PROGRAM: If proposal is to deepen or plug back, give data on present productive zone and proposed new productive zone. If proposal is to drill or deepen directionally, give pertinent data on subsurface locations and measured and true vertical depths. Give blowout preventer program, if any.

24.

Original Signed By:

SIGNED

CLAUDE C. KENNEDY

TITLE

Drilling Supt.

DATE

2-10-1975

(This space for Federal or State office use)

PERMIT NO.

APPROVAL DATE

APPROVED BY

TITLE

DATE

CONDITIONS OF APPROVAL, IF ANY:

**NEW MEXICO OIL CONSERVATION COMMISSION
WELL LOCATION AND ACREAGE DEDICATION PLAT**

Form C-102
Supersedes C-128
Effective 1-1-65

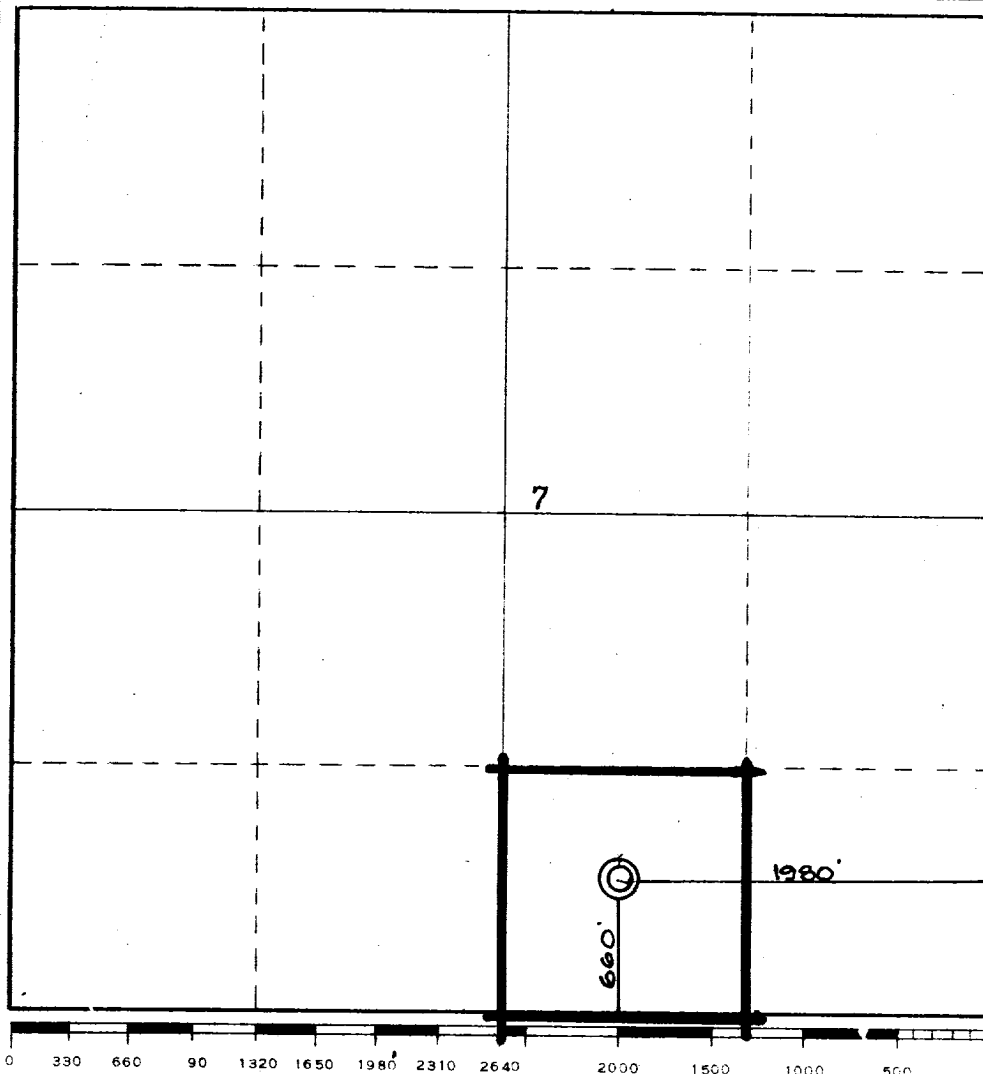
All distances must be from the outer boundaries of the Section

Operator BASIN FUELD, INC.			Lease Altek		Well No. 1
Unit Letter 0	Section 7	Township 20 NORTH	Range 5 WEST	County MCKINLEY	
Actual Footage Location of Well: <div style="display: flex; justify-content: space-between;"> 660 feet from the SOUTH line and 1980 feet from the EAST line </div>					
Ground Level Elev. 6742	Producing Formation Point Lookout MV		Pool Wildcat	Dedicated Acreage: 40 Acres	

1. Outline the acreage dedicated to the subject well by colored pencil or hachure marks on the plat below.
2. If more than one lease is dedicated to the well, outline each and identify the ownership thereof (both as to working interest and royalty).
3. If more than one lease of different ownership is dedicated to the well, have the interests of all owners been consolidated by communitization, unitization, force-pooling, etc?
☐ Yes ☐ No If answer is "yes," type of consolidation _____

If answer is "no," list the owners and tract descriptions which have actually been consolidated. (Use reverse side of this form if necessary.) _____

No allowable will be assigned to the well until all interests have been consolidated (by communitization, unitization, forced-pooling, or otherwise) or until a non-standard unit, eliminating such interests, has been approved by the Commission.



CERTIFICATION

I hereby certify that the information contained herein is true and complete to the best of my knowledge and belief.

Original Signed By:

CLAUDE C. KENNEDY

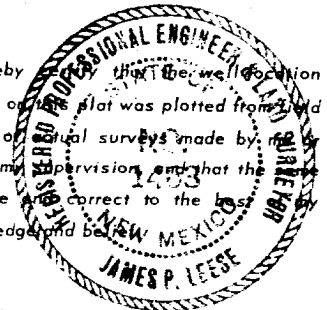
Claude C. Kennedy

Drilling Supt.

Basin Fuels, Incorporated

Date **2-10-1975**

I hereby certify that the well location shown on this plat was plotted from field notes of actual surveys made by me or under my supervision, and that the same is true and correct to the best of my knowledge and belief.



Date Surveyed **7 February 1975**

Registered Professional Engineer and/or Land Surveyor

James P. Leese
James P. Leese

Certificate No. **1463**

DEVELOPMENT PLAN FOR SURFACE RESUME

COMPANY:

Basin Fuels, Incorporated
152 Petroleum Center Bldg.
Farmington, New Mexico 87401

WELL:

1. 1101
2. 1101, 1102, 1103,
3. 1104, 1105, 1106,
4. 1107, 1108, 1109, . . .

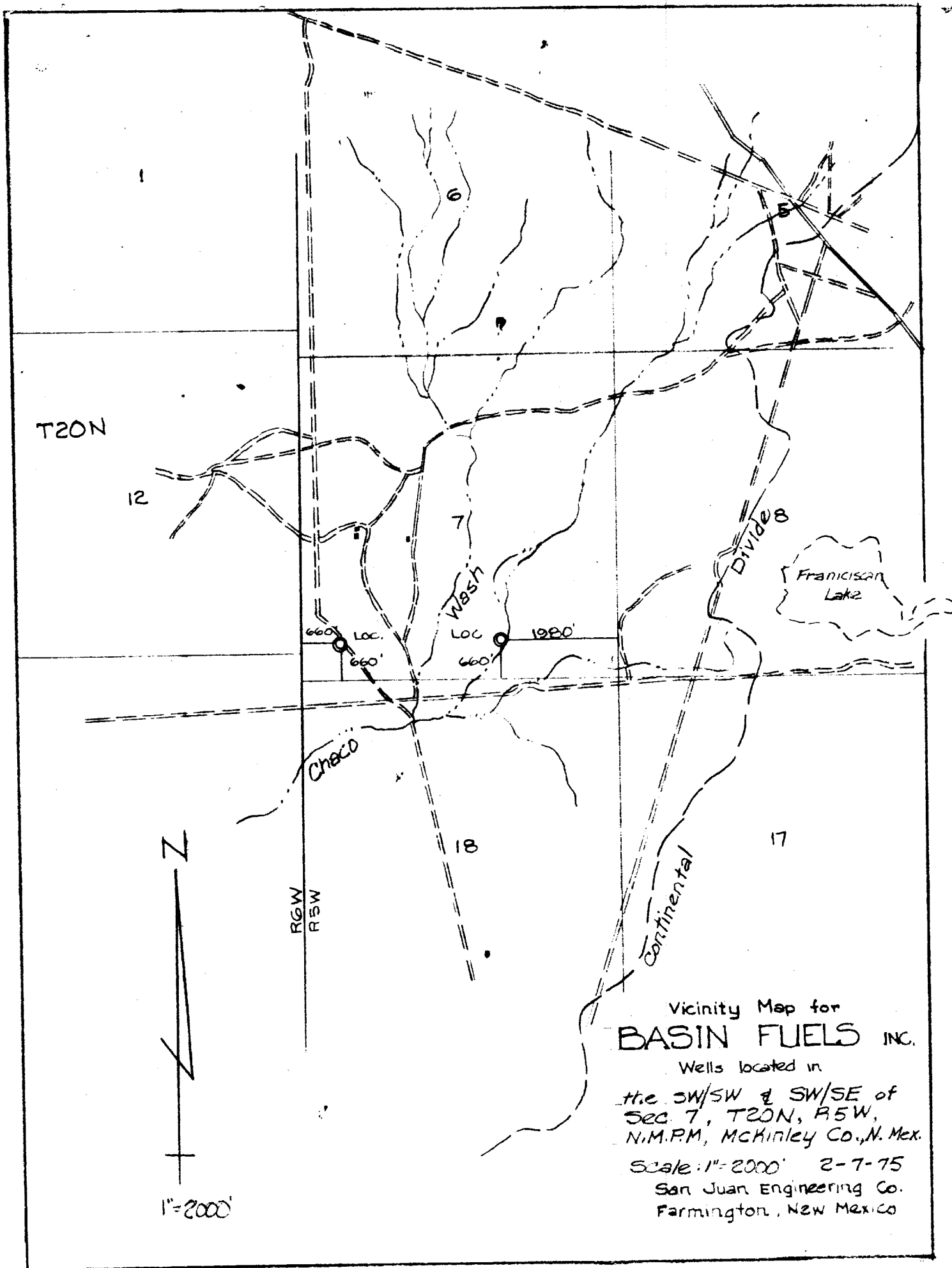
1. Location and vicinity map, San Juan Engineering Company.
Exit Highway 44: 19 miles Northwest of Lease. Directions to site:
At Counselor, N. M.--Turn right, go 4.5 miles to cross road,
Left @ At cross road, on Ojo Encino road go 14.5 miles,
At this point, trail off main road, go south 2 miles to site.
2. No roads required.
Only slight improvement of existing trail will be required.
3. A Plug and Abandon well located:
Unit P, Section 12, T20N, R6W. Davis Oil #1 McCollum. (1957)
4. Roads shown on vicinity plat & location plat.
5. In the event of production, tank battery to be installed on location.
6. Water to come from private source at Ojo Encino School.
7. All trash and waste material to be placed in mud pit and covered.
No other surface to be used.
8. None
9. None
10. Rig layout shown on plat attached. Area is flat with sage brush.
Drilling pad to be compacted.
11. Upon completion of drilling or producing operation, the surface
will be leveled and restored in accordance with instructions from
appropriate Governmental Agency.
12. Area is flat, covered with sage brush. Drill site to be compacted,
and upon completion of operation will be leveled and restored.

Field representative to contact:

Claude C. Kennedy
Drilling Supt.
4949 San Pedro, N. E., Apt. 47
Albuquerque, New Mexico 87109
Phone: (505) 883-9624

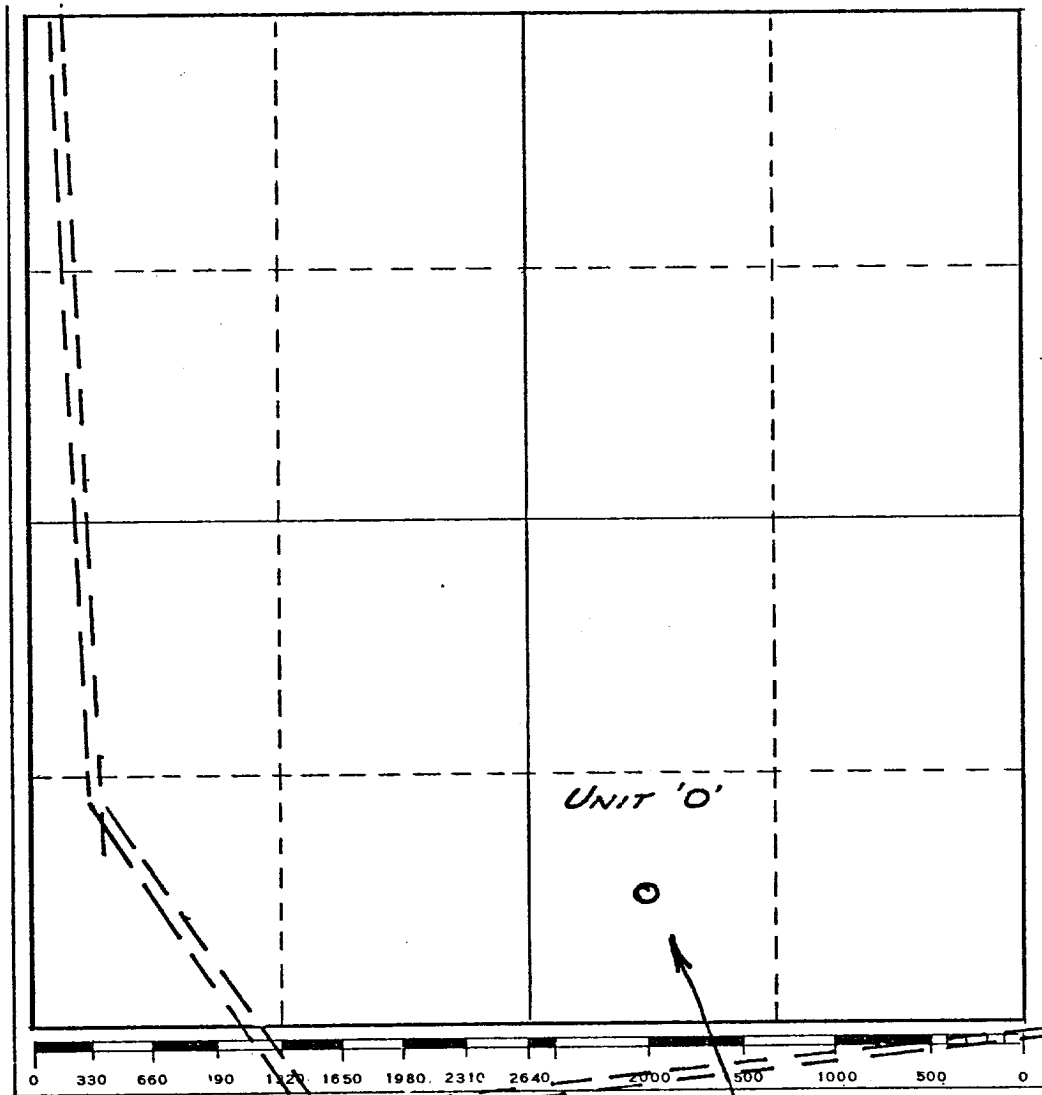
Or

Basin Fuels, Inc.
Joel B. Burr, Jr., President
152 Petroleum Center Bldg.
Farmington, New Mexico 87401
Phone: (505) 325-1702



Section 7, T20N, R5W,
McKinley County, New Mexico

TRAIL EXIT
4 MILES WEST
OLD ENCINO SCHOOL



N

TRAIL EXIT MAIN ROAD 3 MILES WEST OLD ENCINO

Drilling Rig Layout and Position:

