

UNITED STATES
DEPARTMENT OF THE INTERIOR
GEOLOGICAL SURVEY

30-031-20447

APPLICATION FOR PERMIT TO DRILL, DEEPEN, OR PLUG BACK

1a. TYPE OF WORK

DRILL ☒DEEPEN ☐PLUG BACK ☐

b. TYPE OF WELL

OIL
WELL ☒GAS
WELL ☐OTHER ☐SINGLE
ZONE ☐MULTIPLE
ZONE ☐

2. NAME OF OPERATOR

Tesoro Petroleum Corporation

3. ADDRESS OF OPERATOR

404 Fidelity Plaza
Oklahoma City, Oklahoma 73102

4. LOCATION OF WELL (Report location clearly and in accordance with any State requirements.)

At surface

2460' FWL & 2410' FSL

At proposed prod. zone

Same as above

14. DISTANCE IN MILES AND DIRECTION FROM NEAREST TOWN OR POST OFFICE*

7 MI TO WHITEHORSE STORE

15. DISTANCE FROM PROPOSED*

LOCATION TO NEAREST
PROPERTY OR LEASE LINE, FT.
(Also to nearest drlg. unit line, if any) 500'

18. DISTANCE FROM PROPOSED LOCATION*

TO NEAREST WELL, DRILLING, COMPLETED,
OR APPLIED FOR, ON THIS LEASE, FT. 850'

16. NO. OF ACRES IN LEASE

551.94

19. PROPOSED DEPTH

1620

17. NO. OF ACRES ASSIGNED
TO THIS WELL

40

20. ROTARY OR CABLE TOOLS

Rotary

21. ELEVATIONS (Show whether DF, RT, GR, etc.)

6902 GL

22. APPROX. DATE WORK WILL START*

May 12, 1975

23.

PROPOSED CASING AND CEMENTING PROGRAM

SIZE OF HOLE	SIZE OF CASING	WEIGHT PER FOOT	SETTING DEPTH	QUANTITY OF CEMENT
12 1/4	8 5/8	20	100'	100 sx
7 7/8	5 1/2	15.5	1620'	200 sx

The proposed Development well will be drilled to a TD of 1620' to test the Lower Hospah Formation. All potential hydrocarbon zones will be adequately evaluated.

Adequate blow out prevention measures will be observed at all times.

This well joint with 1X, 11 & 12 Hanson
all in Unit V

MAY 9 1975

U. S. GEOLOGICAL SURVEY

IN ABOVE SPACE DESCRIBE PROPOSED PROGRAM: If proposal is to deepen or plug back, give data on present productive zone and proposed new productive zone. If proposal is to drill or deepen directionally, give pertinent data on subsurface locations and measured and true vertical depths. Give blowout preventer program, if any.

24.

SIGNED

J. L. Tally

TITLE District Drilling Engineer DATE 5-6-75

(This space for Federal or State office use)

PERMIT NO.

APPROVAL DATE

APPROVED BY

TITLE

DATE

CONDITIONS OF APPROVAL, IF ANY:

*See Instructions On Reverse Side

TESORO PETROLEUM CORPORATION

404 FIDELITY PLAZA

405-236-1531

OKLAHOMA CITY, OKLA. 73102

J. L. TALLY

MID-CONTINENT

DISTRICT DRILLING ENGINEER

May 7, 1975



Mr. Phil McGrath
United States Geological Survey
Farmington, New Mexico 87401

Dear Sir:

The eleven point program for Tesoro's Hanson No. 30, 6-17N-8W, McKinley County, New Mexico is as follows:

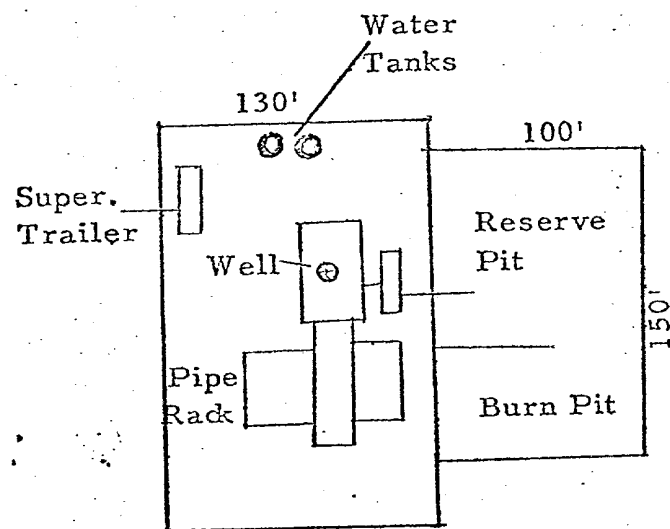
1. A map showing all existing and proposed roads in the area is attached.
2. The proposed access road will be of minimum width and approximately 150' long. Surface will be bladed native dirt and sand.
3. Lateral roads are shown on the map.
4. There are existing tank batteries and flowlines in the area.
5. Water for drilling the well will be obtained from a water supply well.
6. All waste material will be placed in the reserve pit and covered with sufficient overburden.
- 7&8. No camps or airstrips will be associated with this well.
9. Location plat is attached.
10. Upon completion or abandonment, the location will be restored using the guidelines of the BLM.
11. The topography of the area is fairly flat with no unusual environment.

Yours truly,

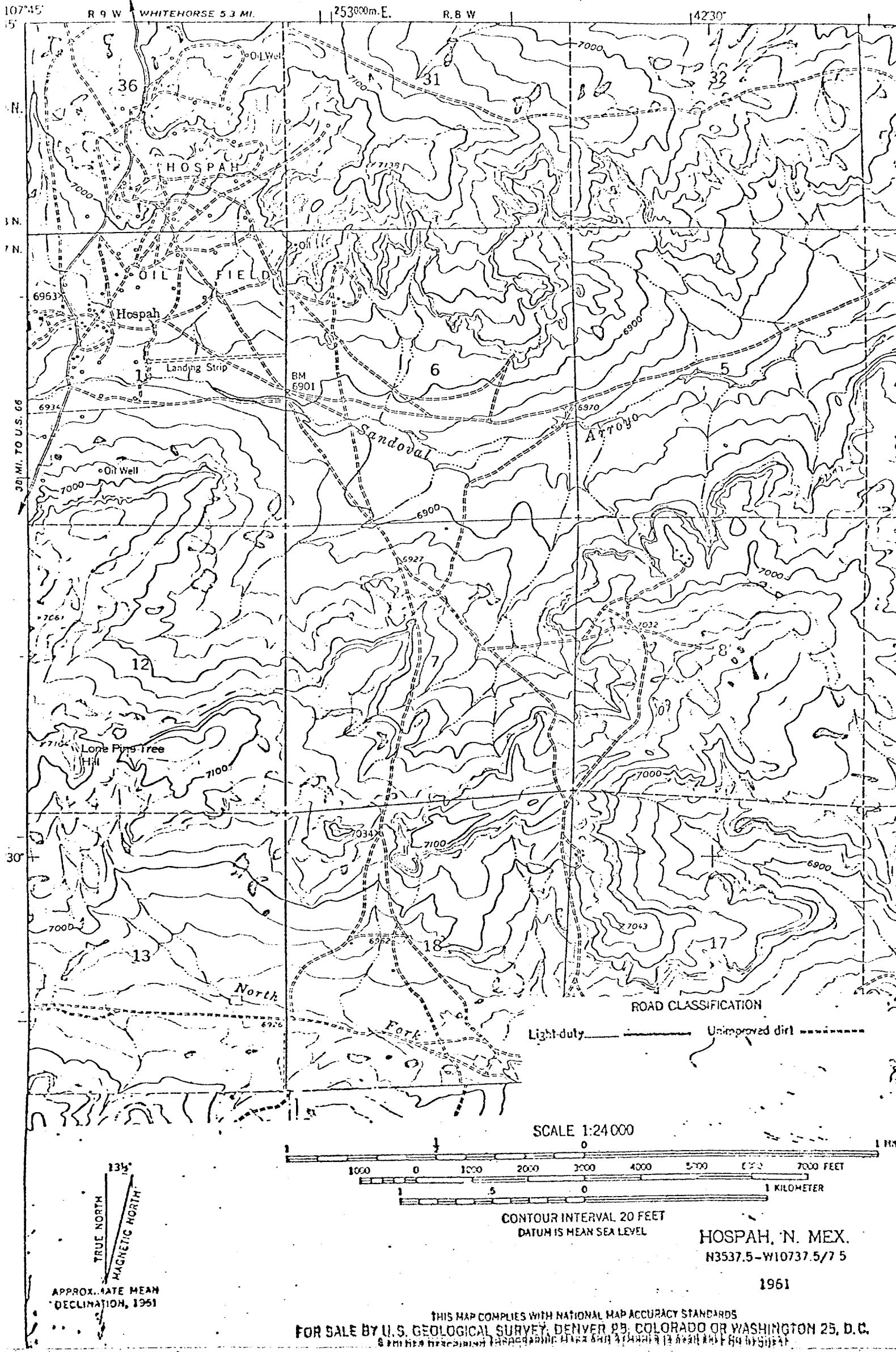
A handwritten signature in dark ink, appearing to read 'J. L. Tally', is written over the typed name.

J. L. Tally
District Drilling Engineer

JLT/sgb
Attachments



DEPARTMENT OF THE INTERIOR
GEOLOGICAL SURVEY



THIS MAP COMPLIES WITH NATIONAL MAP ACCURACY STANDARDS
FOR SALE BY U.S. GEOLOGICAL SURVEY, DENVER 25, COLORADO OR WASHINGTON 25, D.C.
8 miles from the nearest town