

UNITED STATES
DEPARTMENT OF THE INTERIOR
GEOLOGICAL SURVEY

(OTHER INFORMATION ON
reverse side)

Budget Number 12-R1420

30-031-20454

5. LEASE DESIGNATION AND SERIAL NO.

NM--7509

6. IF INDIAN, ALLOTTEE OR TRIBE NAME

7. UNIT AGREEMENT NAME

8. FARM OR LEASE NAME

Scooter

9. WELL NO.

1

10. FIELD AND POOL, OR WILDCAT

Extention

11. SEC., T., R., M., OR BLK.
AND SURVEY OR AREA

Sec. 18, T20N, R5W

12. COUNTY OR PARISH

13. STATE

McKinley

N.M.

1a. TYPE OF WORK

DRILL ☒

DEEPEN ☐

PLUG BACK ☐

b. TYPE OF WELL

OIL
WELL ☒

GAS
WELL ☐

OTHER

SINGLE
ZONE ☐

MULTIPLE
ZONE ☐

2. NAME OF OPERATOR

Basin Fuels, Incorporated (Ph 505-325-1702)

3. ADDRESS OF OPERATOR

152 Petroleum Center Bldg., Farmington, New Mexico 87401

4. LOCATION OF WELL (Report location clearly and in accordance with any State requirements.)*

At surface

660' FNL, 660' FWL

At proposed prod. zone

Same

14. DISTANCE IN MILES AND DIRECTION FROM NEAREST TOWN OR POST OFFICE*

20 miles SE Counselor, N.M. 5 miles West Ojo Encino School

15. DISTANCE FROM PROPOSED*

LOCATION TO NEAREST
PROPERTY OR LEASE LINE, FT.
(Also to nearest drlg. unit line, if any)

660'

16. NO. OF ACRES IN LEASE

2080

17. NO. OF ACRES ASSIGNED
TO THIS WELL

40

18. DISTANCE FROM PROPOSED LOCATION*

TO NEAREST WELL, DRILLING, COMPLETED,
OR APPLIED FOR, ON THIS LEASE, FT.

None

19. PROPOSED DEPTH

3000' Point Lookout

20. ROTARY OR CABLE TOOLS

Rotary

21. ELEVATIONS (Show whether DF, RT, GR, etc.)

6729 Ground

22. APPROX. DATE WORK WILL START*

6-12-1975

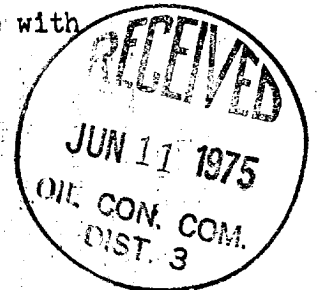
23.

PROPOSED CASING AND CEMENTING PROGRAM

SIZE OF HOLE	SIZE OF CASING	WEIGHT PER FOOT	SETTING DEPTH	QUANTITY OF CEMENT
12 1/4	8-5/8	24#	100	100 sx
7-7/8	4-1/2	9.50#	3000	150 sx

Set 8-5/8 surface casing at 100' and circulate cement.
Drill to 3000', run logs, if production is indicated,
set and cement 4-1/2 " production casing with 150 sacks cement.
Gun perforate, fracture treat in a completion attempt.
If non-commercial, will plug and abandon in accordance with
U.S.G.S. abandonment instructions and restore surface.

Original Signed By
CLAUDE C. KENNEDY



IN ABOVE SPACE DESCRIBE PROPOSED PROGRAM: If proposal is to deepen or plug back, give data on present productive zone and proposed new productive zone. If proposal is to drill or deepen directionally, give pertinent data on subsurface locations and measured and true vertical depths. Give blowout preventer program, if any.

24.

SIGNED

Claude C. Kennedy

TITLE

Drilling Supt.

DATE

6-5-1975

(This space for Federal or State office use)

PERMIT NO.

APPROVAL DATE

APPROVED BY

TITLE

DATE

CONDITIONS OF APPROVAL, IF ANY:

*See Instructions On Reverse Side

**NEW MEXICO OIL CONSERVATION COMMISSION
WELL LOCATION AND ACREAGE DEDICATION PLAT**

Form C-102
Supersedes C-128
Effective 1-1-65

All distances must be from the outer boundaries of the Section.

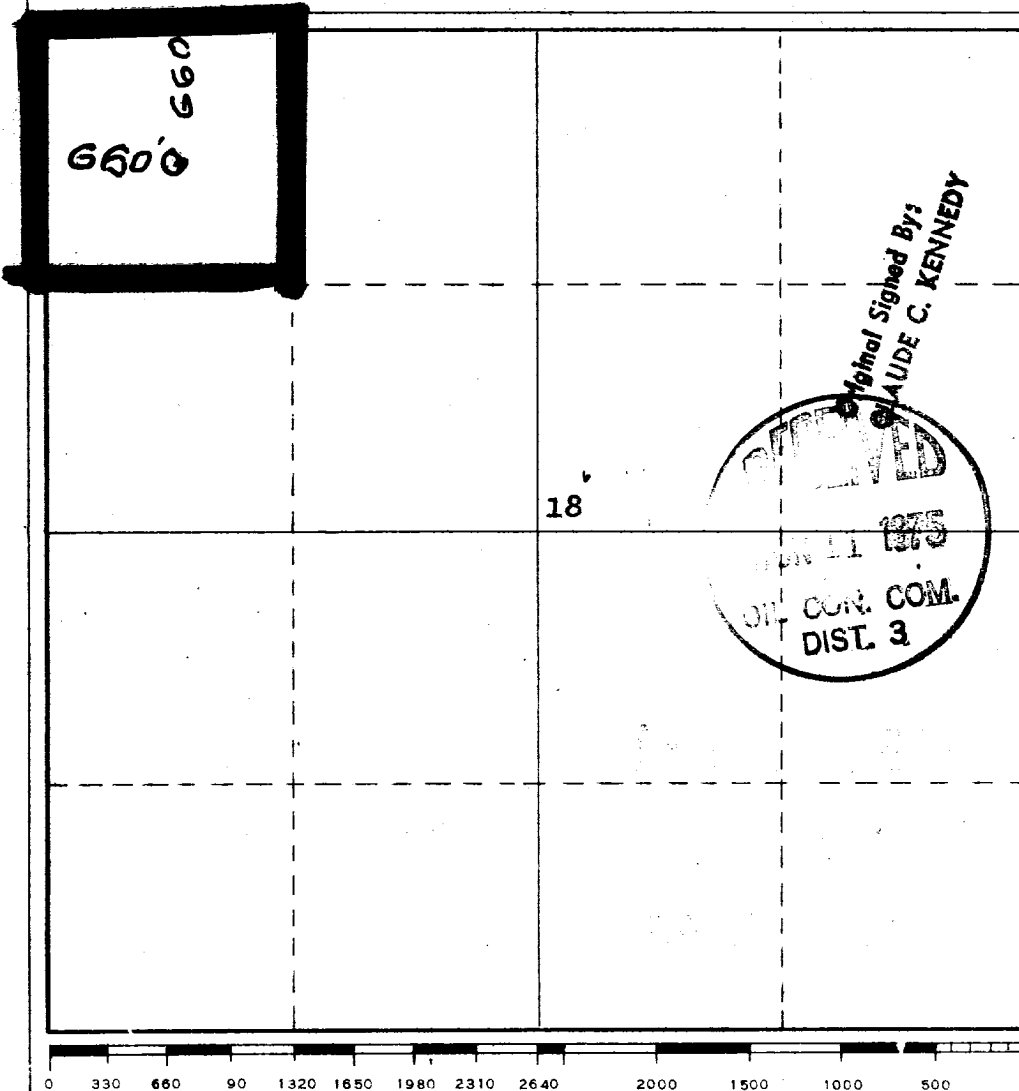
Operator BASIN FUELS, INC.			Lease SCOOTER		Well No. 1
Unit Letter D	Section 18	Township 20 NORTH	Range 5 WEST	County McKINLEY	
Actual Footage Location of Well: 660 feet from the NORTH line and 660 feet from the WEST line					
Ground Level Elev. 6729	Producing Formation HERNANDEZ	Pool WILDCAT		Dedicated Acreage: 40 Acres	

1. Outline the acreage dedicated to the subject well by colored pencil or hachure marks on the plat below.
2. If more than one lease is dedicated to the well, outline each and identify the ownership thereof (both as to working interest and royalty).
3. If more than one lease of different ownership is dedicated to the well, have the interests of all owners been consolidated by communitization, unitization, force-pooling, etc?

☐ Yes ☐ No If answer is "yes," type of consolidation _____

If answer is "no," list the owners and tract descriptions which have actually been consolidated. (Use reverse side of this form if necessary.) _____

No allowable will be assigned to the well until all interests have been consolidated (by communitization, unitization, forced-pooling, or otherwise) or until a non-standard unit, eliminating such interests, has been approved by the Commission.



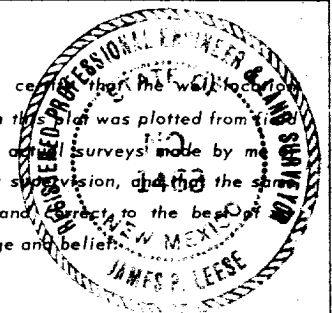
CERTIFICATION

I hereby certify that the information contained herein is true and complete to the best of my knowledge and belief.

Name
Claude C. Kennedy
Position
Drilling Supt.
Company
Basin Fuels, Inc.

Date **6-5-1975**

I hereby certify that the well location shown on this plat was plotted from the notes of actual surveys made by me under my supervision, and that the same is true and correct to the best of my knowledge and belief.



Date Surveyed
4 June 1975

Registered Professional Engineer and/or Land Surveyor

James P. Leese
James P. Leese

Certificate No.
1463

0 330 660 990 1320 1650 1980 2310 2640 2000 1500 1000 500 0

DEVELOPMENT PLAN FOR SURFACE RESUME

COMPANY:

Basin Fuels, Incorporated
152 Petroleum Center Bldg.
Farmington, New Mexico 87401

WELL:

#1 SCOOTER
660' FNL, 660' FWL
Sec. 7, T20N, R5W
McKinley, County, N.M.

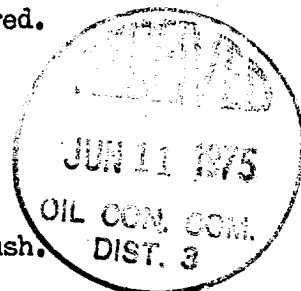
1. Location and vicinity map, San Juan Engineering Company.
Exit Highway 44: 19 miles Northwest of Lease. Directions to site:
At Counselor, N. M.--Turn right, go 4.5 miles to cross road,
Left @ cross road, on Ojo Encino road go 14.5 miles,
At this point, trail off main road, go south 2 miles to site.
2. No roads required.
Only slight improvement of existing trail will be required.
3. A Plug and Abandon well located:
Unit P, Section 12, T20N, R6W. Davis Oil #1 McCollum. (1957)
4. Roads shown on vicinity plat & location plat.
5. In the event of production, tank battery to be installed on location.
6. Water to come from private source at Ojo Encino School.
7. All trash and waste material to be placed in mud pit and covered.
No other surface to be used.
8. None
9. None
10. Rig layout shown on plat attached. Area is flat with sage brush.
Drilling pad to be compacted.
11. Upon completion of drilling or producing operation, the surface
will be leveled and restored in accordance with instructions from
appropriate Governmental Agency.
12. Area is flat, covered with sage brush. Drill site to be compacted,
and upon completion of operation will be leveled and restored.

Field representative to contact:

Claude C. Kennedy
Drilling Supt.
4949 San Pedro, N. E., Apt. 47
Albuquerque, New Mexico 87109
Phone: (505) 883-9624

Or

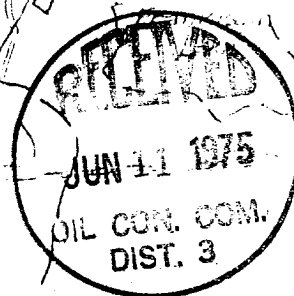
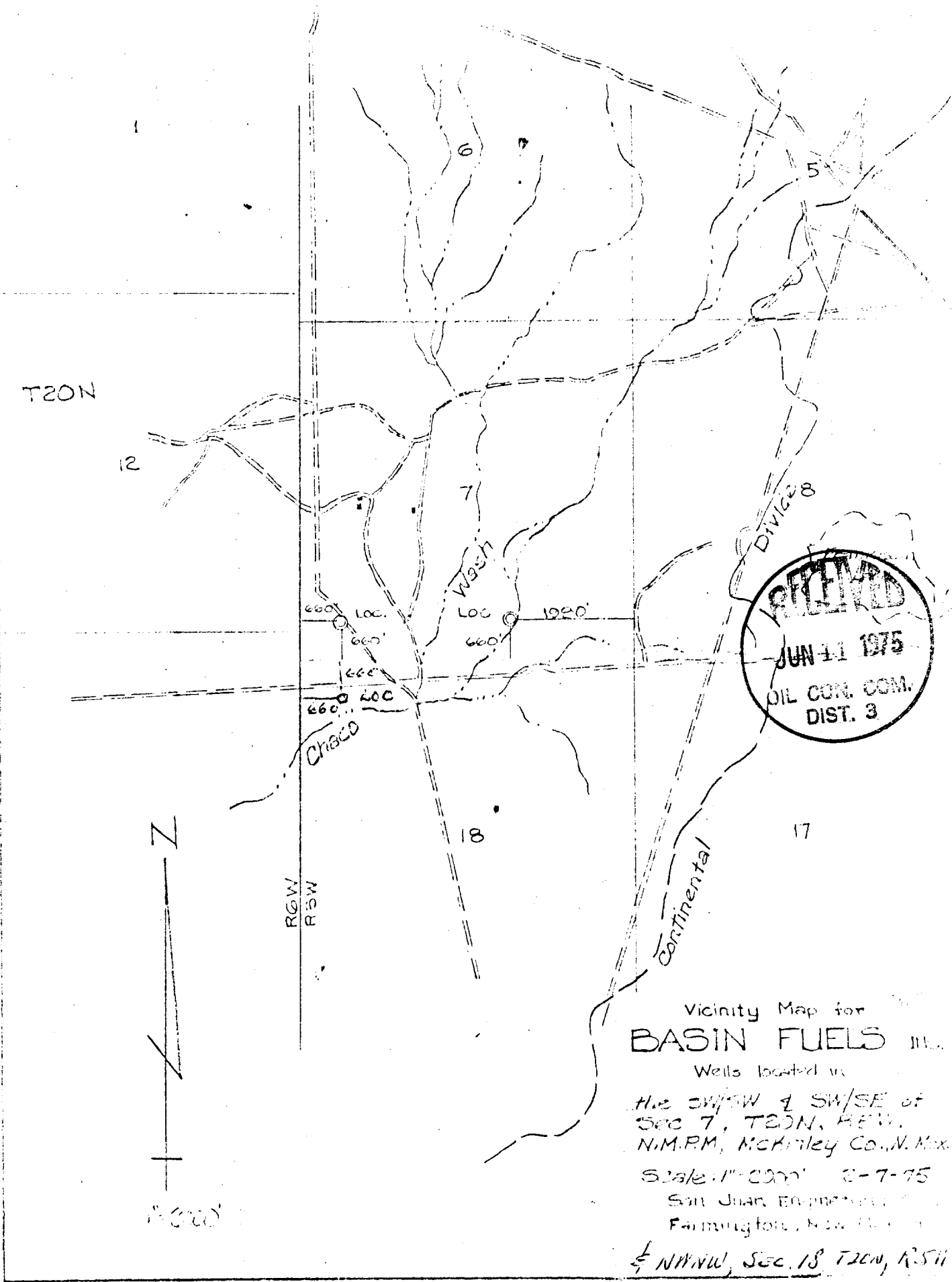
Basin Fuels, Inc.
Joel B. Burr, Jr., President
152 Petroleum Center Bldg.
Farmington, New Mexico 87401
Phone: (505) 325-1702



3. (Above) Additional Information

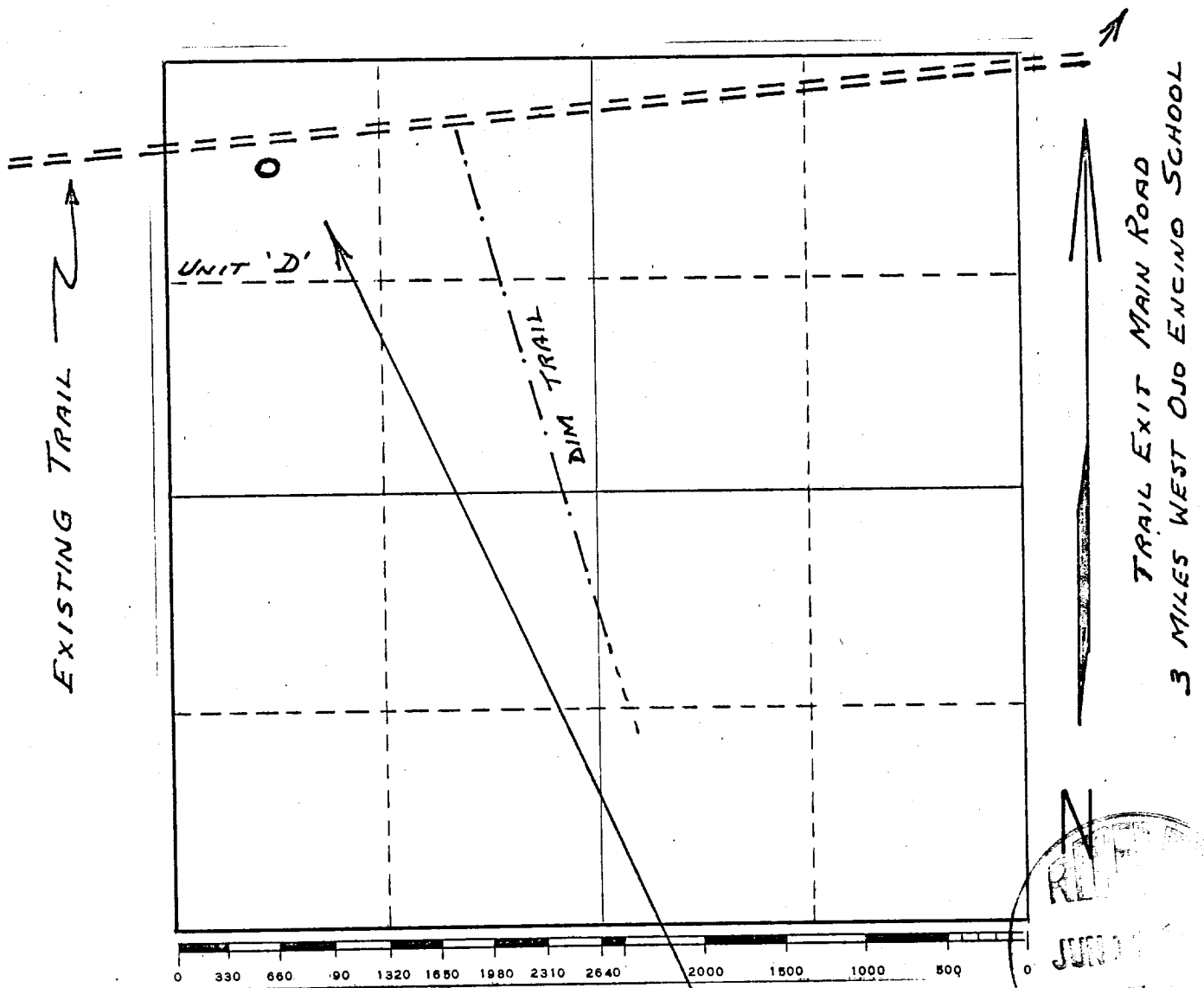
Basin Fuels, Inc. #1 Star
Unit M, Sec. 7, T20N, R5W
Oil Well, 15 BOPD, Comp. 5-17-1975

Basin Fuels, Inc. #1 Slick
Unit O, Sec. 7, T20N, R5W
Location - Wort (To drill 6-12-1975)



Vicinity Map for
BASIN FUELS, INC.
Wells located in
the SW/4 & SW/4 of
Sec 7, T20N, R5W.
N.M.P.M., McKinley Co., N. Mex.
Scale: 1" = 200' 6-7-75
San Juan Engineering Co.
Farmington, New Mexico
1/4 NW/4, Sec. 18 T20N, R5W

Section 18, T20N, R5W
McKinley County, N. M.



Drilling Rig
Position & Lay Out

