

UNITED STATES
DEPARTMENT OF THE INTERIOR
GEOLOGICAL SURVEY

APPLICATION FOR PERMIT TO DRILL, DEEPEN, OR PLUG BACK

1a. TYPE OF WORK

DRILL ☒DEEPEN ☐PLUG BACK ☐

b. TYPE OF WELL

OIL
WELL ☒GAS
WELL ☐

OTHER

SINGLE
ZONE ☒MULTIPLE
ZONE ☐

2. NAME OF OPERATOR

KIRBY EXPLORATION COMPANY

3. ADDRESS OF OPERATOR

P. O. Box 1745, Houston, Texas 77001

4. LOCATION OF WELL (Report location clearly and in accordance with any State requirements.*)

At surface

990' FSL & 2166' FWL

At proposed prod. zone

Same

14. DISTANCE IN MILES AND DIRECTION FROM NEAREST TOWN OR POST OFFICE*

1 mile Southeast of Pueblo Pintado School

15. DISTANCE FROM PROPOSED*

LOCATION TO NEAREST
PROPERTY OR LEASE LINE, FT.
(Also to nearest drlg. unit line, if any)

990'

18. DISTANCE FROM PROPOSED LOCATION*
TO NEAREST WELL, DRILLING, COMPLETED,
OR APPLIED FOR, ON THIS LEASE, FT.

None

16. NO. OF ACRES IN LEASE

640

17. NO. OF ACRES ASSIGNED
TO THIS WELL

40

19. PROPOSED DEPTH

5500

20. ROTARY OR CABLE TOOLS

Rotary

21. ELEVATIONS (Show whether DF, RT, GR, etc.)

6544 GR

22. APPROX. DATE WORK WILL START*

11-17-75

23.

PROPOSED CASING AND CEMENTING PROGRAM

SIZE OF HOLE	SIZE OF CASING	WEIGHT PER FOOT	SETTING DEPTH	QUANTITY OF CEMENT
12 1/4	8 5/8	24.0	200	150 sacks
7 7/8	5 1/2	15.5	5500	300 sacks

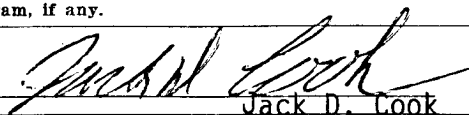
Move in rotary tools. Set 8 5/8" casing @ 200 feet & cement with 150 sacks. Drill 7 7/8" hole to 5500. Run open hole logs. If commercial production is indicated 5 1/2" casing will be set @ 5500 feet and cemented with 300 sacks. If well is non-commercial, same will be plugged & abandoned in accordance with U. S. G. S. specifications.

NOV 17 1975

IN ABOVE SPACE DESCRIBE PROPOSED PROGRAM: If proposal is to deepen or plug back, give data on present productive zone and proposed new productive zone. If proposal is to drill or deepen directionally, give pertinent data on subsurface locations and measured and true vertical depths. Give blowout preventer program, if any.

24.

SIGNED


Jack D. Cook

TITLE

Agent

DATE

11-14-75

(This space for Federal or State office use)

PERMIT NO.

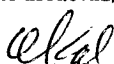
APPROVAL DATE

APPROVED BY

TITLE

DATE

CONDITIONS OF APPROVAL, IF ANY:



*See Instructions On Reverse Side

NEW MEXICO OIL CONSERVATION COMMISSION
WELL LOCATION AND ACREAGE DEDICATION PLAT

Form O-102
Supersedes C-128
Effective 1-1-65

All distances must be from the outer boundaries of the Section.

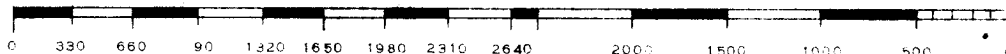
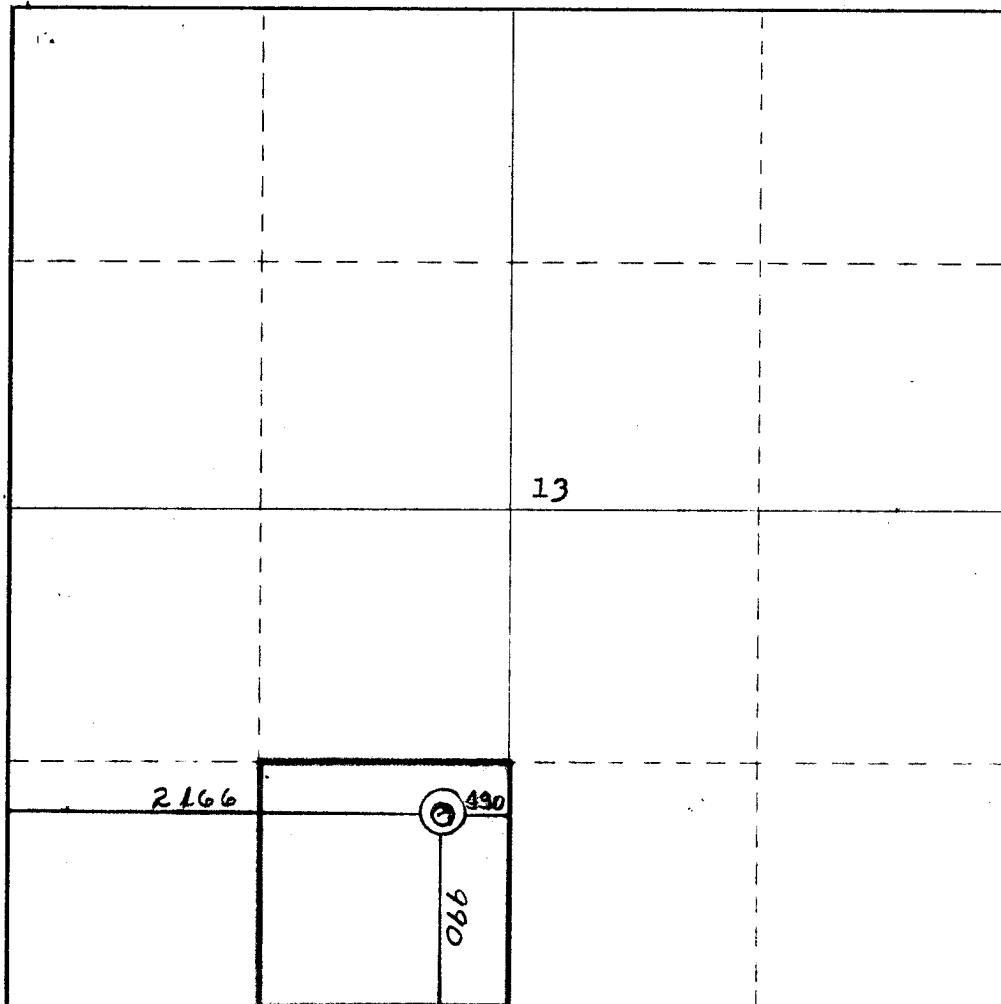
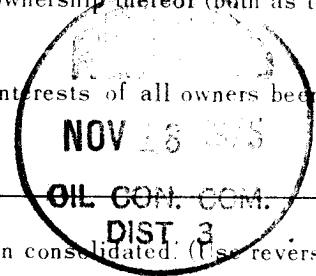
Operator KIRBY EXPLORATION CO.,			Lease Chaco Monument		Well No. # 1
Unit Letter N	Section 13	Township 20 NORTH	Range 8 WEST	County McKINLEY	
Actual Footage Location of Well: 2166 feet from the WEST line and 990 feet from the SOUTH line					
Ground Level Elev. 6544	Producing Formation Entrada	Pool Wildcat	Dedicated Acreage 40 Acres		

1. Outline the acreage dedicated to the subject well by colored pencil or hachure marks on the plat below.
2. If more than one lease is dedicated to the well, outline each and identify the ownership thereof (both as to working interest and royalty). **One lease**
3. If more than one lease of different ownership is dedicated to the well, have the interests of all owners been consolidated by communitization, unitization, force-pooling, etc?

☐ Yes ☐ No If answer is "yes," type of consolidation _____

If answer is "no," list the owners and tract descriptions which have actually been consolidated (Use reverse side of this form if necessary.) _____

No allowable will be assigned to the well until all interests have been consolidated (by communitization, unitization, forced-pooling, or otherwise) or until a non-standard unit, eliminating such interests, has been approved by the Commission.



CERTIFICATION

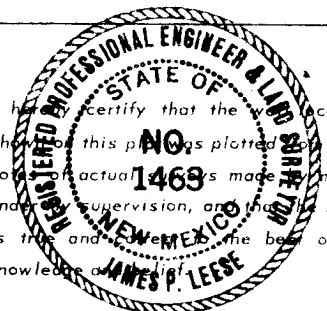
I hereby certify that the information contained herein is true and complete to the best of my knowledge and belief.

Name **Jack D. Cook**
Agent

Position
Kirby Exploration Company
Company
11-14-75

Date

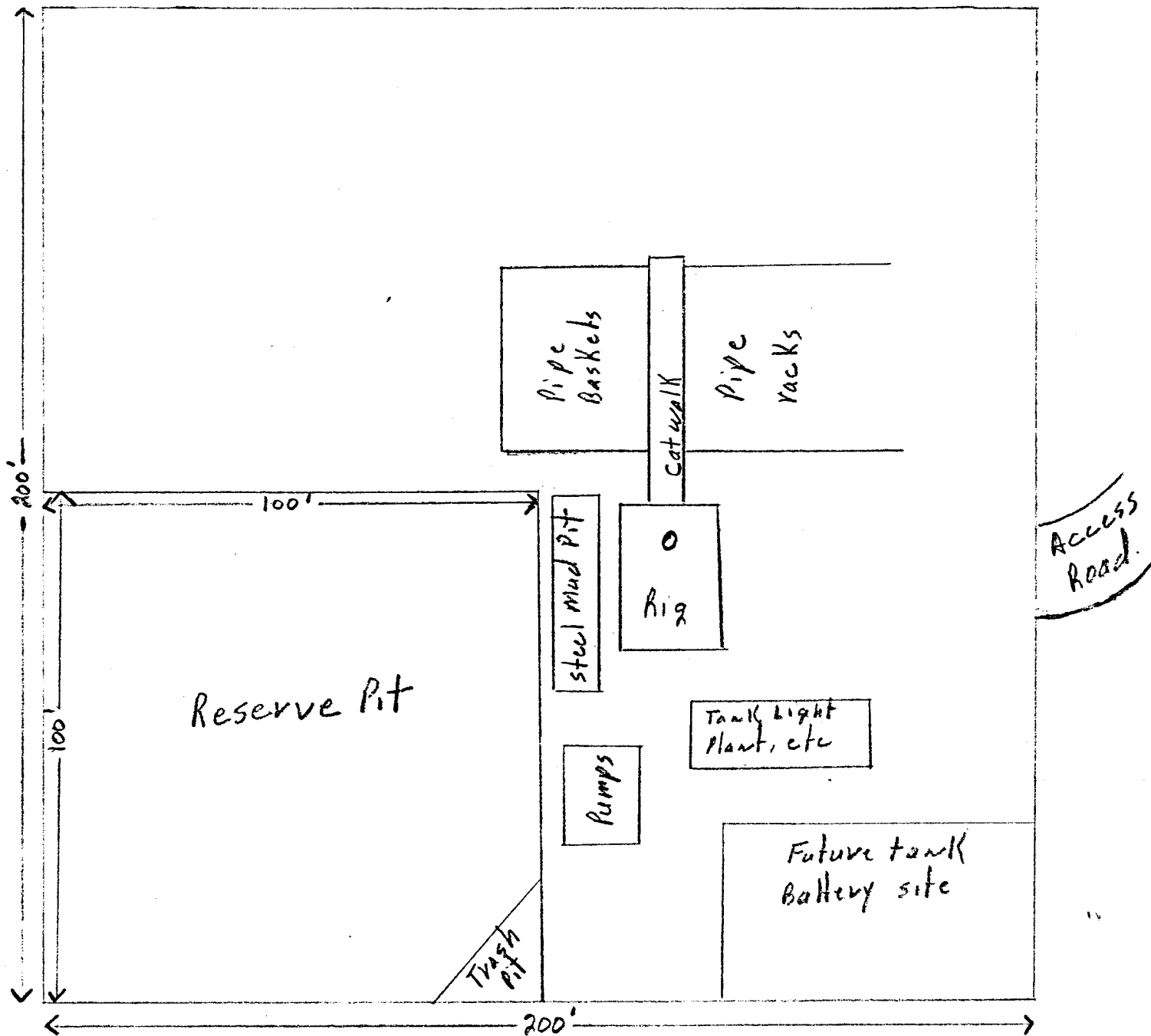
I hereby certify that the location shown on this plat was plotted in the field from actual measurements made on the ground under supervision, and that the same is true and correct to the best of my knowledge.



Date Surveyed
8 November 1975
Registered Professional Engineer
and/or Land Surveyor
James P. Lease

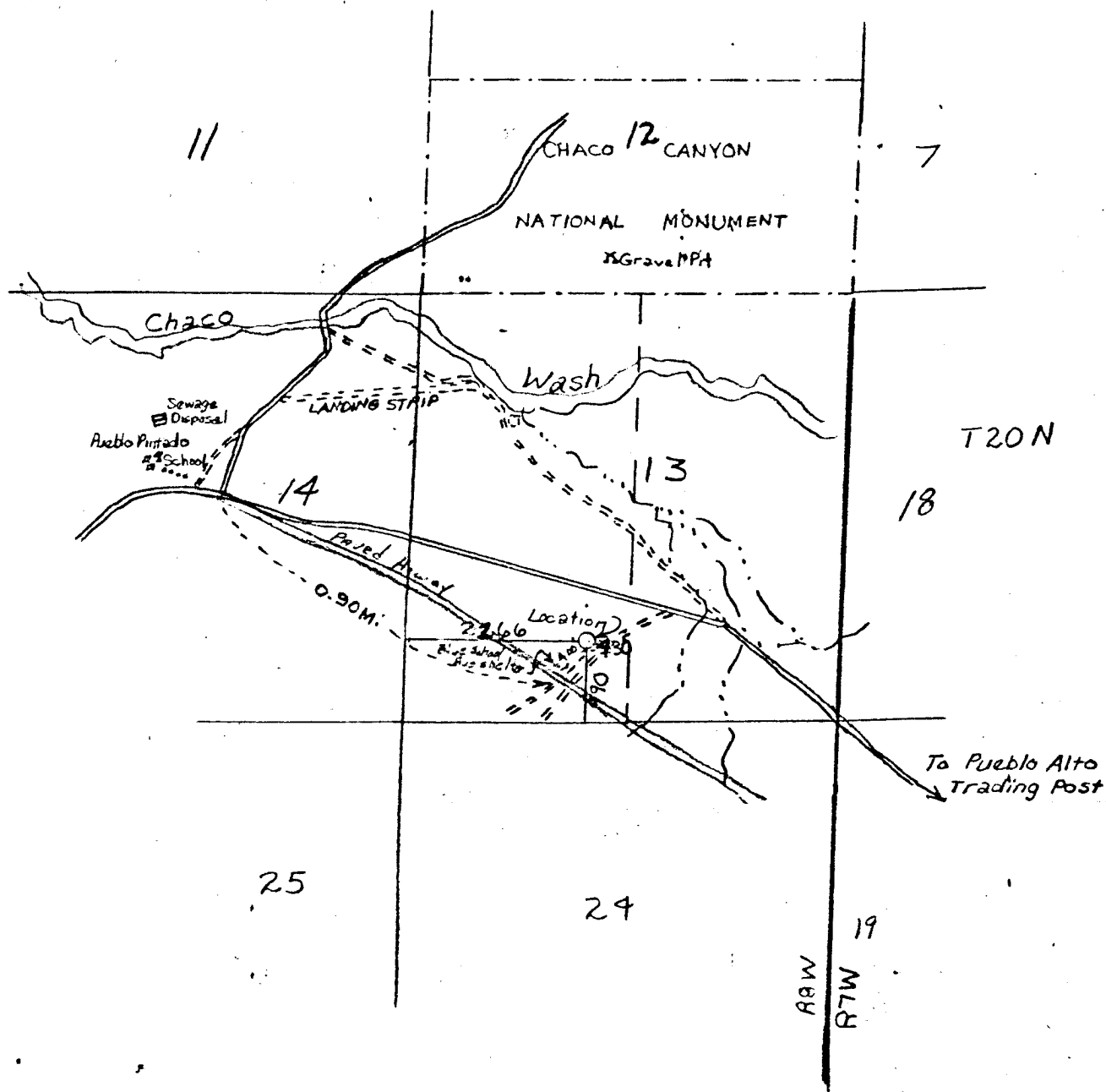
Certificate No.
1463

DRILL SITE PLAT



Scale 1" = 30 ft.

Kirby Exploration Company
 Chaco Monument # 1
 2166' FWL & 990' FSL
 Sec 13-20N-8W
 Wildcat
 McKinley County, New Mexico



N
1" = 2000'

VICINITY MAP FOR
KIRBY EXPLORATION CO.
SHOWING

Well location in the SW 1/4,
Section 13, T20N, R8W,
N. M. P. M., San Juan County,
New Mexico.
Scale: 1" = 2000' Date: 10 Nov., 1975
San Juan Engineering Co.