

UNITED STATES  
DEPARTMENT OF THE INTERIOR

GEOLOGICAL SURVEY *API 30-031-2047A*

APPLICATION FOR PERMIT TO DRILL, DEEPEN, OR PLUG BACK

1a. TYPE OF WORK  
DRILL ☒ DEEPEN ☐ PLUG BACK ☐

b. TYPE OF WELL  
OIL WELL ☒ GAS WELL ☐ OTHER ☐  
SINGLE ZONE ☐ MULTIPLE ZONE ☐

2. NAME OF OPERATOR  
Tenneco Oil Company

3. ADDRESS OF OPERATOR  
1860 Lincoln St., Suite 1200, Denver, Colorado 80203

4. LOCATION OF WELL (Report location clearly and in accordance with any State requirements.)\*  
At surface 1365 FNL and 2621 FEL  
At proposed prod. zone

14. DISTANCE IN MILES AND DIRECTION FROM NEAREST TOWN OR POST OFFICE\*

15. DISTANCE FROM PROPOSED\*  
LOCATION TO NEAREST  
PROPERTY OR LEASE LINE, FT.  
(Also to nearest drig. unit line, if any)

18. DISTANCE FROM PROPOSED LOCATION\*  
TO NEAREST WELL, DRILLING, COMPLETED,  
OR APPLIED FOR, ON THIS LEASE, FT.

21. ELEVATIONS (Show whether DF, RT, GR, etc.)  
7003 GL

16. NO. OF ACRES IN LEASE

19. PROPOSED DEPTH  
+ 2860

17. NO. OF ACRES ASSIGNED  
TO THIS WELL *80 acres*

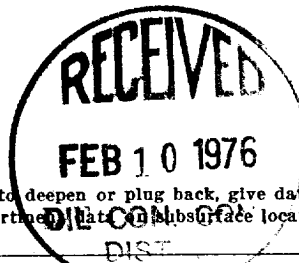
20. ROTARY OR CABLE TOOLS  
Rotary

22. APPROX. DATE WORK WILL START\*  
Upon approval

23. PROPOSED CASING AND CEMENTING PROGRAM

SIZE OF HOLE	SIZE OF CASING	WEIGHT PER FOOT	SETTING DEPTH	QUANTITY OF CEMENT
12 1/4"	8 5/8" K-55	24#	+60'	Sufficient to circulate
7 7/8"	5 1/2" K-55	15.5# & 14#	+ 2860	Sufficient to cover 500' above to top pay zone.

1. Drill 12 1/4" hole  $\pm$  60'. Run 8 5/8" csg to  $\pm$ 60 and cement with a sufficient amount to circulate to surface.
2. Drill 7 7/8" hole to T.D. of +2860'.
3. Test any interval designated by wellsite geologist.
4. Run logs designated by well site geologist.
5. Run 5 1/2" csg. to T.D. and cement with a sufficient amount to cover 500' above top pay zone.
6. Will perforate csg. and treat or stimulate as necessary to establish commercial production.
7. Clean up area.



IN ABOVE SPACE DESCRIBE PROPOSED PROGRAM: If proposal is to deepen or plug back, give data on present productive zone and proposed new productive zone. If proposal is to drill or deepen directionally, give pertinent data on subsurface locations and measured and true vertical depths. Give blowout preventer program, if any.

24. SIGNED *H. L. Myers* TITLE Div. Production Manager DATE 2-5-76

(This space for Federal or State office use)

PERMIT NO. \_\_\_\_\_ APPROVAL DATE \_\_\_\_\_

APPROVED BY \_\_\_\_\_ TITLE \_\_\_\_\_ DATE \_\_\_\_\_

CONDITIONS OF APPROVAL, IF ANY:

*aka*

\*See Instructions On Reverse Side

RECEIVED

FEB 9 1976

U. S. GEOLOGICAL SURVEY  
FARMINGTON, N. M.

NEW MEXICO OIL CONSERVATION COMMISSION  
WELL LOCATION AND ACREAGE DEDICATION PLAT

Form 1-1-60  
Supersedes C-128  
Effective 1-1-61

All distances must be from the outer boundaries of the Section.

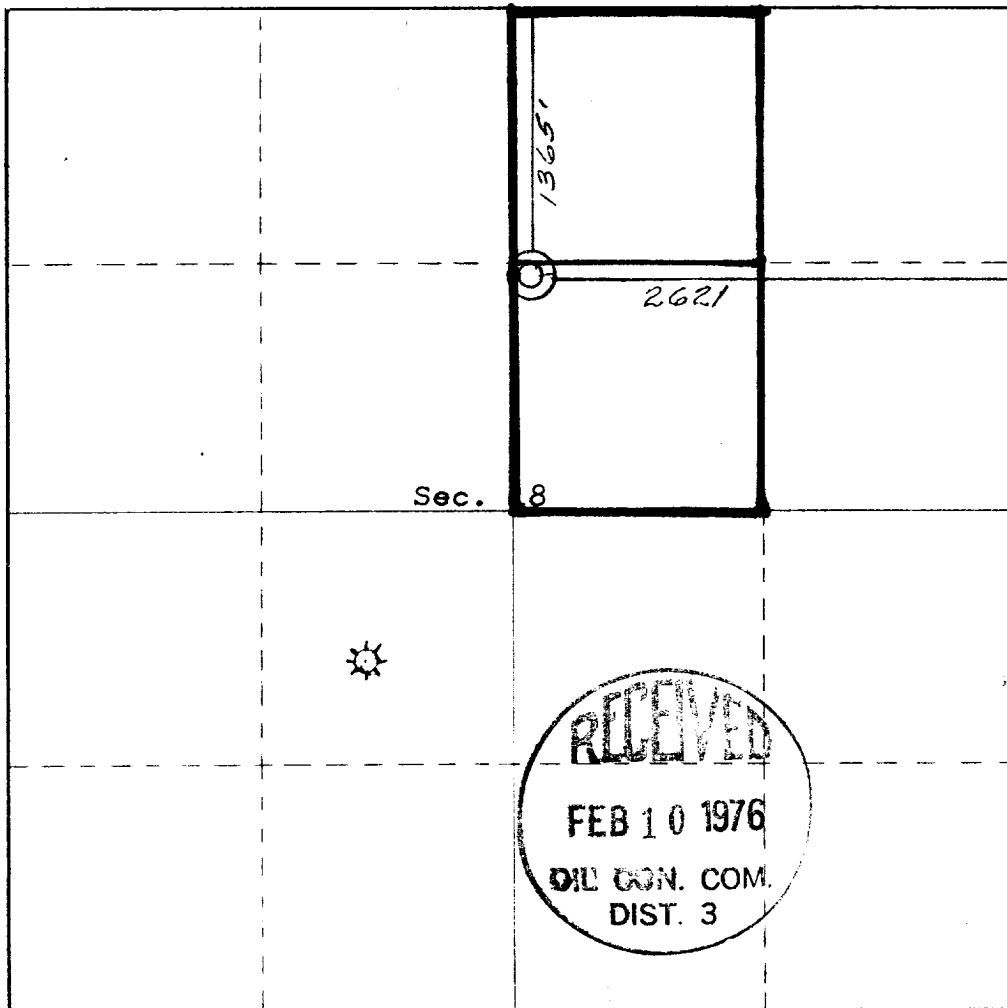
Lessee <b>TENNECO OIL COMPANY</b>		Lease <b>DAKOTA LONE PINE "D" Unit</b>		Well No. <b>30</b>
Section <b>G</b>	Section <b>18</b>	Township <b>17 NORTH</b>	Range <b>8 WEST</b>	County <b>MCKINLEY</b>
Amount of the Dedication of Well: <b>1365</b> feet from the <b>NORTH</b> line and <b>2621</b> feet from the <b>EAST</b> line				
Ground Level Elev. <b>7008</b>	Producing Formation <b>Dakota</b>	Pool <b>Undesignated LONE PINE DAKOTA D</b>	Dedication Acreage <b>80</b>	Joint <b>JOINT</b>

1. Outline the acreage dedicated to the subject well by colored pencil or hachure marks on the plat below.
2. If more than one lease is dedicated to the well, outline each and identify the ownership thereof (both as to working interest and royalty).
3. If more than one lease of different ownership is dedicated to the well, have the interests of all owners been consolidated by communitization, unitization, force-pooling, etc?

☒ Yes ☐ No If answer is "yes," type of consolidation **Unitization Feb. 23, 1972**

If answer is "no," list the owners and tract descriptions which have actually been consolidated. (Use reverse side of this form if necessary.) \_\_\_\_\_

No allowable will be assigned to the well until all interests have been consolidated (by communitization, unitization, forced-pooling, or otherwise) or until a non-standard unit, eliminating such interests, has been approved by the Commission.



CERTIFICATION

I hereby certify that the information contained herein is true and complete to the best of my knowledge and belief.

Name **Ted F. Dwyer**

Position  
**Production Clerk**

Company  
**Tenneco Oil Co.**

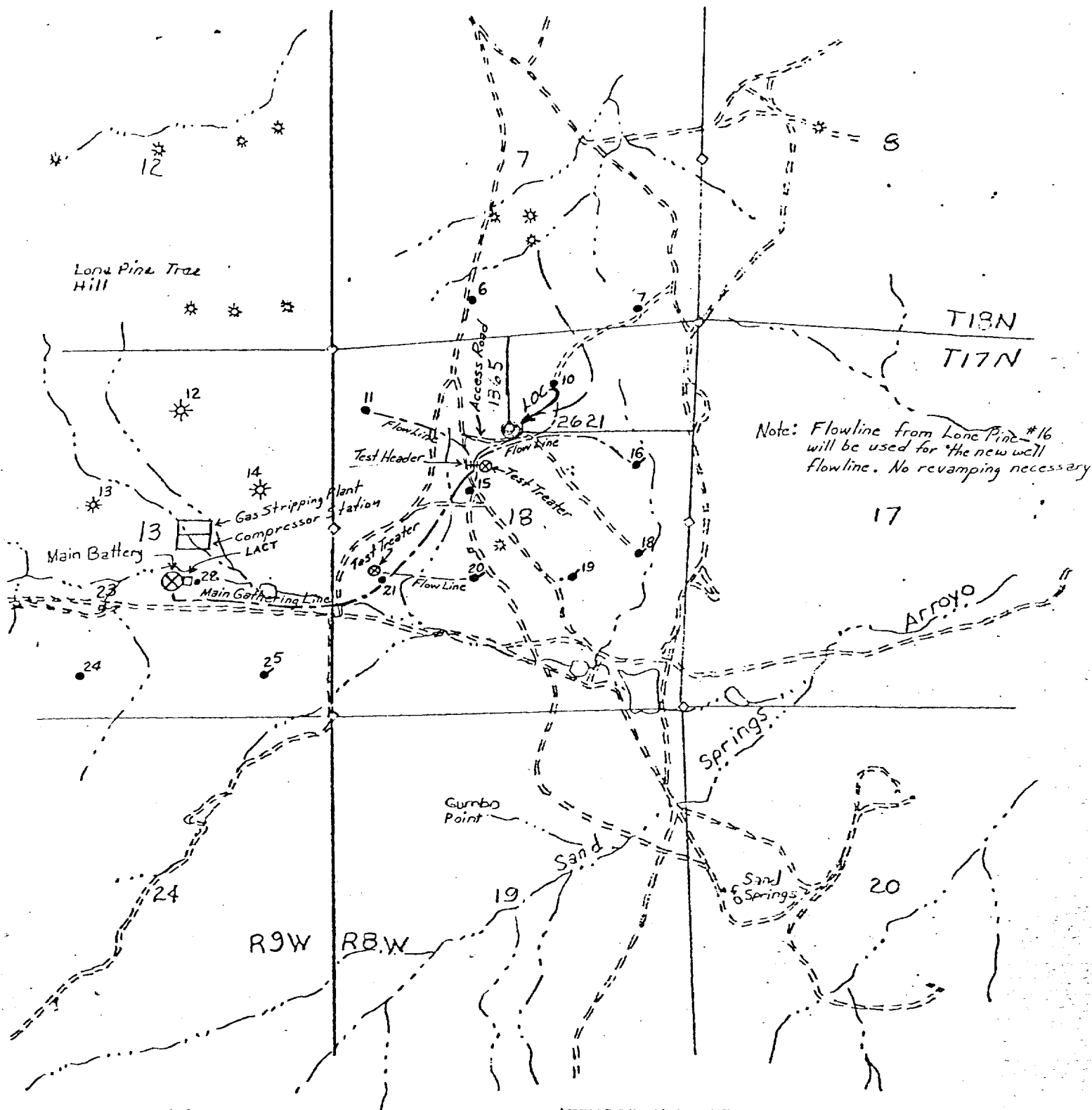
Date **Feb. 4, 1976**

I hereby certify that the well location shown on this plat was plotted from field notes of actual surveys made by me or under my supervision, and that the same is true and correct to the best of my knowledge and belief.

Date Surveyed  
**27 January, 1976**

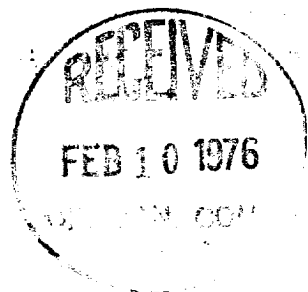
Registered Professional Engineer and Surveyor  
**James P. Leese**

Certificate No. **1463**



N

1"=2000'



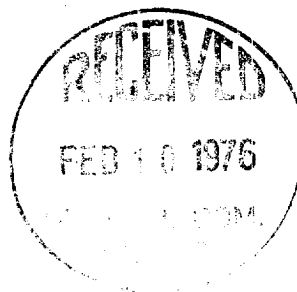
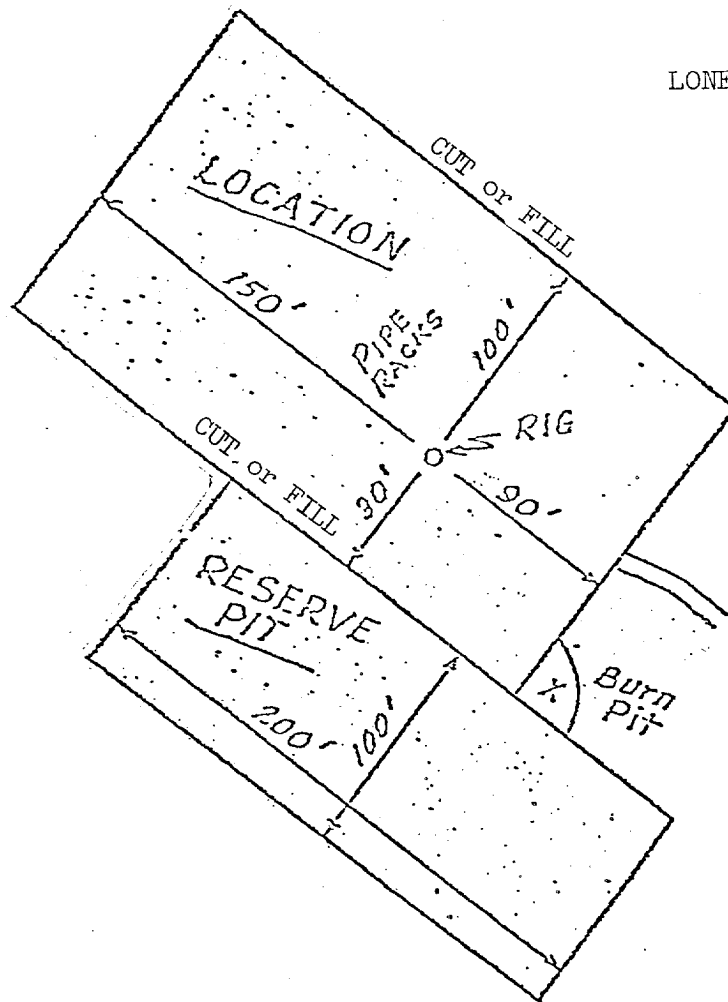
# VICINITY MAP FOR TENNECO OIL CO.

Showing well locations in the  
SW 1/4 NE 1/4 Section 13, T17N,  
R8W, N.M.P.M., MCKINLEY COUNTY,  
NEW MEXICO.

DATE: 23 JAN. 1976 SCALE: 1"=2000'

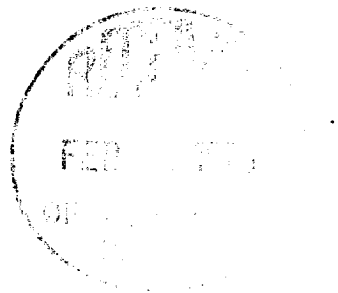
SAN JUAN ENGINEERING CO.

LONE PINE DAKOTA "D" # 30



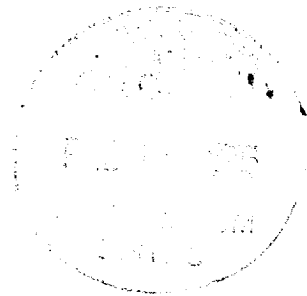
Lone Pine Dakota "D" Unit #30  
12 Point Plan

1. Local roads are shown on attached map, exit from the main highway is some 40 or 50 miles away and does not apply in this case.
2. No access roads are planned. This well is located adjacent to existing lease roads.
3. Shown on attached map.
4. Shown on attached map.
5. Shown on attached map, no new tank batteries or flow lines required.
6. Water will be available from lease operators.
7. All combustible waste will be burned in the burn pit. All other waste including cuttings will be put in the reserve pit and covered when the location is restored.
8. No camp required.
9. No airstrip required.
10. Shown on attached diagram.
11. Area used during drilling will be reduced to a permanent well location of minimum size. Entire area will be restored to as near original as practical and reseeded as specified by the regulatory agency in charge.
12. This area is mainly grassland, the surface elevation is  $\pm 7000'$  with gently rolling hills and very few trees.



Lone Pine Dakota "D" Unit #30  
7 Point Pressure Control Program

1. See Form 9-331-C.
2. All equipment will be 10", 900 series or equivalent.
3. Not required.
4. 10", 900 series, double ram dressed with blind rams and pipe rams to correspond with whatever size pipe being used. Fill, kill, and choke lines will be 2".
5. A kelley cock will be used at all times. A bottom hole float will be used as needed and a stabbing valve will be available on the floor at all times.
6. BHP @ 2900 will not exceed 1200 psi.
7. Drilling mud will be water base, low solids, with sufficient viscosity to maintain good hole conditions.



TENNECO OIL COMPANY

PROGNOSIS TO DRILL AND COMPLETE

DIVISION Denver

DATE: January 30, 1976

LEASE: Lone Pine Dakota "D"

WELL NO.: 30

LOCATION: 1365' FNL, 2621' FEL  
Sec. 18, T 17N, R 8W  
McKinley Co., New Mexico

FIELD: Lone Pine

~~XXXXXXXXXX~~ ESTIMATED ELEVATION: 7008' GL

ESTIMATED TOTAL DEPTH: 2860'

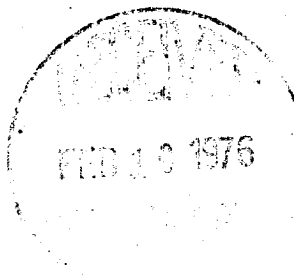
PROJECTED HORIZON: Dakota "D"

DRILLING, CASING AND CEMENT PROGRAM:

1. Set and circulate with Class "A" cement plus 2%  $\text{CaCl}_2$ , two joints (60'  $\pm$ ) of 8 5/8", 24#, K55, ST&C in 12 1/4" hole prior to MIRURT.
2. Drill 7 7/8" hole using a fresh water gel-chemical mud system with mud-up about 2500'.
3. Test any interval designated by well-site geologist.
4. Run logs designated by wellsite geologist.
5. Run 5 1/2", 15.5#, K-55, ST&C casing if commercial with cement top 500' above top pay zone or P&A per U.S.G.S. instructions.
6. Estimated Tops:

Point Lookout	475
Mancos	775
Upper Hospah	1710

Graneros	2560
Dakota "A"	2600
T.D.	2860



0 - 2500' Fresh water

2500 - T.D. Lower WL to 10cc or less prior to drilling pay zone.

CORING AND TESTING PROGRAM:

DST - Possible in Dakota

DEVIATION SURVEYS:

1. Survey surface hole at 100' intervals. Maximum allowable deviation at 250' is  $1\frac{1}{2}^{\circ}$ .
2. FROM SURFACE TO TOTAL DEPTH DEVIATION SURVEYS MUST BE TAKEN EVERY 500' OR EACH TRIP WHICHEVER IS FIRST. This may entail running the TOTCO on wireline. Record each survey on the A.A.O.D.C. Drilling Report sheet. Maximum allowable change in deviation is  $1^{\circ}$  per 100'.

SAMPLES:

10' from 2400' to T.D.

WELL SURVEYS:

Logs: IES and FDC

B.O.P.:

PREVENTORS MUST BE CHECKED FOR OPERATION EVERY 24 HOURS, AND THE CHECK MUST BE RECORDED ON THE A.A.O.D.C. DRILLING REPORT SHEET.

REPORTS:

1. A 6:00 A.M. drilling report including depth, formation, time distribution, mud properties, bit record, weight on bit, rotary speed, pump pressure, daily and cumulative water used, daily and cumulative mud cost and other pertinent information to be called in to Tenneco Oil Company, Denver, Colorado

Call the following numbers:

255-1995 - Report Box - automatic answering receiver that will take calls anytime day or night.

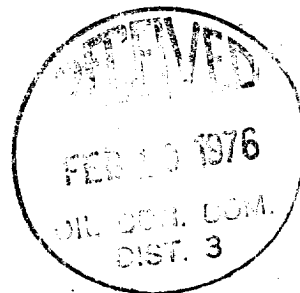
292-9920 - Phyllis Matera - 7:45 A.M. to 8:30 A.M. Monday morning report to include separate reports for Saturday, Sunday and Monday.

2. The yellow sheet of the A.A.O.D.C. report filled out completely, the original copy of the drilling time recorder, copies of water tickets and copies of any other invoices signed and received for Tenneco Oil Company will be mailed daily to:

Tenneco Oil Company  
Suite 1200 - Lincoln Tower Building  
Denver, Colorado 80203

3. In cases of emergencies, call the following:

D. E. Brown (303) 771-8297



**Tenneco Oil**  
A Tenneco Company

Suite 1200  
Lincoln Tower Building  
Denver, Colorado 80203  
(303) 292-9920



February 4, 1976

**RECEIVED**

FEB 9 1976

U. S. GEOLOGICAL SURVEY  
FARMINGTON, N. M.

U. S. Geological Survey  
Box 959  
Petroleum Club Plaza Building  
Farmington, New Mexico 87401

Re: Application for Permit to Drill  
Lone Pine Dakota "D" Unit Well  
#30.

Gentlemen:

Attached are five copies each of the Application for Permit to Drill, Surveyor's Plat, Vicinity Map, Location Access Map, 12-Point Surface Use Plan, and 7-Point Well Control Plan for the above captioned well.

We are planning to commence drilling operations as soon as permits are approved.

If any further information is needed, please contact this office.

Yours very truly,

TENNECO OIL COMPANY

*D. D. Myers*

D. D. Myers  
Division Production Manager

TD:df

Attachments

