

UNITED STATES
DEPARTMENT OF THE INTERIOR
GEOLOGICAL SURVEY

APPLICATION FOR PERMIT TO DRILL, DEEPEN, OR PLUG BACK

1a. TYPE OF WORK

DRILL ☒DEEPEN ☐PLUG BACK ☐

b. TYPE OF WELL

OIL
WELL ☒GAS
WELL ☐

OTHER

SINGLE
ZONE ☒MULTIPLE
ZONE ☐

2. NAME OF OPERATOR

Filon Exploration Corporation

3. ADDRESS OF OPERATOR

c/o Minerals Management Inc.

501 Airport Dr., Suite 105, Farmington, N.M. 87401

4. LOCATION OF WELL (Report location clearly and in accordance with any State requirements.*)

At surface

2310' FNL, 2310' FWL, SEC. 21, T20N, R5W

At proposed prod. zone

14. DISTANCE IN MILES AND DIRECTION FROM NEAREST TOWN OR POST OFFICE*

23 miles South-Southwest Counselors Trading Post N.M.

15. DISTANCE FROM PROPOSED*

LOCATION TO NEAREST
PROPERTY OR LEASE LINE, FT.
(Also to nearest drlg. unit line, if any)

330'

16. NO. OF ACRES IN LEASE

1742.38

18. DISTANCE FROM PROPOSED LOCATION*
TO NEAREST WELL, DRILLING, COMPLETED,
OR APPLIED FOR, ON THIS LEASE, FT.

19. PROPOSED DEPTH

6200'

17. NO. OF ACRES ASSIGNED
TO THIS WELL

40

20. ROTARY OR CABLE TOOLS

Rotary

21. ELEVATIONS (Show whether DF, RT, GR, etc.)

6806 GR

22. APPROX. DATE WORK WILL START*

8-3-76

23.

PROPOSED CASING AND CEMENTING PROGRAM

SIZE OF HOLE	SIZE OF CASING	WEIGHT PER FOOT	SETTING DEPTH	QUANTITY OF CEMENT
15"	10 3/4"	40.50#	200'	200 sx
8 3/4"	7"	23-26#	6200'	300-500 sx (2 stage)

Filon Exploration Corporation (Operator) proposes to drill a Jurassic test to 6200'. Completion will be determined from logs. A Series 900 (3000 psi) WP blowout preventer will be used.

JUL 29 1976

IN ABOVE SPACE DESCRIBE PROPOSED PROGRAM: If proposal is to deepen or plug back, give data on present productive zone and proposed new productive zone. If proposal is to drill or deepen directionally, give pertinent data on subsurface locations and measured and true vertical depths. Give blowout preventer program, if any.

24. SIGNED J. Arnold Snell TITLE Area Manager DATE July 29, 1976
Minerals Management Inc.

(This space for Federal or State office use)

PERMIT NO. _____

APPROVAL DATE _____

APPROVED BY _____

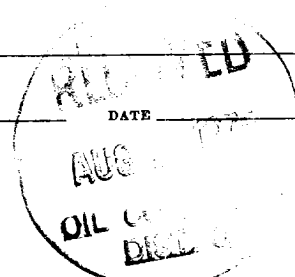
TITLE _____

DATE _____

CONDITIONS OF APPROVAL, IF ANY:

OkalJK

*See Instructions On Reverse Side



NEW MEXICO OIL CONSERVATION COMMISSION
WELL LOCATION AND ACREAGE DEDICATION PLAT

Form C-102
Supersedes C-128
Effective 1-1-65

All distances must be from the outer boundaries of the Section.

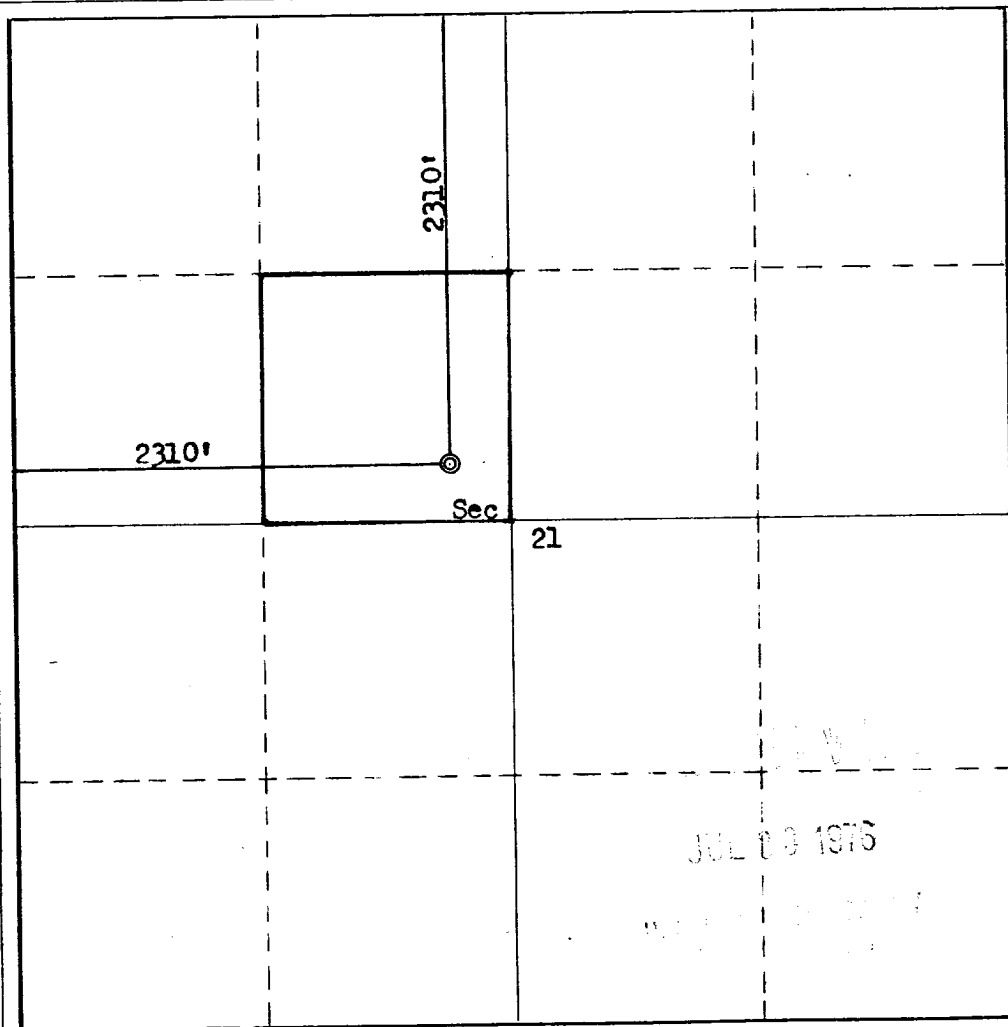
Operator Filon Exploration Corporation			Lease Federal 21		Well No. 2
Unit Letter F	Section 21	Township 20N	Range 5W	County McKinley	
Actual Footage Location of Well: 2310' feet from the North line and 2310 feet from the West line					
Ground Level Elev. 6806	Producing Formation Entrada	Pool Wildcat	Dedicated Acreage: 40 Acres		

1. Outline the acreage dedicated to the subject well by colored pencil or hachure marks on the plat below.
2. If more than one lease is dedicated to the well, outline each and identify the ownership thereof (both as to working interest and royalty).
3. If more than one lease of different ownership is dedicated to the well, have the interests of all owners been consolidated by communitization, unitization, force-pooling, etc?

☐ Yes ☐ No If answer is "yes," type of consolidation _____

If answer is "no," list the owners and tract descriptions which have actually been consolidated. (Use reverse side of this form if necessary.) _____

No allowable will be assigned to the well until all interests have been consolidated (by communitization, unitization, forced-pooling, or otherwise) or until a non-standard unit, eliminating such interests, has been approved by the Commission.



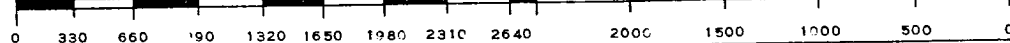
CERTIFICATION

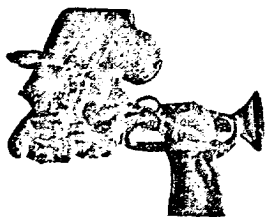
I hereby certify that the information contained herein is true and complete to the best of my knowledge and belief.

Name T. Arnold Sull
Position _____
Area Manager
Company _____
Minerals Management Inc.
Date July 29, 1976

I hereby certify that the well location shown on this plat was placed from field notes of actual survey made by me or under my supervision, and that the same is true and correct to the best of my knowledge and belief.

Date Surveyed July 28, 1976
Registered Professional Engineer and/or Land Surveyor
Fred B. Kerr Jr.
Certificate No. 3950





MINERALS MANAGEMENT INCORPORATED
A Division of SCIENTIFIC SOFTWARE CORPORATION

July 28, 1976

DEVELOPMENT PLAN FOR SURFACE USE

FILON EXPLORATION CORPORATION

FEDERAL 21 WELL NO. 2

2310' FNL, 2310' FWL, SEC. 21, T20N, R5W

McKINLEY COUNTY, NEW MEXICO

1. Existing Roads

The existing road from Counselors Trading Post to Ojo Encino School, from the school to Star Lake Compressor Station will be used.

2. Planned Access Road

As per topographic map, approximately 600' of new road will be built from existing well Filon Federal 21 No. 1.

3. Location of Existing Wells

Filon Federal 21 Well No. 1, 2310' FSL, 2310' FWL, SEC. 21, T20N, R5W.

4. Location of Tank Batteries and Flowlines

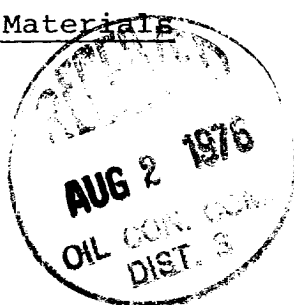
Will be initially located on location pad approximately 150' from well if production is encountered.

5. Water Supply

Water will be hauled to location from BLM Encino water well.

6. Source of Construction Materials

Not applicable



JUL 30 1976

U.S. DEPARTMENT OF THE INTERIOR
BUREAU OF LAND MANAGEMENT

7. Method of Handling Waste Disposal

Waste will be buried in the reserve pit on completion of the well. The reserve pit will be backfilled. Toilet facilities will be provided.

8. Ancillary Facilities

No camps or airstrips will be used.

9. Diagram of Well Location

See attachment. A 4'-6' cut will be needed.

10. Plans for Restoration to Surface

The surface will be restored and reseeded as directed by the Bureau of Land Management.

11. Other Information

Impact on the environment will be minimal. The access road and well location is sparsely vegetated and minimal trees and sage will be disturbed.

12. Operators Representative

Minerals Management, Inc., 501 Airport Dr., Suite 105, Farmington, New Mexico 87401.

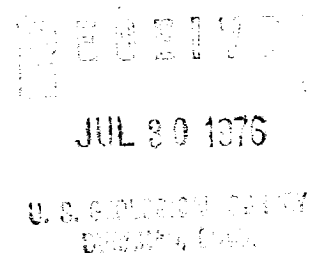
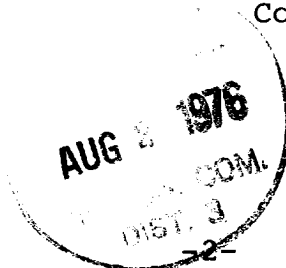
13. Certification

I hereby certify that I, or persons under my direct supervision, have inspected the proposed drillsite and access route; that I am familiar with the conditions which presently exist; that the statements made in this plan are, to the best of my knowledge, true and correct; and that the work associated with the operations proposed herein will be performed by Filon Exploration Corporation and its contractors and subcontractors in conformity with this plan and the terms under which it is approved.

7-29-76
Date

J. Arnold Shell Area Manager
Name and Title

Minerals Management Inc.
Company



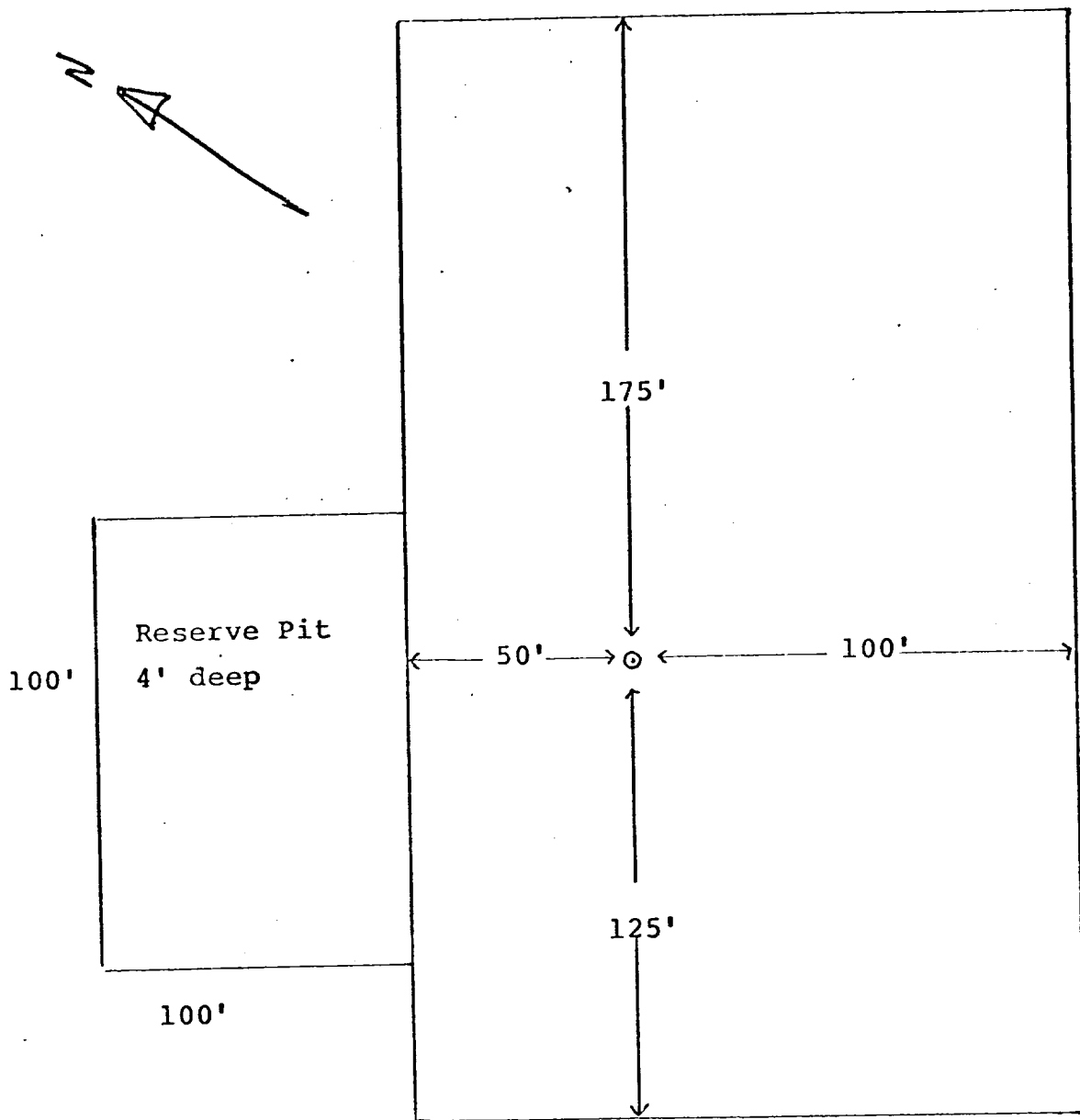
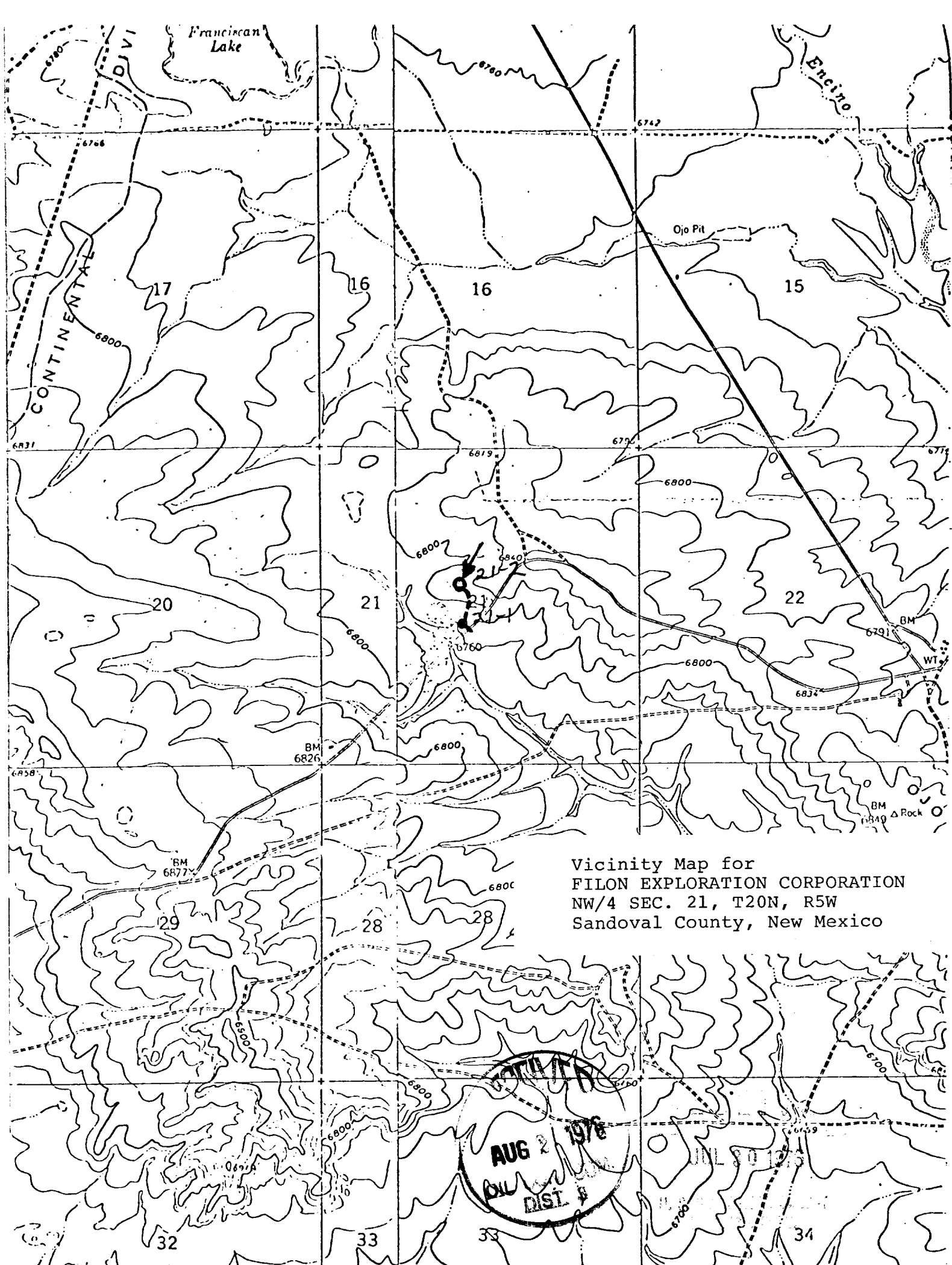


DIAGRAM OF WELL LOCATION



JUL 26 1976

8:00 PM



Vicinity Map for
FILON EXPLORATION CORPORATION
NW/4 SEC. 21, T20N, R5W
Sandoval County, New Mexico

