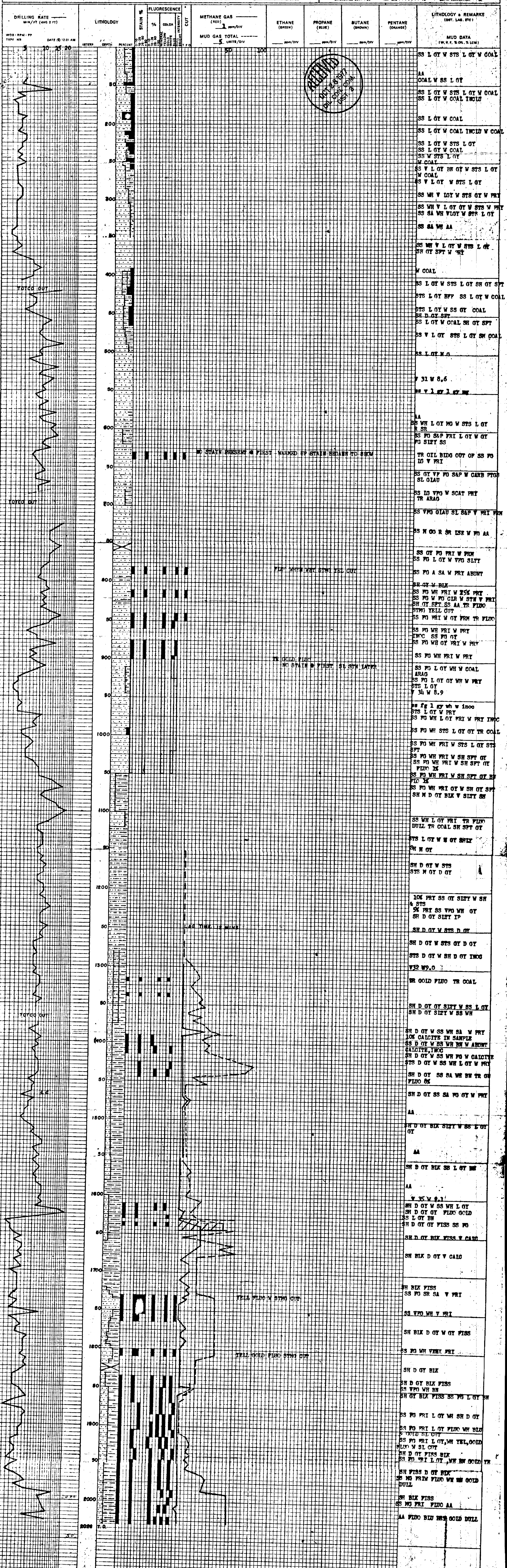


**MEGA WELL LOGGING** P.O. BOX 2095 PHONE (505) 325-3507 FARMINGTON, NEW MEXICO 87401  
 LEASE & WELL: **MARCELINA #6** LOCATION: **H 24** TWP: **16N** RNG: **10W**  
 COUNTY: **SAN JUAN** STATE: **NEW MEXICO**  
 SPUD: **7/23/77** COMPLETE: **7/28/77** TO: **2028** ELEV: **7130** GL: **KB**  
 LOGGING COMPANY: **WILLIAM G. GILL LOGGING** LOGGERS: **KEVIN VAL, PAT JAMISON**  
 DATES LOGGED: **7/23/77** TO **7/28/77** DEPTHS LOGGED: **90** TO **2028**

**LEGEND**

SANDSTONE (VT 75N)	DOLOMITE (VT 74N)	SHALE (DAY COLOR)
CONGLOMERATE (VT 72N)	ANHYDRITE (VT 74N)	SALT (VT 72N)
LIMESTONE (VT 74N)	CHERT (VT 73T)	COAL (BLACK)
		MUDSTONE (VT 74T)

ABBREVIATIONS: DRILL BITER TEST, NO RETURNS, DRILL AFTER TRIP, LAT, DIRECTIONAL SURVEY, LOG, CIRCULATED OUT, CO, TRIP BAR, TB, DEPTH CORRECTION, DC



**RECEIVED**  
 AUG 28 1977  
 OIL COMPANY

NO STAIN PRESENT @ FIRST WARNED @ STAIN BEGANN TO SHOW

FLAT WHEN MUD STING YEL CUT

TRIGOLD FIBRO NO STAIN @ FIRST @ 32 SPW LATER

LEG TIME 12 MIN

YELL FLUD W STING CUT

YELL GOLD FIBRO STING CUT

AA FLUD BID BRT GOLD DULL