

CORRECTED

SUBMIT IN TRIPLICATE\*  
(Other instructions on  
reverse side)Form approved.  
Budget Bureau No. 42-R1425.UNITED STATES  
DEPARTMENT OF THE INTERIOR  
GEOLOGICAL SURVEY

## APPLICATION FOR PERMIT TO DRILL, DEEPEN, OR PLUG BACK

## 1a. TYPE OF WORK

DRILL ☒DEEPEN ☐PLUG BACK ☐

## b. TYPE OF WELL

OIL  
WELL ☒GAS  
WELL ☐

OTHER

SINGLE  
ZONE ☐MULTIPLE  
ZONE ☐

## 2. NAME OF OPERATOR

Basin Fuels, Incorporated

## 3. ADDRESS OF OPERATOR

Suite 300, 300 W. Arrington, Farmington, New Mexico

## 4. LOCATION OF WELL (Report location clearly and in accordance with any State requirements.)\*

At surface

330' FNL, 1750' FEL -

At proposed prod. zone

Same

## 14. DISTANCE IN MILES AND DIRECTION FROM NEAREST TOWN OR POST OFFICE\*

22 miles SE Counselor, N.M.; 5 miles SW Ojo Encino

School

## 15. DISTANCE FROM PROPOSED\*

LOCATION TO NEAREST  
PROPERTY OR LEASE LINE, FT.  
(Also to nearest drlg. unit line, if any)

330'

## 16. NO. OF ACRES IN LEASE

480

17. NO. OF ACRES ASSIGNED  
TO THIS WELL

40 if oil; 160 if gas

## 18. DISTANCE FROM PROPOSED LOCATION\*

TO NEAREST WELL, DRILLING, COMPLETED,  
OR APPLIED FOR, ON THIS LEASE, FT.

1420'

## 19. PROPOSED DEPTH

3000'

## 20. ROTARY OR CABLE TOOLS

Rotary

## 21. ELEVATIONS (Show whether DF, RT, GR, etc.)

6718 GR

## 22. APPROX. DATE WORK WILL START\*

December 2, 1977

## 23.

## PROPOSED CASING AND CEMENTING PROGRAM

SIZE OF HOLE	SIZE OF CASING	WEIGHT PER FOOT	SETTING DEPTH	QUANTITY OF CEMENT
11 1/2	8-5/8	24#	100	100 sx.
7-7/8	4-1/2	9.50#	3000	150 sx.

Set 8-5/8 surface casing at 100' and circulate cement. Drill to 3000' run logs, if production is indicated, set and cement 4-1/2" production casing with 150 sacks cement. Gun perforate, fracture treat in a completion attempt. If non-commercial, will plug and abandon in accordance with U.S.G.S. abandonment instructions and restore surface.

A 10" Shaffer 3000 Series blow-out preventer will be used at all times material to the drilling of the well in question.

IN ABOVE SPACE DESCRIBE PROPOSED PROGRAM: If proposal is to deepen or plug back, give data on present productive zone and proposed new productive zone. If proposal is to drill or deepen directionally, give pertinent data on subsurface locations and measured and true vertical depths. Give blowout preventer program, if any.

24.

SIGNED

(This space for Federal or State office use)

TITLE

President

DATE November 14, 1977

PERMIT NO.

APPROVAL DATE

APPROVED BY

TITLE

DATE

CONDITIONS OF APPROVAL, IF ANY:

\*See Instructions On Reverse Side

**NEW MEXICO OIL CONSERVATION COMMISSION  
WELL LOCATION AND ACERAGE DEDICATION PLAT**

All distances must be from the outer boundaries of the Section

Operator <b>BASIN FUELS, INCORPORATED</b>			Lease <b>NOO-NAVAJO</b>		Well No. <b>2</b>
Unit Letter	Section <b>13</b>	Township <b>20 NORTH</b>	Range <b>6 WEST</b>	County <b>MCKINLEY</b>	
Actual Footage Location of Well: <b>330</b> feet from the <b>NORTH</b> line and <b>1750</b> feet from the <b>EAST</b> line					
Ground Level Elev. <b>6718</b>	Producing Formation <b>Mesaverde</b>		Pool <b>Franciscan Lake Mesaverde</b>	Dedicated Acreage: <b>40</b>	Acres

1. Outline the acreage dedicated to the subject well by colored pencil or hachure marks on the plat below.
2. If more than one lease is dedicated to the well, outline each and identify the ownership thereof (both as to working interest and royalty),
3. If more than one lease of different ownership is dedicated to the well, have the interests of all owners been consolidated by communitization, unitization, force-pooling, etc?

( ) Yes ( ) No If answer is "yes," type of consolidation .....

If answer is "no," list the owners and tract descriptions which have actually consolidated. (Use reverse side of this form if necessary.) .....

No allowable will be assigned to the well until all interests have been consolidated (by communitization, unitization, forced-pooling, or otherwise) or until a non standard unit, eliminating such interests, has been approved by the Commission.

**CERTIFICATION**

I hereby certify that the information contained herein is true and complete to the best of my knowledge and belief.

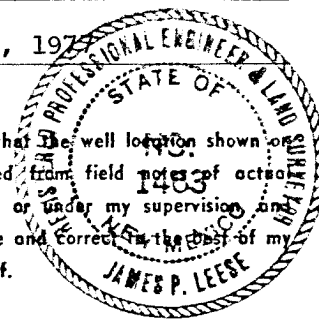
*Joel B. Burr, Jr.*  
Name  
**Joel B. Burr, Jr.**

Position  
**President**

Company  
**Basin Fuels, Incorporated**

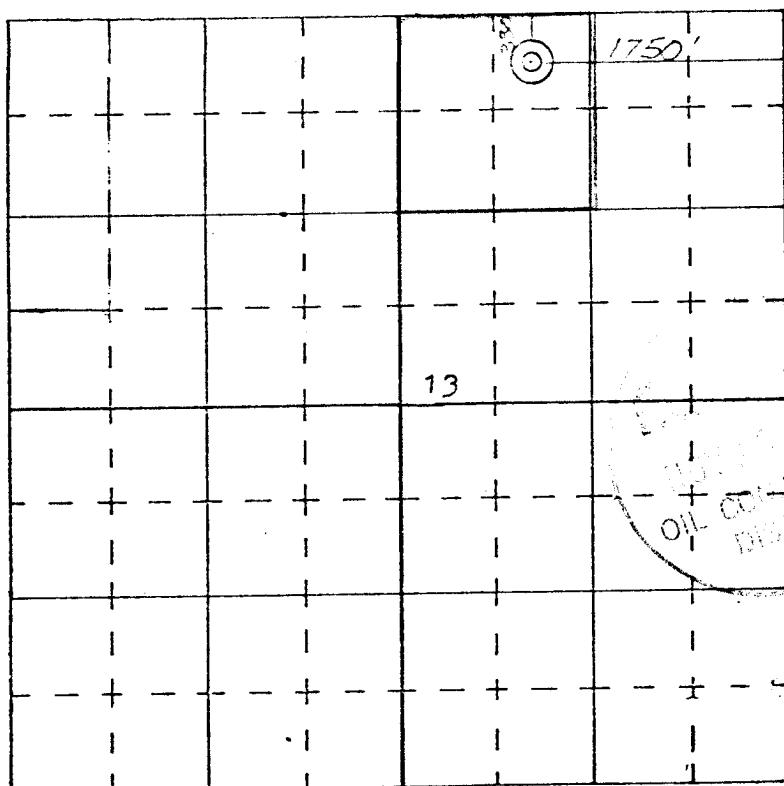
Date  
**November 4, 1977**

I hereby certify that the well location shown on this plat was plotted from field notes of actual surveys made by me or under my supervision and that the same is true and correct to the best of my knowledge and belief.



**29 October, 1977**  
Date Surveyed

*James P. Leese*  
Registered Professional Engineer  
and/or Land Surveyor



SCALE—4 INCHES EQUALS 1 MILE

DEVELOPMENT PLAN FOR SURFACE RESUME

COMPANY:

Basin Fuels, Incorporated  
Suite 300, 300 W. Arrington  
Farmington, N.M. 87401

WELL:

Noo-Navajo No. 2  
330' FNL, 1750' FEL  
Sec. 13, T20N, R6W  
McKinley County, New Mexico

1. Location and vicinity map, San Juan Engineering Company, Exit Highway 44, 22 miles northwest of lease. Directions to site: at Counselor, N.M. turn right, go 4.5 miles to cross-road, left at cross-road, on Ojo Encino Road go 14.5 miles; at this point, trail off main road, go south 3 miles to site.
2. No roads required; only slight improvement of existing trail will be required.
3. Eight producing wells, located in the SW SW Sec. 7, SE NW Sec. 7, NW SW Sec. 7, and NW NW Sec. 18, Township 20 North, Range 5 West; SE SE Sec. 12, Township 20 North, Range 6 West, SW NE Sec. 7, Township 20 North, Range 5 West; SE NE Sec. 12, Township 20 North, Range 6 West; and NE NE Sec. 13, Township 20 North, Range 6 West.
4. Roads shown on vicinity plat and location plat.
5. In the event of production, tank battery to be installed on location.
6. Water will come from lease. (Water produced in association with oil production).
7. All trash and waste material to be placed in mud pit and covered. No other surface to be used.
8. None
9. None.
10. Rig layout shown on plat attached. Area is flat with sagebrush. Drilling pad to be compacted.
11. Upon completion of drilling or producing operation, the surface will be leveled and restored in accordance with instructions from appropriate governmental agency.
12. Area is flat, covered with sagebrush. Drill site to be compacted, and upon completion of operation will be leveled and restored.

Field representatives to contact:

In Farmington:

Joel B. Burr, Jr.  
Basin Fuels, Incorporated  
Suite 300, 300 W. Arrington  
Farmington, New Mexico 87401  
Phone: (505) 325-1701

Pumper At Location:

Eugene V. Vigil  
P.O. Box 719  
Cuba, New Mexico 87613  
Phone: (505) 325-1170, Car 120

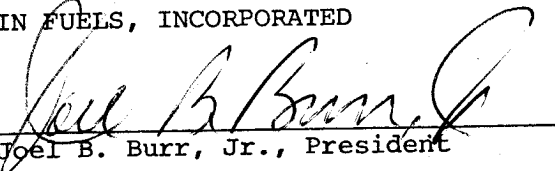
13. Certification:

I hereby certify that I, or persons under my direct supervision, have inspected the proposed drillsite and access route; that I am familiar with the conditions which presently exist; that the statements made in this plan are, to the best of my knowledge, true and correct; and, that the work associated with the operations proposed herein will be performed by Basin Fuels, Incorporated and its contractors and sub-contractors in conformity with this plan and the terms and conditions under which it is approved.

November 7, 1977

BASIN FUELS, INCORPORATED

By

  
Joel B. Burr, Jr., President

SUPPLEMENTAL INFORMATION

Re: Application for Permit to Drill  
Noo-Navajo No. 2 Well, 330' FNL, 1750' FEL Sec. 13, T20N, R6W  
McKinley County, New Mexico

The following supplemental information is submitted to comply with NTL-6 and should be read in conjunction with form 9-331C, "Application for Permit to Drill, Deepen or Plug Back":

Move in, rig up rotary tools, drill 9-7/8" hole to 100'; run new 7-5/8" 20 lb. K-55 casing and cement with 75 sacks of Class B + 2% calcium chloride. Wait on cement 12 hours, install 6" Guiberson 600 Series blow-out preventer. Blow-out preventer will be pressure tested prior to drilling out from under surface, and tested daily to insure sound mechanical operations.

Well will be drilled with native mud to 1800'; from 1800' to TD a gel chemical system will be used with the following characteristics:

Weight 9 - 9.5 lb. per gallon  
Viscosity 35 - 60 seconds per quart  
Water loss - less than 10 c.c.

No cores or DSTs will be taken. Upon reaching TD, IES, FDS and Gamma Ray logs will be run. No abnormal temperatures or pressures are expected.

Assuming well is determined to be a producer, new 4 1/2" 9.5 lb. K-55 casing will be set at 3,000 feet and cemented with 125 sacks of Class B + 2% calcium chloride.

Anticipated formation tips are as follows:

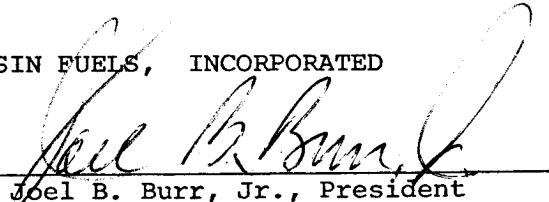
La Ventana	1060'
Chacra	1300'
Cliffhouse	1850'
Menefee	1930'
Point Lookout	2720'

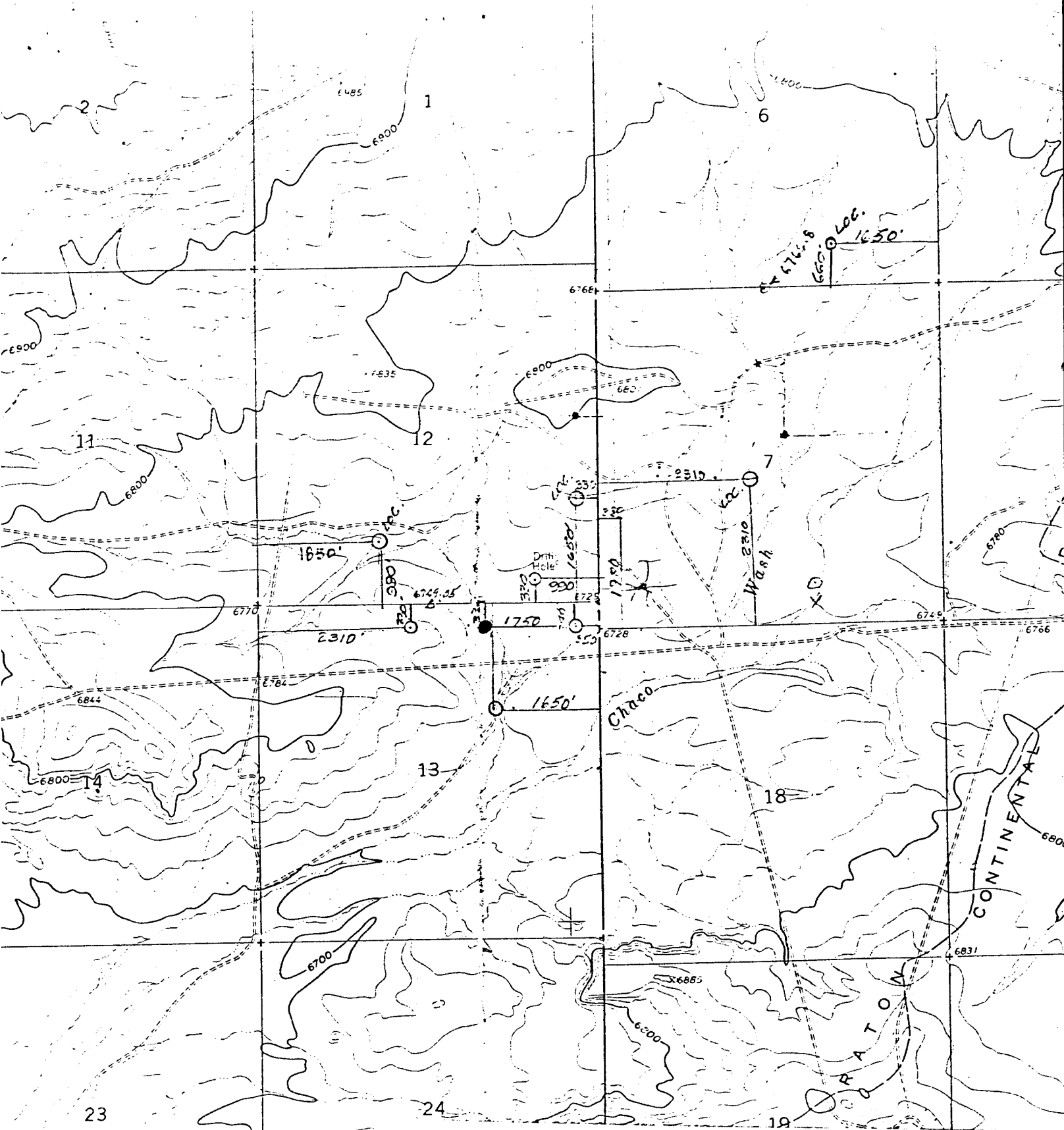
Kelly cocks, floats at the bit, monitoring equipment on the mud system, a sub on the floor with a full opening valve to be stabbed into drill pipe when the kelly is not in the string will be available for use in blow-out control.

Dated: November 7, 1977

BASIN FUELS, INCORPORATED

By

  
Joel B. Burr, Jr., President



VICINITY MAP  
BASIN FUELS, INCORPORATED

Well Locations in SE 1/4 Sec. 12, E N/2 Sec. 13,  
T20N, R6W, N.M.P.M., McKinley County,  
New Mexico

Scale: 1" = 2000'

Date: 10/29/77

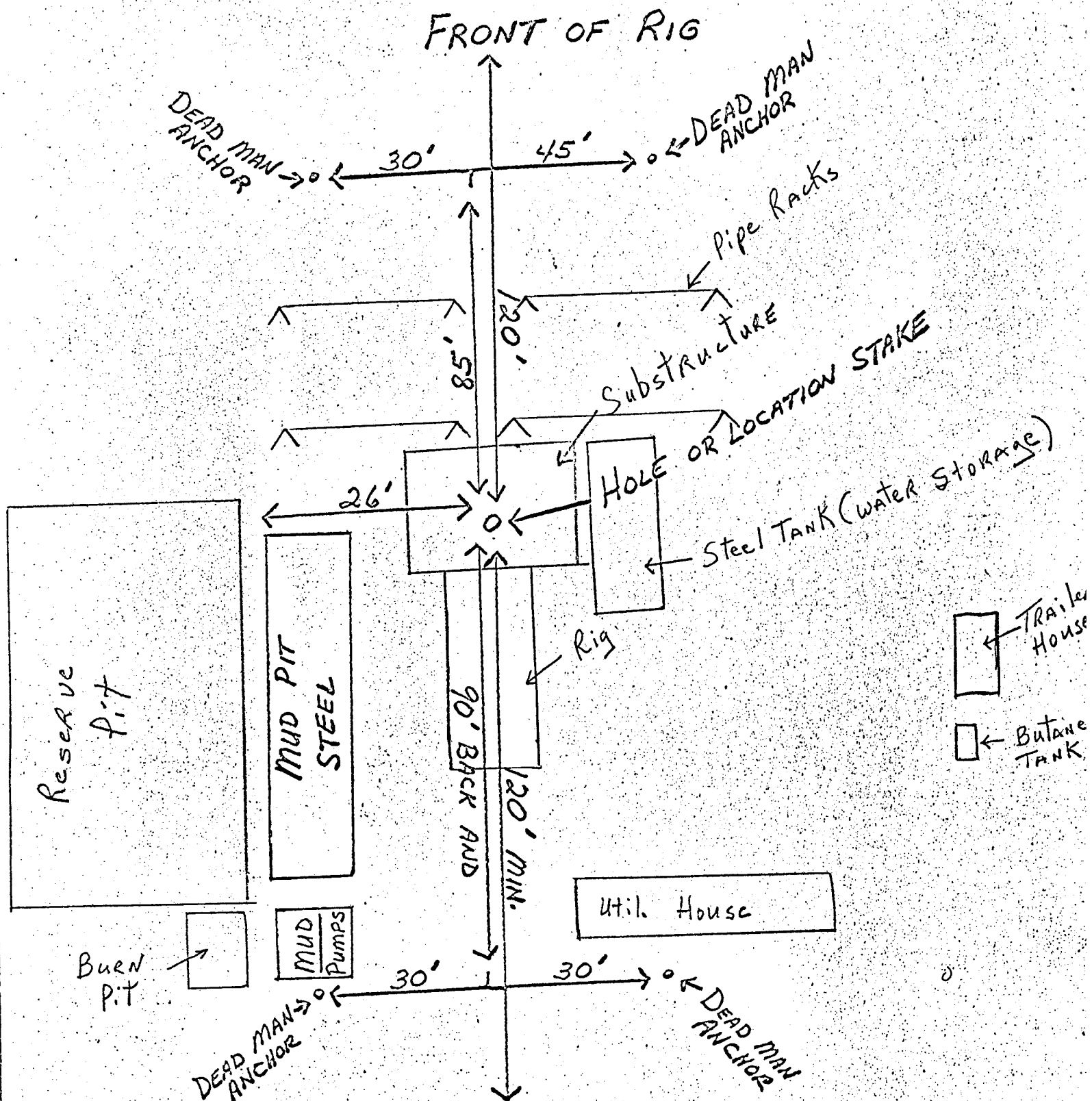
COLEMAN DRILLING CO.

P. O. BOX 1915

FARMINGTON, N. M. 87401

PHONE 508 / 325-6692

RIG #1



RESERVE PIT 150' X 150' X 5' DEEP