

| | |
|------------------------|--|
| NO. OF COPIES RECEIVED | |
| DISTRIBUTION | |
| SANTA FE | |
| FILE | |
| U.S.G.S. | |
| LAND OFFICE | |
| OPERATOR | |

NEW MEXICO OIL CONSERVATION COMMISSION

36-631-20608

Form C-101
Revised 1-1-65

| | |
|--------------------------------|--|
| 5A. Indicate Type of Lease | |
| STATE <input type="checkbox"/> | FEED <input checked="" type="checkbox"/> |

5. State Oil & Gas Lease No.

APPLICATION FOR PERMIT TO DRILL, DEEPEN, OR PLUG BACK

| | | | |
|---|--|--|--|
| 1a. Type of Work | | 7. Unit Agreement Name | |
| b. Type of Well OIL WELL <input checked="" type="checkbox"/> GAS WELL <input type="checkbox"/> OTHER <input type="checkbox"/> | | Hospah Sand Unit | |
| 2. Name of Operator Tesoro Petroleum Corp. | | 8. Farm or Lease Name Hospah Sand Unit | |
| 3. Address of Operator 2000 1st of Denver Plaza Bldg., 633 17th St., Denver, CO 80202 | | 9. Well No. 95 | |
| 4. Location of Well UNIT LETTER <u>B</u> LOCATED <u>2550</u> FEET FROM THE <u>east</u> LINE AND <u>350</u> FEET FROM THE <u>north</u> LINE OF SEC. <u>1</u> TWP. <u>17N</u> RGE. <u>9W</u> NMPM | | 10. Field (and Subfield) or Wildcat Hospah - Lower Sand | |
| 11. Elevations (Show whether DE, RT, etc.) 6957' GR | | 12. County McKinley | |
| 21A. Kind & Status Plug, Bond NM Blanket | | 19A. Formation Upper & Lower Hospah | |
| 21B. Drilling Contractor Salazar Drilling Co. | | 20. Rotary or C.T. Rotary | |
| 22. Approx. Date Work will start 7/1/80 | | | |

PROPOSED CASING AND CEMENT PROGRAM

| SIZE OF HOLE | SIZE OF CASING | WEIGHT PER FOOT | SETTING DEPTH | SACKS OF CEMENT | EST. TOP |
|--------------|----------------|-----------------|---------------|-----------------|----------|
| 12 1/4" | 8 5/8" | 23 | 40' | 30 | surface |
| 7 7/8" | 5 1/2" | 14 | 1700' | 125 | 1100' |

1. Drill 12 1/4" hole to 40', set 8 5/8" csg. and cement to surface.
2. Drill 7 7/8" hole to TD using fresh water and gel-chemical mud.
3. Run Dual Induction Laterlog from TD to 40'.
4. Run and set 5 1/2" casing string at TD and cement w/125 sx.
5. An attempt will be made to complete this well in the Lower Hospah Sand through perforations. It appears that the Lower Hospah has never been tested within the Sand Unit.
6. If the Lower Hospah is non-productive, the well will be plugged back and completed in the Upper Hospah Sand.

APPROVAL VALID
FOR 90 DAYS UNLESS
RENEWED OR REVOKED

9-23-80

IN ABOVE SPACE DESCRIBE PROPOSED PROGRAM: IF PROPOSAL IS TO DEEPEN OR PLUG BACK, GIVE DATA ON PRESENT PRODUCTIVE ZONE AND PROPOSED NEW PRODUCTIVE ZONE. GIVE BLOWOUT PREVENTER PROGRAM, IF ANY.

I hereby certify that the information above is true and complete to the best of my knowledge and belief.

Signed Kang J. Kaltenbracker Title District Engineer Date 6/17/80

(This space for State Use)

SUPERVISOR DISTRICT # 3

APPROVED BY Frank J. Chang TITLE DATE JUN 25 1980

CONDITIONS OF APPROVAL, IF ANY:

**NEW MEXICO OIL CONSERVATION COMMISSION
WELL LOCATION AND ACREAGE DEDICATION PLAT**

Form C-102
Supersedes C-128
Effective 1-1-65

All distances must be from the outer boundaries of the Section.

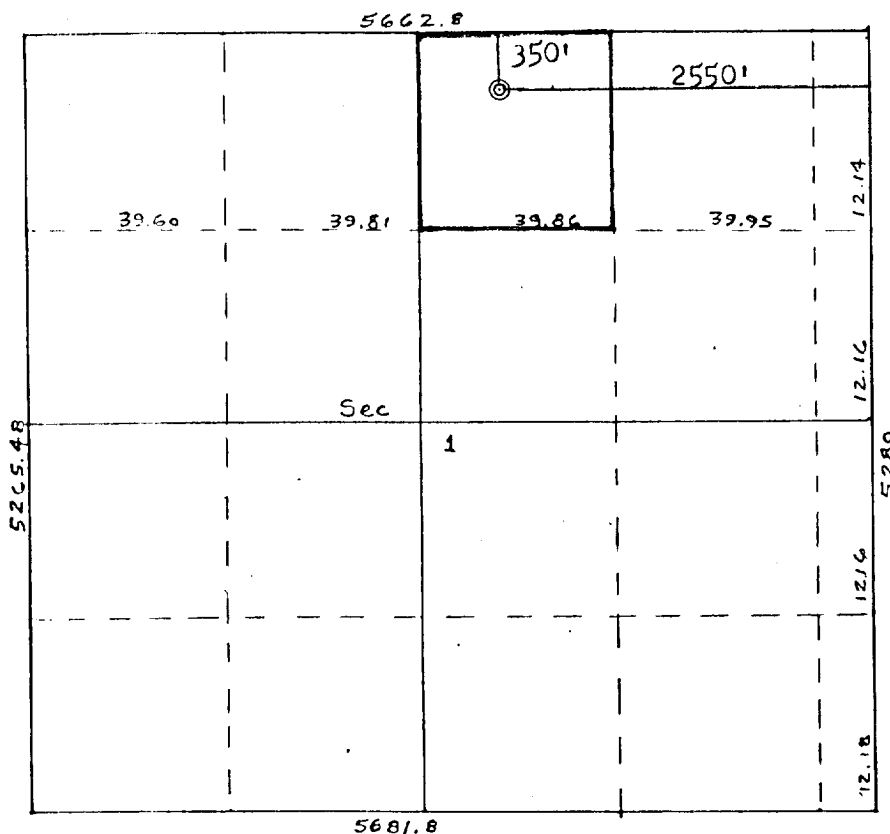
| | | | | | |
|---|---|------------------------|---|---------------------------|---------------------------------------|
| Operator TESORO PETROLEUM CORPORATION | | | Lease HOSPAP SAND UNIT | | Well No. 95 |
| Init Letter B | Section 1 | Township 17N | Range 9W | County McKinley | |
| Actual Footage Location of Well: 350 feet from the North line and 2550 feet from the East line | | | | | |
| Ground Level Elev: 6957 | Producing Formation Lower Hospah Sand | | Pool <i>Hospah</i> Lower Sand | | Dedicated Acreage: 40 Acres |

1. Outline the acreage dedicated to the subject well by colored pencil or hachure marks on the plat below.
2. If more than one lease is dedicated to the well, outline each and identify the ownership thereof (both as to working interest and royalty).
3. If more than one lease of different ownership is dedicated to the well, have the interests of all owners been consolidated by communitization, unitization, force-pooling, etc?

☐ Yes ☐ No If answer is "yes," type of consolidation _____

If answer is "no," list the owners and tract descriptions which have actually been consolidated. (Use reverse side of this form if necessary.) _____

No allowable will be assigned to the well until all interests have been consolidated (by communitization, unitization, forced-pooling, or otherwise) or until a non-standard unit, eliminating such interests, has been approved by the Commission.



Scale: 1" = 1320'

CERTIFICATION

I hereby certify that the information contained herein is true and complete to the best of my knowledge and belief.

Name
Kary J. Kattenbecker
Position
District Engineer
Company
Tesoro Petroleum Corp.
Date
6/11/80

I hereby certify that the well location shown on this plat was plotted from field notes of actual surveys made by me or under my supervision, and that the same is true and correct to the best of my knowledge and belief.

Date Surveyed
June 9, 1980
Registered Professional Engineer and Land Surveyor
Fred B. Kerr Jr.
Fred B. Kerr Jr.
Certificate No.
3950