

UNITED STATES
DEPARTMENT OF THE INTERIOR
GEOLOGICAL SURVEY

SUNDRY NOTICES AND REPORTS ON WELLS

(Do not use this form for proposals to drill or to deepen or plug back to a different reservoir. Use Form 9-331-C for such proposals.)

1. oil ☐ well gas ☐ well other ☒ Injection
2. NAME OF OPERATOR
Tenneco Oil Company
3. ADDRESS OF OPERATOR
P. O. Box 3249, Englewood, CO 80155
4. LOCATION OF WELL (REPORT LOCATION CLEARLY. See space 17 below.)
AT SURFACE: 1532' FNL 2718' FEL
AT TOP PROD. INTERVAL:
AT TOTAL DEPTH:

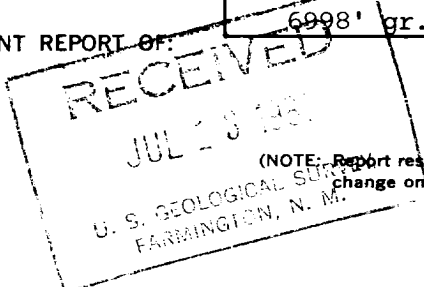
16. CHECK APPROPRIATE BOX TO INDICATE NATURE OF NOTICE, REPORT, OR OTHER DATA

REQUEST FOR APPROVAL TO:

TEST WATER SHUT-OFF ☐
FRACTURE TREAT ☐
SHOOT OR ACIDIZE ☐
REPAIR WELL ☐
PULL OR ALTER CASING ☐
MULTIPLE COMPLETE ☐
CHANGE ZONES ☐
ABANDON* ☐
(other) Conversion

SUBSEQUENT REPORT OF:

☐
☐
☐
☐
☐
☐
☐
☐
☐
☐



(NOTE: Report results of multiple completion or zone change on Form 9-330.)

17. DESCRIBE PROPOSED OR COMPLETED OPERATIONS (Clearly state all pertinent details, and give pertinent dates, including estimated date of starting any proposed work. If well is directionally drilled, give subsurface locations and measured and true vertical depths for all markers and zones pertinent to this work.)*

Tenneco Oil proposes to convert the above captioned well from an air injection well to a water injection well in accordance with the attached detailed procedure.



Subsurface Safety Valve: Manu. and Type _____ Set @ _____ Ft.

18. I hereby certify that the foregoing is true and correct

SIGNED [Signature] TITLE Adm. Supv. DATE 7/9/81

APPROVED BY _____ (This space for Federal or State office use) TITLE _____ DATE _____

APPROVED BY _____
CONDITIONS OF APPROVAL, IF ANY:

[Signature]
JUL 15 1981
For JAMES F. SIMS
DISTRICT ENGINEER

*See Instructions on Reverse Side

NMOCC

LEASE HOSPAN

WELL NO. 67

13^{3/4}" OD, 54.5 LB, K-55 CSG.W/ 150 SX

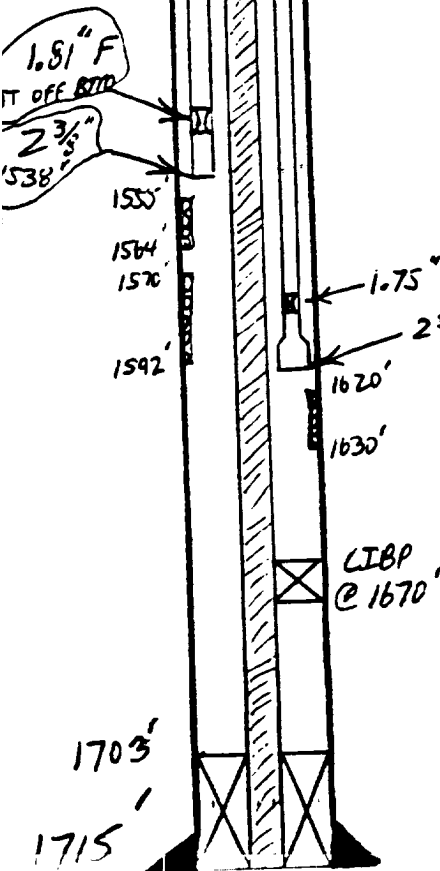
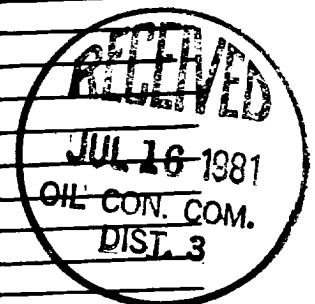
TOC @ SURFACE

47'

4 1/2" OD, 10.5 LB, K-55 CSG.W/ 920 SX SY
ALUMINATE CMT
TOC @ SURFACE

DETAILED PROCEDURE

- 1) MAKEUP. NDBOP. NUBOP.
- 2) POOH W/ 2 3/8" TBG AND HEAT SHIELD IN LOWER (NORTH) STRING.
- 3) RIM W/ 2 3/8" TBG AND 4 1/2" BAKER LOK-SET PKR.
- 4) SET PKR @ $\pm 1550'$.
- 5) ESTABLISH INJECTION RATE W/ FSW.
- 6) NDBOP. NUWH.
- 7) REMOVE. PLACE ON INJECTION.



.....

.....

STRING
NORTH

STRING

.....