

STATE OF NEW MEXICO
ENERGY AND MINERALS DEPARTMENT

OIL CONSERVATION DIVISION
P. O. BOX 2088
SANTA FE, NEW MEXICO 87501

30-031-20632

Form C-101
Revised 10-1-70

| | |
|------------------------|--|
| NO. OF COPIES RECEIVED | |
| DISTRIBUTION | |
| STATE | |
| FILE | |
| U.S.G.S. | |
| LAND OFFICE | |
| OPERATOR | |

5A. Indicate Type of Lease
STATE ☐ FEDERAL ☒

5. State Oil & Gas Lease No.
0-9725

APPLICATION FOR PERMIT TO DRILL, DEEPEN, OR PLUG BACK

1a. Type of Work
b. Type of Well DRILL ☒ DEEPEN ☐ PLUG BACK ☐
c. Type of Well OIL WELL ☒ GAS WELL ☐ OTHER ☐ SINGLE ZONE ☐ MULTIPLE ZONE ☐
2. Name of Operator
Zenith Energy Corporation
3. Address of Operator
P.O. Box 1038 Kilgore, Texas 75662
4. Location of Well UNIT LETTER B LOCATED 330 FEET FROM THE North LINE
AND 2310 FEET FROM THE East LINE OF SEC. 29 TWP. 16N RGE. 6W NMPM

7. Unit Agreement Name

8. Form or Lease Name

SFPRR

9. Well No.

35

10. Field and Pool, or Wildcat
Miguel Creek Gallup

12. County
McKinley

| | | |
|---|--|--|
| 15. Proposed Depth 800' | 15A. Formation Hospah | 20. Rotary or C.T. Rotary |
| 21. Elevations (Show whether DT, RT, etc.) 6424.6 GL | 21A. Kind & Status Plug. Bond Blanket-on file | 21B. Drilling Contractor A & M Drilling |
| | | 22. Approx. Date Work will start 9-8-80 |

PROPOSED CASING AND CEMENT PROGRAM

| SIZE OF HOLE | SIZE OF CASING | WEIGHT PER FOOT | SETTING DEPTH | SACKS OF CEMENT | EST. TOP |
|--------------|----------------|-----------------|---------------|-----------------|----------|
| 7 7/8" - | 4 1/2" | 11 lbs. | 800' | 160 class H | Surface |

APPROVAL VALID
FOR 90 DAYS UNLESS
DRILLING COMMENCED,

EXPIRES 12-7-80



IN ABOVE SPACE DESCRIBE PROPOSED PROGRAM; IF PROPOSAL IS TO DEEPEN OR PLUG BACK, GIVE DATA ON PRESENT PRODUCTIVE ZONE AND PROPOSED NEW PRODUCTIVE ZONE. GIVE BLOWOUT PREVENTER PROGRAM, IF ANY.

I hereby certify that the information above is true and complete to the best of my knowledge and belief.

Signed Darryl J. Blum Title Representative Date 9-2-80

(This space for State Use)

APPROVED BY Frank J. Chang TITLE SUPERVISOR DISTRICT #3 DATE SEP 8 1980

CONDITIONS OF APPROVAL, IF ANY:

**NEW MEXICO OIL CONSERVATION COMMISSION
WELL LOCATION AND ACREAGE DEDICATION PLAT**

Form C-102
Supersedes C-12H
Effective 1-1-65

All distances must be from the outer boundaries of the Section.

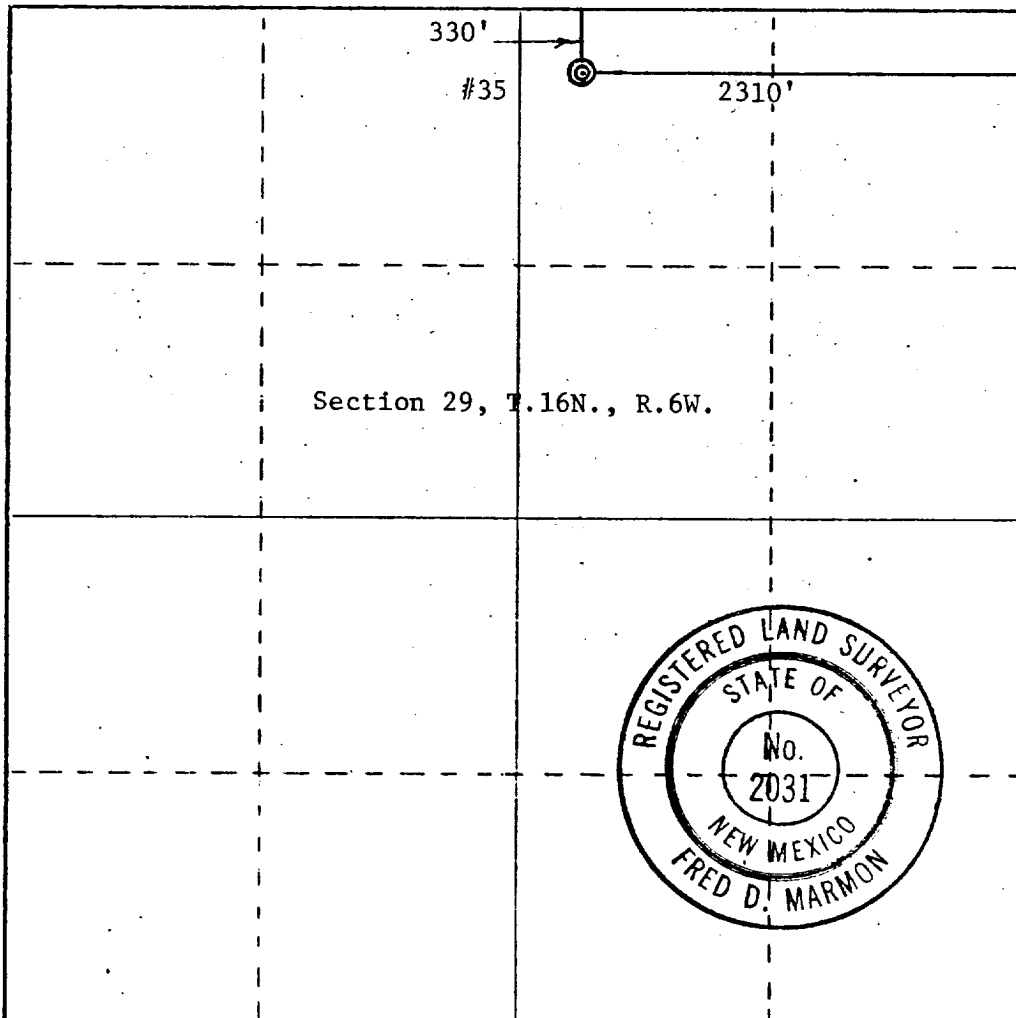
| | | | | |
|--|--|--|---------------------------------------|---------------------------|
| Operator <i>Zenith Energy Corp</i> | | Lease <i>SFPRR</i> | | Well No. 35 |
| Unit Letter | Section 29 | Township 16 North | Range 6 West | County McKinley |
| Actual Footage Location of Well: | | | | |
| 330 feet from the North line and | | 2310 feet from the East line | | |
| Ground Level Elev. 6424.6 | Producing Formation <i>Gallegos</i> | Pool <i>Miguel Creek Ext</i> | Dedicated Acreage: 40 Acres | |

1. Outline the acreage dedicated to the subject well by colored pencil or hatchure marks on the plat below.
2. If more than one lease is dedicated to the well, outline each and identify the ownership thereof (both as to working interest and royalty).
3. If more than one lease of different ownership is dedicated to the well, have the interests of all owners been consolidated by communitization, unitization, force-pooling, etc?

☐ Yes ☐ No If answer is "yes," type of consolidation _____

If answer is "no," list the owners and tract descriptions which have actually been consolidated. (Use reverse side of this form if necessary.) _____

No allowable will be assigned to the well until all interests have been consolidated (by communitization, unitization, forced-pooling, or otherwise) or until a non-standard unit, eliminating such interests, has been approved by the Commission.



CERTIFICATION

I hereby certify that the information contained herein is true and complete to the best of my knowledge and belief.

Darryl Z. Blum
Name

Position

Representative

Company

Zenith Energy Corporation

Date

9-2-80

I hereby certify that the well location shown on this plat was plotted from field notes of actual surveys made by me or under my supervision, and that the same is true and correct to the best of my knowledge and belief.

Date Surveyed

August 27, 1980

Registered Professional Engineer and/or Land Surveyor

Fred D. Marmion
Certificate No.

2031

