

NO. OF COPIES RECEIVED

DISTRIBUTION

SANTA FE

FILE

U.S.G.S.

LAND OFFICE

OPERATOR

NEW MEXICO OIL CONSERVATION COMMISSION

30-031-20635

Rev. 1-1-80
Revised 1-4-65

5A. Indicate Type of Lease

STATE ☐ FILE ☒

5. State Oil & Gas Lease No.

APPLICATION FOR PERMIT TO DRILL, DEEPEN, OR PLUG BACK

1a. Type of Work

b. Type of Well DRILL ☒ DEEPEN ☐ PLUG BACK ☐

OIL WELL ☒ GAS WELL ☐ OTHER ☐ SINGLE ZONE ☐ MULTIPLE ZONE ☐

2. Name of Operator
SANTA FE ENERGY COMPANY

3. Address of Operator
One Security Park, 7200 I-40 West, Amarillo, Texas 79106

4. Location of Well UNIT LETTER K LOCATED 1980 FEET FROM THE South LINE
1980 FEET FROM THE West LINE OF SEC. 13 TWP. 17N RGE. 8W NMPM

7. Unit Agreement Name

8. Farm or Lease Name
B B S Ranch 13

9. Well No.
1

10. Field and Pool, or Wildcat
Wildcat *Entrada*

12. County
McKinley

19. Proposed Depth
4250'

19A. Formation
Entrada

20. Rotary or C.T.
Rotary

21. Elevations (Show whether DF, RT, etc.)
6819' G.L.

21A. Kind & Status Plug. Bond
Statewide

21B. Drilling Contractor
Kenai

22. Approx. Date Work will start
10/15/80

23. PROPOSED CASING AND CEMENT PROGRAM

SIZE OF HOLE	SIZE OF CASING	WEIGHT PER FOOT	SETTING DEPTH	SACKS OF CEMENT	EST. TOP
12-1/4"	8-5/8"	24.0	250'	250	Surface
7-7/8"	5-1/5"	15.50	T.D.	300	1500

It is proposed to drill this well with rotary tools, using water base mud as circulating medium, and test the Entrada Formation. Possible productive intervals in the Entrada will be completed. Production casing will be cemented in such a manner to protect the Dakota and Gallup formations.

ESTIMATED FORMATION TOPS

Point Lookout	520'	Morrison	2720'
Gallup	1620'	Entrada	3930'
Dakota	2420'		

The NE/4, SW/4 Section 13 is dedicated to this well.

The gas for this well is not committed.

APPROVAL VALID
FOR 90 DAYS UNLESS
DRILLING COMMENCED,

EXPIRES 12-24-80

4. ABOVE SPACE DESCRIBE PROPOSED PROGRAM: IF PROPOSAL IS TO DEEPEN OR PLUG BACK, GIVE DATA ON PRESENT PRODUCTIVE ZONE AND PROPOSED NEW PRODUCTIVE ZONE. GIVE BLOWOUT PREVENTER PROGRAM, IF ANY.

I hereby certify that the information above is true and complete to the best of my knowledge and belief.

FOR: SANTA FE ENERGY COMPANY

Signed Ewell N. Walsh ORIGINAL SIGNED BY Ewell N. Walsh Title President, Walsh Engr. & Prod. Corp. Date 9/23/80

(This space for State Use)

APPROVED BY Frank J. Long TITLE SUPERVISOR DISTRICT # 3 DATE SEP 25 1980

CONDITIONS OF APPROVAL, IF ANY:

All distances must be from the outer boundaries of the Section.

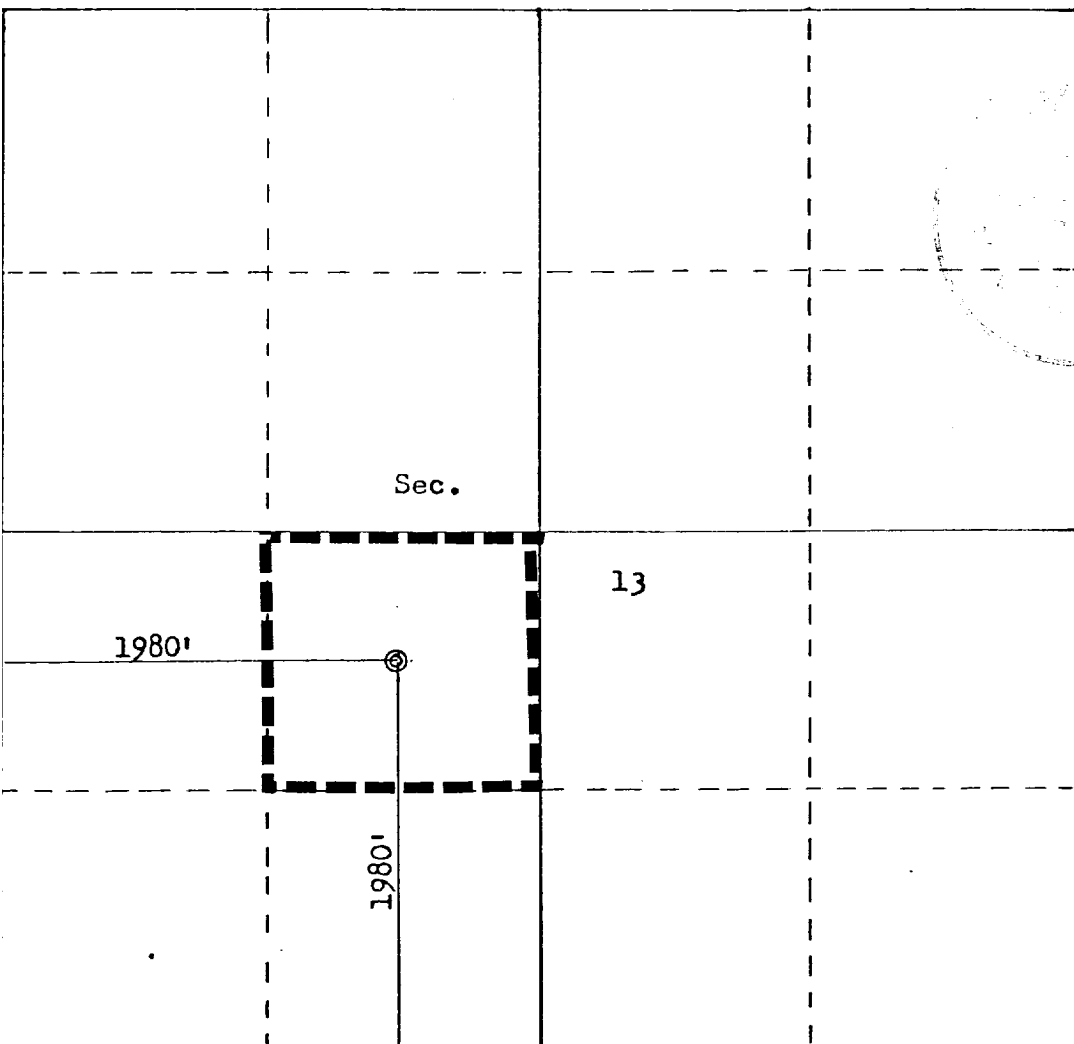
Operator SANTA FE ENERGY COMPANY			Lease BBS RANCH 13		Well No. 1
Unit Letter K	Section 13	Township 17N	Range 8W	County McKinley	
Actual Footage Location of Well: 1980 feet from the South line and 1980 feet from the West line					
Ground Level Elev. 6819	Producing Formation Entrada		Pool Wildcat		Dedicated Acreage: 40 Acres

1. Outline the acreage dedicated to the subject well by colored pencil or hachure marks on the plat below.
2. If more than one lease is dedicated to the well, outline each and identify the ownership thereof (both as to working interest and royalty).
3. If more than one lease of different ownership is dedicated to the well, have the interests of all owners been consolidated by communitization, unitization, force-pooling, etc?

☐ Yes ☐ No If answer is "yes," type of consolidation _____

If answer is "no," list the owners and tract descriptions which have actually been consolidated. (Use reverse side of this form if necessary.) _____

No allowable will be assigned to the well until all interests have been consolidated (by communitization, unitization, forced-pooling, or otherwise) or until a non-standard unit, eliminating such interests, has been approved by the Commission.



Scale: 1"=1000'

CERTIFICATION	
I hereby certify that the information contained herein is true and complete to the best of my knowledge and belief.	
FOR: SANTA FE ENERGY COMPANY	
ORIGINAL SIGNED BY	
Name	EWELL N. WALSH
Ewell N. Walsh, P.E.	
Position	President
Company	Walsh Engr. & Prod. Corp.
Date	9/23/80
I hereby certify that the well location shown on this plat was plotted from field notes of actual surveys made by me or under my supervision, and that the same is true and correct to the best of my knowledge and belief.	
Date Surveyed	September 2, 1980
Registered Professional Engineer and Land Surveyor	Fred B. Kerr Jr.
Certificate No.	3950

SANTA FE ENERGY COMPANY
B B S RANCH 13, NO. 1
1980'FSL, 1980'FWL, SEC. 13-T17N-R8W
McKinley County, New Mexico

1. Surface Casing.
See Application for Permit to Drill.
2. Spools and Flanges
 - A. Surface Casing - 8", Series 600, 2000 psi W.P.
 - B. Production, 8", Series 600, 2000 psi W.P.
 - C. Tubing Head - Series 600, 2000 psi W.P.
3. Intermediate Casing.
None
4. Blowout Preventers
Production Hole - 10", 3000 psi
Fill, Kill and Choke Manifold - 5000 psi. W.P.
5. Additional Equipment (If Necessary)
 - A. Kelly Cock
 - B. Bit Float
 - C. Degasser
 - D. Pit Level Indicator
 - F. Sub with valve for drill pipe.
6. Anticipated Bottom Hole Pressure
1700 psi. Current mud program is for 9.2 lb./gal mud
with hydrostatic head of 2020 psi at 4250 feet. Mud
weight will be increased if necessary for higher pressures.
7. Drilling Fluid
Gel-Water

Blowout Preventer Diagram

SANTA FE ENERGY COMPANY
B B S RANCH 13, No. 1
1980' FSL, 1980' FWL, SEC. 13-T17N-R8W
McKinley County, New Mexico

PLAN VIEW-CHOKE MANIFOLD

