

NO. OF COPIES RECEIVED	
DISTRIBUTION	
SANTA FE	
FILE	
U.S.G.S.	
LAND OFFICE	
OPERATOR	

# NEW MEXICO OIL CONSERVATION COMMISSION

30-031-20636

Form O-101  
Revised 1-1-65

5A. Indicate Type of Lease  
STATE ☐ FILE ☒

5. State Oil & Gas Lease No.

## APPLICATION FOR PERMIT TO DRILL, DEEPEN, OR PLUG BACK

1a. Type of Work DRILL <input checked="" type="checkbox"/> DEEPEN <input type="checkbox"/> PLUG BACK <input type="checkbox"/>		7. Unit Agreement Name
b. Type of Well OIL WELL <input checked="" type="checkbox"/> GAS WELL <input type="checkbox"/> OTHER <input type="checkbox"/> SINGLE ZONE <input type="checkbox"/> MULTIPLE ZONE <input type="checkbox"/>		8. Farm or Lease Name BBS Ranch 14
2. Name of Operator Santa Fe Energy Co.		9. Well No. 1
3. Address of Operator One Security Park, 7200 I-40, Amarillo, Texas 79106		10. Field and Pool, or Wildcat Wildcat Entrada
4. Location of Well UNIT LETTER K LOCATED 1980 FEET FROM THE South LINE AND 1980 FEET FROM THE West LINE OF SEC. 14 TWP. 17N RGE. 8W NMPM		12. County McKinley
11. Elevations (Show whether DF, RT, etc.) 6882' G. L.		19. Proposed Depth 4250'
21A. Kind & Status Plug. Bond Statewide		19A. Formation Entrada
21B. Drilling Contractor Kenai		20. Rotary or C.T. Rotary
22. Approx. Date Work will start SEP-15-80		

### PROPOSED CASING AND CEMENT PROGRAM

SIZE OF HOLE	SIZE OF CASING	WEIGHT PER FOOT	SETTING DEPTH	SACKS OF CEMENT	EST. TOP
12 1/4	8 5/8"	24.0	250	250	Surface
7 7/8	5 1/2"	15.50	T.D.	300	1500

It is proposed to drill this well with rotary tools, using water base mud as circulating medium, and test the Entrada Formation. Possible productive intervals in the Entrada will be completed. Production casing will be cemented in such a manner to protect the Dakota and Gallup formations.

### ESTIMATED FORMATION TOPS

Point Lookout	590'	Morrison	2790'
Gallup	1690'	Entrada	4000'
Dakota	2490'		

The NE/4, SW/4 Section 14 is dedicated to this well.

The gas for this well is not committed.

APPROVAL VALID  
FOR 90 DAYS UNLESS  
DRILLING COMMENCED,

EXPIRES 12-24-80

FOR: SANTA FE ENERGY CO.

ABOVE SPACE DESCRIBE PROPOSED PROGRAM: IF PROPOSAL IS TO DEEPEN OR PLUG BACK, GIVE DATA ON PRESENT PRODUCTIVE ZONE AND PROPOSED NEW PRODUCTION ZONE. GIVE BLOWOUT PREVENTER PROGRAM, IF ANY.

I hereby certify that the information above is true and complete to the best of my knowledge and belief.

ORIGINAL SIGNED BY  
EWELL N. WALSH  
President, Walsh Engineering & Production Corporation  
Date 9/23/80

(This space for State Use)

SUPERVISOR DISTRICT # 3

SEP 25 1980

APPROVED BY [Signature] TITLE \_\_\_\_\_ DATE \_\_\_\_\_  
CONDITIONS OF APPROVAL, IF ANY:

All distances must be from the outer boundaries of the Section.

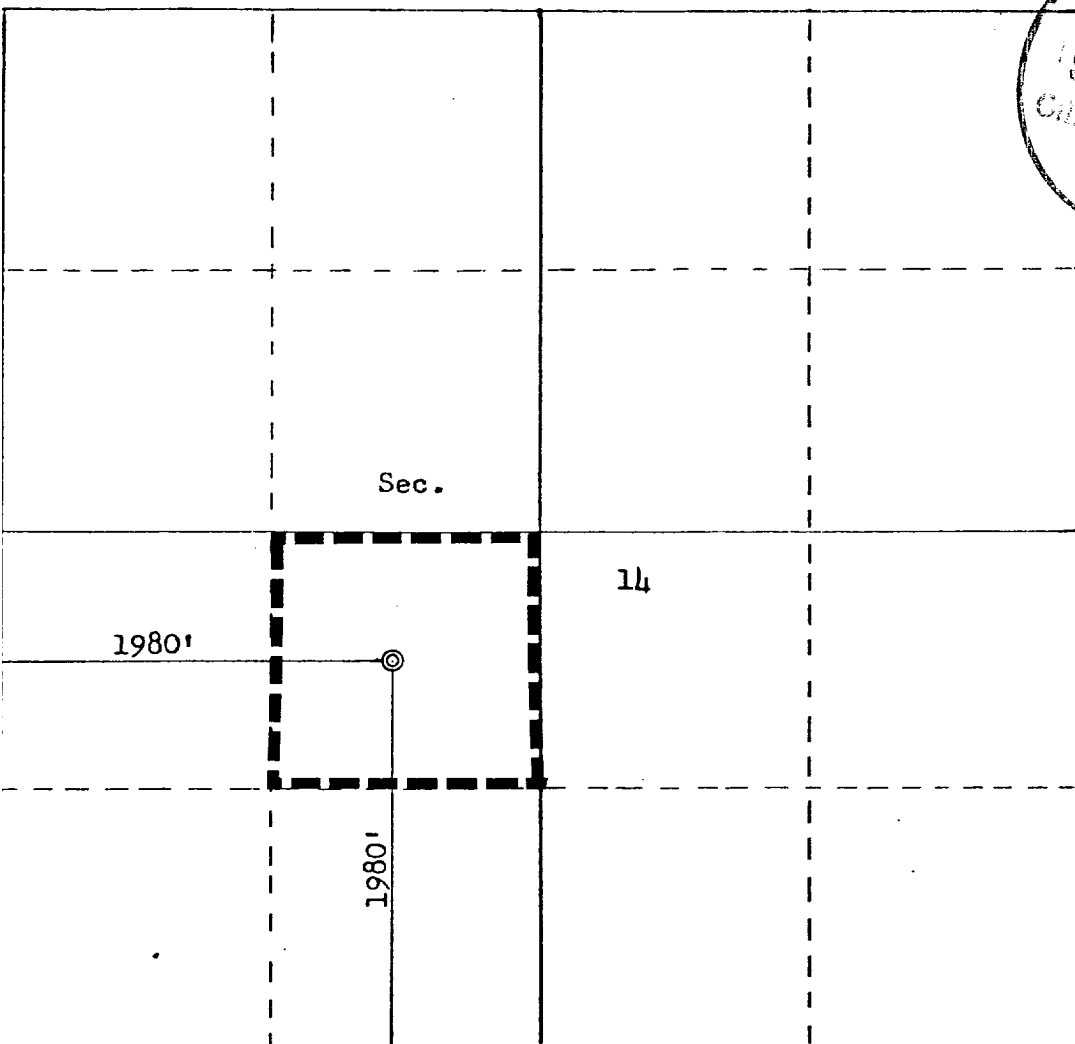
Operator <b>SANTA FE ENERGY COMPANY</b>			Lease <b>BBS RANCH 14</b>		Well No. <b>1</b>
Unit Letter <b>K</b>	Section <b>14</b>	Township <b>17N</b>	Range <b>8W</b>	County <b>McKinley</b>	
Actual Footage Location of Well: <b>1980</b> feet from the <b>South</b> line and <b>1980</b> feet from the <b>West</b> line					
Ground Level Elev. <b>6882</b>	Producing Formation <b>Entrada</b>		Pool <b>Wildcat</b>		Dedicated Acreage: <b>40</b> Acres

1. Outline the acreage dedicated to the subject well by colored pencil or hatchure marks on the plat below.
2. If more than one lease is dedicated to the well, outline each and identify the ownership thereof (both as to working interest and royalty).
3. If more than one lease of different ownership is dedicated to the well, have the interests of all owners been consolidated by communitization, unitization, force-pooling, etc?

☐ Yes ☐ No If answer is "yes," type of consolidation \_\_\_\_\_

If answer is "no," list the owners and tract descriptions which have actually been consolidated. (Use reverse side of this form if necessary.) \_\_\_\_\_

No allowable will be assigned to the well until all interests have been consolidated (by communitization, unitization, forced-pooling, or otherwise) or until a non-standard unit, eliminating such interests, has been approved by the Commission.



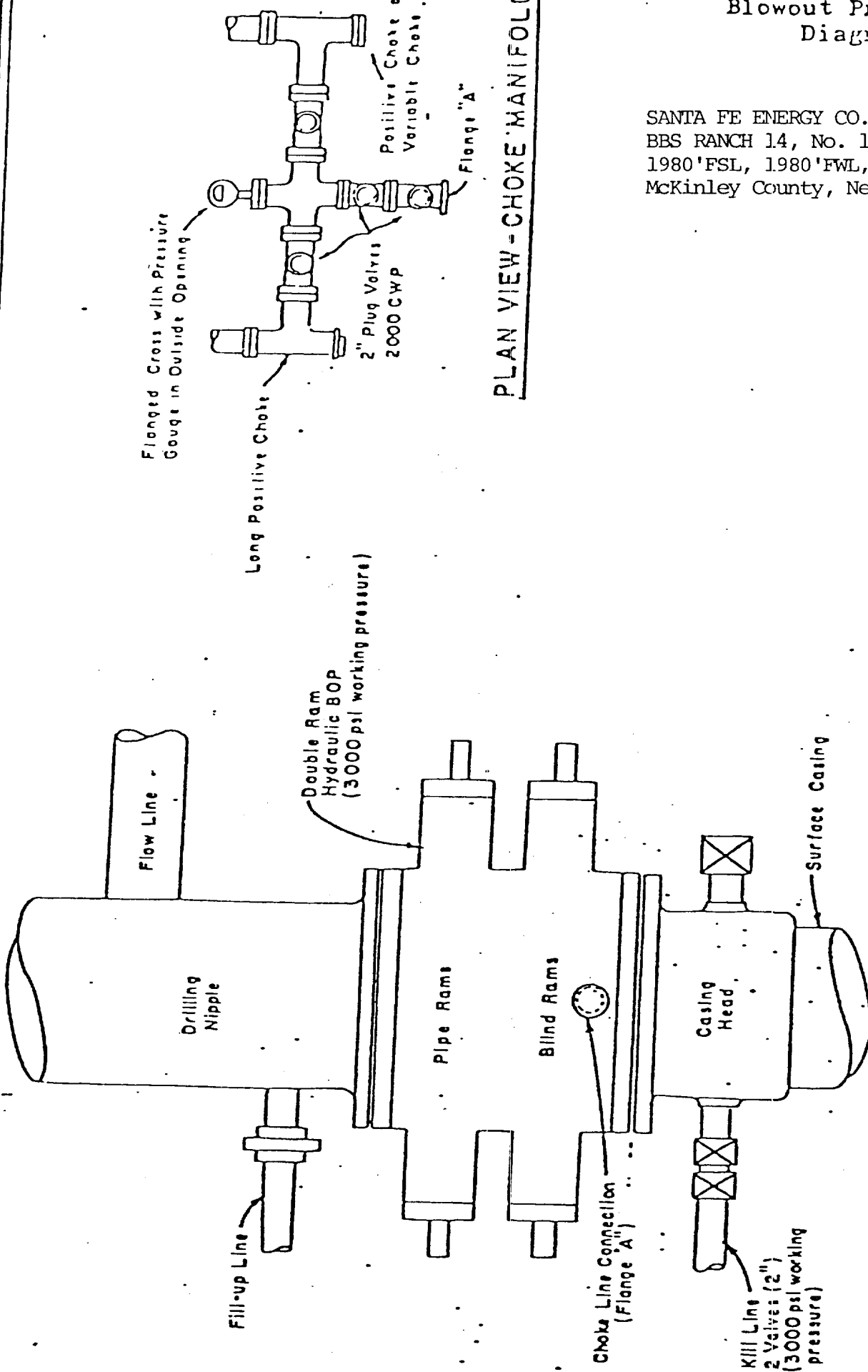
CERTIFICATION	
I hereby certify that the information contained herein is true and complete to the best of my knowledge and belief.	
FOR: SANTA FE ENERGY CO.	ORIGINAL SIGNED BY
Name: <b>EWELL N. WALSH</b>	
Position <b>Walsh Engineering &amp; Prod. Corp.</b>	
Company	Date <b>9/23/80</b>
I hereby certify that the well location shown on this plat was plotted from field notes of actual surveys made by me or under my supervision, and that the same is true and correct to the best of my knowledge and belief.	
Date Surveyed	<b>September 23, 1980</b>
Registered Professional Engineer and Land Surveyor	
<b>Fred B. Kent Jr.</b>	
Certificate No.	<b>3950</b>

SANTA FE ENERGY CO.  
BBS RANCH 14, No. 1  
1980'FSL, 1980'FWL, Sec. 14-T17N-R8W  
McKinley County, New Mexico

1. Surface Casing.  
See Application for Permit to Drill.
2. Spools and Flanges.
  - A. Surface Casing - 8", Series 600, 2000 psi W.P.
  - B. Production - 8", Series 600, 2000 psi W.P.
  - C. Tubing Head - Series 600, 2000 psi W.P.
3. Intermediate Casing.  
None
4. Blowout Preventers  
Production Hole - 10", 3000 psi.  
Fill, Kill and choke manifold - 5000 psi W.P.
5. Additional Equipment (If necessary)
  - A. Kelly Cock
  - B. Bit Float
  - C. Degasser
  - D. Pit Level Indicator
  - E. Sub with valve for drill pipe.
6. Anticipated Bottom Hole Pressure.  
1700 psi. Current mud program is for 9.2 lb./gal. mud with hydrostatic head of 2020 psi at 4250 feet. Mud weight will be increased if necessary for higher pressures.
7. Drilling Fluid.  
Gel-Water

# Blowout Preventer Diagram

SANTA FE ENERGY CO.  
BBS RANCH 14, No. 1  
1980' FSL, 1980' FWL, Sec. 14-T17N-R8W  
McKinley County, New Mexico



PLAN VIEW-CHOKE MANIFOLD

