

UNITED STATES  
DEPARTMENT OF THE INTERIOR  
GEOLOGICAL SURVEY

APPLICATION FOR PERMIT TO DRILL, DEEPEN, OR PLUG BACK

1a. TYPE OF WORK  
DRILL ☒ DEEPEN ☐ PLUG BACK ☐

b. TYPE OF WELL  
OIL WELL ☒ GAS WELL ☐ OTHER ☐ SINGLE ZONE ☐ MULTIPLE ZONE ☐

2. NAME OF OPERATOR  
WTR Oil Company

3. ADDRESS OF OPERATOR  
Drawer 11, Cortez, Colo 81321

4. LOCATION OF WELL (Report location clearly and in accordance with any State requirements.)\*  
At surface  
350' FEL & 330 FSL  
At proposed prod. zone

14. DISTANCE IN MILES AND DIRECTION FROM NEAREST TOWN OR POST OFFICE\*  
8 miles North of Crown Point, New Mexico

15. DISTANCE FROM PROPOSED\* LOCATION TO NEAREST PROPERTY OR LEASE LINE, FT. (Also to nearest drlg. unit line, if any)  
16. NO. OF ACRES IN LEASE  
320

18. DISTANCE FROM PROPOSED LOCATION\* TO NEAREST WELL, DRILLING, COMPLETED, OR APPLIED FOR, ON THIS LEASE, FT.  
19. PROPOSED DEPTH  
2300

21. ELEVATIONS (Show whether DF, RT, GB, etc.)  
6434

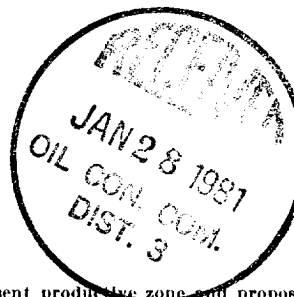
23. PROPOSED CASING AND CEMENTING PROGRAM

SIZE OF HOLE	SIZE OF CASING	WEIGHT PER FOOT	SETTING DEPTH
9"	7"	24#	90'
6 1/2"	4 1/2"	9.5#	2300'

QUANTITY OF CEMENT
Cement to Surface
Cement to surface

Plan to drill a 9' hole and set 60' of surface casing and cement to surface and test pipe. Drill a 6 1/2" hole with mud through the Dakota SS and test the Gallup, Hospah and Dakota SS. Run 4 1/2" casing cement to surface, perforate and test feasible SS.

Est. taps: Mesa Verde SS - surface  
Mancos Shale - 780  
Gallup & Hospah - 1134  
Shale - 1396  
Dakota SS - 2196



IN ABOVE SPACE DESCRIBE PROPOSED PROGRAM: If proposal is to deepen or plug back, give data on present productive zone and proposed new productive zone. If proposal is to drill or deepen directionally, give pertinent data on subsurface locations and measured and true vertical depths. Give blowout preventer program, if any.

24. SIGNATURE *James P. Hossley* TITLE Co-operator DATE 1-6-81

(This space for Federal or State office use)

PERMIT NO. APPROVAL DATE

APPROVED BY *James W. Hamby* TITLE DISTRICT ENGINEER DATE

ad 3m

1000

NEW MEXICO OIL CONSERVATION COMMISSION  
WELL LOCATION AND ACREAGE DEDICATION PLAT

Form C-102  
Supersedes C-128  
Effective 1-1-65

All distances must be from the outer boundaries of the Section.

Operator <b>W T R OIL COMPANY</b>			Lease NM-13053-A <i>Federal</i>		Well No. <del>18129</del> -1
Unit Letter <b>P</b>	Section <b>9</b>	Township <b>18 NORTH</b>	Range <b>12 WEST</b>	County <b>MCKINLEY</b>	
Actual Footage Location of Well: <div style="display: flex; justify-content: space-between;"> <span>230 feet from the <b>SOUTH</b> line and</span> <span>350 feet from the <b>EAST</b> line</span> </div>					
Ground Level Elev. <b>6434</b>	Producing Formation <b>Dakota</b>	Pool <b>WC</b>	Dedicated Acreage: <b>40</b> Acres		

1. Outline the acreage dedicated to the subject well by colored pencil or hatchure marks on the plat below.
2. If more than one lease is dedicated to the well, outline each and identify the ownership thereof (both as to working interest and royalty).
3. If more than one lease of different ownership is dedicated to the well, have the interests of all owners been consolidated by communitization, unitization, force-pooling, etc?

☐ Yes ☐ No If answer is "yes," type of consolidation \_\_\_\_\_

If answer is "no," list the owners and tract descriptions which have actually been consolidated. (Use reverse side of this form if necessary.) \_\_\_\_\_

No allowable will be assigned to the well until all interests have been consolidated (by communitization, unitization, forced-pooling, or otherwise) or until a non-standard unit, eliminating such interests, has been approved by the Commission.

CERTIFICATION

I hereby certify that the information contained herein is true and complete to the best of my knowledge and belief.

*James P. Woosley*  
Name

James P. Woosley  
Position

Co-operator

Company  
WTR Oil Company

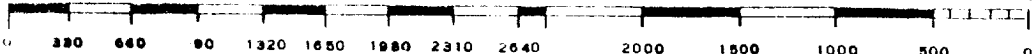
Date  
12-19-80

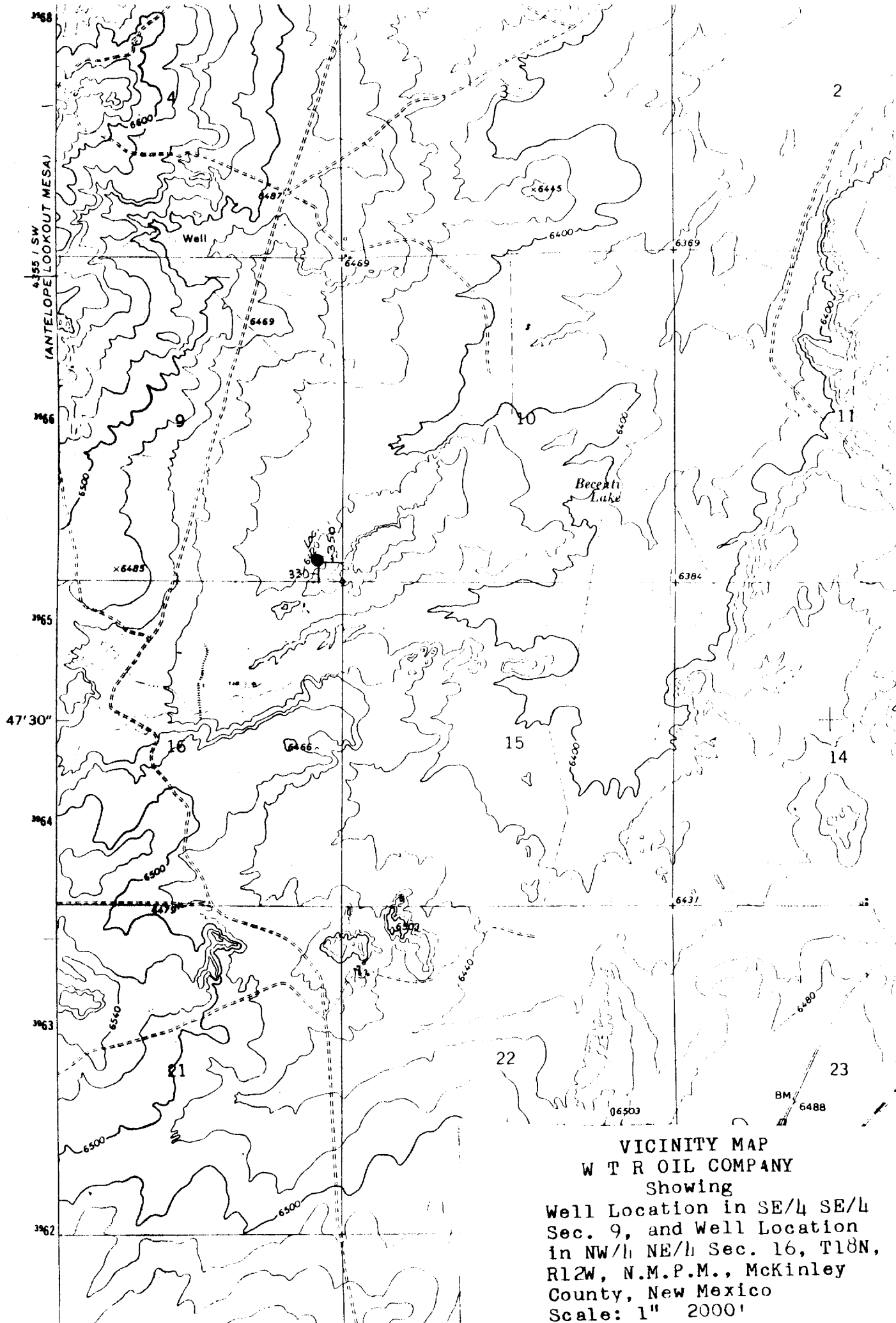
I hereby certify that the well location shown on this plat was plotted from field notes of actual surveys made by me or under my supervision, and that the same is true and correct to the best of my knowledge and belief.

16 December, 1980

*Curtis G. Stocking*  
Date Surveyed  
Registered Professional Engineer  
and/or Land Surveyor (LS)  
Curtis G. Stocking

5988  
Certificate No. \_\_\_\_\_





VICINITY MAP  
W T R OIL COMPANY  
Showing  
Well Location in SE/4 SE/4  
Sec. 9, and Well Location  
in NW/4 NE/4 Sec. 16, T18N,  
R12W, N.M.P.M., McKinley  
County, New Mexico  
Scale: 1" 2000'