

NO. OF COPIES RECEIVED	
DISTRIBUTION	
SANTA FE	
FILE	
U.S.G.S.	
LAND OFFICE	
OPERATOR	

5A. Indicate Type of Lease
STATE FEE
5. State Oil & Gas Lease No.

APPLICATION FOR PERMIT TO DRILL, DEEPEN, OR PLUG BACK

1a. Type of Work
b. Type of Well
DRILL DEEPEN PLUG BACK
OIL WELL GAS WELL OTHER
SINGLE ZONE MULTIPLE ZONE

7. Unit Agreement Name
8. Farm or Lease Name
SUMATRA ~~13~~ 13

2. Name of Operator
SIERRA OIL AND GAS COMPANY

9. Well No.
2

3. Address of Operator
ELEPHANT CORRAL COMPLEX, 1444 WAZEE, SUITE 340, DENVER, CO 80202

10. Field and Pool, or Wildcat
WILDCAT *Perman*

4. Location of Well
UNIT LETTER E LOCATED 660 FEET FROM THE WEST LINE
AND 1980 FEET FROM THE NORTH LINE OF SEC. 13 TWP. 17N RGE. 12W NMPM

12. County
MCKINLEY

19. Proposed Depth 3200 19A. Formation ABO 20. Rotary or C.T. ROTARY

21. Elevations (Show whether DF, RT, etc.) GR 6630'
21A. Kind & Status Plug. Bond \$50,000 BLANKET IN FORCE
21B. Drilling Contractor STEWART BROS.
22. Approx. Date Work will start 5-15-81

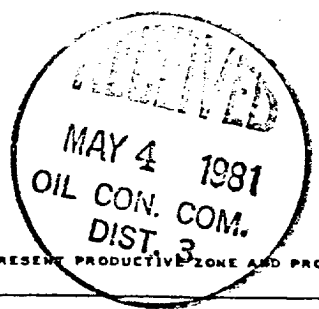
23. PROPOSED CASING AND CEMENT PROGRAM

SIZE OF HOLE	SIZE OF CASING	WEIGHT PER FOOT	SETTING DEPTH	SACKS OF CEMENT	EST. TOP SURFACE
9-7/8"	7-5/8"	24#	100'	200	SURFACE
6-3/4"	4 1/2"	10.5#	3200'	200	2200

- Drill 9-7/8" hole to approximately 100'. Run and cement 7-5/8" surface casing.
- Drill 6-3/4" hole to 3200' TD. Test and log zones of interest. If commercial production warrants, run and cement 4 1/2" production casing. Perforate, treat and test well as necessary.
- If no commercial production is found, plug well according to state rules and regulations.

Appropriate BOP equipment will be used while drilling.

APPROVED FOR 6 m LESS DRILLER'S JOBS, EXPIRES 11-4-81



IN ABOVE SPACE DESCRIBE PROPOSED PROGRAM: IF PROPOSAL IS TO DEEPEN OR PLUG BACK, GIVE DATA ON PRESENT PRODUCTIVE ZONE AND PROPOSED NEW PRODUCTIVE ZONE. GIVE BLOWOUT PREVENTER PROGRAM, IF ANY.

I hereby certify that the information above is true, and complete to the best of my knowledge and belief.

Signed John J. Bergerich Title Petroleum Engineer Date April 30, 1981

(This space for State Use)
APPROVED BY Frank S. Chang TITLE SUPERVISOR DISTRICT # 3 DATE MAY 4 1981

CONDITIONS OF APPROVAL, IF ANY:

NEW MEXICO OIL CONSERVATION COMMISSION
WELL LOCATION AND ACREAGE DEDICATION PLAT

Form C-102
Supersedes C-128
Effective 1-1-65

All distances must be from the outer boundaries of the Section.

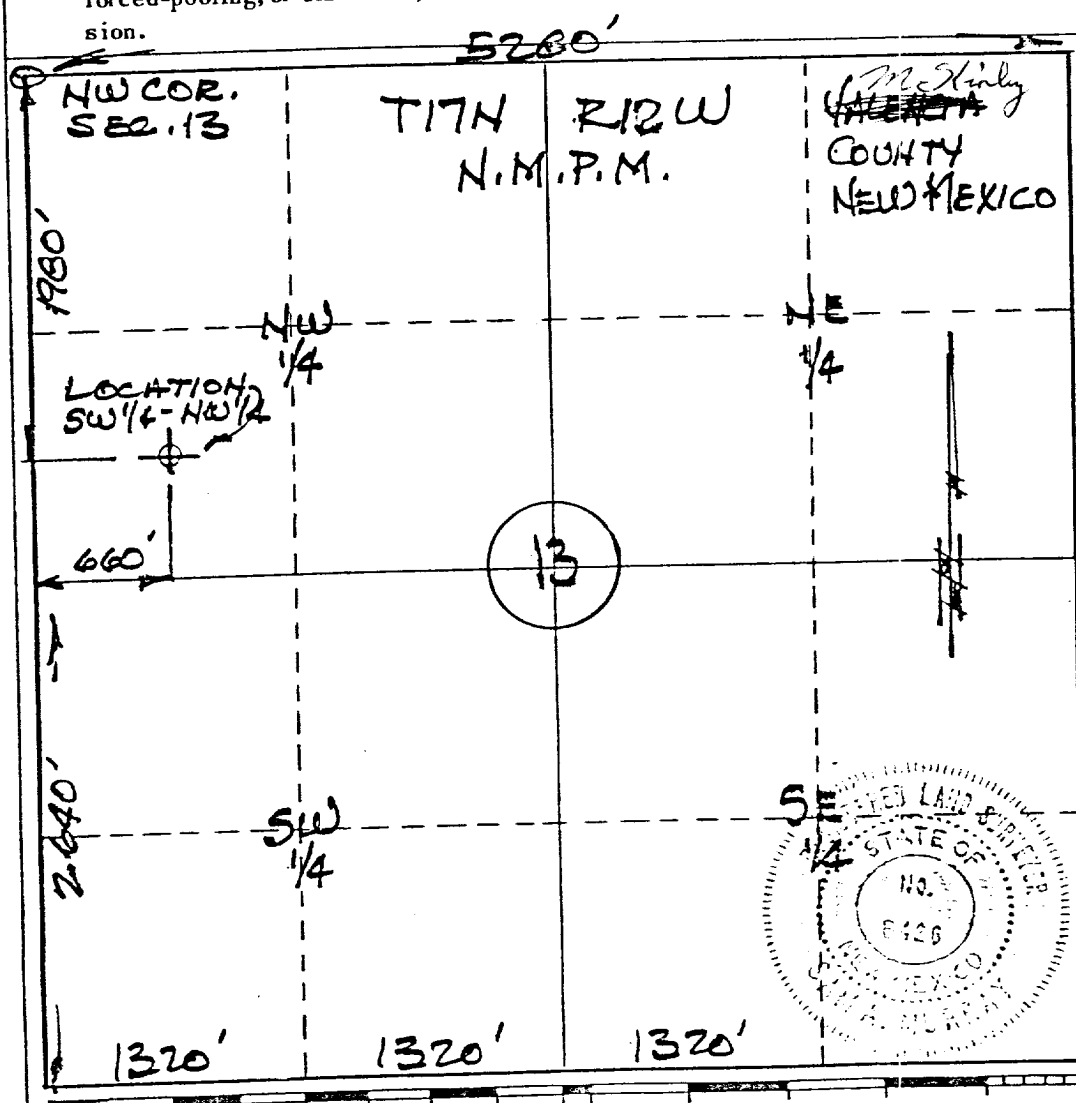
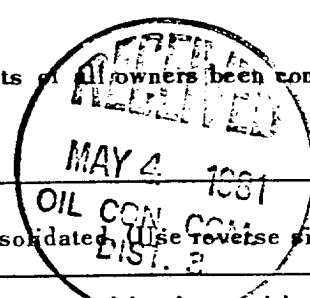
Operator Sierra Oil and Gas Company		Lease Sumatra 13 13		Well No. 2-13
Unit Letter E	Section 13	Township T17N	Range R12W	County McKINLEY
Actual Footage Location of Well: 1900 feet from the NORTH line and 660 feet from the WEST line				
Ground Level Elev: 6630	Producing Formation ABO	Pool	Dedicated Acreage: 40 Acres	

1. Outline the acreage dedicated to the subject well by colored pencil or hachure marks on the plat below.
2. If more than one lease is dedicated to the well, outline each and identify the ownership thereof (both as to working interest and royalty).
3. If more than one lease of different ownership is dedicated to the well, have the interests of all owners been consolidated by communitization, unitization, force-pooling, etc?

Yes No If answer is "yes," type of consolidation _____

If answer is "no," list the owners and tract descriptions which have actually been consolidated (Use reverse side of this form if necessary.) _____

No allowable will be assigned to the well until all interests have been consolidated (by communitization, unitization, forced-pooling, or otherwise) or until a non-standard unit, eliminating such interests, has been approved by the Commission.



CERTIFICATION

I hereby certify that the information contained herein is true and complete to the best of my knowledge and belief.

J. J. Gergurich
Name **J. J. Gergurich**

Position
Petroleum Engineer

Company
Sierra Oil and Gas Co.

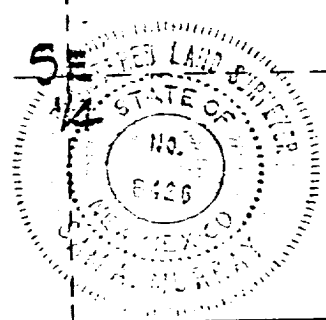
Date
April 30, 1981

I hereby certify that the well location shown on this plat was plotted from field notes of actual surveys made by me or under my supervision, and that the same is true and correct to the best of my knowledge and belief.

APRIL 23RD, 1981

Date Surveyed
Sam G. Murphy
Registered Professional Engineer and/or Land Surveyor

6426 NEW MEXICO
Certificate No.



1. SECTION DESCRIPTION. LOCATION IS IN THE S.W. 1/4, N.W. 1/4, SEC. 13, T17N, R12W